

## Product datasheet for **RC208151**

### AMIGO1 (NM\_020703) Human Tagged ORF Clone

#### Product data:

Product Type:	Expression Plasmids
Product Name:	AMIGO1 (NM_020703) Human Tagged ORF Clone
Tag:	Myc-DDK
Symbol:	AMIGO1
Synonyms:	ALI2; AMIGO; AMIGO-1
Mammalian Cell Selection:	Neomycin
Vector:	pCMV6-Entry (PS100001)
E. coli Selection:	Kanamycin (25 ug/mL)



[View online »](#)

**ORF Nucleotide Sequence:**

>RC208151 ORF sequence  
 Red=Cloning site Blue=ORF Green=Tags(s)

TTTTGTAATACGACTCACTATAGGGCGGCCGGGAATTCGTCGACTGGATCCGGTACCGAGGAGATCTGCC  
 GCC**CGGATCGCC**

ATGCACCCCCACCGTGACCCGAGAGGCCTCTGGCTCCTGTGCCCTCCTGTCCCTGCTGCTTTTTGAGG  
 TGCCAGAGCTGGCCGAGCCGGTGTAGCTGTCTGCCGCTGCTTGTGCGCCAGCAACATCCTCAGCTG  
 CTCCAAGCAGCAGCTGCCAATGTGCCCATTCCTGCCAGTTACACAGCACTACTGGACCTCAGTCAC  
 AACAACTGAGCCGCTGCGGGCCGAGTGGACCCACGCGCCTGACCAACTGCACTCCCTGCTGCTGA  
 GCCACAACCACCTGAACCTCATCTCCTCTGAGGCCTTTCCCGGTACCAACTGCGCTACCTGGACCT  
 CTCCTCAACCAGCTGCGTACACTGGATGAGTTCCTGTTCACTGACCTGCAAGTACTGGAGGTGCTGCTG  
 CTCTACAATAACCACATCATGGCGGTGGACCGGTGCGCCTTCGATGACATGGCCAGCTGCAGAACTCT  
 ACTTGAGCCAGAACCAGATCTCTCGTTCCCTCTGGAAGTGGTCAAGGAAGGAGCCAAGCTACCCAACT  
 AACGCTCCTGGATCTCTTCTAACAAGCTGAAGAACTGCCATTGCCTGACCTGCAGAAGCTGCCGGCC  
 TGGATCAAGAATGGGCTGTACCTACATAACAACCCCTGAACTGCGACTGTGAGCTCTACCAGCTGTTTT  
 CACACTGGCAGTATCGGCAGCTGAGCTCCGTGATGGACTTTCAAGAGGATCTGTACTGCATGAACTCCA  
 GAAGCTGCACAATGTCTTCAACCTGAGTTTCTCAACTGTGGCGAGTACAAGGAGCGTGCCTGGGAGGCC  
 CACCTGGGTGACACCTTGATCATCAAGTGTGACACCAAGCAGCAAGGGATGACCAAGGTGTGGGTGACAC  
 CAAGTAATGAACGGGTGCTAGATGAGGTGACCAATGGCACAGTGAAGTGTCTAAGGATGGCAGTCTTCT  
 TTTCCAGCAGGTGACAGTTCGAGGACGGTGGTGTATACCTGCTATGCCATGGGAGAGACTTTCAATGAG  
 ACACTGTCTGTGAATTGAAAGTGCACAATTTACCTTGCACGGACACCATGACACCTCAACACAGCCT  
 ATACCACCTAGTGGGCTGTATCCTTAGTGTGGTCTGCTCATATACCTATACCTCACCCCTTGCCG  
 CTGCTGGTGGCGGGTGTAGAGAAGCCTTCCAGCCATCAAGGAGACAGCCTCAGCTCTTCCATGCTTAGT  
 ACCACACCAACCATGATCCTATGGCTGGTGGGACAAAGATGATGGTTTTGACCGGCGGGTGGCTTTCC  
 TGGAACTGCTGGACCTGGGAGGGTCAAAGCGGCAAGCTCAAGCCAGGCAACACCCTGCCAGTGCCTGA  
 GGCCACAGGCAAGGGCCAACGGAGGATGTCGGATCCAGAATCAGTCAGCTCGGTCTTCTCTGATACGCC  
 ATTGTGGTG

**ACGGT**ACGGCGCGCTCGAGCAGAACTCATCTCAGAAGAGGATCTGGCAGCAATGATATCCTGGATT  
 ACAAGGATGACGACGATAAGGTTTAA

**Protein Sequence:**

>RC208151 protein sequence  
 Red=Cloning site Green=Tags(s)

MHPHRDPRGLWLLLPSLSLLLFEVARAGRAVVSPPAACLCASNILSCSKQQLPNVPHSLPSYTTALLDL  
 SHNNLSRLRAEWTPTRLTQLHSLLLSHNHLNFISSEAFSPVFNLRYLSSNQLRRLDEFLLFSDLQVLE  
 VLLLNNHIMAVDRCAFDDMAQLQKLYLSQNIQSRFPLELVKEGAKLPKLTLLDLSSNKLKPLPLDLQK  
 LPAWIKNGLYLHNNPLNCDCELYQLFSHWQYRQLSSVMDFQEDLYCMNSKKLHNVFNLSFLNCGEYK  
 ERAWEAHLGDTLIIKCDTKQQGMTKVWVTPSNERNVLDVNTGTVSVSKDGSLLFQQVQVEDGGVYTCY  
 AMGETFNETLSVELKVHNFLLHGHDTLNTAYTTLVGCILSVVLVLIYLYLTPCRCWCRGVEKPS  
 SHQGDSLSSMLS TTPNHDPMAGGDKDDGFDRRVAFLPAGPGQGQSGKLPKPGNTLPVPEATGKQRR  
 MDPESVSSVFSPTP  
 IVV

**TR**TRPLEQKLISEEDLAANDILDYKDDDDKV

**Chromatograms:**

[https://cdn.origene.com/chromatograms/mk6147\\_e12.zip](https://cdn.origene.com/chromatograms/mk6147_e12.zip)

**Restriction Sites:**

Sgfl-Mlul

**Cloning Scheme:**


**ACCN:** NM\_020703

**ORF Size:** 1479 bp

**OTI Disclaimer:** The molecular sequence of this clone aligns with the gene accession number as a point of reference only. However, individual transcript sequences of the same gene can differ through naturally occurring variations (e.g. polymorphisms), each with its own valid existence. This clone is substantially in agreement with the reference, but a complete review of all prevailing variants is recommended prior to use. [More info](#)

**OTI Annotation:** This clone was engineered to express the complete ORF with an expression tag. Expression varies depending on the nature of the gene.

**Components:** The ORF clone is ion-exchange column purified and shipped in a 2D barcoded Matrix tube containing 10ug of transfection-ready, dried plasmid DNA (reconstitute with 100 ul of water).

**Reconstitution Method:**

1. Centrifuge at 5,000xg for 5min.
2. Carefully open the tube and add 100ul of sterile water to dissolve the DNA.
3. Close the tube and incubate for 10 minutes at room temperature.
4. Briefly vortex the tube and then do a quick spin (less than 5000xg) to concentrate the liquid at the bottom.
5. Store the suspended plasmid at -20°C. The DNA is stable for at least one year from date of shipping when stored at -20°C.

**RefSeq:** [NM\\_020703.1](#), [NP\\_065754.1](#)

**RefSeq Size:** 2501 bp

**RefSeq ORF:** 1482 bp

**Locus ID:** 57463

**UniProt ID:** [Q86WK6](#)

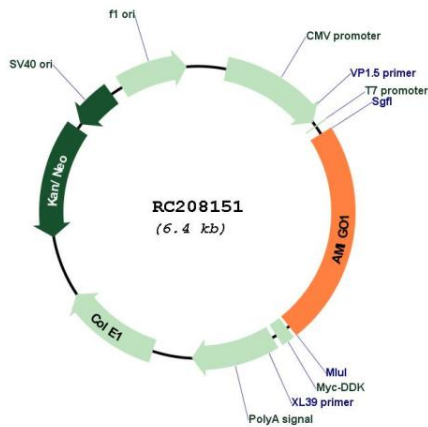
**Cytogenetics:** 1p13.3

**Protein Families:** Transmembrane

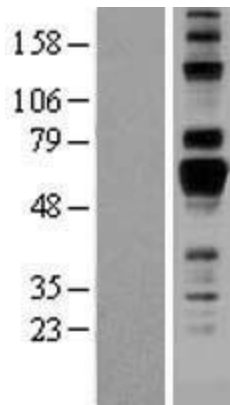
**MW:** 55.2 kDa

**Gene Summary:** Promotes growth and fasciculation of neurites from cultured hippocampal neurons. May be involved in fasciculation as well as myelination of developing neural axons. May have a role in regeneration as well as neural plasticity in the adult nervous system. May mediate homophilic as well as heterophilic cell-cell interaction and contribute to signal transduction through its intracellular domain. Assembled with KCNB1 modulates the gating characteristics of the delayed rectifier voltage-dependent potassium channel KCNB1.[UniProtKB/Swiss-Prot Function]

**Product images:**



Circular map for RC208151



Western blot validation of overexpression lysate (Cat# [LY402810]) using anti-DDK antibody (Cat# [TA50011-100]). Left: Cell lysates from untransfected HEK293T cells; Right: Cell lysates from HEK293T cells transfected with RC208151 using transfection reagent MegaTran 2.0 (Cat# [TT210002]).