

## Product datasheet for RC208143L3

### ENPP7 (NM\_178543) Human Tagged Lenti ORF Clone

#### Product data:

Product Type:	Expression Plasmids
Product Name:	ENPP7 (NM_178543) Human Tagged Lenti ORF Clone
Tag:	Myc-DDK
Symbol:	ENPP7
Synonyms:	ALK-SMase; E-NPP 7; NPP-7; NPP7
Mammalian Cell Selection:	Puromycin
Vector:	pLenti-C-Myc-DDK-P2A-Puro (PS100092)
E. coli Selection:	Chloramphenicol (34 ug/mL)
ORF Nucleotide Sequence:	The ORF insert of this clone is exactly the same as(RC208143).
Restriction Sites:	SgfI-MluI
Cloning Scheme:	

Cloning sites used for ORF Shuttling:



\* The last codon before the Stop codon of the ORF.

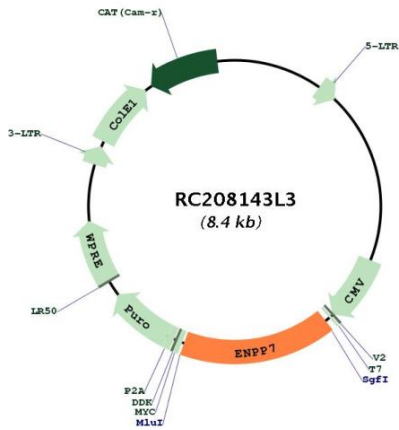
ACCN:	NM_178543
ORF Size:	1374 bp



[View online »](#)

<b>OTI Disclaimer:</b>	The molecular sequence of this clone aligns with the gene accession number as a point of reference only. However, individual transcript sequences of the same gene can differ through naturally occurring variations (e.g. polymorphisms), each with its own valid existence. This clone is substantially in agreement with the reference, but a complete review of all prevailing variants is recommended prior to use. <a href="#">More info</a>
<b>OTI Annotation:</b>	This clone was engineered to express the complete ORF with an expression tag. Expression varies depending on the nature of the gene.
<b>Components:</b>	The ORF clone is ion-exchange column purified and shipped in a 2D barcoded Matrix tube containing 10ug of transfection-ready, dried plasmid DNA (reconstitute with 100 ul of water).
<b>Reconstitution Method:</b>	<ol style="list-style-type: none"><li>1. Centrifuge at 5,000xg for 5min.</li><li>2. Carefully open the tube and add 100ul of sterile water to dissolve the DNA.</li><li>3. Close the tube and incubate for 10 minutes at room temperature.</li><li>4. Briefly vortex the tube and then do a quick spin (less than 5000xg) to concentrate the liquid at the bottom.</li><li>5. Store the suspended plasmid at -20°C. The DNA is stable for at least one year from date of shipping when stored at -20°C.</li></ol>
<b>RefSeq:</b>	<a href="#">NM_178543.3</a> , <a href="#">NP_848638.2</a>
<b>RefSeq Size:</b>	1877 bp
<b>RefSeq ORF:</b>	1377 bp
<b>Locus ID:</b>	339221
<b>UniProt ID:</b>	<a href="#">Q6UWV6</a>
<b>Cytogenetics:</b>	17q25.3
<b>Protein Pathways:</b>	Metabolic pathways, Sphingolipid metabolism
<b>MW:</b>	51.5 kDa
<b>Gene Summary:</b>	The protein encoded by this gene is an intestinal alkaline sphingomyelin phosphodiesterase that converts sphingomyelin to ceramide and phosphocholine. The encoded protein is anchored in the cell membrane, and it may function to protect the intestinal mucosa from inflammation and tumorigenesis. This protein is glycosylated and also exhibits lysophosphatidylcholine hydrolase activity. [provided by RefSeq, Oct 2016]

Product images:



Circular map for RC208143L3