

## Product datasheet for **RC208142**

### **C11orf53 (NM\_198498) Human Tagged ORF Clone**

#### Product data:

Product Type:	Expression Plasmids
Product Name:	C11orf53 (NM_198498) Human Tagged ORF Clone
Tag:	Myc-DDK
Symbol:	C11orf53
Mammalian Cell Selection:	Neomycin
Vector:	pCMV6-Entry (PS100001)
E. coli Selection:	Kanamycin (25 ug/mL)
ORF Nucleotide Sequence:	>RC208142 ORF sequence Red=Cloning site Blue=ORF Green=Tags(s)

TTTTGTAATACGACTCACTATAGGGCGGCCGGAATTCGTCGACTGGATCCGGTACCGAGGAGATCTGCC  
GCC**CGATCGCC**

ATGCCAGGTTGCGCGGTCACGTCAGGTTACTACGGTGTGAGAAGATCTTTCTTATCTGACTCAGACTTCC  
ACAACAGTAAACAGTTTTCAAATGACGTCTACACCTCCAGCGTGGGGAAGCCGTTTCCCTGTGAGTCCTC  
CGCAGGGCAGAGCCATGCGGCTCTCTGGAGCCCTACTTCCCCAGGAGCCCTACGGAGACTACCGGCT  
CCGGCGCTGACGCCAACGCGGGCTCTGTTCAGCGCCTCGCCCTACCGCCGCTCTGCCACCGCCCT  
TCCCCGAGACCCAGCTCACTTCTATTTAGGGACTCATGGGAGCAGACGTTGCCTGACGGTCTCAGCCA  
GCCTGACCCTGTGTCTGCGGATGCCCTGTGACCTTGCCACCCAGCACGAGTTGCCTCTCCAGCTTGAG  
TCCGGGAGCATCGCCAGCACAGGGCTCAAGCTGGGGTTCATCCCTGGCTGGGGCTCAGTCATACTCGC  
TGCATGCTCTGGAAGATCTGCACCACACTCCGGGGTACCCTACCCGCCTCCTTACCCCTTACCCCTTT  
CATGACGGTGTCAAATGACCTACCGCCCAAGGTGGGGCCACTCTCCCAGATGAGGAAGCAGACACCGGT  
TCCCTCCATGACCCTTCCCTTGGGTGAAAGAAGATGGGAGTATTGCCTGGGGTTCATATGAATGCCGCA  
GAGCTTAT

**ACGCGT**ACGCGGCCGCTCGAGCAGAACTCATCTCAGAAGAGGATCTGGCAGCAAATGATATCCTGGATT  
ACAAGGATGACGACGATAAGGTTTAA



[View online »](#)

**Protein Sequence:** >RC208142 protein sequence  
Red=Cloning site Green=Tags(s)

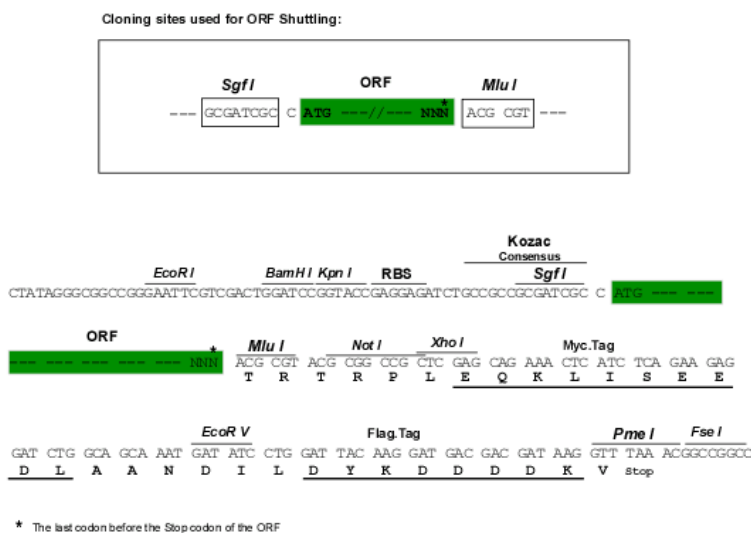
MPGSPVTSGYGVRRSFLSDSDFHNSKQFSNDVYTSSVGKPFPCCESSAGQSHAALLEPYFPQEPYGDYRP  
 PALTPNAGSLFSASPLPPLLPPFPDPAHFLFRDSWEQTLPDGLSQPDPVSADALLTLPSTSCLSQLE  
 SGSLAQHRGSSWGSLLAGAQSYSLHAEDLHHTPGYTPPPYPF TPFMTVSNLPPKVGPLSPDEEADTG  
 SLHDPSPWVKEDGSIWGSYECRRAY

TRTRPLEQKLISEEDLAANDILDYKDDDDKV

**Chromatograms:** [https://cdn.origene.com/chromatograms/mk6342\\_c04.zip](https://cdn.origene.com/chromatograms/mk6342_c04.zip)

**Restriction Sites:** SgfI-MluI

**Cloning Scheme:**



**ACCN:** NM\_198498

**ORF Size:** 708 bp

**OTI Disclaimer:** The molecular sequence of this clone aligns with the gene accession number as a point of reference only. However, individual transcript sequences of the same gene can differ through naturally occurring variations (e.g. polymorphisms), each with its own valid existence. This clone is substantially in agreement with the reference, but a complete review of all prevailing variants is recommended prior to use. [More info](#)

**OTI Annotation:** This clone was engineered to express the complete ORF with an expression tag. Expression varies depending on the nature of the gene.

**Components:** The ORF clone is ion-exchange column purified and shipped in a 2D barcoded Matrix tube containing 10ug of transfection-ready, dried plasmid DNA (reconstitute with 100 ul of water).

**Reconstitution Method:**

1. Centrifuge at 5,000xg for 5min.
2. Carefully open the tube and add 100ul of sterile water to dissolve the DNA.
3. Close the tube and incubate for 10 minutes at room temperature.
4. Briefly vortex the tube and then do a quick spin (less than 5000xg) to concentrate the liquid at the bottom.
5. Store the suspended plasmid at -20°C. The DNA is stable for at least one year from date of shipping when stored at -20°C.

**RefSeq:** [NM\\_198498.2](#)

**RefSeq Size:** 1106 bp

**RefSeq ORF:** 867 bp

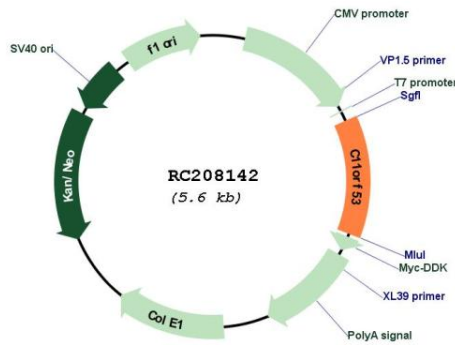
**Locus ID:** 341032

**UniProt ID:** [Q8IXP5](#)

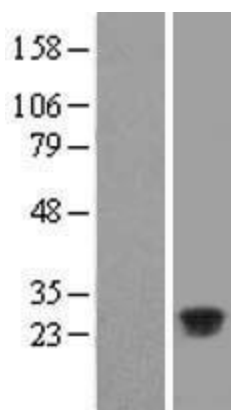
**Cytogenetics:** 11q23.1

**MW:** 25.4 kDa

**Product images:**



Circular map for RC208142



Western blot validation of overexpression lysate (Cat# [LY404888]) using anti-DDK antibody (Cat# [TA50011-100]). Left: Cell lysates from untransfected HEK293T cells; Right: Cell lysates from HEK293T cells transfected with RC208142 using transfection reagent MegaTran 2.0 (Cat# [TT210002]).



Coomassie blue staining of purified C11orf53 protein (Cat# [TP308142]). The protein was produced from HEK293T cells transfected with C11orf53 cDNA clone (Cat# RC208142) using MegaTran 2.0 (Cat# [TT210002]).