

Product datasheet for **RC208141**

GAS2L3 (NM_174942) Human Tagged ORF Clone

Product data:

Product Type:	Expression Plasmids
Product Name:	GAS2L3 (NM_174942) Human Tagged ORF Clone
Tag:	Myc-DDK
Symbol:	GAS2L3
Synonyms:	G2L3
Mammalian Cell Selection:	Neomycin
Vector:	pCMV6-Entry (PS100001)
E. coli Selection:	Kanamycin (25 ug/mL)



[View online »](#)

**ORF Nucleotide
Sequence:**

>RC208141 ORF sequence
 Red=Cloning site Blue=ORF Green=Tags(s)

TTTTGTAATACGACTCACTATAGGGCGGCCGGGAATTCGTCGACTGGATCCGGTACCGAGGAGATCTGCC
 GCC**CGGATCGCC**

ATGCAGCCTGCAATTCAGTATGGTTTGGAGAAGATCTGCCTCTAAGTCCTCGGAGTCTCTGACTCCCA
 GACACGGACCAGGATTGGCTAATGTTTGTCAAGTACGATGAGTGGATAGCTGTGAGGCATGAAGCCACTTT
 GTTGCCCATGCAAGAAGATCTGTCAATCTGGTTATCTGGTTTATTAGGTATTAAGTTAAGGCAGAAAAA
 TTATTGGAAGAACTTGATAATGGAGTACTATTATGTCAACTGATTGATGTTCTTCAAACATGGTGAAAA
 CATGCAACTCTGAAGAATCAGGGAAATTTCCAATGAGAAAAAGTCCCTGTAAAGAAAGATGCTGCATCAGG
 TTCATTCTTTGCTCGGGACAATACCGCAAACCTCCTTCACTGGTGTAGGGACATTGGGGTTGATGAAACT
 TACCTCTTTGAATCTGAAGGTTTAGTTTTGCACAAAGATCCAAGACAGGTGTATCTTTGTCTTCTTGAAA
 TTGGTTCGAATTGTGTCAAGATACGGGGTTGAGCCACCAGTGTAGTAAAACCTTGAGAAAGAAATTGAGTT
 AGAAGAGACTTTGCTTAATACTTCTGGGCCTGAAGATTCCATCAGCATTCCAAAATCATGCTGTCGGCAT
 GAAGAGCTACATGAAGCTGTTAAACATATTGCTGAGGACCTCCTTGTAGTTGTTCTCATCGATTTTCTA
 TTGAGTATTTATCTGAAGGACGGTACCGACTAGGGGATAAAAATACTCTTTATAAGAAATGCTTCATGGAAA
 ACATGTGATGGTTCGCGTTGGTGGAGGCTGGGATACTCTTCAAGGATTTTGTCTAAATATGACCCCTGT
 CGAATATTACAGTTTGCCACACTAGAACAAAAATTTTAGCATTTCAAAAAGGAGTTTCTAATGAAAGTG
 TACCTGATTCGCCTGCCAGAACCTCAGCCTCCTGAAATGAATCCTTTGTGAGCAGTTAACATGTTTCA
 GAAACAAAATTCAAAACCCAGCGTGCCAGTTAGTATTCAAAAAGCAAAGAAAAACAGGGACGTCCACCA
 GGTGCATTGGTGCCAGCATCTTCACTGAAAGGAGGTAATCTGGGCTCTATGTCAGTCCGTTCTAAATTGC
 CAAATTTCCAGCAGCATCTTCTCATCCCAAGCTCAAGTCTTCAAAGGCATAACGAAGAAACCGCAGGC
 TCCTTCAAACAATGCATCATCTTCACTTGCCTTCAATTAATCCAGTAGGTAAAAACACTTCTTCAACAGCT
 TTACCAAGAAGTGCACCTTGATATCTGAGTCACCGAGAAAAATGTATTTTATCCCCCAATACCCCAAGG
 CCAAGGTTATTCCAGCCAGAATTCAGCAGATCTGCCGAGTCCACACTTTTGCCAAATAAGTGTTCCAGG
 AAAAACTCAACCTAAGTATTTGAAACATAATCATATTTCTTCCAGAGATAATGCAGTATCTCACTTAGCT
 GCACATTCAAATTCATCCTCAAATGTCCCAAGCTGCCTAAAGCAAATATACCTGTAAGACCTAACCTT
 CTTTCCAGTCTCTGCAAAAATGACAAAAACAGTTCCAAAACCATAGCCACGGGTCTAGGAACACAGTC
 TCAACCATCCGATGGAGCCCAAGCAAAGCCAGTCCCAGCACAGAACTTAAATCGGCCTTGAATTTA
 AATCAGCCAGTTTCTGTGTCCTCAGTTTCTCCTGTAAAAGCCACACAGAAATCAAAGATAAGAATATAG
 TTTGAGCTACAAAAAGCAGCCTCAGAATAAAAGTGCATTTGAGAAGACAGGACCCAGCTCCTTGAAGTC
 TCCTGGCCGTACCCCACTGTCCATCGTGAGCCTACCCAGTCTTCTACAAAAACAAAACTGCACCCGAAG
 TCAGCACAGACTGTCGTAAGAGCCAGCATTCAACTAAAGGGCCTCCCAGAAAGTGCCAAAACCCAGCTT
 CAATCAGGAAACCCCTCATCTGTTAAGGATGCAGATAGTGGAGATAAAAAACCTACTGCAAGAAAAA
 GGAAGATGATGACCATTATTTGTGATGACTGGAAGTAAGAAACCTAGAAAA

ACGCGTACGCGGCCGCTCGAGCAGAACTCATCTCAGAAGAGGATCTGGCAGCAATGATATCCTGGATT
 ACAAGGATGACGACGATAAGGTTTAA

Protein Sequence: >RC208141 protein sequence
 Red=Cloning site Green=Tags(s)

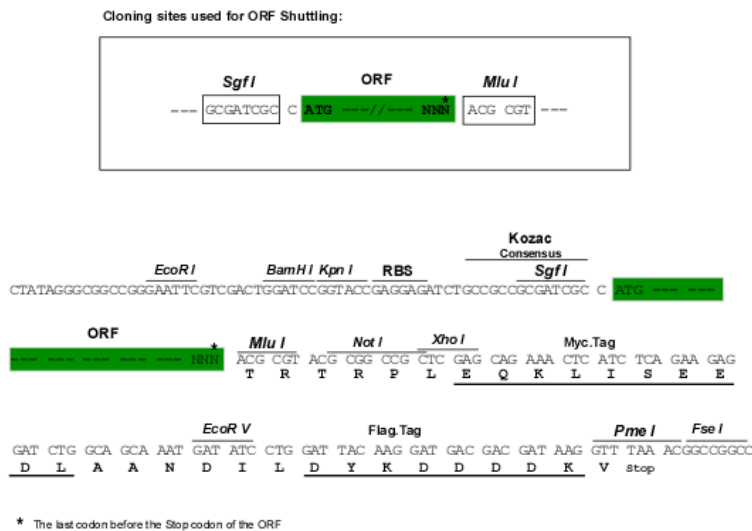
MQP AIQVWFGEDLPLSPRSPLTPRHGPGLANVCQYDEWIAVRHEATLLPMQEDLSIWL SGLLGKVKAEK
 LLEELDNGVLLCQLIDVLQNMVKTCSNEESGNFPMRKVPCKDAASGSFFARDNTANFLHWC RDIGVDET
 YLFESEGLVLHKDPRQVYLCLEIGRIVSRYGVEPPVLVKLEKEIELEETLLNTSGPEDSISIPKSCCRH
 EELHEAVKHIAEDPPCSCSHRFSIEYLSSEGRYRLGDKILFIRMLHGKHVMVRVGGGWDTLQGFLLKYDPC
 RILQFATLEQKILAFQKGVSNESVPSPARTPQPPEMNPLSAVNMFKQNSKPSVPVSIIPKSKQGRPP
 GALVPASSLKGGNLGSMSVRSKLPNSPAASSHPLKSSKGIITKKPQAPSNNASSLASLNPVGKNTSSPA
 LPRTAPCISSEPRKCISSPNTPKAKVIPAQNSADLPESTLLPNKCSGKTQPKYLKHNHISSRDNVASHLA
 AHSNSSKCPKLPKANIPVRPKPSFQSSAKMTKTSSKTIATGLTQSQPSDGAPQAKVPVPAQKLSALNL
 NQPVSVSSVSPVKATQKSKDKNIVSATKKQPQNKSAFQKTPGSSLLKSPGRTPLSIVSLPQSSTKTQTAPK
 SAQTVAKSQHSTKGPPRSKTPASIRKPPSSVKDADSGDKKPTAKKKEDDDHYFVMTGSKKPRK

TRTRPLEQKLI SEEDLAANDILDYKDDDDKV

Chromatograms: https://cdn.origene.com/chromatograms/mk6509_d09.zip

Restriction Sites: SgfI-MluI

Cloning Scheme:



ACCN: NM_174942

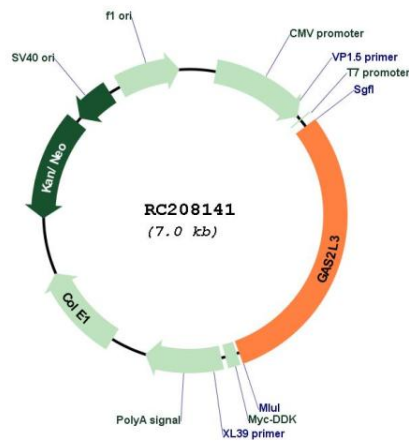
ORF Size: 2082 bp

OTI Disclaimer: The molecular sequence of this clone aligns with the gene accession number as a point of reference only. However, individual transcript sequences of the same gene can differ through naturally occurring variations (e.g. polymorphisms), each with its own valid existence. This clone is substantially in agreement with the reference, but a complete review of all prevailing variants is recommended prior to use. [More info](#)

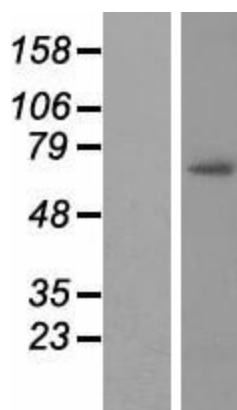
OTI Annotation: This clone was engineered to express the complete ORF with an expression tag. Expression varies depending on the nature of the gene.

- Components:** The ORF clone is ion-exchange column purified and shipped in a 2D barcoded Matrix tube containing 10ug of transfection-ready, dried plasmid DNA (reconstitute with 100 ul of water).
- Reconstitution Method:**
1. Centrifuge at 5,000xg for 5min.
 2. Carefully open the tube and add 100ul of sterile water to dissolve the DNA.
 3. Close the tube and incubate for 10 minutes at room temperature.
 4. Briefly vortex the tube and then do a quick spin (less than 5000xg) to concentrate the liquid at the bottom.
 5. Store the suspended plasmid at -20°C. The DNA is stable for at least one year from date of shipping when stored at -20°C.
- RefSeq:** [NM_174942.1](#), [NP_777602.1](#)
- RefSeq Size:** 2341 bp
- RefSeq ORF:** 2085 bp
- Locus ID:** 283431
- UniProt ID:** [Q86XJ1](#)
- Cytogenetics:** 12q23.1
- MW:** 75.2 kDa
- Gene Summary:** Cytoskeletal linker protein. May promote and stabilize the formation of the actin and microtubule network.[UniProtKB/Swiss-Prot Function]

Product images:



Circular map for RC208141



Western blot validation of overexpression lysate (Cat# [LY406343]) using anti-DDK antibody (Cat# [TA50011-100]). Left: Cell lysates from untransfected HEK293T cells; Right: Cell lysates from HEK293T cells transfected with RC208141 using transfection reagent MegaTran 2.0 (Cat# [TT210002]).