

Product datasheet for **RC208137**

JRK (NM_003724) Human Tagged ORF Clone

Product data:

Product Type:	Expression Plasmids
Product Name:	JRK (NM_003724) Human Tagged ORF Clone
Tag:	Myc-DDK
Symbol:	JRK
Synonyms:	jerky; JH8
Mammalian Cell Selection:	Neomycin
Vector:	pCMV6-Entry (PS100001)
E. coli Selection:	Kanamycin (25 ug/mL)



[View online »](#)

ORF Nucleotide Sequence:

>RC208137 representing NM_003724
 Red=Cloning site Blue=ORF Green=Tags(s)

TTTTGTAATACGACTCACTATAGGGCGGCCGGAATTCGTCGACTGGATCCGGTACCGAGGAGATCTGCC
 GCC**CGGATCGCC**

ATGGCCTCCAAGCCGGCTGCCGGAAGAGCAGAGGGGAGAAGCGGAAGAGGGTGGTGTGACTGAAGG
 AGAAGATTGACATCTGCACGCGCCTGGAGAAGGGCGAGAGCCGGAAGGCACTGATGCAGGAGTACAATGT
 GGGCATGTCCACCCTCTACGACATCAGGGCCACAAGGCGCAGCTGCTCCGGTTCTTCGCCAGCTCGGAC
 TCCAACAAGGCGCTGGAGCAGCGGCGCACGCTGCACACGCCAAGCTGGAGCACCTGGACCGCGTCTGT
 ACGAGTGGTTCTGGGAAGCGCTCCGAGGGCGTCCCCGTGTCAGGCCCATGCTCATCGAGAAGGCCAA
 GGACTTCTACGAGCAGATGCAGCTCACTGAGCCCTGCGTGTCTCCGAGGGTGGCTTTGGCGCTTTAAG
 GCCAGACACGGCATTAAAAAGCTAGATGCATCCAGTAAAAGCAGTCAGCCGACCACCAGGCCGCGGAGC
 AGTTCTGTGCGTTTTTCAGGAGCTTGGCTGCTGAGCACGGGCTGCCGCCGAGCAGGTTTACAACGCTGA
 TGAGACCGGCCTTTCTGGCGGTGCTGCCAAATCCCCTCCGGAAGGCGGGGCTGTGCCTGGCCCAAG
 CAGGGCAAGGACCGGCTGACCGTGTGTGTGCCAACGCCACGGGCTCCCACAGGCTCAAAGCCCTTGG
 CCATCGGGAAGTGCAGCGGTCCCAGGGCTTCAAAGGCATCCAGCACCTGCCCGTCGCTATAAGGCCCA
 GGGGAATGCCTGGGTGGACAAGGAGATTTTTCCGATTGGTTCATCATATCTTTGTGCCCTCGGTGAGA
 GAGCACTTCAGAACCATAGGTTTCCCGGAAGACAGCAAAGCCGTTCTCTTGTGGACAGCTCCCGGGCTC
 ACCCGCAGGAGGCGAGCTGGTGTCCAGTAACGTTTTCCACATCTTCTGCTGCCAGCTGGCCTCATT
 GGTGCAGCCATGGAGCAGGGCATTCCGAGAGATTTTATGAGGAACCTTATTAAACCCTCCGGTCCCCTG
 CAGGGCCCCATGCCCGCTACAACATGAACGATGCCATATTCAGCGTGGCCTGTGCCTGGAACGCACTCC
 CTAGCCAGCTTTCAGGCGGGCCTGGAGGAAGCTGTGGCGTGGTTGCGTTTCCGAAGGCTCCTCCTC
 TGAGGAGGAGTTGGAGGCAGAGTGCTTCCAGTGAAGCCCCACAACAAGTCTTTGCACACATCCTGGAG
 CTTGTGAAGGAAGGCTCCTCCTGCCCGGCCAGCTTCGCCAGCGCCAGGCGCCAGCTGGGGGTAGCGG
 GAAGGGAGGCAGAAGGGGACGGCCCCCTGCTGCCACGTCGCCAGCAGAGGTTGTGTGGAGTTAGAAAA
 GACTCCAAAAGCTGACCAGGACGGCGGAGGAGATCCTGGTGGAGGCGAGGAGGTGGCCTGGGAGCAGGCG
 GCCGTGGCCTTTGACGAGTCTGCGCTTTGCCGAGCGGCAGCCATGCTTCAGTGCAGGAAAGTGGGGC
 AGCTGCGGGCGCTGCGTGCCTGTTCCGGAGCCAGCAGGAGGAGGCGGCGTGGTGCCTCGGGG
 TGTGGTCAAGGTTGAAGCCCTCCAGGAGGGCCCTGGTGGCTGTGGGGCCACAGCTCAGTCCCTTGCC
 TGCTCATCCACAGCAGGTGACAAC

ACGCGTACGCGGGCCGCTCGAGCAGAAACTCATCTCAGAAGAGGATCTGGCAGCAAATGATATCCTGGATT
 ACAAGGATGACGACGATAAGGTTTAA

Protein Sequence:

>RC208137 representing NM_003724
 Red=Cloning site Green=Tags(s)

MASKPAAGKSRGEKRKRVLTLKEKIDICTRLEKESRKALMQEYNVGMSTLYDIRAHKAQLLRFASSD
 SNKALEQRRLHTPKLEHLDRVL YEWFLGKRSEGVVSGPMLIEKAKDFYEQMLTEPCVFSGGWLWRFK
 ARHGIIKLDASSEKQSADHQAAEQCAFFRSLAAEHLSAEQVYNADETGLFWRCLPNPTPEGGAVPGPK
 QGKDRLTVLMCANATGSHRLKPLAIGKCSGPRAFKGIQHLPVAYKAQGNWVDKEIFSDWFHHIFVPSVR
 EHFRTIGLPEDSKAVLLLDSSRAHPQEAELVSSNVFTIFLPASVASLVQPMEQGIIRDFMRNFINPPVPL
 QGPHARYNMNDIAIFSVACAWNAVPSHVFRRAWRKLWPSVAFAEGSSSEEELEAECFPVKPHNKSFAHILE
 LVKEGSSCPGQLRQRQAASWGVAGREAEGRPPAATSPAEEVWSSEKTPKADQDGGGDPGEGEEVAWEQA
 AVAFDAVLRFAERQPCFSAQEVGQLRALRAVFRSQQVRRRRRGGALGAVVKVEALQEGPGGCGATAQSPLP
 CSSTAGDN

TRTRPLEQKLISEEDLAANDILDYKDDDDKV

Chromatograms:

https://cdn.origene.com/chromatograms/ja1869_g07.zip

Restriction Sites:

Sgfl-Mlul

Cloning Scheme:


ACCN: NM_003724

ORF Size: 1704 bp

OTI Disclaimer: Due to the inherent nature of this plasmid, standard methods to replicate additional amounts of DNA in E. coli are highly likely to result in mutations and/or rearrangements. Therefore, OriGene does not guarantee the capability to replicate this plasmid DNA. Additional amounts of DNA can be purchased from OriGene with batch-specific, full-sequence verification at a reduced cost. Please contact our customer care team at custsupport@origene.com or by calling 301.340.3188 option 3 for pricing and delivery.

The molecular sequence of this clone aligns with the gene accession number as a point of reference only. However, individual transcript sequences of the same gene can differ through naturally occurring variations (e.g. polymorphisms), each with its own valid existence. This clone is substantially in agreement with the reference, but a complete review of all prevailing variants is recommended prior to use. [More info](#)

OTI Annotation: This clone was engineered to express the complete ORF with an expression tag. Expression varies depending on the nature of the gene.

Components: The ORF clone is ion-exchange column purified and shipped in a 2D barcoded Matrix tube containing 10ug of transfection-ready, dried plasmid DNA (reconstitute with 100 ul of water).

- Reconstitution Method:**
1. Centrifuge at 5,000xg for 5min.
 2. Carefully open the tube and add 100ul of sterile water to dissolve the DNA.
 3. Close the tube and incubate for 10 minutes at room temperature.
 4. Briefly vortex the tube and then do a quick spin (less than 5000xg) to concentrate the liquid at the bottom.
 5. Store the suspended plasmid at -20°C. The DNA is stable for at least one year from date of shipping when stored at -20°C.

RefSeq: [NM_003724.2](#), [NP_003715.2](#)

RefSeq Size: 9116 bp

RefSeq ORF: 1707 bp

Locus ID: 8629

UniProt ID: [O75564](#)

Cytogenetics: 8q24.3

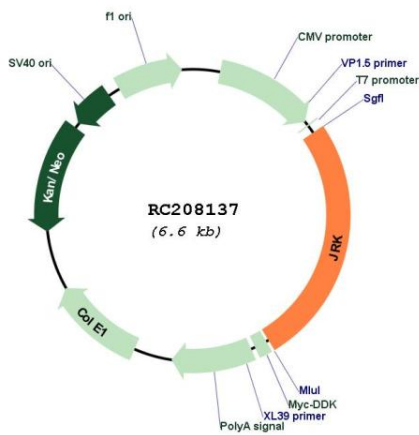
Domains: DDE, CENPB, CENP-B_N

Protein Families: Transcription Factors

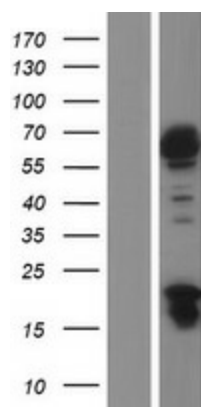
MW: 62.5 kDa

Gene Summary: This gene encodes a conserved protein that is similar to DNA-binding proteins, such as major centromere autoantigen B (CENPB). Inactivation of the related gene in mice resulted in epileptic seizures. Childhood Absence Epilepsy (CAE) has been mapped to the same chromosomal location (8q24.3) as this gene. Alternative splicing results in multiple transcript variants. [provided by RefSeq, Jul 2013]

Product images:



Circular map for RC208137



Western blot validation of overexpression lysate (Cat# [LY418476]) using anti-DDK antibody (Cat# [TA50011-100]). Left: Cell lysates from untransfected HEK293T cells; Right: Cell lysates from HEK293T cells transfected with RC208137 using transfection reagent MegaTran 2.0 (Cat# [TT210002]).