

Product datasheet for **RC208130**

PCYT1A (NM_005017) Human Tagged ORF Clone

Product data:

Product Type:	Expression Plasmids
Product Name:	PCYT1A (NM_005017) Human Tagged ORF Clone
Tag:	Myc-DDK
Symbol:	PCYT1A
Synonyms:	CCTA; CCTalpha; CT; CTA; CTPCT; PCYT1; SMDCRD
Mammalian Cell Selection:	Neomycin
Vector:	pCMV6-Entry (PS100001)
E. coli Selection:	Kanamycin (25 ug/mL)
ORF Nucleotide Sequence:	>RC208130 representing NM_005017 Red=Cloning site Blue=ORF Green=Tags(s)

TTTTGTAATACGACTCACTATAGGGCGGCCGGAATTCGTCGACTGGATCCGGTACCGAGGAGATCTGCC
GCC**CGATCGCC**

ATGGATGCACAGTGTTCAGCCAAGGTCAATGCAAGGAAGAGGAGAAAAGAGGGCGCCCGACCCAACGGGG
CAACAGAAGAAGATGGGGTTCCTTCCAAAGTGCAGCGCTGTGCAGTGGGCTTACGGCAACCAGCTCCTTT
TTCTGATGAAATTGAAGTTGACTTTAGTAAGCCCTATGTCAGGGTAACTATGGAAGAAGCCAGCAGAGGA
ACTCCTTGTGAGCGACCTGTGAGAGTTTATGCCGATGGAATATTTGACTTATTTCACTCTGGTCACGCC
GAGCTCTGATGCAAGCGAAGAACCTTTCCCTAATACGTACCTCATTGTGGGAGTTTGCAGTGATGAGCT
CACACACAACCTCAAAGGCTTACGGTATGAACGAGAATGAGCGCTATGACGCAGTCCAGCACTGCCGC
TACGTGGATGAGGTGGTGAAGATGCGCCCTGGACGCTGACACCCGAGTTCTGGCCGAACACCGGATTG
ATTTTGTAGCCATGATGATATTCCTTATTCATCTGCTGGCAGTGATGATGTTTATAAGCACATCAAGGA
GGCAGGCATGTTTGTCCAACACAGAGGACAGAAGGTATCTCCACATCAGACATCATCACCCGAATTGTG
CGGATTATGATGTGATGCGAGGCGGAACCTGCAGAGGGGCTACACAGCAAAGGAGCTCAATGTCAGCT
TTATCAACGAGAAGAAAATACCACTTGCAGGAGAGGGTTGACAAAGTAAAGAAGAAAGTAAAAGATGTGA
GAAAAGTCAAAGAATTTGTTCAAGAGTGGAGGAAAAAAGCATTGACCTCATTGAAAGTGGGAGGAG
AAGTCCCGAGAATTCATTGGAAGTTTTCTGAAATGTTTGGTCCGGAAGGAGCACTGAAACATATGCTGA
AAGAGGGGAAGGCCGGATGCTGCAGGCCATCAGCCCGAAGCAGAGCCCAAGCAGCAGCCCTACTCGCGA
GCGCTCCCCCTCCCTCTTTCCGATGGCCCTTCTCCGGCAAGACTTCCCACTTGGTCCCCAGCAAAT
CTCTCCAGGCACAAGGCTGCAGCCTATGATATCAGTGAGGATGAAGAAGAC

ACGCGTACGCGGCCGCTCGAGCAGAACTCATCTCAGAAGAGGATCTGGCAGCAAATGATATCCTGGATT
ACAAGGATGACGACGATAAGGTTTAA



[View online »](#)

Protein Sequence: >RC208130 representing NM_005017
 Red=Cloning site Green=Tags(s)

MDAQC^{SA}KNARKRRKEAPGPN^{GATE}EEDGVPSKVQRC^{AV}GLRQ^PAPF^{SDE}IEVDFSKPYV^{RV}TMEEASRG
 TPCER^PVRVYADGIFDLFHS^{GH}ARALMQAK^NLPNTYLIVG^VCSD^ELTHNFKGFTVMNENERYDAVQ^HCR
 YVDE^VVRNAPWTLTPEFLA^{EH}RIDFVAHDDIPYSSAGSDDVYKH^IKEAGMFA^PTQRTEGISTSDIITRIV
 RDYDVYARRNLQRGYTAKELN^SFIN^EKKYHLQERVDK^VKKKVKDVEEK^SKEFVQ^KVEEKSIDLIQ^KWEE
 KSREFIGSFL^EMF^GPEGALKHMLKEGKGRMLQ^AISP^KQSPSSPTRERS^PSPSFRW^PFSGKTSP^PCCSPAN
 LSRHKA^AAYDISEDEED

TRTRPLEQKLISEEDLAANDILDYKDDDDK^V

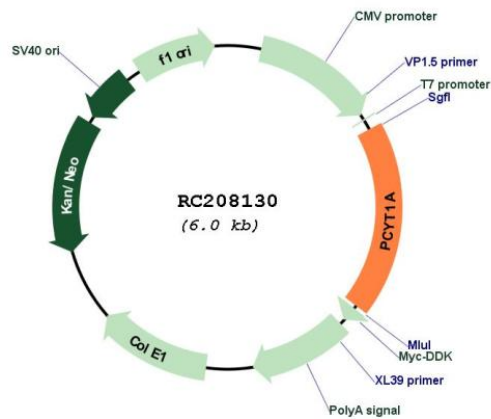
Chromatograms: https://cdn.origene.com/chromatograms/mg2770_g05.zip

Restriction Sites: SgfI-MluI

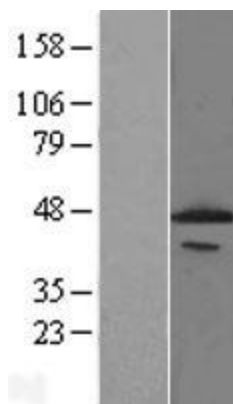
Cloning Scheme:



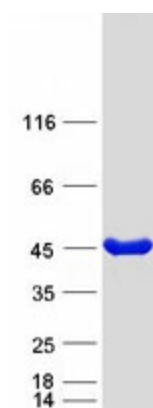
Plasmid Map:



ACCN:	NM_005017
ORF Size:	1101 bp
OTI Disclaimer:	The molecular sequence of this clone aligns with the gene accession number as a point of reference only. However, individual transcript sequences of the same gene can differ through naturally occurring variations (e.g. polymorphisms), each with its own valid existence. This clone is substantially in agreement with the reference, but a complete review of all prevailing variants is recommended prior to use. More info
OTI Annotation:	This clone was engineered to express the complete ORF with an expression tag. Expression varies depending on the nature of the gene.
Components:	The ORF clone is ion-exchange column purified and shipped in a 2D barcoded Matrix tube containing 10ug of transfection-ready, dried plasmid DNA (reconstitute with 100 ul of water).
Reconstitution Method:	<ol style="list-style-type: none">1. Centrifuge at 5,000xg for 5min.2. Carefully open the tube and add 100ul of sterile water to dissolve the DNA.3. Close the tube and incubate for 10 minutes at room temperature.4. Briefly vortex the tube and then do a quick spin (less than 5000xg) to concentrate the liquid at the bottom.5. Store the suspended plasmid at -20°C. The DNA is stable for at least one year from date of shipping when stored at -20°C.
RefSeq:	NM_005017.4
RefSeq Size:	1677 bp
RefSeq ORF:	1104 bp
Locus ID:	5130
UniProt ID:	P49585
Cytogenetics:	3q29
Domains:	CTP_transf_2
Protein Pathways:	Glycerophospholipid metabolism, Metabolic pathways
MW:	41.6 kDa
Gene Summary:	This gene belongs to the cytidyltransferase family and is involved in the regulation of phosphatidylcholine biosynthesis. Mutations in this gene are associated with spondylometaphyseal dysplasia with cone-rod dystrophy. Alternatively spliced transcript variants have been found for this gene. [provided by RefSeq, Aug 2015]

Product images:

Western blot validation of overexpression lysate (Cat# [LY417575]) using anti-DDK antibody (Cat# [TA50011-100]). Left: Cell lysates from untransfected HEK293T cells; Right: Cell lysates from HEK293T cells transfected with RC208130 using transfection reagent MegaTran 2.0 (Cat# [TT210002]).



Coomassie blue staining of purified PCYT1A protein (Cat# [TP308130]). The protein was produced from HEK293T cells transfected with PCYT1A cDNA clone (Cat# RC208130) using MegaTran 2.0 (Cat# [TT210002]).