

Product datasheet for RC208127L3

PKC delta (PRKCD) (NM_212539) Human Tagged Lenti ORF Clone

Product data:

Product Type:	Expression Plasmids
Product Name:	PKC delta (PRKCD) (NM_212539) Human Tagged Lenti ORF Clone
Tag:	Myc-DDK
Symbol:	PKC delta
Synonyms:	ALPS3; CVID9; MAY1; nPKC-delta; PKCD
Mammalian Cell Selection:	Puromycin
Vector:	pLenti-C-Myc-DDK-P2A-Puro (PS100092)
E. coli Selection:	Chloramphenicol (34 ug/mL)
ORF Nucleotide Sequence:	The ORF insert of this clone is exactly the same as(RC208127).
Restriction Sites:	SgfI-MluI
Cloning Scheme:	

Cloning sites used for ORF Shuttling:



* The last codon before the Stop codon of the ORF.

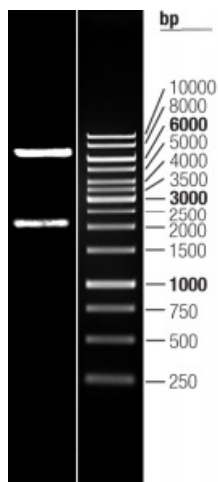
ACCN:	NM_212539
ORF Size:	2028 bp



[View online »](#)

OTI Disclaimer:	The molecular sequence of this clone aligns with the gene accession number as a point of reference only. However, individual transcript sequences of the same gene can differ through naturally occurring variations (e.g. polymorphisms), each with its own valid existence. This clone is substantially in agreement with the reference, but a complete review of all prevailing variants is recommended prior to use. More info
OTI Annotation:	This clone was engineered to express the complete ORF with an expression tag. Expression varies depending on the nature of the gene.
Components:	The ORF clone is ion-exchange column purified and shipped in a 2D barcoded Matrix tube containing 10ug of transfection-ready, dried plasmid DNA (reconstitute with 100 ul of water).
Reconstitution Method:	<ol style="list-style-type: none">1. Centrifuge at 5,000xg for 5min.2. Carefully open the tube and add 100ul of sterile water to dissolve the DNA.3. Close the tube and incubate for 10 minutes at room temperature.4. Briefly vortex the tube and then do a quick spin (less than 5000xg) to concentrate the liquid at the bottom.5. Store the suspended plasmid at -20°C. The DNA is stable for at least one year from date of shipping when stored at -20°C.
RefSeq:	NM_212539.1 , NP_997704.1
RefSeq Size:	2738 bp
RefSeq ORF:	2031 bp
Locus ID:	5580
UniProt ID:	Q05655
Cytogenetics:	3p21.1
Protein Families:	Druggable Genome, Protein Kinase
Protein Pathways:	Chemokine signaling pathway, Fc epsilon RI signaling pathway, Fc gamma R-mediated phagocytosis, GnRH signaling pathway, Neurotrophin signaling pathway, Tight junction, Type II diabetes mellitus, Vascular smooth muscle contraction
MW:	77.5 kDa
Gene Summary:	The protein encoded by this gene is a member of the protein kinase C family of serine- and threonine-specific protein kinases. The encoded protein is activated by diacylglycerol and is both a tumor suppressor and a positive regulator of cell cycle progression. Also, this protein can positively or negatively regulate apoptosis. Defects in this gene are a cause of autoimmune lymphoproliferative syndrome. [provided by RefSeq, Aug 2017]

Product images:



Double digestion of RC208127L3 using SgfI and MluI