

Product datasheet for **RC208127**

PKC delta (PRKCD) (NM_212539) Human Tagged ORF Clone

Product data:

Product Type:	Expression Plasmids
Product Name:	PKC delta (PRKCD) (NM_212539) Human Tagged ORF Clone
Tag:	Myc-DDK
Symbol:	PRKCD
Synonyms:	ALPS3; CVID9; MAY1; nPKC-delta; PKCD
Vector:	pCMV6-Entry (PS100001)
E. coli Selection:	Kanamycin (25 ug/mL)
Cell Selection:	Neomycin



[View online »](#)

ORF Nucleotide
Sequence:

>RC208127 ORF sequence
Red=Cloning site Blue=ORF Green=Tags(s)

TTTTGTAATACGACTCACTATAGGGCGGCCGGAATTCGTCGACTGGATCCGGTACCGAGGAGATCTGCC
GCCGCGATCGCC

ATGGCGCCGTTCTCGCATCGCCTTCACTCCTATGAGCTGGGCTCCCTGCAGGCCGAGGACGAGGCGA
ACCAGCCCTTCTGTGCCGTGAAGATGAAGGAGGCGCTCAGCACAGAGCGTGGGAAAACACTGGTGCAGAA
GAAGCCGACCATGTATCCTGAGTGAAGTCGACGTTTCGACGCCACATCTATGAGGGCGCGTCATCCAG
ATTGTGCTAATGCGGGCAGCAGAGGAGCCAGTGTCTGAGGTGACCGTGGGTGTGTCGGTGTGGCCGAGC
GCTGCAAGAAGAACAATGGCAAGGCTGAGTTCTGGCTGGACCTGCAGCCTCAGGCCAAGGTGTTGATGTC
TGTTCACTATTTCTGGAGGACGTGGATTGCAACAGTCTATGCGCAGTGAGGACGAGGCCAAGTCCCA
ACGATGAACCGCCGCGGAGCCATCAAACAGGCCAAAATCCACTACATCAAGAACCATGAGTTTATCGCCA
CCTTCTTTGGCAACCCACCTTCTGTTCTGTGTGCAAAGACTTTGTCTGGGGCTCAACAAGCAAGGCTA
CAATGCAGGCAATGTAACGCTGCCATCCACAAGAAATGCATCGACAAGATCATCGGCAGATGCACTGGC
ACCGCGGCCAACAGCCGGGACACTATATCCAGAAAGAACGCTTCAACATCGACATGCCGACCCGCTTCA
AGGTTCACAACTACATGAGCCCCACCTTCTGTGACCCTGCGGCAGCCTGCTCTGGGGACTGGTGAAGCA
GGGATTAAGTGTGAAGACTGCGGCATGAATGTGCACCATAAATGCCGGGAGAAGGTGGCCAACCTCTGC
GGCATCAACCAGAAGCTTTTGGCTGAGGCTTGAACCAAGTCAACCAGAGAGCCTCCCGGAGATCAGACT
CAGCCTCTCAGAGCCTGTTGGGATATATCAGGGTTTCGAGAAGAAGACCGGAGTTGCTGGGGAGGACAT
GCAAGACAACAGTGGGACCTACGGCAAGATCTGGGAGGGCAGCAGCAAGTGAACATCAACAACCTCATC
TTCACAAGGTCCTGGGCAAAGGCAGCTTCGGGAAGGTGCTGCTTGGAGAGCTGAAGGGCAGAGGAGAGT
ACTTTGCCATCAAGGCCCTCAAGAAGGATGTGGTCTGATCGACGACGACGTGGAGTGCACCATGGTTGA
GAAGCGGGTGTGACACTTGCCGAGAGAATCCCTTTCTACCCACCTCATCTGCACCTTCCAGACCAAG
GACCACCTGTTCTTTGTGATGGAGTTCTCAACGGGGGGACCTGATGTACCACATCCAGGACAAAGGCC
GCTTTGAACTCTACCGTGCCACGTTTTATGCCGCTGAGATAATGTGTGGACTGCAGTTTCTACACAGCAA
GGGCATCATTTACAGGGACCTCAAACCTGGACAATGTGCTGTTGGACCGGGATGGCCACATCAAGATTGCC
GACTTTGGGATGTGCAAAGAGAACATATCGGGGAGAGCCGGGCCAGCACCTTCTGCGGCACCCCTGACT
ATATCGCCCTGAGATCCTACAGGGCTGAAGTACACATCTCTGTGGACTGGTGGTCTTTGGGGTCTCT
TCTGTACGAGATGCTCATTGGCCAGTCCCCTTCCATGGTATGATGAGGATGAACCTTCGAGTCCATC
CGTGTGGACACGCCACATTATCCCCTGGATCACCAGGAGTCCAAGGACATCCTGGAGAAGCTCTTTG
AAAGGGAACCAACCAAGAGGCTGGGAGTGACGGGAAACATCAAAAATCCACCCCTTCTTCAAGACATAAA
CTGGACTCTGCTGAAAAAGCGGAGGTTGGAGCCACCTTCAGGCCAAAAGTGAAGTCAACCAGAGACTAC
AGTAACTTTGACCAGGAGTTCTGAACGAGAAGGCGCGCTCTCTACAGCGACAAGAACCTCATCGACT
CCATGGACCAGTCTGCATTCGCTGGCTTCTCTTTGTGAACCCAAATTCGAGCACCTCCTGGAAGAT

ACGCGTACGCGGCCGCTCGAGCAGAACTCATCTCAGAAGAGGATCTGGCAGCAAATGATATCCTGGATT
ACAAGGATGACGACGATAAGGTTTAA

Protein Sequence: >RC208127 protein sequence
 Red=Cloning site Green=Tags(s)

MAPFLRIAFNSYELGSLQAEDEANQPFCVAVKMEALSTERGKTLVQKKPTMYPEWKSTFDAHIYEGRVIO
 IIVLMRAAEEPVSEVTVGVSVLAERCKKNNNGKAEFWLDLQPAKVLMSVQYFLEDVDCQSMRSEDEAKFP
 TMNRRGAIKQAKIHYIKNHEFIATFFGQPTFCVCKDFVWGLNKQGYKCRQCNAAIHKKCIDKIIIGRCTG
 TAANSRDTIFQKERFNIDMPHRFKVHNYMSPTFCDHCGSLLWGLVKQGLKCEDCGMNVHHKCREKVANLC
 GINQKLLAEALNQVTQRASRRSDSASSEPVGIYQGFEEKTVGAGEDMQDMSGTYGKIWEGSSKCNINFI
 FHKVLGKGSFGKVLGELKGRGEYFAIKALKKDVVLIIDDVECTMVEKRVLTAAENPFLTHLICTFQTK
 DHLFFVMEFLNGGDLMYHIQDKGRFELYRATFYAAEIMCGLQFLHSGKGIYRDLKLDNVLLDRDGHKIA
 DFGMKENIFGESRASTFCGTPDYIAPEILQGLKYTFVDWWSFGVLLYEMLIQGPSFHGDDEDELFESE
 RVDTPHYPRWITKESKDILEKLFEREPTKRLGVTGNIKIHPFFKINWTLLEKRRLEPPFRPKVKSPRDY
 SNFDQEFLEKARLSYSDKNLIDSMDQSAFAGFSFVNPKEHLLLED

TRTRPLEQKLISEEDLAANDILDYKDDDDKV

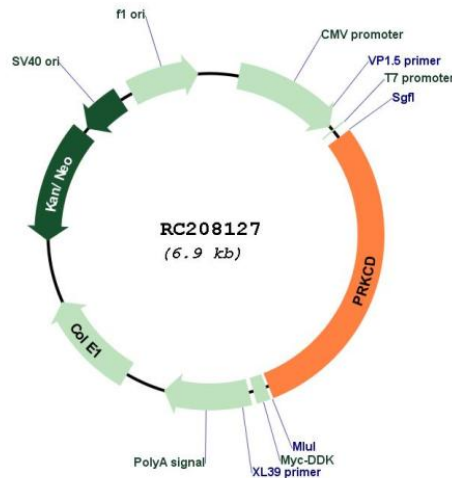
Chromatograms: https://cdn.origene.com/chromatograms/mk6202_b08.zip

Restriction Sites: SgfI-MluI

Cloning Scheme:



Plasmid Map:



ACCN: NM_212539

ORF Size: 2028 bp

OTI Disclaimer: The molecular sequence of this clone aligns with the gene accession number as a point of reference only. However, individual transcript sequences of the same gene can differ through naturally occurring variations (e.g. polymorphisms), each with its own valid existence. This clone is substantially in agreement with the reference, but a complete review of all prevailing variants is recommended prior to use. [More info](#)

OTI Annotation: This clone was engineered to express the complete ORF with an expression tag. Expression varies depending on the nature of the gene.

Components: The ORF clone is ion-exchange column purified and shipped in a 2D barcoded Matrix tube containing 10ug of transfection-ready, dried plasmid DNA (reconstitute with 100 ul of water).

Reconstitution Method:

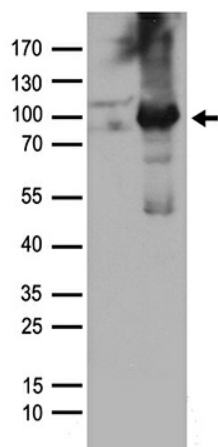
1. Centrifuge at 5,000xg for 5min.
2. Carefully open the tube and add 100ul of sterile water to dissolve the DNA.
3. Close the tube and incubate for 10 minutes at room temperature.
4. Briefly vortex the tube and then do a quick spin (less than 5000xg) to concentrate the liquid at the bottom.
5. Store the suspended plasmid at -20°C. The DNA is stable for at least one year from date of shipping when stored at -20°C.

RefSeq: [NM_212539.1](#), [NP_997704.1](#)

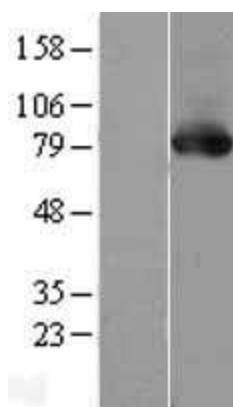
RefSeq Size: 2738 bp

RefSeq ORF:	2031 bp
Locus ID:	5580
UniProt ID:	Q05655
Cytogenetics:	3p21.1
Protein Families:	Druggable Genome, Protein Kinase
Protein Pathways:	Chemokine signaling pathway, Fc epsilon RI signaling pathway, Fc gamma R-mediated phagocytosis, GnRH signaling pathway, Neurotrophin signaling pathway, Tight junction, Type II diabetes mellitus, Vascular smooth muscle contraction
MW:	77.5 kDa
Gene Summary:	The protein encoded by this gene is a member of the protein kinase C family of serine- and threonine-specific protein kinases. The encoded protein is activated by diacylglycerol and is both a tumor suppressor and a positive regulator of cell cycle progression. Also, this protein can positively or negatively regulate apoptosis. Defects in this gene are a cause of autoimmune lymphoproliferative syndrome. [provided by RefSeq, Aug 2017]

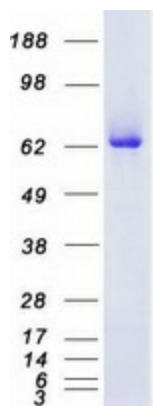
Product images:



HEK293T cells were transfected with the pCMV6-ENTRY control (Cat# [PS100001], Left lane) or pCMV6-ENTRY PRKCD (Cat# RC208127, Right lane) cDNA for 48 hrs and lysed. Equivalent amounts of cell lysates (5 ug per lane) were separated by SDS-PAGE and immunoblotted with anti-PRKCD antibody (Cat# [TA890030]). Positive lysates [LY403724] (100ug) and [LC403724] (20ug) can be purchased separately from OriGene.



Western blot validation of overexpression lysate (Cat# [LY403724]) using anti-DDK antibody (Cat# [TA50011-100]). Left: Cell lysates from untransfected HEK293T cells; Right: Cell lysates from HEK293T cells transfected with RC208127 using transfection reagent MegaTran 2.0 (Cat# [TT210002]).



Coomassie blue staining of purified PRKCD protein (Cat# [TP308127]). The protein was produced from HEK293T cells transfected with PRKCD cDNA clone (Cat# RC208127) using MegaTran 2.0 (Cat# [TT210002]).