

Product datasheet for **RC208122**

GTF3C3 (NM_012086) Human Tagged ORF Clone

Product data:

Product Type:	Expression Plasmids
Product Name:	GTF3C3 (NM_012086) Human Tagged ORF Clone
Tag:	Myc-DDK
Symbol:	GTF3C3
Synonyms:	TFiiiC2-102; TFIIC102; TFIICgamma
Mammalian Cell Selection:	Neomycin
Vector:	pCMV6-Entry (PS100001)
E. coli Selection:	Kanamycin (25 ug/mL)



[View online »](#)

Protein Sequence: >RC208122 protein sequence
 Red=Cloning site Green=Tags(s)

```

MSGFSPELIDYLEGKISFEFERRREERKTRKKSLEQKGLSAEENPDDSEVPSSSGINSTKSQDKDVS
EGETSDGVRKSVHKVFAFMLGENEDDEEEEEEEEEEEEEETPEQPTAGDVFVLEMLNRETKKMMKEKR
PRSKLPRALRGLMGEANIRFARGEREEAILMCMETIRQAPLAYEPFSTLAMIYEDQGDMEKSLQFELIAA
HLNPSDTEEWVRLAEMSLEQDNIKQAIFCYTKALKYEPTNVRYLWERSSLYEQMGDHKMAMDGYRRI LNL
LSPSDGERFMQLARMAKSYEANDVTSAINIIDEAFSKHQGLVSMEDVNIAAELYSISNKQYDKALEIIT
DFSGIVLEKKTSEEGETSEENKAPENVCTCTIPDGVPIIDITVKLMVCLVHLNILEPLNPLLTTLVEQNPEDM
GDLYLDVAEAFLDVGEYNSALPLL SALVCSERYNLAVVWLRHAELKALGYMERAASYGKVVLDLAPLHL
DARISLSTLQQQLGQPEKALEALEPMYDPTLAQDANAAQELKLLLHRSTLLFSQGMKYGYVDTLLTML
AMLLKVMANRAQVCLISSKSGERHLYLIKVSRDKISDSNDQESANCDAKAIFAVLTSVLTKDDWNLLL
KAIYSLCDLSRFQEAELLVDSSLEYYSFYDDRQKRKELEYFGLSAAILDKNFRKAYNYIRIMVMENVNKP
QLWNI FNQVTMHSQDVRHHRFLRLMLKNPENHALCVLNGHNAFVSGSKHALGQYVQAFRTHPDEPLYS
FCIGLTFIHMASQKYVLRHALIVQGFSLNRYLSLRGPCQESFYNLGRGLHQLGLIHLAIHYYQKALEL
PPLVVEGIELDQLDLRRDIAYNLSLIYQSSGNTGMAQTLLTYTCSI
  
```

TRTRPLEQKLISEEDLAANDILDYKDDDDKV

Chromatograms: https://cdn.origene.com/chromatograms/mk6790_b10.zip

Restriction Sites: SgfI-MluI

Cloning Scheme:

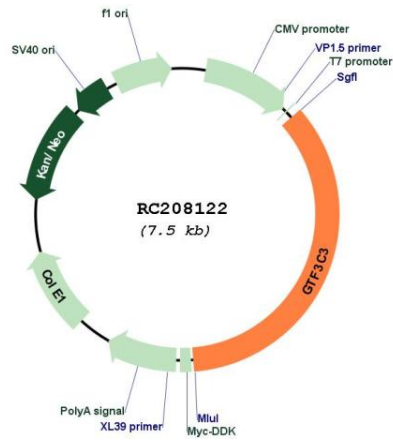
Cloning sites used for ORF Shuttling:



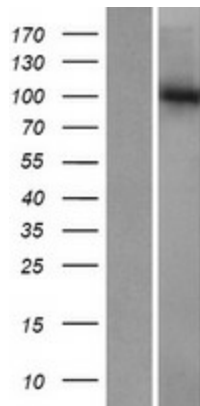
* The last codon before the Stop codon of the ORF

ACCN:	NM_012086
ORF Size:	2658 bp
OTI Disclaimer:	The molecular sequence of this clone aligns with the gene accession number as a point of reference only. However, individual transcript sequences of the same gene can differ through naturally occurring variations (e.g. polymorphisms), each with its own valid existence. This clone is substantially in agreement with the reference, but a complete review of all prevailing variants is recommended prior to use. More info
OTI Annotation:	This clone was engineered to express the complete ORF with an expression tag. Expression varies depending on the nature of the gene.
Components:	The ORF clone is ion-exchange column purified and shipped in a 2D barcoded Matrix tube containing 10ug of transfection-ready, dried plasmid DNA (reconstitute with 100 ul of water).
Reconstitution Method:	<ol style="list-style-type: none">1. Centrifuge at 5,000xg for 5min.2. Carefully open the tube and add 100ul of sterile water to dissolve the DNA.3. Close the tube and incubate for 10 minutes at room temperature.4. Briefly vortex the tube and then do a quick spin (less than 5000xg) to concentrate the liquid at the bottom.5. Store the suspended plasmid at -20°C. The DNA is stable for at least one year from date of shipping when stored at -20°C.
RefSeq:	NM_012086.5
RefSeq Size:	4366 bp
RefSeq ORF:	2661 bp
Locus ID:	9330
UniProt ID:	Q9Y5Q9
Cytogenetics:	2q33.1
Domains:	TPR
Protein Families:	Transcription Factors
MW:	101.2 kDa
Gene Summary:	The protein encoded by this gene is part of the TFIIIC2 complex, which binds to the promoters of small nuclear and cytoplasmic RNA genes in order to recruit RNA polymerase III. The TFIIIC2 complex is composed of six subunits. Two transcript variants encoding different isoforms have been found for this gene. [provided by RefSeq, Oct 2011]

Product images:



Circular map for RC208122



Western blot validation of overexpression lysate (Cat# [LY415989]) using anti-DDK antibody (Cat# [TA50011-100]). Left: Cell lysates from untransfected HEK293T cells; Right: Cell lysates from HEK293T cells transfected with RC208122 using transfection reagent MegaTran 2.0 (Cat# [TT210002]).