

Product datasheet for **RC208113**

NUP107 (NM_020401) Human Tagged ORF Clone

Product data:

Product Type:	Expression Plasmids
Product Name:	NUP107 (NM_020401) Human Tagged ORF Clone
Tag:	Myc-DDK
Symbol:	NUP107
Synonyms:	GAMOS7; NPHS11; NUP84; ODG6
Mammalian Cell Selection:	Neomycin
Vector:	pCMV6-Entry (PS100001)
E. coli Selection:	Kanamycin (25 ug/mL)



[View online »](#)

ORF Nucleotide
Sequence:

>RC208113 representing NM_020401
 Red=Cloning site Blue=ORF Green=Tags(s)

TTTTGTAATACGACTCACTATAGGGCGGCCGGAATTCGTCGACTGGATCCGGTACCGAGGAGATCTGCC
 GCC**CGCATCGCC**

ATGGACAGGAGTGGCTTTGGAGAGATATCATCCCCTGTAATCCGGGAGGCAGAGGTGACACGGACTGCAC
 GGAAACAGAGTGTCTCAGAAAAGAGTTTTACTTCAGGCATCTCAAGATGAAAATTTTGGTAATACTACACC
 AAGAAACCAGGTTATCCCTCGAACTCCTAGCTCATTTTCGACAGCCTTTTACCCCAACAAGCCGAAGCTTA
 CTAAGGCAGCCAGATATTTCTGCATTCTTGGAAACAGGAGGAAGTCGCCCGACTTACGCAGTCTTCAG
 GGTTCTTTGGAAATCTCTCCATGGTTACTAATCTGGATGACAGTAAGTGGGCAGCTGCATTTTCATCACA
 GCGTTCGGGCTGTTACAAACACAGAGCCCCACAGTAAACAGAAGATGAACTATCAGTGCTGTTATG
 TTACGTGAGGATGATCCTGGAGAAGCTGCATCCATGAGTATGTTTTCTGATTTCTCGCAGCTTTTTCTGA
 AGCACTCTTCGAGTACAGTTTTTGATCTTGTGGAAGATGAAAACATCTGTGGTAGTCAGGTGAATAT
 ACTGAGTAAAATAGTGAGTCGAGCAACACCTGGACTTCAAAAATTTTCAAAAACAGCCAGTATGCTCTGG
 CTTCTTCAACAGGAGATGGTCACATGGAGGCTGCTGGCTTCTTTGTATAGAGACAGAATACAGTCTGCAT
 TAGAAGAGGAAAGTGATTTCGCAGTTACTGCTGTTAATGCCAGTAAAAAACAGTTGTGGAGCGTTATT
 TCAGAGGGATTCACTTGTTCGACAAAGTCAGCTGGTGGTAGATTGGTTAGAGAGTATTGCCAAAGATGAA
 ATTGGAGAATTTCTGATAATATTGAGTTTTATGCAAAATCAGTATATTGGGAAAATACTCTGCATACCT
 TAAACAAACGGCAGCTGACTTCTTACGTTGGAAGTGTTCGTCGGCTTGTCACTGAATTGGACCCTGATGC
 TCCCATAAAGACAGAAAATGCCCTTGATGATCTGGATAGAGAAGATGAAGTTAGATTACTCAAATATCTC
 TTTACTTAATCCGTGCTGGAATGACAGAAGAGGCACAACGACTCTGTAACGCTGTGGTCAAGCATGGA
 GAGCTGCAACACTTGAAGGCTGGAACCTGTACCATGACCCTAATGTTAATGGAGGAACAGAAATAGAACC
 TGTTGAAGGGAATCCATATAGACGCATTTGGAAAATAAGTTGCTGGAGAATGGCAGAAGATGAGCTTTTT
 AATAGATACGAGAGAGCAATTTATGCAGCTTTAAGTGGGAATCTTAAGCAGCTGCTTCTGTCTGTGACA
 CCTGGGAAGACACAGTTTGGCCTACTTCGGGTGATGGTGGACAGTCTGGTAGAACAGGAGATCCAGAC
 ATCAGTAGCAACTCTGGATGAACTGAAGAATCCCTAGAGAATATCTGGGAGCAAAGTGGACGTTAGAA
 AAGTTTTTGGGAACCTCAAGCTACTGACAAAAAGAGAGTTCTGGAAGAGAATCAAGAACATTATCATA
 TAGTTCAAAGTTTTCTTATCCTGGGAGACATTGATGGTTGATGGATGAGTTAGCAAATGGCTTTCCAA
 AAGCAGAAAACATCTACCTGGACACCTGCTTCGCTTTATGACTCACCTATTTTTGTTTTTCCGACTCTG
 GGACTACAGACCAAGGAGGAAGTTCTATTGAAGTTTTAAAGACATACATACAGCTTTTAAATAAGAGAGA
 AACATACAAATCTTATAGCATTATATACCTGTCATTTGCCTCAAGACCTAGCTGTTGCCAGTATGCATT
 ATTTTTGGAAAGTGTACAGAATTTGAACAGCGCCACCATTGCCTGGAGTTGGCTAAAGAAGCAGATTTG
 GATGTTGCAACAATAACAAAACCTGTAGTTGAGAATATTCGAAAGAAAGATAATGGTGAATTTAGTCATC
 ATGACCTGGCCCCAGCCCTAGATACTGGCACTACTGAGGAGGATCGTTTTAAAAATGATGTAATTGACTG
 GTTGGTATTTGACCCAGCGCAGAGGGCAGAAGCACTGAAACAAGGCAATGCAATTATGAGAAAATCTTG
 GCATCAAAAAGCAGCAAGCTGCAAAAAGAAGTATTTGTGAAAATTCCTCAGGATTCTATAGCAGAAATCT
 ATAATCAGTGCGAGGAACAAGGAATGGAAAGTCCACTTCTGCTGAAGATGATAATGCTATCCGAGAACA
 TTTGTCATCAGAGCTTATTTGGAAGCCCATGAAACCTTTAATGAGTGGTTAAGCATATGAATTCAGTT
 CCACAAAACCTGCTTTGATACCTCAACCAACTTTTACTGAGAAAAGTGGCTCATGAACACAAAAGAAAAGA
 AATATGAAATGGATTTTGGTATTTGAAAGGGCATTGGATGCCCTAACTGCTGATGTGAAGGAGAAAAT
 GTATAACGCTTTGTTGTTGTTGATGGAGGGTGGATGGTGGATGTTAGAGAGGATGCCAAAGAAGACCAT
 GAAAGAACACATCAAATGGTCTTACTGAGAAAAGCTTTGCTGCCAATGTTGTGTTTTCTGCTTCATACGA
 TATTGCACAGTACTGGTCAGTATCAGGAATGCCTACAGTTAGCAGATATGGTATCCTCTGAGCGCCACAA
 ACTGTACCTGGTATTTTCTAAGGAAGAGCTAAGGAAGTTGCTGCAGAAGCTCAGAGATCCTCTCTAATG
 CTCCTAGACCAGGACTTGACCCATTAGGGTATGAAATTCAGTTA

ACGCGTACGCGGCCGCTCGAGCAGAAAACCTCATCTCAGAAGAGGATCTGGCAGCAAATGATATCCTGGATT
 ACAAGGATGACGACGATAAAGTTTAA

Protein Sequence: >RC208113 representing NM_020401
 Red=Cloning site Green=Tags(s)

MDRSGFGEISSPVIREAEVTRTARKQSAQKRVLLQASQDENFGNTTPRNQVIPRTPSSFRQPFTPTSRSL
 LRQPDISCILGTGGKSPRLTQSSGFFGNLSMVTNLDDSNWAAAFSSQRSGLFTNTEPHSITEDVTISAVM
 LREDDPGEAASMSMFSDFLQSFLLKSSSTVFDLVEEYENICGSQVNILSKIVSRATPGLQKFSKTASMLW
 LLQQEMVTWRLLASLYRDRIQSALEEEVSFAVTAVNASEKTVVEALFQRDSLVRQSQLVVDWLESIAKDE
 IGEFSDNIEFYAKSVYWENTLHTLKQRQLTSYVGSVRPLVTELDPAPIRQKMPLDDLDREDEVRLKYL
 FTLIRAGMTEEAQRLCKRCGQAWRAATLEGWKL YHDPNVNGGTELEPVEGNPYRRIWKISCRMAEDEL
 NRYERIAIYAALSGNLKQLLPVCDTWEDTVWAYFRVMVDSLVEQEIQTSVATLDETEELPREYLGANWTE
 KVFEELQATDKKRVLEENQEHYIVQKFLILGDIDGLMDEF SKWLSKSRNNLPGHLLRFMTHLILFFRTL
 GLQTKEEVSVIEVLKTYIQLLIREKHTNLIAFYTCHLPQDLAVAQYALFLESVTEFEQRHHCLELAKEADL
 DVATITKTVVENIRKKDNGEFSHHDLPALDTGTTEEDRLKIDVIDWL VFDPAQRAEALKQGNAIMRKFL
 ASKKHEAAKEVFKIPQDSIAE IYNQCEEQGMESPLPAEDDNAIREHLCIRAYLEAHETFNEWFKHMNSV
 POKPALIPQPTFTEKVAHEHKEKKYEMDFGIWKGHLDAL TADVKEKMYNVLLFVDGGWMDVVDREDAKEDH
 ERTHQMVLLRKLCLPMLCFLHHTILHSTGQYQECLQLADMVSSERHKLYLVFSKEELRKLQLKRESSLM
 LLDQGLDPLGYEIQL

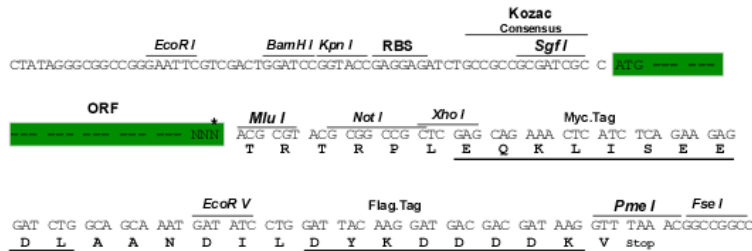
TRTRPLEQKLISEEDLAANDILDYKDDDDKV

Chromatograms: https://cdn.origene.com/chromatograms/mk8119_g05.zip

Restriction Sites: SgfI-MluI

Cloning Scheme:

Cloning sites used for ORF Shuttling:



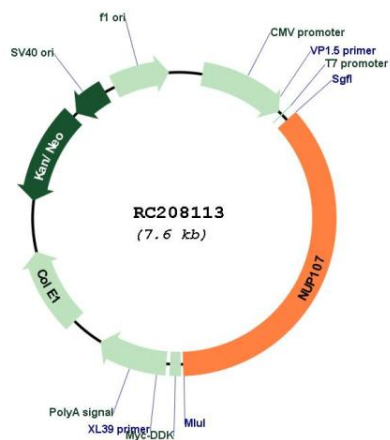
* The last codon before the Stop codon of the ORF

ACCN: NM_020401

ORF Size: 2775 bp

OTI Disclaimer:	The molecular sequence of this clone aligns with the gene accession number as a point of reference only. However, individual transcript sequences of the same gene can differ through naturally occurring variations (e.g. polymorphisms), each with its own valid existence. This clone is substantially in agreement with the reference, but a complete review of all prevailing variants is recommended prior to use. More info
OTI Annotation:	This clone was engineered to express the complete ORF with an expression tag. Expression varies depending on the nature of the gene.
Components:	The ORF clone is ion-exchange column purified and shipped in a 2D barcoded Matrix tube containing 10ug of transfection-ready, dried plasmid DNA (reconstitute with 100 ul of water).
Reconstitution Method:	<ol style="list-style-type: none">1. Centrifuge at 5,000xg for 5min.2. Carefully open the tube and add 100ul of sterile water to dissolve the DNA.3. Close the tube and incubate for 10 minutes at room temperature.4. Briefly vortex the tube and then do a quick spin (less than 5000xg) to concentrate the liquid at the bottom.5. Store the suspended plasmid at -20°C. The DNA is stable for at least one year from date of shipping when stored at -20°C.
RefSeq:	NM_020401.4
RefSeq Size:	3158 bp
RefSeq ORF:	2778 bp
Locus ID:	57122
UniProt ID:	P57740
Cytogenetics:	12q15
Domains:	Nup84_Nup100
MW:	106.8 kDa
Gene Summary:	This gene encodes a member of the nucleoporin family. The protein is localized to the nuclear rim and is an essential component of the nuclear pore complex (NPC). All molecules entering or leaving the nucleus either diffuse through or are actively transported by the NPC. Alternate transcriptional splice variants of this gene have been observed but have not been thoroughly characterized. [provided by RefSeq, Jul 2008]

Product images:



Circular map for RC208113