

## Product datasheet for RC208111

### IL18BP (NM\_173042) Human Tagged ORF Clone

#### Product data:

**Product Type:** Expression Plasmids  
**Product Name:** IL18BP (NM\_173042) Human Tagged ORF Clone  
**Tag:** Myc-DDK  
**Symbol:** IL18BP  
**Synonyms:** FVH; IL18BPa  
**Mammalian Cell Selection:** Neomycin  
**Vector:** pCMV6-Entry (PS100001)  
**E. coli Selection:** Kanamycin (25 ug/mL)  
**ORF Nucleotide Sequence:** >RC208111 ORF sequence  
 Red=Cloning site Blue=ORF Green=Tags(s)

TTTTGTAATACGACTCACTATAGGGCGCCGGGAATTCGTCGACTGGATCCGGTACCGAGGAGATCTGCC  
 GCC**CGATCGCC**

ATGACCATGAGACACAACCTGGACACCAGACCTCAGCCCTTTGTGGGTCTGCTCCTGTGTGCCACGTGCG  
 TCACTCTCCTGGTCAGAGCCACACCTGTCTCGCAGACCACCACAGCTGCCACTGCCTCAGTTAGAAGCAC  
 AAAGGACCCCTGCCCTCCAGCCCCAGTGTTCCAGCAGCTAAGCAGTGTCCAGCATTGGAAGTGACC  
 TGGCCAGAGGTGGAAGTGCCACTGAATGGAACGCTGAGCTTATCCTGTGTGGCCTGCAGCCGCTTCCCCA  
 ACTTCAGCATCCTCTACTGGCTGGGCAATGGTTCCTTCATTGAGCACCTCCAGGCCGACTGTGGGAGGG  
 GAGCACCAGCCGGAACGTGGGAGCACAGGTACGCAGCTGTGCAAGGCCTTGGTGTGGAGCAGCTGACC  
 CCTGCCCTGCACAGCACTTCTCCTGTGTGCTCGTGGACCCTGAACAGGTTGTCCAGCGTCACGTGCG  
 TCCTGGCCAGCTCTGGGCTGGGCTGAGGGCAACCTTGCCCCCACCAAGAAGCCCTGCCTCCAGCCA  
 CAGCAGTCCACAGCAGCAGGGT

**ACGCGT**ACGCGGCCGCTCGAGCAGAACTCATCTCAGAAGAGGATCTGGCAGCAAATGATATCCTGGATT  
 ACAAGGATGACGACGATAAGGTTTAA

**Protein Sequence:** >RC208111 protein sequence  
 Red=Cloning site Green=Tags(s)

MTMRHNWTPDLSPLWVLLLCAHVVTLLVRATPVSQTTAATASVRSTKDPSPQPPVFAAKQCPALEVT  
 WPEVEVPLNGTSLSCVACSRFPNFSILYWLNGSFIHLPGRLEWEGSTSRERGSTGTQLCKALVLEQLT  
 PALHSTNFSCVLVDPEQVVQRHVVLAQLWAGLRATLPPTQEALPSSHSSPQQQG

**TRTRPLEQKLI**SEEDLAANDILDYKDDDDKV



**Chromatograms:** [https://cdn.origene.com/chromatograms/mk6089\\_c10.zip](https://cdn.origene.com/chromatograms/mk6089_c10.zip)

**Restriction Sites:** SgfI-MluI

**Cloning Scheme:**



**ACCN:** NM\_173042

**ORF Size:** 582 bp

**OTI Disclaimer:** The molecular sequence of this clone aligns with the gene accession number as a point of reference only. However, individual transcript sequences of the same gene can differ through naturally occurring variations (e.g. polymorphisms), each with its own valid existence. This clone is substantially in agreement with the reference, but a complete review of all prevailing variants is recommended prior to use. [More info](#)

**OTI Annotation:** This clone was engineered to express the complete ORF with an expression tag. Expression varies depending on the nature of the gene.

**Components:** The ORF clone is ion-exchange column purified and shipped in a 2D barcoded Matrix tube containing 10ug of transfection-ready, dried plasmid DNA (reconstitute with 100 ul of water).

**Reconstitution Method:**

1. Centrifuge at 5,000xg for 5min.
2. Carefully open the tube and add 100ul of sterile water to dissolve the DNA.
3. Close the tube and incubate for 10 minutes at room temperature.
4. Briefly vortex the tube and then do a quick spin (less than 5000xg) to concentrate the liquid at the bottom.
5. Store the suspended plasmid at -20°C. The DNA is stable for at least one year from date of shipping when stored at -20°C.

**Note:** Plasmids are not sterile. For experiments where strict sterility is required, filtration with 0.22um filter is required.

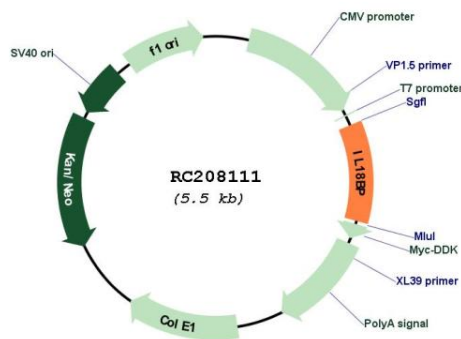
**RefSeq:** [NM\\_173042.2](#), [NP\\_766630.2](#)

**RefSeq Size:** 2189 bp

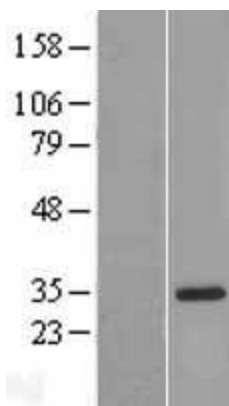
**RefSeq ORF:** 585 bp  
**Locus ID:** 10068  
**UniProt ID:** [O95998](#)  
**Cytogenetics:** 11q13.4  
**Protein Families:** Druggable Genome, Secreted Protein  
**MW:** 21.1 kDa

**Gene Summary:** The protein encoded by this gene functions as an inhibitor of the proinflammatory cytokine, IL18. It binds IL18, prevents the binding of IL18 to its receptor, and thus inhibits IL18-induced IFN-gamma production, resulting in reduced T-helper type 1 immune responses. This protein is constitutively expressed and secreted in mononuclear cells. Elevated level of this protein is detected in the intestinal tissues of patients with Crohn's disease. Alternatively spliced transcript variants encoding different isoforms have been described for this gene. [provided by RefSeq, Feb 2011]

### Product images:



Circular map for RC208111



Western blot validation of overexpression lysate (Cat# [LY428669]) using anti-DDK antibody (Cat# [TA50011-100]). Left: Cell lysates from untransfected HEK293T cells; Right: Cell lysates from HEK293T cells transfected with [RC227296] using transfection reagent MegaTran 2.0 (Cat# [TT210002]).