

Product datasheet for **RC208109**

SEN2 (NM_021627) Human Tagged ORF Clone

Product data:

Product Type:	Expression Plasmids
Product Name:	SEN2 (NM_021627) Human Tagged ORF Clone
Tag:	Myc-DDK
Symbol:	SEN2
Synonyms:	AXAM2; SMT3IP2
Mammalian Cell Selection:	Neomycin
Vector:	pCMV6-Entry (PS100001)
E. coli Selection:	Kanamycin (25 ug/mL)



[View online »](#)

ORF Nucleotide Sequence:

>RC208109 representing NM_021627
 Red=Cloning site Blue=ORF Green=Tags(s)

TTTTGTAATACGACTCACTATAGGGCGGCCGGAATTCGTCGACTGGATCCGGTACCGAGGAGATCTGCC
 GCC**CGCATCGCC**

ATGTACAGATGGCTGGTTAGGATTCTCGCACCATTTCCGTTTCTGCGACCGGTGGTCCCCCTGCC
 GGGCCCTCCTGAAGAGGGCGCTCAGACAGCACTCTGTTTTCTACAGTGGACACTGATGAAATACCAGC
 CAAAAGACCAAGATTAGATTGCTTTATTACCAAGTAAAAACAGTCTCTACAATGCTGCCAGCTTATTT
 GGATTCCATTCCAGCTGACCACAAAGCCCATGGTAACTTCTGCTTGAATGGAACACGGAATGTGGCC
 CTTCAGGAGAGGTATTTTCGAACTCTTCATCTTGTGAAGTACAGGTTCTGGATCCTGGAACAACATGCT
 GAAACTGGGTAATAAATCTCCTAATGGAATAAGTACTATCCAAAGATCAGAGTACAGTACCCGAGAT
 CAGCCACGAGAGTCTGCCTTCTTTGGTTTTACTTTGAACTCAGAAGGCTGTAATAGAAGACCAGGTG
 GCCGTCGCCATAGCAAAGGTAATCCAGAGAGTTCTTTAATGTGGAACCTCAGGAACAGGCTGTAACAGA
 GATGATTTCTGAAGAGAGTGGCAAGGCTGAGGCGTCCCATTTGACTGTGGAGGAGGGTGTCAAAAA
 GAGGAAAGAGAGAAGTACCGAAAGTTATTGGAACGACTTAAAGAAAGTGGTCATGGAAACTCTGTCTGC
 CTGTAACCTCAAATTATCACAGTTCTCAAAGAAGTCAGATGGACACATTAAGACCAAAGGCTGGGGGA
 AGAGCAAATCACGGAGTCAAAACAACCTCAGTTTGTCCAAAACAATATAGACTTGTGAAACAAGGGGA
 CCTCTATGTTTATTGAGAAGTAAAAGAGGTGTTCAAAGGGGAAAATTACTGATACAGAGACGATGGTGC
 GAATCAGATTTGAAAATGAAAGTAGGAGGGGATACCAACTGGAGCCTGACCTATCAGAAGAAGTGTCCGC
 CCGACTCCGCCTGGCAGTGAAGCAATGGCTTACTCAGGAGGAAAGTGTCAATAATTGAGACAAAGGAA
 AAGAATTGCTCAGGCAAAGAGAGGGACAGAAGAACGGACGATCTCCTTGAACCTACAGAGGACATGGAAA
 AGGAAATCAGTAATGCCCTAGGCCATGGCCACAGGATGAAATCCTAAGTAGTGTCTTTCAAATTTGCGAAT
 TACTCGAGGAGATATTCAGACATTAAGAAGTACTCACTGGCTCAATGATGAAGTCATTAATTTTTACATG
 AATCTTCTGGTGGAAAGAAATAAAAAGCAAGGCTATCCAGCACTTCATGTATTCAGTACTTTCTTCTATC
 CTAATAAAGTCTGGGGTTACCAAGCAGTGAACGATGGACAAAGGGGTAATCTCTTTGAACAAGA
 AATTATTCTGGTGCCTATTCATCGGAAGGTACATTGGAGCCTGGTGGTATTGACCTAAGAAAAAAGTGT
 CTTAAATATCTGGATTCTATGGACAAAAGGGCCACAGGATCTGTGAGATTCTCCTTCAGTATTTACAGG
 ATGAAAGTAAAGACCAAAGAAAATAGTGATCTGAATCTTTTAGAGTGGACCCATCACAGCATGAAACCACA
 CGAGATTCCTCAACAGCTGAATGGGAGTATTGTGGAATGTTACTTGTAAATATGCAGATTATATTTCT
 AGGGACAAACCTATCACATTTACTCAGCACCAGATGCCTCTCTCCGGAAGAAGTGGTGTGGGAAATCC
 TTCATCAGCAGTTGCTG

ACGCGTACGCGGCCGCTCGAGCAGAAACTCATCTCAGAAGAGGATCTGGCAGCAAATGATATCCTGGATT
 ACAAGGATGACGACGATAAGGTTTAA

Protein Sequence:

>RC208109 representing NM_021627
 Red=Cloning site Green=Tags(s)

MYRWLVRIILGTIFRFCDRSVPPARALLKRRRSDSTLFSTVDTDEIPAKRPRLDCEIHQVKNSLYNAASLF
 GFPPQLTTKPMVTSACNGTRNVAPSGEVFVSNSSCELTGSGSWNNMLKLGKNSPNGISDYPKIRVTVTRD
 QPRRVLPSPGFLLNSEGCNRRPGRHRSKGNPESSLMWKPQEQAVTEMISEESGKGLRRPHCTVEEVQK
 EEREKYRKLLERLKESGHGNSVCPVTSNYHSSQRSQMDTLKTKGWGEEQNHGVKTTQFVPKQYRLVETRG
 PLCSLRSEKRCCKGKITDTETMVGIRFENESRRGYQLEPDLSEEV SARLRLGSGSNGLLRKVSIIETKE
 KNCSEKRRDRRDDLLELLEDMEKEISNALGHGPQDEILSSAFKLRITRDIQTLKNYHWLNDEVINFYM
 NLLVERNKKQGPALHVFSTFFYPKLSGGYQAVKRWTGVNLFQEIILVPIHRKVHWSLVVIDLRKCC
 LKYLDSMGQKGRICEILLQYLQDESKTRNSDLNLEWTHHSMKPHEIPQQLNGSDCGMFTCKYADYIS
 RDKPITFTQHQMPLFRKKMWEILHQQLL

TRTRPLEQKLISEEDLAANDILDYKDDDDKV

Chromatograms:

https://cdn.origene.com/chromatograms/mk8120_d11.zip

Restriction Sites: SgfI-MluI

Cloning Scheme:



ACCN: NM_021627

ORF Size: 1767 bp

OTI Disclaimer: The molecular sequence of this clone aligns with the gene accession number as a point of reference only. However, individual transcript sequences of the same gene can differ through naturally occurring variations (e.g. polymorphisms), each with its own valid existence. This clone is substantially in agreement with the reference, but a complete review of all prevailing variants is recommended prior to use. [More info](#)

OTI Annotation: This clone was engineered to express the complete ORF with an expression tag. Expression varies depending on the nature of the gene.

Components: The ORF clone is ion-exchange column purified and shipped in a 2D barcoded Matrix tube containing 10ug of transfection-ready, dried plasmid DNA (reconstitute with 100 ul of water).

- Reconstitution Method:
1. Centrifuge at 5,000xg for 5min.
 2. Carefully open the tube and add 100ul of sterile water to dissolve the DNA.
 3. Close the tube and incubate for 10 minutes at room temperature.
 4. Briefly vortex the tube and then do a quick spin (less than 5000xg) to concentrate the liquid at the bottom.
 5. Store the suspended plasmid at -20°C. The DNA is stable for at least one year from date of shipping when stored at -20°C.

RefSeq: [NM_021627.3](#)

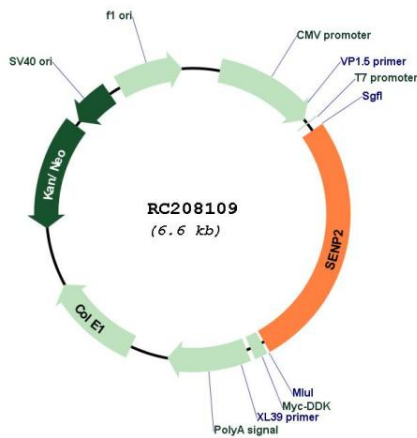
RefSeq Size: 3207 bp

RefSeq ORF: 1770 bp

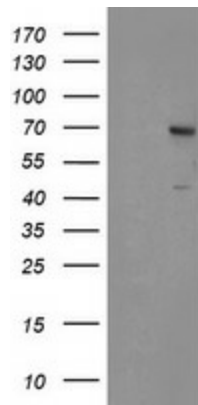
Locus ID: 59343

UniProt ID: [Q9HC62](#)
Cytogenetics: 3q27.2
Domains: Peptidase_C48
Protein Families: Druggable Genome, Protease
Protein Pathways: Wnt signaling pathway
MW: 68.3 kDa
Gene Summary: SUMO1 (UBL1; MIM 601912) is a small ubiquitin-like protein that can be covalently conjugated to other proteins. SENP2 is one of a group of enzymes that process newly synthesized SUMO1 into the conjugatable form and catalyze the deconjugation of SUMO1-containing species.[supplied by OMIM, Apr 2004]

Product images:



Circular map for RC208109



HEK293T cells were transfected with the pCMV6-ENTRY control (Cat# [PS100001], Left lane) or pCMV6-ENTRY SENP2 (Cat# RC208109, Right lane) cDNA for 48 hrs and lysed. Equivalent amounts of cell lysates (5 ug per lane) were separated by SDS-PAGE and immunoblotted with anti-SENP2(Cat# [TA504817]).