

Product datasheet for **RC208107**

CXCL16 (NM_022059) Human Tagged ORF Clone

Product data:

Product Type:	Expression Plasmids
Product Name:	CXCL16 (NM_022059) Human Tagged ORF Clone
Tag:	Myc-DDK
Symbol:	CXCL16
Synonyms:	CXCLG16; SR-PSOX; SRPSOX
Mammalian Cell Selection:	Neomycin
Vector:	pCMV6-Entry (PS100001)
E. coli Selection:	Kanamycin (25 ug/mL)
ORF Nucleotide Sequence:	>RC208107 ORF sequence Red=Cloning site Blue=ORF Green=Tags(s)

TTTTGTAATACGACTCACTATAGGGCGGCCGGAATTCGTCGACTGGATCCGGTACCGAGGAGATCTGCC
GCC**CGGATCGCC**

ATGTCTGGGAGTCAGAGCGAGGTGGCTCCATCCCCGCAGAGTCCGCGGAGCCCCGAGATGGGACGGGACT
TGCGGCCCGGGTCCGCGTGTCTCTGCTCCTGCTTCTGCTCCTGCTGGTGTACCTGACTCAGCCAGGCAA
TGGCAACGAGGGCAGCGTCACTGGAAGTTGTTATTGTGGTAAAAGAATTTCTTCCGACTCCCCGCCATCG
GTTCAAGTTCATGAATCGTCTCCGAAACACCTGAGAGCTTACCATCGGTGTCTATACTACACGAGGTTCC
AGCTCCTTTCTGGAGCGTGTGTGGAGGCAACAAGGACCCATGGGTTCAAGGAAATGATGAGCTGTCTTGA
TCTCAAAGAATGTGGACATGCTTACTCGGGATTGTGGCCACCAGAAGCATTACTTCTACCAGCCCC
CCAATTTCTCAGGCCTCAGAGGGGGCATCTTCAGATATCCACACCCTGCCAGATGCTCCTGTCCACCT
TGCAGTCCACTCAGCGCCCCACCCTCCCAGTAGGATCACTGTCCTCGGACAAAGAGCTCACTCGTCCCAA
TGAAACCACCAATTCACACTGCGGGCCACAGTCTGGCAGTTGGGCCTGAGGCTGGGGAGAACCAGAAGCAG
CCGAAAAAATGCTGGTCCCACAGCCAGGACATCAGCCACAGTGCCGGTCTGTGCCTCCTGGCCATCA
TCTTCATCCTCACCGCAGCCCTTCTATGTGCTGTGCAAGAGGAGGGGGCAGTCACCGCAGTCCTC
TCCAGATCTGCCGGTTCATTATATACCTGTGGCACCTGACTCTAATACC

ACGCGTACGCGGCCGCTCGAGCAGAACTCATCTCAGAAGAGGATCTGGCAGCAAATGATATCCTGGATT
ACAAGGATGACGACGATAAGGTTTAA



[View online »](#)

Protein Sequence: >RC208107 protein sequence
Red=Cloning site Green=Tags(s)

```

MSGSQSEVAPSPQSPRSPENGRDLRPGSRVLLLLLLLLL VYLTQPGNGNEGSVTGSCYCGKRISSDSPPS
VQFMNRLRKHLRAYHRCLYYTRFQLLSWSVCGGNKDPWVQELMSCLDLKECGHAYSGIVAHQKHLPTSP
PTSQASEGASSDIHTPAQMLLSTLQSTQRPTLPVGLSSDKELTRPNETTIHTAGHSLAVGPEAGENQKQ
PEKNAGPTARTSATVPVLCLLAIIIFILTAALSYVLCRRRRGQSPQSSPDLPVHYIPVAPDSNT
    
```

TRTRPLEQKLISEEDLAANDILDYKDDDDKV

Chromatograms: https://cdn.origene.com/chromatograms/mk6089_h08.zip

Restriction Sites: SgfI-MluI

Cloning Scheme:

Cloning sites used for ORF Shuttling:



* The last codon before the Stop codon of the ORF

ACCN: NM_022059

ORF Size: 819 bp

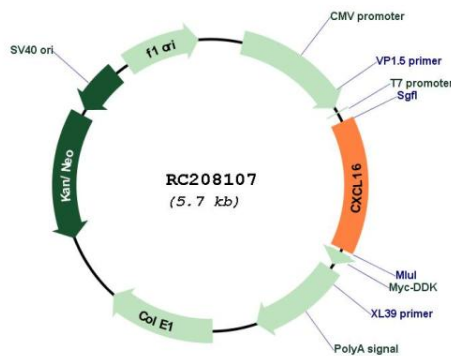
OTI Disclaimer: Due to the inherent nature of this plasmid, standard methods to replicate additional amounts of DNA in E. coli are highly likely to result in mutations and/or rearrangements. Therefore, OriGene does not guarantee the capability to replicate this plasmid DNA. Additional amounts of DNA can be purchased from OriGene with batch-specific, full-sequence verification at a reduced cost. Please contact our customer care team at custsupport@origene.com or by calling 301.340.3188 option 3 for pricing and delivery.

The molecular sequence of this clone aligns with the gene accession number as a point of reference only. However, individual transcript sequences of the same gene can differ through naturally occurring variations (e.g. polymorphisms), each with its own valid existence. This clone is substantially in agreement with the reference, but a complete review of all prevailing variants is recommended prior to use. [More info](#)

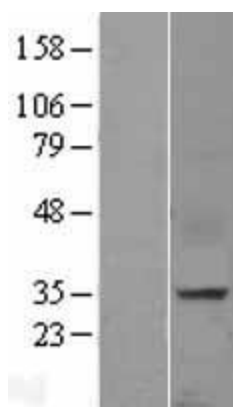
OTI Annotation: This clone was engineered to express the complete ORF with an expression tag. Expression varies depending on the nature of the gene.

Components:	The ORF clone is ion-exchange column purified and shipped in a 2D barcoded Matrix tube containing 10ug of transfection-ready, dried plasmid DNA (reconstitute with 100 ul of water).
Reconstitution Method:	<ol style="list-style-type: none"> 1. Centrifuge at 5,000xg for 5min. 2. Carefully open the tube and add 100ul of sterile water to dissolve the DNA. 3. Close the tube and incubate for 10 minutes at room temperature. 4. Briefly vortex the tube and then do a quick spin (less than 5000xg) to concentrate the liquid at the bottom. 5. Store the suspended plasmid at -20°C. The DNA is stable for at least one year from date of shipping when stored at -20°C.
RefSeq:	<u>NM_022059.1</u> , <u>NP_071342.1</u>
RefSeq Size:	2343 bp
RefSeq ORF:	822 bp
Locus ID:	58191
UniProt ID:	<u>Q9H2A7</u>
Cytogenetics:	17p13.2
Protein Families:	Druggable Genome, Secreted Protein, Transmembrane
Protein Pathways:	Chemokine signaling pathway, Cytokine-cytokine receptor interaction
MW:	29.5 kDa
Gene Summary:	Acts as a scavenger receptor on macrophages, which specifically binds to OxLDL (oxidized low density lipoprotein), suggesting that it may be involved in pathophysiology such as atherogenesis (By similarity). Induces a strong chemotactic response. Induces calcium mobilization. Binds to CXCR6/Bonzo.[UniProtKB/Swiss-Prot Function]

Product images:



Circular map for RC208107



Western blot validation of overexpression lysate (Cat# [LY420290]) using anti-DDK antibody (Cat# [TA50011-100]). Left: Cell lysates from untransfected HEK293T cells; Right: Cell lysates from HEK293T cells transfected with [RC218494] using transfection reagent MegaTran 2.0 (Cat# [TT210002]).