

## Product datasheet for RC208106

### POPDC2 (NM\_022135) Human Tagged ORF Clone

#### Product data:

Product Type:	Expression Plasmids
Product Name:	POPDC2 (NM_022135) Human Tagged ORF Clone
Tag:	Myc-DDK
Symbol:	POPDC2
Synonyms:	POP2
Mammalian Cell Selection:	Neomycin
Vector:	pCMV6-Entry (PS100001)
E. coli Selection:	Kanamycin (25 ug/mL)
ORF Nucleotide Sequence:	>RC208106 ORF sequence Red=Cloning site Blue=ORF Green=Tags(s)

TTTTGTAATACGACTCACTATAGGGCGGCCGGAATTCGTCGACTGGATCCGGTACCGAGGAGATCTGCC  
GCC**CGCATCGCC**

ATGAGCGCCAACAGCAGCAGAGTGGGCCAGCTTCTCTTGCAGGGTTCAGCGTGCATTAGGTGGAAGCAGG  
ATGTGGAAGGGGCTGTCTACCACCTAGCCAACCTGCCTCTACTCCTGGGTTTCATGGGGGCGAGTGGGGT  
GTATGGATGCTTCTATCTTTTGGCTTCTGAGTGCAGGTTACCTGTGCTGCGTGTGGGGCTGGTTC  
AGTGCCTGTGGCCTGGACATTGTTCTTTGGAGCTTCTGCTGGCTGTGGTCTGCCTGCTCCAGCTGGCAC  
ACCTGGTATACCGCTGCGTGAGGACACCCTCCCTGAGGAGTTTGACCTCCTCTACAAGACGCTGTGCCT  
GCCCTTGCAGGTGCCCTACAGACATACAAGGAGATTGTTCACTGCTGCGAGGAGCAGGTCTTAACCTCTG  
GCCACTGAACAGACCTATGCTGTGGAGGGTGAGACACCCATCAACCGCCTGTCCCTGCTGCTCTCTGGCC  
GGGTTCTGTGTGAGCCAGGATGGGCAGTTTCTGCACTACATCTTTCCATACCAGTTCATGGACTCTCCTGA  
GTGGGAATCACTACAGCCTTCTGAGGAGGGGTGTTCCAGGTCCTGACTGCTGAGACCTCATGTAGC  
TACATTTCTGGCCCGGAAAAGTCTCCATCTTCTTGACCAAAGAGCGGATACATCTCCTGCCTCTTCT  
CGGCTCTGCTGGGATATGACATCTCGGAGAAGCTTCACTCTCAATGACAAGCTTTTGCTAAGTTTGG  
GCTGCGCTTTGACATCCGCTTCCCAGCCTTACCATGTCTGGTCCCCTGCTGCAGATGCTGGACCA  
GAGTCCGAGAAGGGTGATGAGGAAGTCTGTGAGCCAGCTGTGCCCTCCTCAGGCCACACCCACCTCTC  
TCCAGCAAACACCCCTTGTCTACCCCTCCAGCTACCACCAACTTTCTGCACCTCCTACCCGGGCCAG  
GTTGTCCAGGCCAGACAGTGGCATACTGCTTCTAGAATTCCTCTCCAGAGCTACTCTCAAGTTATATCC  
AGGGGACAGGCCCTTTGGCTCCAACCCACACGCTGAACCT

**ACGCGT**ACGCGGCCGCTCGAGCAGAACTCATCTCAGAAGAGGATCTGGCAGCAAATGATATCCTGGATT  
ACAAGGATGACGACGATAAGGTTTAA



[View online »](#)



**Reconstitution Method:**

1. Centrifuge at 5,000xg for 5min.
2. Carefully open the tube and add 100ul of sterile water to dissolve the DNA.
3. Close the tube and incubate for 10 minutes at room temperature.
4. Briefly vortex the tube and then do a quick spin (less than 5000xg) to concentrate the liquid at the bottom.
5. Store the suspended plasmid at -20°C. The DNA is stable for at least one year from date of shipping when stored at -20°C.

**RefSeq:** [NM\\_022135.4](#)

**RefSeq Size:** 1667 bp

**RefSeq ORF:** 1095 bp

**Locus ID:** 64091

**UniProt ID:** [Q9HBU9](#)

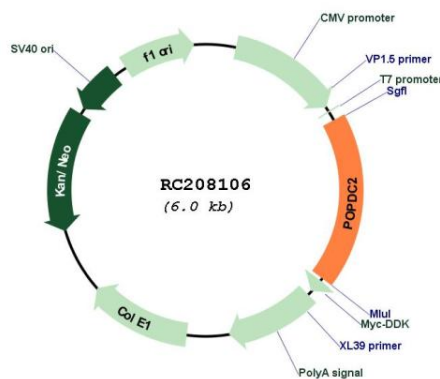
**Cytogenetics:** 3q13.33

**Protein Families:** Transmembrane

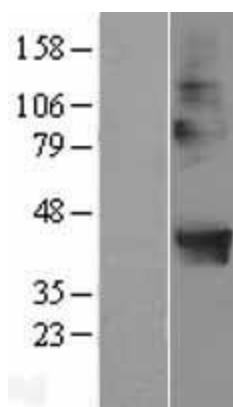
**MW:** 40.4 kDa

**Gene Summary:** This gene encodes a member of the POP family of proteins which contain three putative transmembrane domains. This membrane associated protein is predominantly expressed in skeletal and cardiac muscle, and may have an important function in these tissues. [provided by RefSeq, Jul 2008]

## Product images:



Circular map for RC208106



Western blot validation of overexpression lysate (Cat# [LY411755]) using anti-DDK antibody (Cat# [TA50011-100]). Left: Cell lysates from untransfected HEK293T cells; Right: Cell lysates from HEK293T cells transfected with RC208106 using transfection reagent MegaTran 2.0 (Cat# [TT210002]).