

Product datasheet for **RC208105**

CLNMT (CAMKMT) (NM_024766) Human Tagged ORF Clone

Product data:

Product Type:	Expression Plasmids
Product Name:	CLNMT (CAMKMT) (NM_024766) Human Tagged ORF Clone
Tag:	Myc-DDK
Symbol:	CLNMT
Synonyms:	C2orf34; Cam; CaM KMT; CLNMT; KMT
Mammalian Cell Selection:	Neomycin
Vector:	pCMV6-Entry (PS100001)
E. coli Selection:	Kanamycin (25 ug/mL)
ORF Nucleotide Sequence:	>RC208105 ORF sequence Red=Cloning site Blue=ORF Green=Tags(s)

TTTTGTAATACGACTCACTATAGGGCGGCCGGAATTCGTCGACTGGATCCGGTACCGAGGAGATCTGCC
GCC**CGATCGCC**

ATGGAGTCGCGAGTCGCGGACGCTGGGACCGGCGAGACCGCGGAGCAGCGGGCGGGAGTCCGGCAGTTG
GCTGCACCACTCGGGGGCCGTAGTCTCGGCGCCCTGGGAGCCGCCCGTGGAAGCTCCTGCGGCAGGT
TCTGAAGCAAAAACACCTGGATGATTGCCTGCGACATGTATCTGTAAGAAGATTTGAATCATTTAATCTG
TTTTTCAGTAACAGAAGGCAAAGAAAGGGAACTGAAGAGGAGTTGGTGCATGGTCCAATATAACAAGCA
TCTTCTGCTGAATACAGTATCTCCTTAAGGCATAATAGTGGATCCTTGAATGTTGAAGATGTCCTTAC
CAGCTTTGACAATACAGGAAATGTTTGATCTGGCCATCTGAAGAGGTTTTGGCTTACTACTGCCTCAAG
CACAATAATATATTCAGGGCCCTTGCTGTGTGTGAGCTAGGGGGTGGCATGACATGCTTGGCTGGGCTCA
TGGTTGCTATTTCTGCAGATGTCAAAGAAGTTCTGTTAACTGATGGGAATGAAAAGGCCATCAGAAATGT
GCAAGACATCATCACAAGGAATCAGAAGGCTGGTGTGTTAAGACCCAGAAAATATCAAGCTGCTTTTTA
CGATGGGATAATGAGACAGATGTCTCTCAACTGGAAGGACATTTTGACATTGTTATGTGTGCTGACTGCC
TGTTTCTGGACCACTACAGAGCCAGCCTTGTGATGCAATAAAGAGATTACTCCAGCCAGGGGAAAGC
GATGGTATTTGCCCCACGCCGAGGGAATACTTTAAACCACTTTTGAATCTAGCTGAAAAAGCTGGTTTC
TGTATCCAAAGACATGAAAATTATGATGAACACATTTCAAACCTTCCAAGTTGAAAAAGGAAAACC
CGGACATATATGAAGAAAACCTTCATTACCCGCTTCTGCTTATTTTGACCAACATGGA

ACGCGTACGCGGCCGCTCGAGCAGAAAACCTCATCTCAGAAGAGGATCTGGCAGCAATGATATCCTGGATT
ACAAGGATGACGACGATAAGGTTTAA



[View online »](#)

Protein Sequence: >RC208105 protein sequence
Red=Cloning site Green=Tags(s)

MESRVADAGTGETARAAGGSPAVGCTTRGPVVSAPLGAARWLLRQVLKQKHLDDCLRHVSVRRFESFNL
 FSVTEGKERETEEVGAWVQYTSIFCPEYSISLRHNSGSLNVEDVLTFSFDNTGNVCIWPSEEVLAYYCLK
 HNNIFRALAVCELGGGMTCLAGLMVAISADVKEVLLTDGNEKAIRNVQDIITRNQKAGVFKTKIISCF
 RWDNETDVSQLEGHFDIVMCADCLFLDQYRASLVDAIKRLLQPRGKAMVFAAPRRGNTLNQFCNLAEKAGF
 CIQRHENYDEHISNFHSLKKNPDIYEENLHYPLLLILTKHG

TRTRPLEQKLISEEDLAANDILDYKDDDDKV

Chromatograms: https://cdn.origene.com/chromatograms/mk6528_b09.zip

Restriction Sites: SgfI-MluI

Cloning Scheme:



ACCN: NM_024766

ORF Size: 969 bp

OTI Disclaimer: The molecular sequence of this clone aligns with the gene accession number as a point of reference only. However, individual transcript sequences of the same gene can differ through naturally occurring variations (e.g. polymorphisms), each with its own valid existence. This clone is substantially in agreement with the reference, but a complete review of all prevailing variants is recommended prior to use. [More info](#)

OTI Annotation: This clone was engineered to express the complete ORF with an expression tag. Expression varies depending on the nature of the gene.

Components: The ORF clone is ion-exchange column purified and shipped in a 2D barcoded Matrix tube containing 10ug of transfection-ready, dried plasmid DNA (reconstitute with 100 ul of water).

Reconstitution Method:

1. Centrifuge at 5,000xg for 5min.
2. Carefully open the tube and add 100ul of sterile water to dissolve the DNA.
3. Close the tube and incubate for 10 minutes at room temperature.
4. Briefly vortex the tube and then do a quick spin (less than 5000xg) to concentrate the liquid at the bottom.
5. Store the suspended plasmid at -20°C. The DNA is stable for at least one year from date of shipping when stored at -20°C.

RefSeq: [NM_024766.5](#)

RefSeq Size: 1584 bp

RefSeq ORF: 972 bp

Locus ID: 79823

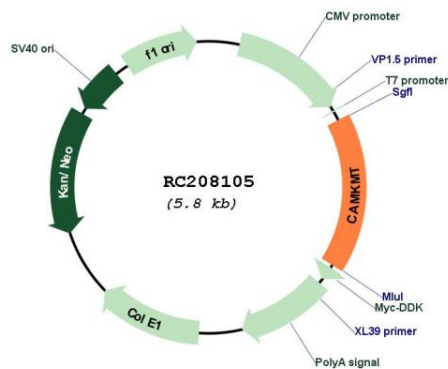
UniProt ID: [Q7Z624](#)

Cytogenetics: 2p21

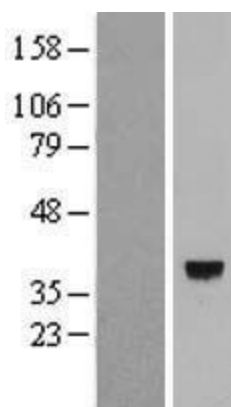
MW: 36.2 kDa

Gene Summary: This gene encodes a class I protein methyltransferase that acts in the formation of trimethyllysine in calmodulin. The protein contains a AdoMet-binding motif and may play a role in calcium-dependent signaling. [provided by RefSeq, Sep 2012]

Product images:



Circular map for RC208105



Western blot validation of overexpression lysate (Cat# [LY411078]) using anti-DDK antibody (Cat# [TA50011-100]). Left: Cell lysates from untransfected HEK293T cells; Right: Cell lysates from HEK293T cells transfected with RC208105 using transfection reagent MegaTran 2.0 (Cat# [TT210002]).