

## Product datasheet for **RC208103**

### SLAP2 (SLA2) (NM\_032214) Human Tagged ORF Clone

#### Product data:

Product Type:	Expression Plasmids
Product Name:	SLAP2 (SLA2) (NM_032214) Human Tagged ORF Clone
Tag:	Myc-DDK
Symbol:	SLAP2
Synonyms:	C20orf156; MARS; SLAP-2; SLAP2
Mammalian Cell Selection:	Neomycin
Vector:	pCMV6-Entry (PS100001)
E. coli Selection:	Kanamycin (25 ug/mL)
ORF Nucleotide Sequence:	>RC208103 ORF sequence Red=Cloning site Blue=ORF Green=Tags(s)

TTTTGTAATACGACTCACTATAGGGCGGCCGGAATTCGTCGACTGGATCCGGTACCGAGGAGATCTGCC  
GCC**CGATCGCC**

ATGGGAAGTCTGCCAGCAGAAGAAAACTCTGCCAAGCCCAAGCTTGAGTTCTCTGTCCAAGGCCAGG  
GACCTGTGACCATGGAAGCAGAGAGAAGCAAGGCCACAGCCGTGGCCCTGGGCAGTTTCCCGGCAGGTGG  
CCCGCCGAGCTGTCGTGAGACTCGGGGAGCCATTGACCATCGTCTCTGAGGATGGAGACTGGTGGACG  
GTGCTGTCTGAAGTCTCAGGCAGAGAGTATAACATCCCCAGCGTCCACGTGGCCAAAGTCTCCCATGGT  
GGCTGTATGAGGGCCTGAGCAGGGAGAAAGCAGAGGAAGTCTGTGTTACCTGGGAACCTGGAGGGGC  
CTTCTCATCCGGGAGAGCCAGACCAGGAGAGGCTCTTACTCTCTGTCTCAGTCCGCCTCAGCCGCCCTGCA  
TCTGGGACCGGATCAGACACTACAGGATCCACTGCCTTGACAATGGCTGGCTGTACATCTCACCGCACC  
TCACCTTCCCCTCACTCCAGGCCCTGGTGGACCATTACTCTGAGCTGGCGGATGACATCTGCTGCCTACT  
CAAGGAGCCCTGTGCTCTGCAGAGGGCTGGCCCGCTCCCTGGCAAGGATATACCCCTACCTGTGACTGTG  
CAGAGGACACCACTCAACTGAAAGAGCTGGACAGCTCCCTCCTGTTTTCTGAAGCTGCCACAGGGGAGG  
AGTCTCTTCTCAGTGAGGGTCTCCGGGAGTCCCTCAGTCTACATCAGCCTGAATGACGAGGCTGTCTC  
TTGGATGATGCC

**ACGCGT**ACGCGGCCGCTCGAGCAGAACTCATCTCAGAAGAGGATCTGGCAGCAAATGATATCCTGGATT  
ACAAGGATGACGACGATAAGGTTTAA



[View online »](#)

**Protein Sequence:** >RC208103 protein sequence  
Red=Cloning site Green=Tags(s)

MGSLPSRRKSLPSPSLSSSVQGGPVTMEAERSKATAVALGSFPAGGPAELSLRLGEPLTIVSEGDWWT  
 VLSEVSGREYNIPSVHVAKVSHGWL YEGLSREKAEELLLLPGNPGGAFL IRESQTRRGSYLSVRLSRPA  
 SWDRIRHYRIHCLDNGWLYISPRLTFPSLQALVDHYSELADDICLLKEPCVLQRAGPLPGKDIPLPVTV  
 QRTPLNWKELDSSLLFSEAATGEESLLSEGLRELSFYISLNDEAVSLDDA

TRTRPLEQKLISEEDLAANDILDYKDDDDKV

**Chromatograms:** [https://cdn.origene.com/chromatograms/mk6348\\_f05.zip](https://cdn.origene.com/chromatograms/mk6348_f05.zip)

**Restriction Sites:** SgfI-MluI

**Cloning Scheme:**

Cloning sites used for ORF Shuttling:



\* The last codon before the Stop codon of the ORF

**ACCN:** NM\_032214

**ORF Size:** 783 bp

**OTI Disclaimer:** The molecular sequence of this clone aligns with the gene accession number as a point of reference only. However, individual transcript sequences of the same gene can differ through naturally occurring variations (e.g. polymorphisms), each with its own valid existence. This clone is substantially in agreement with the reference, but a complete review of all prevailing variants is recommended prior to use. [More info](#)

**OTI Annotation:** This clone was engineered to express the complete ORF with an expression tag. Expression varies depending on the nature of the gene.

**Components:** The ORF clone is ion-exchange column purified and shipped in a 2D barcoded Matrix tube containing 10ug of transfection-ready, dried plasmid DNA (reconstitute with 100 ul of water).

**Reconstitution Method:**

1. Centrifuge at 5,000xg for 5min.
2. Carefully open the tube and add 100ul of sterile water to dissolve the DNA.
3. Close the tube and incubate for 10 minutes at room temperature.
4. Briefly vortex the tube and then do a quick spin (less than 5000xg) to concentrate the liquid at the bottom.
5. Store the suspended plasmid at -20°C. The DNA is stable for at least one year from date of shipping when stored at -20°C.

**RefSeq:** [NM\\_032214.4](#)

**RefSeq Size:** 2569 bp

**RefSeq ORF:** 786 bp

**Locus ID:** 84174

**UniProt ID:** [Q9H6Q3](#)

**Cytogenetics:** 20q11.23

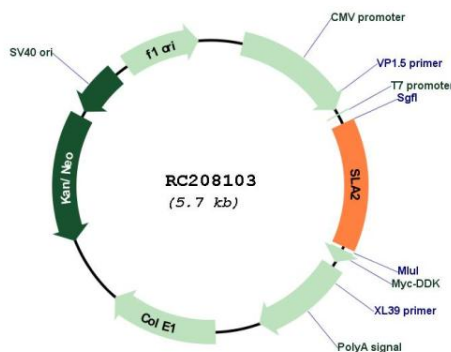
**Domains:** SH2, SH3

**Protein Families:** Druggable Genome, Transcription Factors

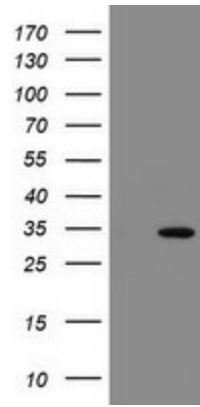
**MW:** 28.6 kDa

**Gene Summary:** This gene encodes a member of the SLAP family of adapter proteins. The encoded protein may play an important receptor-proximal role in downregulating T and B cell-mediated responses and inhibits antigen receptor-induced calcium mobilization. This protein interacts with Cas-Br-M (murine) ecotropic retroviral transforming sequence c. Two transcript variants encoding distinct isoforms have been identified for this gene. [provided by RefSeq, Jul 2008]

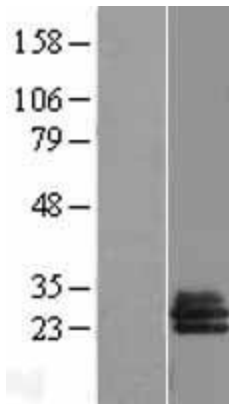
## Product images:



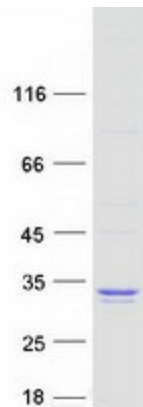
Circular map for RC208103



HEK293T cells were transfected with the pCMV6-ENTRY control (Cat# [PS100001], Left lane) or pCMV6-ENTRY SLA2 (Cat# RC208103, Right lane) cDNA for 48 hrs and lysed. Equivalent amounts of cell lysates (5 ug per lane) were separated by SDS-PAGE and immunoblotted with anti-SLA2(Cat# [TA505126]). Positive lysates [LY410277] (100ug) and [LC410277] (20ug) can be purchased separately from OriGene.



Western blot validation of overexpression lysate (Cat# [LY410277]) using anti-DDK antibody (Cat# [TA50011-100]). Left: Cell lysates from untransfected HEK293T cells; Right: Cell lysates from HEK293T cells transfected with RC208103 using transfection reagent MegaTran 2.0 (Cat# [TT210002]).



Coomassie blue staining of purified SLA2 protein (Cat# [TP308103]). The protein was produced from HEK293T cells transfected with SLA2 cDNA clone (Cat# RC208103) using MegaTran 2.0 (Cat# [TT210002]).