

## Product datasheet for **RC208094**

### WIPI1 (NM\_017983) Human Tagged ORF Clone

#### Product data:

Product Type:	Expression Plasmids
Product Name:	WIPI1 (NM_017983) Human Tagged ORF Clone
Tag:	Myc-DDK
Symbol:	WIPI1
Synonyms:	ATG18; ATG18A; WIPI49
Mammalian Cell Selection:	Neomycin
Vector:	pCMV6-Entry (PS100001)
E. coli Selection:	Kanamycin (25 ug/mL)



[View online »](#)

**ORF Nucleotide Sequence:**

>RC208094 ORF sequence  
 Red=Cloning site Blue=ORF Green=Tags(s)

TTTTGTAATACGACTCACTATAGGGCGGCCGGGAATTCGTCGACTGGATCCGGTACCGAGGAGATCTGCC  
 GCC**CGCATCGCC**

ATGGAGGCCGAGGCCGCGGACGCTCCCCGGGCGGGTTGAGTCGGCGCTCAGCTGCTTCTTTCAACC  
 AGGACTGCACATCCCTAGCAATTGGAACATAAGCCGGGATAAGCTGTTTTCTCTGAGTTCTGTGGAGCA  
 GCTGGATCAAGTCCACGGAAGCAATGAAATCCCGGACGTCTACATCGTGGAGCGCTCTTCTCCAGCAGC  
 CTGGTGGTGGTAGTCAGTCACACAAAACCAGGCAGATGAACGTGTATCACTTCAAGAAAGGCACAGAGA  
 TCTGTAATTACAGCTACTCCAGCAACATCTTGTCCATAAGGCTGAACCGCAAAGGCTGTGTTTGCCT  
 AGAAGAGTCCATTTATATTCACAACATTAAGACATGAAGCTGTTGAAGACCTCCTGGATATTCCTGCA  
 AACCCAACAGGTCTATGTGCTCTCTATCAACCATTCCAATTCTACCTGGCCTATCCTGGAAGCCTGA  
 CTTCAGGGGAGATTGTGCTTTATGATGGAACTCCCTGAAAACAGTCTGCACTATTGCTGCCATGAGGG  
 AACACTAGCTGCCATCACCTTCAATGCCTCAGGCTCCAACTAGCAAGTGCCTGAAAAAGGCACAGTC  
 ATCCGGGTGTTCTGTCCCTGATGGGCAAAGCTCTATGAGTTCGGAGAGGGATGAAAAGGTATGTGA  
 CAATCAGCTCTCTAGTGTTCAGTATGGATTCACAATTCCTCTGCGCCTCCAGTAACACCGAGACGGTACA  
 CATCTTCAAGCTGGAACAGGTCACCAACAGTCGACCAGAAGAGCCTTCGACCTGGAGTGGCTACATGGGA  
 AAGATGTTTATGGCTGCTACCAACTACCTCCCTACCCAGGTGTCAGACATGATGCATCAGGACAGGGCTT  
 TTGCCACTGCACGCTTGAACCTTCCGGACAGAGGAACATCTGTACCCTCAACGATCCAGAAGTTGCC  
 ACGGCTGCTAGTTGCGTCATCCAGTGGACACCTTTATATGTACAATTTGGATCCTCAGGATGGAGGAGAG  
 TGTGTCTTAATCAAACCCACAGCTTGTGGCTCAGGAACAACAGAAGAGAATAAGAAAATGACCTCA  
 GACCTTCCCTACCTCAGTCTTATGCAGCGACCGTAGCCAGACCAAGTGCATCTTCAGCCTCCACGGTGC  
 AGGTTATTCTGAGGACGGCGGGCGCTGCGAGGAGAAGTTATTCCTGAACATGAGTTTGGCAGCGGACCA  
 GTGTGCTTGATGATGAGAATGAGTTTCTCTATAATCTTGTGCCGTGAAATCAGAAGGGCAAACGA  
 AGCAGTCA

**ACGCGT**ACGCGGCCGCTCGAGCAGAACTCATCTCAGAAGAGGATCTGGCAGCAAATGATATCCTGGATT  
 ACAAGGATGACGACGATAAGGTTTAA

**Protein Sequence:**

>RC208094 protein sequence  
 Red=Cloning site Green=Tags(s)

MEAEAADAPPGVESALSCFSFNQDCTSLAIGTKAGYKLFSLSSVEQLDQVHGSNEIPDVYIVERLFSSS  
 LVVVVSHTKPRQMNVYHFKKGTEICNYSYSSNILSIRLNQRLLVCLSESIYIHNKMDKLLKLLDIPA  
 NPTGLCAL SINHSNSYLAYPGSLTSGEIVLYDGNLKTVCITIAHEGLAAITFNASGSKLASASEKGTV  
 IRVFSVPDGQKLYEFRGMKRYVTISSLVFSMDSQFLCASSNTEVHIFKLEQVTNSRPEEPSTWSGYMG  
 KMFMAATNYLPTQVSDMMHQDRAFATARLNFSGQRNICLSTIQKLPRLLVASSGHLMYNLDPDQDGE  
 CVLIKTHSLLGSGTTEENKENDLRPSLPQSYAATVARPSASSASTVPGYSEDGGALRGEVPEHEFATGP  
 VCLDDENEFPPIILCRGNQKGTKQS

**TR**TRPLEQKLISEEDLAANDILDYKDDDDKV

**Chromatograms:**

[https://cdn.origene.com/chromatograms/mk6089\\_h11.zip](https://cdn.origene.com/chromatograms/mk6089_h11.zip)

**Restriction Sites:**

Sgfl-MluI

**Cloning Scheme:**


**ACCN:** NM\_017983

**ORF Size:** 1338 bp

**OTI Disclaimer:** The molecular sequence of this clone aligns with the gene accession number as a point of reference only. However, individual transcript sequences of the same gene can differ through naturally occurring variations (e.g. polymorphisms), each with its own valid existence. This clone is substantially in agreement with the reference, but a complete review of all prevailing variants is recommended prior to use. [More info](#)

**OTI Annotation:** This clone was engineered to express the complete ORF with an expression tag. Expression varies depending on the nature of the gene.

**Components:** The ORF clone is ion-exchange column purified and shipped in a 2D barcoded Matrix tube containing 10ug of transfection-ready, dried plasmid DNA (reconstitute with 100 ul of water).

- Reconstitution Method:**
1. Centrifuge at 5,000xg for 5min.
  2. Carefully open the tube and add 100ul of sterile water to dissolve the DNA.
  3. Close the tube and incubate for 10 minutes at room temperature.
  4. Briefly vortex the tube and then do a quick spin (less than 5000xg) to concentrate the liquid at the bottom.
  5. Store the suspended plasmid at -20°C. The DNA is stable for at least one year from date of shipping when stored at -20°C.

**RefSeq:** [NM\\_017983.4](#)

**RefSeq Size:** 1939 bp

**RefSeq ORF:** 1341 bp

**Locus ID:** 55062

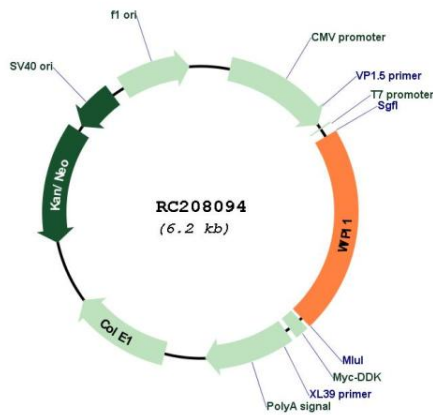
**UniProt ID:** [Q5MNZ9](#)

**Cytogenetics:** 17q24.2

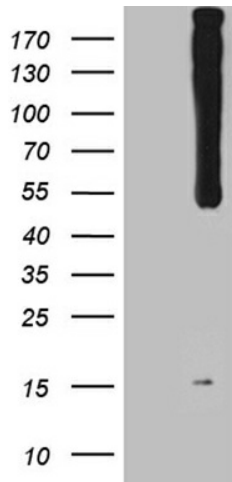
**Domains:** WD40  
**MW:** 48.7 kDa  
**Gene Summary:**

This gene encodes a WD40 repeat protein. Members of the WD40 repeat family are key components of many essential biologic functions. They regulate the assembly of multiprotein complexes by presenting a beta-propeller platform for simultaneous and reversible protein-protein interactions. Members of the WIPI subfamily of WD40 repeat proteins have a 7-bladed propeller structure and contain a conserved motif for interaction with phospholipids. Alternative splicing results in multiple transcript variants. [provided by RefSeq, Mar 2016]

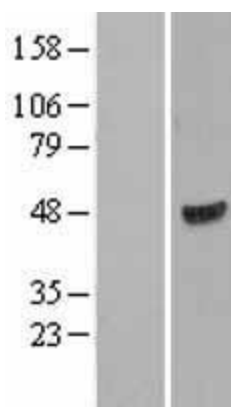
**Product images:**



Circular map for RC208094



HEK293T cells were transfected with the pCMV6-ENTRY control (Cat# [PS100001], Left lane) or pCMV6-ENTRY WIPI1 (Cat# RC208094, Right lane) cDNA for 48 hrs and lysed. Equivalent amounts of cell lysates (5 ug per lane) were separated by SDS-PAGE and immunoblotted with anti-WIPI1 (Cat# [TA811510])(1:2000). Positive lysates [LY402635] (100ug) and [LC402635] (20ug) can be purchased separately from OriGene.



Western blot validation of overexpression lysate (Cat# [LY402635]) using anti-DDK antibody (Cat# [TA50011-100]). Left: Cell lysates from untransfected HEK293T cells; Right: Cell lysates from HEK293T cells transfected with RC208094 using transfection reagent MegaTran 2.0 (Cat# [TT210002]).