

## Product datasheet for RC208087

### Prostaglandin D2 Receptor (PTGDR) (NM\_000953) Human Tagged ORF Clone

#### Product data:

Product Type:	Expression Plasmids
Product Name:	Prostaglandin D2 Receptor (PTGDR) (NM_000953) Human Tagged ORF Clone
Tag:	Myc-DDK
Symbol:	Prostaglandin D2 Receptor
Synonyms:	AS1; ASRT1; DP; DP1; PTGDR1
Mammalian Cell Selection:	Neomycin
Vector:	pCMV6-Entry (PS100001)
E. coli Selection:	Kanamycin (25 ug/mL)
ORF Nucleotide Sequence:	>RC208087 ORF sequence Red=Cloning site Blue=ORF Green=Tags(s)

TTTTGTAATACGACTCACTATAGGGCGCCGGGAATTCGTCGACTGGATCCGGTACCGAGGAGATCTGCC  
GCC**CGATCGCC**

ATGAAGTCGCGGTTCTACCGCTGCCAGAACACCACCTCTGTGAAAAAGGCAACTCGGCGGTGATGGGCG  
GGGTGCTCTTCAGCACCGGCTCCTGGCAACCTGCTGGCCCTGGGGCTGCTGGCGCGCTCGGGGCTGGG  
GTGGTGTCTCGCGGCTCCACTGCGCCCGCTGCCCTCGGTCTTCTACATGCTGGTGTGTGGCCTGACGGTC  
ACCGACTTGCTGGCAAGTGCCTCCTAAGCCCGGTGGTGTGGCTGCCTACGCTCAGAACCGGAGTCTGC  
GGGTGCTTGCGCCGATTGGACAACCTGTTGTGCCAAGCCTTCGCCTTCTTCATGTCCTTCTTTGGGCT  
CTCCTCGACACTGCAACTCCTGGCCATGGCACTGGAGTGTGGCTCTCCCTAGGGCACCCCTTCTTCTAC  
CGACGGACATCACCTGCGCCTGGGCGCACTGGTGGCCCGGTGGTGGAGCGCCTTCTCCCTGGCTTTCT  
GCGCGCTACCTTTCATGGGCTTCGGGAAGTTCGTGCACTACTGCCCGGCACCTGGTGTCTTATCCAGAT  
GGTCCACGAGGAGGGCTCGCTGTGGTGTGGGTAAGTCTGTGCTCTACTCCAGCCTCATGGCGTGTCTG  
GTCCTCGCACCGTGTGTGCAACCTCGGCGCCATGCGCAACCTCTATGCGATGCACCGGCGGCTGCAGC  
GGCACCCGCGCTCCTGCACCGGACTGTGCCGAGCCGCGCGGACGGGAGGGAAGCGTCCCCTCAGCC  
CCTGGAGGAGCTGGATCACCTCCTGCTGCTGGCGCTGATGACCGTGTCTTCACTATGTGTTCTCTGCCC  
GTAATTTATCGCGCTTACTATGGAGCATTTAAGGATGTCAAGGAGAAAAACAGGACCTCTGAAGAAGCAG  
AAGACCTCGAGCCTTGGGATTTCTATCTGTGATTTCAATTGTGGACCCTTGGATTTTATCATTTCAG  
ATCTCCAGTATTTTCGGATATTTTTTACAAAGATTTTCATTAGACCTCTTAGGTACAGGAGCCGGTGCAGC  
AATTCACATAACATGGAATCCAGTCTG

**ACGCGT**ACGCGGCCGCTCGAGCAGAAACTCATCTCAGAAGAGGATCTGGCAGCAAATGATATCCTGGATT  
ACAAGGATGACGACGATAAGGTTTAA



[View online »](#)

**Protein Sequence:** >RC208087 protein sequence  
Red=Cloning site Green=Tags(s)

MKSPFYRCQNTTSVEKGN SAVMGGVLFSTGLLGNLLALGLLARSGLGWCSRRLRPLPSVFYMLVCGLTV  
 TDLLGKCLLSPVLAAYAQNRSRLV LAPALDNSLCQAF AFMSFFGLSSTLQLLAMALECWL SLGHPFFY  
 RRHITLRLGALVAPVVS AFSLAF CALPFMGFGKFVQYCPGTWCFIQMVHEEGSLSVLGYSVLYSSLMALL  
 VLATVLCNLGAMRNL YAMHRR LQRHPR SCTR DCAEPRADGREAS PQLEELDHL LLLALMTVLF TMCSLP  
 VIYRAYYGAFKDVKEKNRTSEEAE DLRLRFLSVISIVDPWIF IIFRSPVFRIF FHKIFIRPLRYRSRCS  
 NSTNMESSL

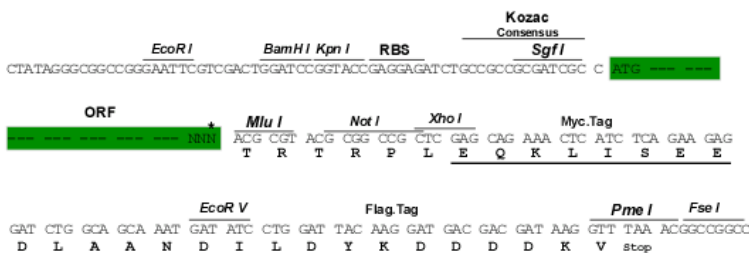
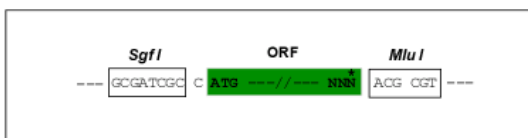
TRTRPLEQKLISEEDLAANDILDYKDDDDKV

**Chromatograms:** [https://cdn.origene.com/chromatograms/mk6088\\_c06.zip](https://cdn.origene.com/chromatograms/mk6088_c06.zip)

**Restriction Sites:** SgfI-MluI

**Cloning Scheme:**

Cloning sites used for ORF Shuttling:



\* The last codon before the Stop codon of the ORF

**ACCN:** NM\_000953

**ORF Size:** 1077 bp

**OTI Disclaimer:** The molecular sequence of this clone aligns with the gene accession number as a point of reference only. However, individual transcript sequences of the same gene can differ through naturally occurring variations (e.g. polymorphisms), each with its own valid existence. This clone is substantially in agreement with the reference, but a complete review of all prevailing variants is recommended prior to use. [More info](#)

**OTI Annotation:** This clone was engineered to express the complete ORF with an expression tag. Expression varies depending on the nature of the gene.

**Components:** The ORF clone is ion-exchange column purified and shipped in a 2D barcoded Matrix tube containing 10ug of transfection-ready, dried plasmid DNA (reconstitute with 100 ul of water).

**Reconstitution Method:**

1. Centrifuge at 5,000xg for 5min.
2. Carefully open the tube and add 100ul of sterile water to dissolve the DNA.
3. Close the tube and incubate for 10 minutes at room temperature.
4. Briefly vortex the tube and then do a quick spin (less than 5000xg) to concentrate the liquid at the bottom.
5. Store the suspended plasmid at -20°C. The DNA is stable for at least one year from date of shipping when stored at -20°C.

**RefSeq:** [NM\\_000953.3](#)

**RefSeq Size:** 2966 bp

**RefSeq ORF:** 1080 bp

**Locus ID:** 5729

**UniProt ID:** [Q13258](#)

**Cytogenetics:** 14q22.1

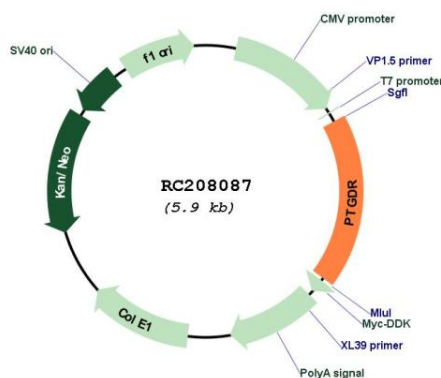
**Protein Families:** Druggable Genome, GPCR, Transmembrane

**Protein Pathways:** Neuroactive ligand-receptor interaction

**MW:** 40.3 kDa

**Gene Summary:** This gene encodes a member of the guanine nucleotide-binding protein (G protein)-coupled receptor (GPCR) superfamily. The receptors are seven-pass transmembrane proteins that respond to extracellular cues and activate intracellular signal transduction pathways. This protein is reported to be a receptor for prostaglandin D2, which is a mediator of allergic inflammation and allergic airway inflammation in asthma. Alternative splicing results in multiple transcript variants. [provided by RefSeq, Jul 2013]

## Product images:



Circular map for RC208087