

## Product datasheet for **RC208081**

### **C13orf33 (MEDAG) (NM\_032849) Human Tagged ORF Clone**

#### Product data:

Product Type:	Expression Plasmids
Product Name:	C13orf33 (MEDAG) (NM_032849) Human Tagged ORF Clone
Tag:	Myc-DDK
Symbol:	C13orf33
Synonyms:	AWMS3; C13orf33; hAWMS3; MEDA-4; MEDA4
Mammalian Cell Selection:	Neomycin
Vector:	pCMV6-Entry (PS100001)
E. coli Selection:	Kanamycin (25 ug/mL)
ORF Nucleotide Sequence:	>RC208081 representing NM_032849 Red=Cloning site Blue=ORF Green=Tags(s)

TTTTGTAATACGACTCACTATAGGGCGGCCGGAATTCGTCGACTGGATCCGGTACCGAGGAGATCTGCC  
GCC**CGATCGCC**

ATGGCGGGGGCGGCTGCGAGCCGGTGGCCAGGCCGAGCCTGACCTCCATCTCGTCTGGGGAGCTTCGCA  
GCCTGTGGACCTGCGACTGCGAGCTGGCCCTGCTGCCGCTGGCTCAGCTGCTGCGCCTGCAGCCCGGTGC  
CTTCCAGCTGAGCGGCGACCAGCTCGTGGTGGCCGGGCGGGAGCCGGCGGCGCGGGGGGGCTTC  
AACGTCTTCGGTGACGGCCTCGTGCCTCGACGGGCAGCTCTACCGCCTCAGCAGCTACATCAAGAGGT  
ATGTGGAAGTACCAACTACTGTGATTATAAAGACTACAGGAACTATATTGAGCAAACCAATGTTGTT  
CTTTATTAATGTACAGACCAAAAAGACACCTCAAAGAAAGGACGTACGCGTTTCTTGTAAACACGAGG  
CACCCCAAGATAAGAAGACAGATAGAGCAAGGGATGGACATGGTCATCTCCTCAGTGATTGGAGAAAGT  
ACCGGCTTCAGTTTGATTTTCAAGAGGCAGTGAAGAATTTCTTCCCCCAGGAAATGAAGTGGTAAATGG  
AGAAAATTAAGCTTTGCATATGAATTCAAAGCTGATGCATTATTTGATTTCTTCTATTGGTTCCGGCTC  
AGTAATCCGTTGTAAAAGTAAATGAAAAGTTCTGAATTTGTCAAGTACAAGTCCAGAAAAGAAGGAGA  
CGATTAAGTTATTTCTGGAAAAATGAGTGAGCCTTTAATCCGAAGGAGCAGTTTCTCTGACCGAAAGTT  
CAGTGAACTCCAGAGGTTCAATAGATGATGTTTTAACTGCAATCTGTCAACCCAGATCATCTCTGACA  
GAGCCTCTTTGGCAGAATTACCATTTCCAAGTGTCTGGAATCTGAAGAGACACCCAACCAATTTATC

AG**CGGACCG**ACGCGTACGCGGCCGCTCGAGCAGAACTCATCTCAGAAGAGGATCTGGCAGCAAATGATATCC  
TGGATTACAAGGATGACGACGATAAGGTTTAA



[View online »](#)

**Protein Sequence:** >RC208081 representing NM\_032849  
Red=Cloning site Green=Tags(s)

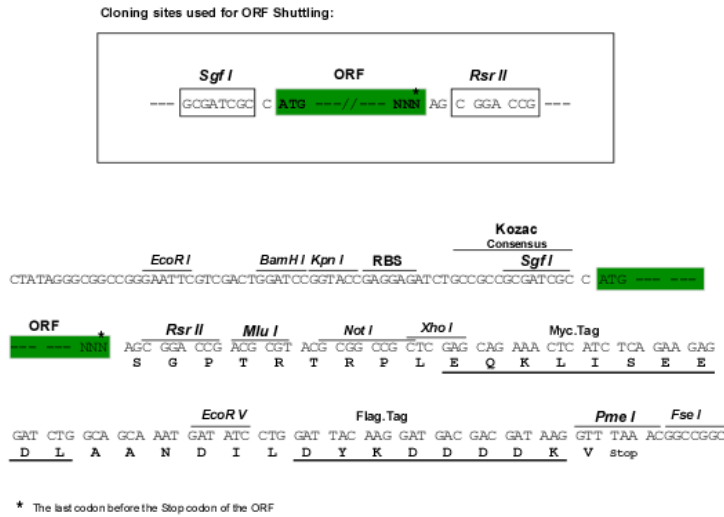
MAGAAACEPVARPSLTSISSGELRSLWTCDECELALLPLAQLRLQPGAFQLSGDQLVVAGPGEPAAARGGF  
 NVFGDGLVRLDGQLYRLSSYIKRYVELTNYCDYKDYRETILSKPMLFFINVQTKKDTSKERTYAFLVNTR  
 HPKIRRQIEQGMDMISSVIGESYRLQDFDQEAVKNFFPPGNVNVNENLSFAYEFKADALDFDFYWFGL  
 SNSVVKVNGKVLNLSSTSPEKKETIKLFLEKMSLEPLIRRSFSDRKFSVTSRGSIDDFVFNCLSPRSSLT  
 EPLLAELPFPSVLESEETPNQFI

SGPTRTRRLEQKLI SEEDLAANDILDYKDDDDKV

**Chromatograms:** [https://cdn.origene.com/chromatograms/ja1609\\_d05.zip](https://cdn.origene.com/chromatograms/ja1609_d05.zip)

**Restriction Sites:** SgfI-RsrII

**Cloning Scheme:**



**ACCN:** NM\_032849

**ORF Size:** 909 bp

**OTI Disclaimer:** The molecular sequence of this clone aligns with the gene accession number as a point of reference only. However, individual transcript sequences of the same gene can differ through naturally occurring variations (e.g. polymorphisms), each with its own valid existence. This clone is substantially in agreement with the reference, but a complete review of all prevailing variants is recommended prior to use. [More info](#)

**OTI Annotation:** This clone was engineered to express the complete ORF with an expression tag. Expression varies depending on the nature of the gene.

**Components:** The ORF clone is ion-exchange column purified and shipped in a 2D barcoded Matrix tube containing 10ug of transfection-ready, dried plasmid DNA (reconstitute with 100 ul of water).

**Reconstitution Method:**

1. Centrifuge at 5,000xg for 5min.
2. Carefully open the tube and add 100ul of sterile water to dissolve the DNA.
3. Close the tube and incubate for 10 minutes at room temperature.
4. Briefly vortex the tube and then do a quick spin (less than 5000xg) to concentrate the liquid at the bottom.
5. Store the suspended plasmid at -20°C. The DNA is stable for at least one year from date of shipping when stored at -20°C.

**RefSeq:** [NM\\_032849.2](#), [NP\\_116238.2](#)

**RefSeq Size:** 2342 bp

**RefSeq ORF:** 912 bp

**Locus ID:** 84935

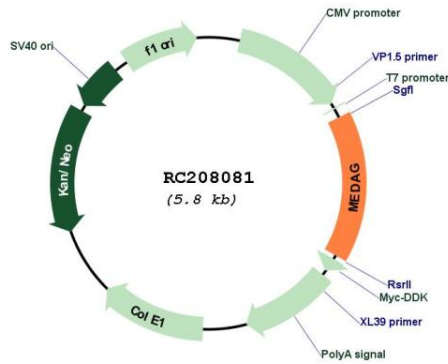
**UniProt ID:** [Q5VYS4](#)

**Cytogenetics:** 13q12.3

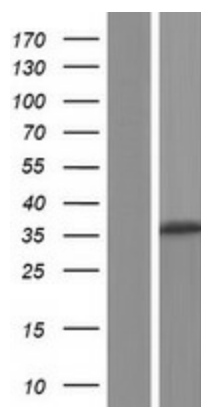
**MW:** 33.9 kDa

**Gene Summary:** Involved in processes that promote adipocyte differentiation, lipid accumulation, and glucose uptake in mature adipocytes.[UniProtKB/Swiss-Prot Function]

**Product images:**



Circular map for RC208081



Western blot validation of overexpression lysate (Cat# [LY409885]) using anti-DDK antibody (Cat# [TA50011-100]). Left: Cell lysates from untransfected HEK293T cells; Right: Cell lysates from HEK293T cells transfected with RC208081 using transfection reagent MegaTran 2.0 (Cat# [TT210002]).