

Product datasheet for **RC208076**

RALA (NM_005402) Human Tagged ORF Clone

Product data:

Product Type: Expression Plasmids
Product Name: RALA (NM_005402) Human Tagged ORF Clone
Tag: Myc-DDK
Symbol: RALA
Synonyms: HINCONS; RAL
Mammalian Cell Selection: Neomycin
Vector: pCMV6-Entry (PS100001)
E. coli Selection: Kanamycin (25 ug/mL)
ORF Nucleotide Sequence: >RC208076 ORF sequence
 Red=Cloning site Blue=ORF Green=Tags(s)

TTTTGTAATACGACTCACTATAGGGCGGCCGGAATTCGTCGACTGGATCCGGTACCGAGGAGATCTGCC
 GCC**CGATCGCC**

ATGGCTGCAAATAAGCCCAAGGGTCAGAATTCCTTGGCTTTACACAAAGTCATCATGGTGGGCAGTGGTG
 GCGTGGGCAAGTCAGCTCTGACTCTACAGTTTATGTACGATGAGTTTGTGGAGGACTATGAGCCTACCAA
 AGCAGACAGCTATCGGAAGAAGGTAGTCTAGATGGGGAGGAAGTCCAGATCGATATCTTAGATACAGCT
 GGGCAGGAGGACTACGCTGCAATTAGAGACAACACTTCCGAAGTGGGGAGGGTTCCTCTGTGTTTTCT
 CTATTACAGAAATGGAATCCTTTCAGCTACAGCTGACTTCAGGGAGCAGATTTAAGAGTAAAAGAAGA
 TGAGAATGTTCCATTTCTACTGGTTGGTAACAAATCAGATTTAGAAGATAAAAGACAGGTTTCTGTAGAA
 GAGGCAAAAAACAGAGCTGAGCAGTGGAATGTTAACTACGTGGAAACATCTGCTAAAAACAGAGCTAATG
 TTGACAAGGTATTTTTGATTTAATGAGAGAAATTCGAGCGAGAAAGATGGAAGACAGCAAGAAAAAGAA
 TGGAAAAAGAAGAGGAAAAGTTTAGCCAAGAGAATCAGAGAAAGATGCTGCATTTTA

ACGCGTACGCGGCCGCTCGAGCAGAAACTCATCTCAGAAGAGGATCTGGCAGCAATGATATCCTGGATT
 ACAAGGATGACGACGATAAGGTTTAA

Protein Sequence: >RC208076 protein sequence
 Red=Cloning site Green=Tags(s)

MAANKPKGQNSLALHKVIMVSGGVGKSALTLQFMYDEFVEDYEPTKADSYRKKVLDGEEVQIDILDTA
 GQEDYAAIRDNYFRSGEGFLCVFSITEMESFAATADFREQILRVKEDENVPFLLVGNKSDLEDKRQVSVE
 EAKNRAEQWNVVYVETSAKTRANVDKVFDFLMREIRARKMEDSKEKNGKKRKRSLAKRIRERCCIL

TRTRPLEQKLISEEDLAANDILDYKDDDDKV

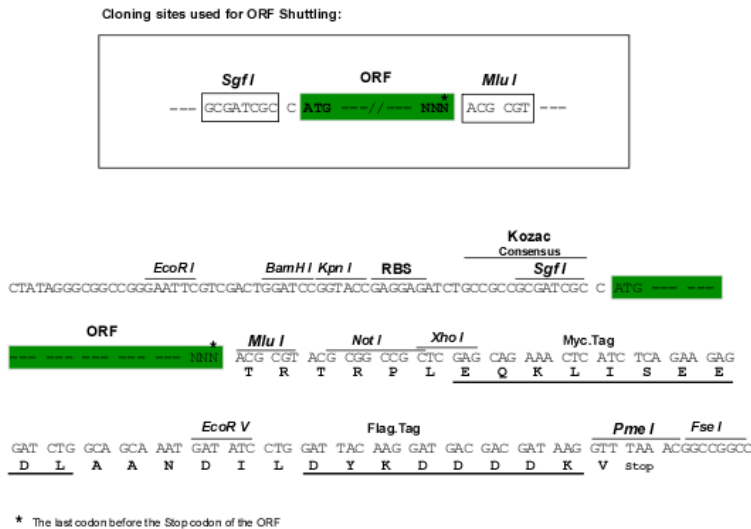


[View online »](#)

Chromatograms: https://cdn.origene.com/chromatograms/mk6268_c04.zip

Restriction Sites: SgfI-MluI

Cloning Scheme:



ACCN: NM_005402

ORF Size: 618 bp

OTI Disclaimer: The molecular sequence of this clone aligns with the gene accession number as a point of reference only. However, individual transcript sequences of the same gene can differ through naturally occurring variations (e.g. polymorphisms), each with its own valid existence. This clone is substantially in agreement with the reference, but a complete review of all prevailing variants is recommended prior to use. [More info](#)

OTI Annotation: This clone was engineered to express the complete ORF with an expression tag. Expression varies depending on the nature of the gene.

Components: The ORF clone is ion-exchange column purified and shipped in a 2D barcoded Matrix tube containing 10ug of transfection-ready, dried plasmid DNA (reconstitute with 100 ul of water).

Reconstitution Method:

1. Centrifuge at 5,000xg for 5min.
2. Carefully open the tube and add 100ul of sterile water to dissolve the DNA.
3. Close the tube and incubate for 10 minutes at room temperature.
4. Briefly vortex the tube and then do a quick spin (less than 5000xg) to concentrate the liquid at the bottom.
5. Store the suspended plasmid at -20°C. The DNA is stable for at least one year from date of shipping when stored at -20°C.

RefSeq: [NM_005402.4](#)

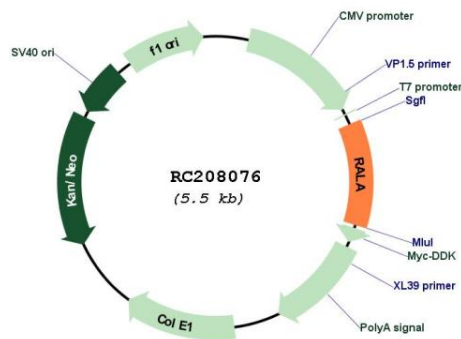
RefSeq Size: 2828 bp

RefSeq ORF: 621 bp

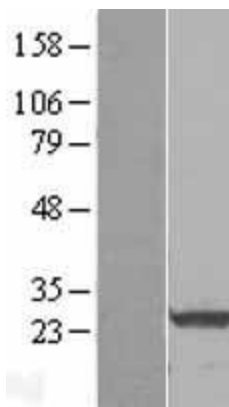
Locus ID: 5898

UniProt ID:	P11233
Cytogenetics:	7p14.1
Domains:	ras, RAN, RAS, RHO, RAB
Protein Families:	Druggable Genome
Protein Pathways:	Pancreatic cancer, Pathways in cancer
MW:	23.6 kDa
Gene Summary:	The product of this gene belongs to the small GTPase superfamily, Ras family of proteins. GTP-binding proteins mediate the transmembrane signaling initiated by the occupancy of certain cell surface receptors. This gene encodes a low molecular mass ras-like GTP-binding protein that shares about 50% similarity with other ras proteins. [provided by RefSeq, Jul 2008]

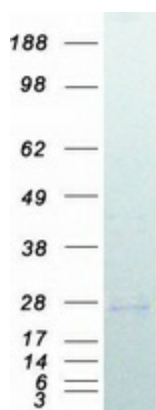
Product images:



Circular map for RC208076



Western blot validation of overexpression lysate (Cat# [LY417324]) using anti-DDK antibody (Cat# [TA50011-100]). Left: Cell lysates from untransfected HEK293T cells; Right: Cell lysates from HEK293T cells transfected with RC208076 using transfection reagent MegaTran 2.0 (Cat# [TT210002]).



Coomassie blue staining of purified RALA protein (Cat# [TP308076]). The protein was produced from HEK293T cells transfected with RALA cDNA clone (Cat# RC208076) using MegaTran 2.0 (Cat# [TT210002]).