

## Product datasheet for **RC208074L2V**

### ARHGEF6 (NM\_004840) Human Tagged ORF Clone Lentiviral Particle

#### Product data:

Product Type:	Lentiviral Particles
Product Name:	ARHGEF6 (NM_004840) Human Tagged ORF Clone Lentiviral Particle
Symbol:	ARHGEF6
Synonyms:	alpha-PIX; alphaPIX; Cool-2; COOL2; MRX46; PIXA
Mammalian Cell Selection:	None
Vector:	pLenti-C-mGFP (PS100071)
Tag:	mGFP
ACCN:	NM_004840
ORF Size:	2328 bp
ORF Nucleotide Sequence:	The ORF insert of this clone is exactly the same as(RC208074).
OTI Disclaimer:	The molecular sequence of this clone aligns with the gene accession number as a point of reference only. However, individual transcript sequences of the same gene can differ through naturally occurring variations (e.g. polymorphisms), each with its own valid existence. This clone is substantially in agreement with the reference, but a complete review of all prevailing variants is recommended prior to use. <a href="#">More info</a>
OTI Annotation:	This clone was engineered to express the complete ORF with an expression tag. Expression varies depending on the nature of the gene.
RefSeq:	<a href="#">NM_004840.2</a>
RefSeq Size:	5282 bp
RefSeq ORF:	2331 bp
Locus ID:	9459
UniProt ID:	<a href="#">Q15052</a>
Cytogenetics:	Xq26.3
Domains:	RhoGEF, SH3, CH, PH
Protein Families:	Druggable Genome



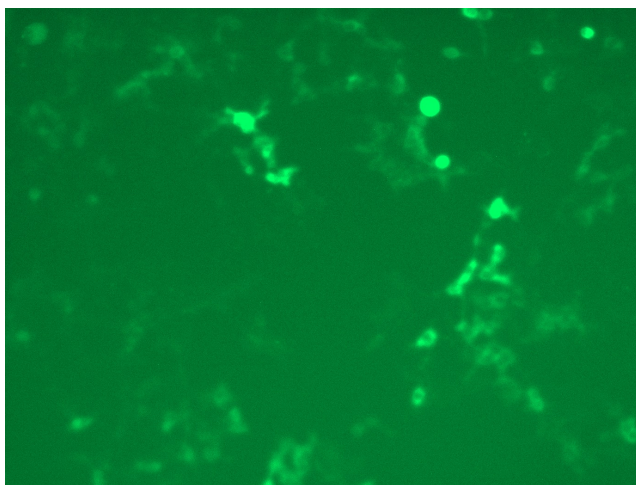
[View online »](#)

**Protein Pathways:** Pancreatic cancer, Regulation of actin cytoskeleton

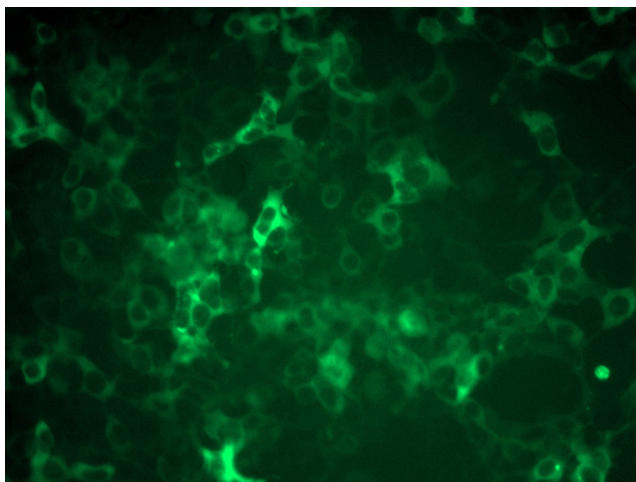
**MW:** 87.3 kDa

**Gene Summary:** Rho GTPases play a fundamental role in numerous cellular processes that are initiated by extracellular stimuli that work through G protein coupled receptors. The encoded protein belongs to a family of cytoplasmic proteins that activate the Ras-like family of Rho proteins by exchanging bound GDP for GTP. It may form a complex with G proteins and stimulate Rho-dependent signals. This protein is activated by PI3-kinase. Mutations in this gene can cause X-chromosomal non-specific cognitive disability. [provided by RefSeq, Jul 2008]

### Product images:



[RC208074L2] was used to prepare Lentiviral particles using [TR30037] packaging kit. HEK293T cells were transduced with RC208074L2V particle to overexpress human ARHGEF6-mGFP fusion protein.



[RC208074L2] was used to prepare Lentiviral particles using [TR30037] packaging kit. HEK293T cells were transduced with RC208074L2V particle to overexpress human ARHGEF6-mGFP fusion protein.