

Product datasheet for **RC208073**

TBC1D14 (NM_020773) Human Tagged ORF Clone

Product data:

Product Type:	Expression Plasmids
Product Name:	TBC1D14 (NM_020773) Human Tagged ORF Clone
Tag:	Myc-DDK
Symbol:	TBC1D14
Mammalian Cell Selection:	Neomycin
Vector:	pCMV6-Entry (PS100001)
E. coli Selection:	Kanamycin (25 ug/mL)



[View online »](#)

ORF Nucleotide
Sequence:

>RC208073 ORF sequence
Red=Cloning site Blue=ORF Green=Tags(s)

TTTTGTAATACGACTCACTATAGGGCGGCCGGGAATTCGTCGACTGGATCCGGTACCGAGGAGATCTGCC
GCC**CGGATCGCC**

ATGGGTATTCTGGATGGTCGACCAGGAAACCCCTTCAGAACCTGCAACACGTCAATCTCAAGGCGCCCC
GACTCCTCTCCGCGCCTGAGTACGGGCCAAGCTGAAACTCAGGGCTTTAGAAGACCGGCACAGCCTCCA
GTCCGTGGACTCGGGATTCTACCTGGAGATCGGGAACCCGGAGCCTGTACCCTGCAGCGCGGTCCAC
GTGAGGAGGAAGCAGTCCGACTCCGACCTCATCCCGAGCGGGCCTTCAGAGCGCCTGCGCGCTGCCAT
CCTGTGCGCCACCAGTCTTAGCAGCACCAGCGGGAACAGAGCGTGCAGAAATCTCCACGTTTCCAG
GACAGGCTATGACTCGGTAAGCTCTATAGCCGACCTCAAAGCCCTGACCCGAGCGATGATGTCTCC
GTCTGCAGCGTCCAGTCTTGGGACAGAGCTGTCCACCAGCTGTCCGTGAGCAATGAGGACATCTTGG
ACCTTGTGGTACGAGCAGTCCAGTCCATTGTGACCCTGGAGAATGACGATGACCCACAGTTTACCAA
CGTCACCTTGAGCTCTATCAAGGAAACCGTGGCTTACACCAGCAGGACTGTGTTTCAAGCTGAGGAG
GGGAGTAAATTGAAAATATTGGGGCCATTTAGTAACTTCTTTCGCAAGGAACTTGCTTGTAGAAAACAAA
GTGCAAGGCTTGACAAACACAATGACTTGGGATGGAAGTTATTTGGGAAAGCGCCACTCCGAGAGATGC
CCAGAAGGATTCAAAGAGAATACAGAAGGAATATGAAGACAAGGCTGGAAGACCTAGCAAGCCACCTCT
CCAAAGCAGAATGTGAGGAAGAATCTTGACTTTGAACCACTTCCACCACCGCACTCATCTCGAGGACA
GACCAGCAATCTCCAGCAAACACAGCTGAAGAAGCTCAGAAGCACAGACAGCAGTATGAAGAAATGGT
GGTTCAGGCCAAAAGCGAGAGCTGAAAGAAGCCAGCGAAGGAAGAAGCAGCTGGAAGAAAAGATGCAGA
GTGAGGAAAAGCATTGAAAACGCTGTGCTCACCTGGAATAATGAGATCTTACCTAACTGGGAAACAATGT
GGTGTCTAGAAAAGTTCGAGATTTATGGTGGCAGGGAATCCCTCCAAGTGTGAGAGGCAAAGTCTGGAG
CTTAGCCATTGGCAACGAGTTAAATATACCCACGAGCTCTTGGACATCTGTCTTGGCCGAGCAAGGAG
AGGTGGCGGTCCCTTAGCACAGGAGGCTCTGAAGTGGAGAACGAAGATGCTGGTTTTTCAGCAGCAGACA
GAGAAGCCAGTCTGGAGCTTATTAACCTGGACATTTCTAGAACATTTCTAATCTCTGCATTTTCCAGCA
AGGTGGTCCATATCATGACATGTTGCACAGTATTTGGGCGTTATACTTGTACCGCCAGATGTGGGT
TATGTCCAGGCGATGTCCTTCATAGCAGCAGTGTGATCTTGAACCTAGATACTGCAGATGCCTTTATTG
CCTTTTCTAACCTTCTGAATAAACCTGTCAAATGGCGTTTTTTAGAGTGGACCATGGCCTTATGTTGAC
TTATTTTGTGCTGATTTGAAGTATTTTGAAGAAAATTTGCCGAAATTTTGGCATTTCAGAAGAAC
AACCTAACTCCAGATATCTACCTAATTGATTGGATCTTACCTTATATAGTAAATCTCTGCCCTCGACC
TGGCCTGTGATCTGGGACGTGTTCTGTGCGGATGGGGAAGAGTTCCTGTTCCGCACGGCCTGGGCAT
CCTGAAGCTGTTGAGGACATCCTGACCAAGATGGACTTCATTACATGGCCAGTTCCTGACCCGGCTG
CCCAGGACCTGCCCGCCGAGGAGCTGTTTGCCTCCATCGCCACGATCCAGATGCAGAGCCGAAACAAGA
AGTGGGCTCAGGACTGACTGCATTGCAGAAAGACAGCCGGGAAATGGAGAAGGGAAGTCCATCCCTCCG
ACAC

ACGCGTACGCGGCCGCTCGAGCAGAACTCATCTCAGAAGAGGATCTGGCAGCAATGATATCTGGATT
ACAAGGATGACGACGATAAGGTTTAA

Protein Sequence: >RC208073 protein sequence
 Red=Cloning site Green=Tags(s)

MGILDGRPGNPLQNLQHVNLKAPRLLSAPEYGPVKLKLRALEDHRHLSQVSDSGIPTLEIGNPEPVPCSAVH
 VRRKQSDSDLIPERAFQSACALPSCAPPAPSSTEREQSVRKSSTFPRTGYDSVKLYSPTSKALTRSDVVS
 VCSVSSSLGTELSTTLVSNEDILDVVTSSSSAIVTLENDDPQFTNVTLSSEIKETRGLHQDCVHEAEE
 GSKLKILGPF SNFFARNLLARKQSARLDKHNDLGWKLFGKAPLRENAQKDSKRIQKEYEDKAGRPSPKPPS
 PKQNVNRKNLDFEPLSTTALILED RPANLPAPKAEAAQKHRQQYEEMVVQAKKRELKEAQRKKQLEERC
 VEESIGNAVLTWNNEILPNWETMWC SRKVRDLWWQGI PPSVVRGKVWSLAIGNELNITHELFDICLARA
 KE RWRSLSTGGSEVENEDAGFSAADREASLELIKLDISRTFPNLCIFQQGGPYHMLHSILGAYTCYRPDVG
 YVQGMFIAAVLILNLDTADAFIAFSNLLNKPCQMAFFRVDHGLMLTYAAFEVFFEENPKLFAHFCKN
 NLTPDIYLIDWIFLTKSLPLDLACRIWDVFCRDGEEFLFR TALGILKLFEDILTKMDFIHMAQFLTRL
 PEDLPAEELFASIATIQMSRNKKWAQVLTALQKDSREMEKGGSPSLRH

TRTRPLEQKLISEEDLAANDILDYKDDDDKV

Chromatograms: https://cdn.origene.com/chromatograms/mk6509_f07.zip

Restriction Sites: SgfI-MluI

Cloning Scheme:



ACCN: NM_020773

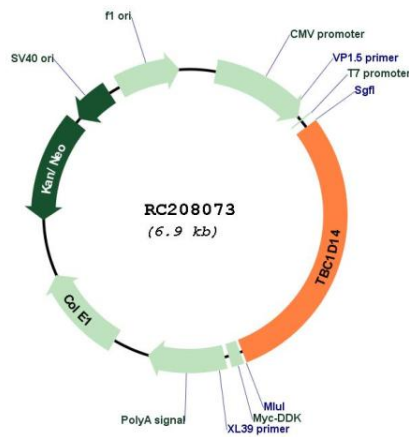
ORF Size: 2034 bp

OTI Disclaimer: The molecular sequence of this clone aligns with the gene accession number as a point of reference only. However, individual transcript sequences of the same gene can differ through naturally occurring variations (e.g. polymorphisms), each with its own valid existence. This clone is substantially in agreement with the reference, but a complete review of all prevailing variants is recommended prior to use. [More info](#)

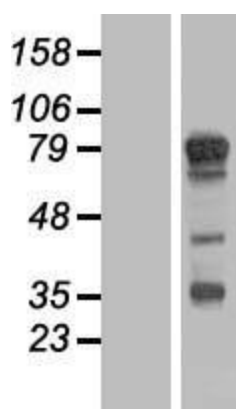
OTI Annotation: This clone was engineered to express the complete ORF with an expression tag. Expression varies depending on the nature of the gene.

Components:	The ORF clone is ion-exchange column purified and shipped in a 2D barcoded Matrix tube containing 10ug of transfection-ready, dried plasmid DNA (reconstitute with 100 ul of water).
Reconstitution Method:	<ol style="list-style-type: none"> 1. Centrifuge at 5,000xg for 5min. 2. Carefully open the tube and add 100ul of sterile water to dissolve the DNA. 3. Close the tube and incubate for 10 minutes at room temperature. 4. Briefly vortex the tube and then do a quick spin (less than 5000xg) to concentrate the liquid at the bottom. 5. Store the suspended plasmid at -20°C. The DNA is stable for at least one year from date of shipping when stored at -20°C.
RefSeq:	<u>NM_020773.1, NP_065824.1</u>
RefSeq Size:	5009 bp
RefSeq ORF:	2082 bp
Locus ID:	57533
UniProt ID:	<u>Q9P2M4</u>
Cytogenetics:	4p16.1
MW:	76.6 kDa
Gene Summary:	Negative regulator of starvation-induced autophagosome formation.[UniProtKB/Swiss-Prot Function]

Product images:



Circular map for RC208073



Western blot validation of overexpression lysate (Cat# [LY426401]) using anti-DDK antibody (Cat# [TA50011-100]). Left: Cell lysates from untransfected HEK293T cells; Right: Cell lysates from HEK293T cells transfected with [RC226098] using transfection reagent MegaTran 2.0 (Cat# [TT210002]).