

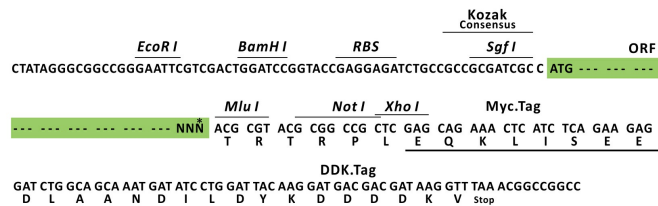
Product datasheet for RC208069L1

MTMR6 (NM_004685) Human Tagged Lenti ORF Clone

Product data:

Product Type:	Expression Plasmids
Product Name:	MTMR6 (NM_004685) Human Tagged Lenti ORF Clone
Tag:	Myc-DDK
Symbol:	MTMR6
Mammalian Cell Selection:	None
Vector:	pLenti-C-Myc-DDK (PS100064)
E. coli Selection:	Chloramphenicol (34 ug/mL)
ORF Nucleotide Sequence:	The ORF insert of this clone is exactly the same as(RC208069).
Restriction Sites:	SgfI-MluI
Cloning Scheme:	

Cloning sites used for ORF Shuttling:



* The last codon before the Stop codon of the ORF.

ACCN:	NM_004685
ORF Size:	1863 bp

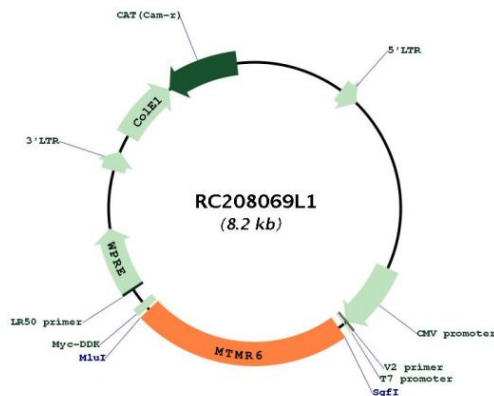


[View online >](#)

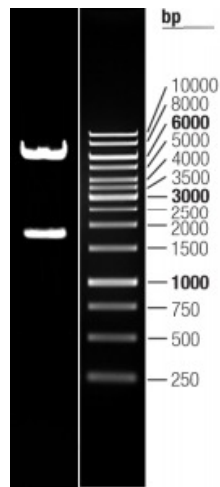
OTI Disclaimer:	The molecular sequence of this clone aligns with the gene accession number as a point of reference only. However, individual transcript sequences of the same gene can differ through naturally occurring variations (e.g. polymorphisms), each with its own valid existence. This clone is substantially in agreement with the reference, but a complete review of all prevailing variants is recommended prior to use. More info
OTI Annotation:	This clone was engineered to express the complete ORF with an expression tag. Expression varies depending on the nature of the gene.
Components:	The ORF clone is ion-exchange column purified and shipped in a 2D barcoded Matrix tube containing 10ug of transfection-ready, dried plasmid DNA (reconstitute with 100 ul of water).
Reconstitution Method:	<ol style="list-style-type: none">1. Centrifuge at 5,000xg for 5min.2. Carefully open the tube and add 100ul of sterile water to dissolve the DNA.3. Close the tube and incubate for 10 minutes at room temperature.4. Briefly vortex the tube and then do a quick spin (less than 5000xg) to concentrate the liquid at the bottom.5. Store the suspended plasmid at -20°C. The DNA is stable for at least one year from date of shipping when stored at -20°C.
RefSeq:	NM_004685.2
RefSeq Size:	4201 bp
RefSeq ORF:	1866 bp
Locus ID:	9107
UniProt ID:	Q9Y217
Cytogenetics:	13q12.13
Domains:	PTPc_motif
Protein Families:	Druggable Genome, Phosphatase
Protein Pathways:	Fructose and mannose metabolism, Metabolic pathways, Riboflavin metabolism, Thiamine metabolism
MW:	71.8 kDa

Gene Summary:

Phosphatase that acts on lipids with a phosphoinositol headgroup (PubMed:19038970, PubMed:22647598). Dephosphorylates phosphatidylinositol 3-phosphate (PtdIns(3)P) and phosphatidylinositol 3,5-bisphosphate (PubMed:19038970, PubMed:22647598) (Probable). Binds with high affinity to phosphatidylinositol 3,5-bisphosphate (PtdIns(3,5)P₂) but also to phosphatidylinositol 3-phosphate (PtdIns(3)P), phosphatidylinositol 4-phosphate (PtdIns(4)P), and phosphatidylinositol 5-phosphate (PtdIns(5)P), phosphatidic acid and phosphatidylserine (PubMed:19038970). Negatively regulates ER-Golgi protein transport (By similarity). Probably in association with MTMR9, plays a role in the late stages of macropinocytosis by dephosphorylating phosphatidylinositol 3-phosphate in membrane ruffles (PubMed:24591580). Acts as a negative regulator of KCNN4/KCa3.1 channel activity in CD4(+) T-cells possibly by decreasing intracellular levels of phosphatidylinositol 3-phosphate (PubMed:15831468). Negatively regulates proliferation of reactivated CD4(+) T-cells (PubMed:16847315). In complex with MTMR9, negatively regulates DNA damage-induced apoptosis (PubMed:19038970, PubMed:22647598). The formation of the MTMR6-MTMR9 complex stabilizes both MTMR6 and MTMR9 protein levels (PubMed:19038970). [UniProtKB/Swiss-Prot Function]

Product images:


Circular map for RC208069L1



Double digestion of RC208069L1 using SgfI and MluI