

Product datasheet for **RC208067**

BPI (NM_001725) Human Tagged ORF Clone

Product data:

Product Type:	Expression Plasmids
Product Name:	BPI (NM_001725) Human Tagged ORF Clone
Tag:	Myc-DDK
Symbol:	BPI
Synonyms:	BPIFD1; rBPI
Mammalian Cell Selection:	Neomycin
Vector:	pCMV6-Entry (PS100001)
E. coli Selection:	Kanamycin (25 ug/mL)



[View online »](#)

ORF Nucleotide Sequence:

>RC208067 ORF sequence
 Red=Cloning site Blue=ORF Green=Tags(s)

TTTTGTAATACGACTCACTATAGGGCGGCCGGGAATTCGTCGACTGGATCCGGTACCGAGGAGATCTGCC
 GCC**GCGATCGCC**

ATGAGAGAGAACTTGCCAGGGGCCCTTGCAACGCGCCGAGATGGGCGTCCCTGATGGTGTGGTCGCCA
 TAGGCACCGCCGTGACAGCGGCCGTCAACCCTGGCGTCGTGGTCAGGATCTCCAGAAGGGCCTGGACTA
 CGCCAGCCAGCAGGGGACGGCCGCTCTGCAGAAGGAGCTGAAGAGGATCAAGATTCCTGACTACTCAGAC
 AGCTTTAAGATCAAGCATCTTGGGAAGGGGCATTATAGCTTCTACAGCATGGACATCCGTGAATTCAGC
 TCCCAGTTCCCAGATAAGCATGGTGCCCAATGTGGGCCTTAAGTTCTCCATCAGCAACGCCAATATCAA
 GATCAGCGGAAATGGAAGGCACAAAAGAGATTCTTAAAAATGAGCGGCAATTTTGACCTGAGCATAGAA
 GGCATGTCCATTCGGCTGATCTGAAGCTGGGCAGTAACCCACGTCAGGCAAGCCACCATCACCTGCT
 CCAGCTGCAGCAGCCACATCAACAGTGTCCACGTGCACATCTCAAAGAGCAAAGTGGGGTGGCTGATCCA
 ACTCTCCACAAAAAATTGAGTCTGCGCTTCGAAACAAGATGAACAGCCAGGTCTGCGAGAAAGTGACC
 AATTCTGTATCCTCAAGCTGCAACCTTATTTCCAGACTCTGCCAGTAATGACCAAAAATAGATTCTGTGG
 CTGGAATCAACTATGGTCTGGTGGCACCTCCAGCAACCACGGCTGAGACCCTGGATGTACAGATGAAGGG
 GGAGTTTTACAGTGAGAACCACCACAATCCACCTCCCTTTGCTCCACCAGTGATGGAGTTTTCCCGTGCC
 CATGACCCGATGGTATACCTGGGCTCTCAGACTACTTCTTCAACACAGCCGGGCTTGTATACCAAGAGG
 CTGGGGTCTTGAAGATGACCCCTTAGAGATGACATGATTCCAAAGGAGTCCAAATTTGACTGACAACCA
 GTTCTTTGGAACCTTCTACCTGAGGTGGCCAAGAAGTTCCCAACATGAAGATACAGATCCATGTCTCA
 GCCTCCACCCGCCACACCTGTCTGTGCAGCCCACCGCCTTACCTTCTACCCTGCCGTGGATGTCCAGG
 CCTTTGCCGTCCCTCCCAACTCCTCCCTGGCTCCCTCTCCTGATTGGCATGCACACAATGGTTCAT
 GGAGGTGAGCGCCGAGTCCAACAGGCTTGTGGAGAGCTCAAGCTGGATAGGCTGCTCCTGGAAGTGAAG
 CACTCAAATATTGGCCCTTCCCGGTTGAATTGCTGCAGGATATCATGAACTACATTGTACCCATTCTTG
 TGCTGCCAGGGTTAACGAGAACTACAGAAAGGCTTCCCTCTCCCGACGCCGGCCAGAGTCCAGCTCTA
 CAACGTAGTGCTCAGCCTCACCAGAATCTCTGCTGTTCCGGTGCAGACGTTGTCTATAAA

ACGCGTACGCGGCCGCTCGAGCAGAAACTCATCTCAGAAGAGGATCTGGCAGCAAATGATATCCTGGATT
 ACAAGGATGACGACGATAAGGTTTAA

Protein Sequence:

>RC208067 protein sequence
 Red=Cloning site Green=Tags(s)

MRENLRGPCNAPRWASLMVLVAIGTAVTAAVNPVGVVVRISQKGLDYASQQGTAALQKELKRIKIPDYSD
 SFKIKHLGKGHYSFYSDIREFQLPSSQISMVNPVGLKFSISNANIKISGKWAQKRFLKMSGNFDLSIE
 GMSISADLKLGSNPTSGKPTITCSCSSHINSVHVHISKSKVGLIQLFHKKIESALRNKMNSQVCEKVT
 NSVSSKLQPYFQTLPVMTKIDSVAGINYGLVAPPATTAETLDVQMKGEFYSENHHNPPPFAPPVMEFPAA
 HDRMVYLGLSDYFFNTAGLVYQEAGVLKMTLRDDMIPKESKFRLLTKFFGTFLPEVAKKFPNMKIQIHVS
 ASTPPHLSVQPTGLTFYPAVDVQAFVLPNSSLASFLIGMHTTGSMESVAESNRLVGELKLDRLLELKL
 HSNIGPFPVELLQDIMNYIVPILVLPVNEKLQKGFPLPTPARVQLYNNVLQPHQNFLFLFGADVYK

TRTRPLEQKLISEEDLAANDILDYKDDDDKV

Chromatograms:

https://cdn.origene.com/chromatograms/mk6147_c11.zip

Restriction Sites:

Sgfl-Mlul

Cloning Scheme:

Cloning sites used for ORF Shutting:



* The last codon before the Stop codon of the ORF

ACCN: NM_001725

ORF Size: 1461 bp

OTI Disclaimer: The molecular sequence of this clone aligns with the gene accession number as a point of reference only. However, individual transcript sequences of the same gene can differ through naturally occurring variations (e.g. polymorphisms), each with its own valid existence. This clone is substantially in agreement with the reference, but a complete review of all prevailing variants is recommended prior to use. [More info](#)

OTI Annotation: This clone was engineered to express the complete ORF with an expression tag. Expression varies depending on the nature of the gene.

Components: The ORF clone is ion-exchange column purified and shipped in a 2D barcoded Matrix tube containing 10ug of transfection-ready, dried plasmid DNA (reconstitute with 100 ul of water).

Reconstitution Method:

1. Centrifuge at 5,000xg for 5min.
2. Carefully open the tube and add 100ul of sterile water to dissolve the DNA.
3. Close the tube and incubate for 10 minutes at room temperature.
4. Briefly vortex the tube and then do a quick spin (less than 5000xg) to concentrate the liquid at the bottom.
5. Store the suspended plasmid at -20°C. The DNA is stable for at least one year from date of shipping when stored at -20°C.

RefSeq: [NM_001725.2](#)
RefSeq Size: 1901 bp

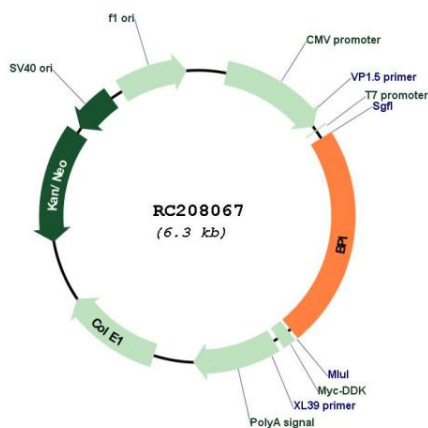
RefSeq ORF: 1452 bp

Locus ID: 671

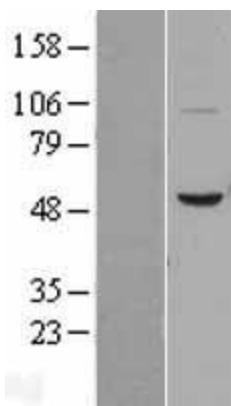
UniProt ID: [P17213](#)
Cytogenetics: 20q11.23

Domains: BPI1
Protein Families: Druggable Genome, Transmembrane
MW: 53.9 kDa
Gene Summary: This gene encodes a lipopolysaccharide binding protein. It is associated with human neutrophil granules and has antimicrobial activity against gram-negative organisms. [provided by RefSeq, Nov 2014]

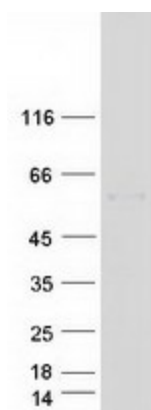
Product images:



Circular map for RC208067



Western blot validation of overexpression lysate (Cat# [LY400650]) using anti-DDK antibody (Cat# [TA50011-100]). Left: Cell lysates from un-transfected HEK293T cells; Right: Cell lysates from HEK293T cells transfected with RC208067 using transfection reagent MegaTran 2.0 (Cat# [TT210002]).



Coomassie blue staining of purified BPI protein (Cat# [TP308067]). The protein was produced from HEK293T cells transfected with BPI cDNA clone (Cat# RC208067) using MegaTran 2.0 (Cat# [TT210002]).