

Product datasheet for **RC208060**

NR2C1 (NM_001032287) Human Tagged ORF Clone

Product data:

Product Type:	Expression Plasmids
Product Name:	NR2C1 (NM_001032287) Human Tagged ORF Clone
Tag:	Myc-DDK
Symbol:	NR2C1
Synonyms:	TR2
Mammalian Cell Selection:	Neomycin
Vector:	pCMV6-Entry (PS100001)
E. coli Selection:	Kanamycin (25 ug/mL)



[View online »](#)

ORF Nucleotide Sequence:

>RC208060 ORF sequence
 Red=Cloning site Blue=ORF Green=Tags(s)

TTTTGTAATACGACTCACTATAGGGCGGCCGGAATTCGTCGACTGGATCCGGTACCGAGGAGATCTGCC
 GCC**CGGATCGCC**

ATGGCAACCATAGAAGAAATTGCACATCAAATTATTGAACAACAGATGGGAGAGATTGTTACAGAGCAGC
 AAACGGGCGAGAAAATCCAGATTGTGACAGCAGCTTGATCATAATACCCAAGGCAAGCAGTTCATTCTGAC
 AAATCACGACGGCTCTACTCCAAGCAAAGTCATTCTGGCCAGGCAAGATCCACTCCGGGAAAAGTTTTTC
 CTTAACAACCCAGATGCAGCAGGTGTCAACCAGTTATTTTTTACCCTCTGATCTGTCTGCACAACACC
 TGCAGCTCCTAACAGATAATTCTCCAGACCAAGGACCAAATAAGGTTTTTGTCTTTGCGTAGTATGTGG
 AGACAAAGCATCAGGACGTCATTATGGAGCAGTAACTTGTGAAGGCTGCAAAGGATTTTTTAAAAGAAGC
 ATCCGAAAAAATTTAGTATATTCATGTCGAGGATCAAAGGATTGTATTATTAATAAGCACCACCGAAACC
 GCTGTCAATACTGCAGGTTACAGAGATGTATTGCGTTTGAATGAAGCAAGACTCTGTCCAATGTGAAAG
 AAAACCCATTGAAGTATCACGAGAAAAATCTTCCAACCTGTCCGCTTCAACAGAAAAAATCTATATCCGA
 AAGGACCTTCGTAGCCATTAACCTGCAACTCCAACCTTTTGTAAACAGATAGTGAAAGTACAAGGTCAACAG
 GACTGTTAGATTCAGGAATGTTCAATATTCATCCATCTGGAGTAAAAACTGAGTCAGCTGTGCTGAT
 GACATCAGATAAGGCTGAATCATGTGAGGAGATTTAAGTACATTGGCCAATGTGGTTACATCATTAGCG
 AATCTTGGAAAACTAAAGATCTTTCTCAAAATAGTAATGAAATGTCTATGATTGAAAGCTTAAGCAATG
 ATGATACCTCTTTGTGTGAATTTCAAGAAATGCAGACCAACGGTGTGTTCAAGGGCATTGACTCT
 TGCAAAAGCATTGAATCCTGGAGAGACACAGCCTGCCAGAGCTCAGTAGCGGCATGGAAGGAAGTGTA
 CACCTAATCACTGGAGATTCAAGCATAAATTACACCGAAAAAGAGGGCCACTTCTCAGCGATTACATG
 TAGCTTTACAGGCTCACCATGCCTTCTCCTATGCCTGAGTACCTGAATGTGCACTACATTTGGGAGTCTGC
 CTCCAGACTGCTGTTCTTATCAATGCACTGGGCACTTTCGATTCTTCTTCCAGGCTCAGGGCAAGAA
 AACAGCATATCACTGGTGAAGCTTACTGGAATGAACTTTTTACTCTTGGTCTTGCCAGTGTGGCAAG
 TGATGAATGTAGCAACTATATTAGCAACATTTGTCAATTGTCTTCACAATAGTCTTCAACAAGCAGAGGG
 G

ACGCGTACGCGGCCGCTCGAGCAGAAACTCATCTCAGAAGAGGATCTGGCAGCAAATGATATCCTGGATT
 ACAAGGATGACGACGATAAGGTTTAA

Protein Sequence:

>RC208060 protein sequence
 Red=Cloning site Green=Tags(s)

MATIEEIAHQIIEQQMGEIVTEQQTGQKIQIVTALDHNTQGGKQFILTNDHGSTPSKVILARQDSTPGKVF
 LTTTPDAAGVNLFFFTTDLQAHLQLLTDNSPDQGNKVFVLCVCGDKASGRHYGAVTCEGCKGFFKRS
 IRKNLVYSCRGSKDCIINKHHRNRCQYRQLRQCIAFGMKQDSVQCERKPIEVSREKSSNCAASTEKIYIR
 KDLRSPLTATPTFVTDSESTRSTGLLDSGMFMNIHPSGVKTESAVLMTSDKAESCQGLSTLANVVTSLA
 NLGKTKDLSQNSNEMSMIESLSNDDTSLCEFQEMQTNGDVSRFDLAKALNPGESTACQSSVAGMEGSV
 HLITGDSSINYTEKEGPLLSDSHVAFRLTMPSPMPEYLVNHYIGESASRLLFLSMHWALSIPSFQALGQE
 NSISLVKAYWNEFLTLGLAQCWQVMNVATILATFVNCLHNSLQQAEG

TRTRPLEQKLISEEDLAANDILDYKDDDDKV

Chromatograms:

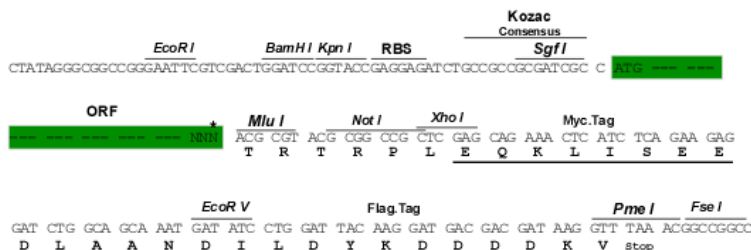
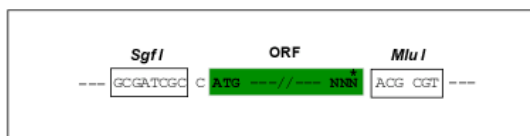
https://cdn.origene.com/chromatograms/mk6515_c08.zip

Restriction Sites:

Sgfl-MluI

Cloning Scheme:

Cloning sites used for ORF Shutting:



* The last codon before the Stop codon of the ORF

ACCN: NM_001032287

ORF Size: 1401 bp

OTI Disclaimer: The molecular sequence of this clone aligns with the gene accession number as a point of reference only. However, individual transcript sequences of the same gene can differ through naturally occurring variations (e.g. polymorphisms), each with its own valid existence. This clone is substantially in agreement with the reference, but a complete review of all prevailing variants is recommended prior to use. [More info](#)
OTI Annotation: This clone was engineered to express the complete ORF with an expression tag. Expression varies depending on the nature of the gene.

Components: The ORF clone is ion-exchange column purified and shipped in a 2D barcoded Matrix tube containing 10ug of transfection-ready, dried plasmid DNA (reconstitute with 100 ul of water).

Reconstitution Method:

1. Centrifuge at 5,000xg for 5min.
2. Carefully open the tube and add 100ul of sterile water to dissolve the DNA.
3. Close the tube and incubate for 10 minutes at room temperature.
4. Briefly vortex the tube and then do a quick spin (less than 5000xg) to concentrate the liquid at the bottom.
5. Store the suspended plasmid at -20°C. The DNA is stable for at least one year from date of shipping when stored at -20°C.

RefSeq: [NM_001032287.3](#)
RefSeq Size: 1903 bp

RefSeq ORF: 1404 bp

Locus ID: 7181

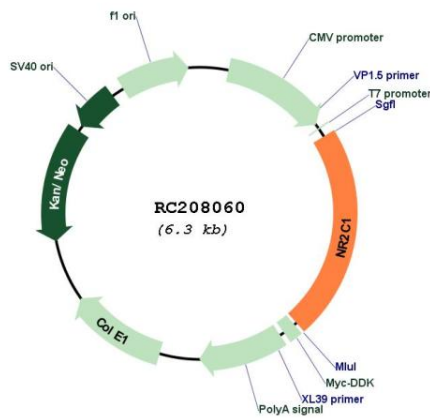
UniProt ID: [P13056](#)
Cytogenetics: 12q22

Protein Families: Druggable Genome, Nuclear Hormone Receptor, Transcription Factors

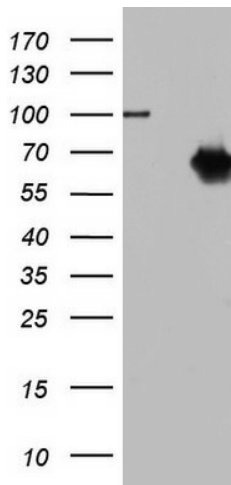
MW: 51.2 kDa

Gene Summary: This gene encodes a nuclear hormone receptor characterized by a highly conserved DNA binding domain (DBD), a variable hinge region, and a carboxy-terminal ligand binding domain (LBD) that is typical for all members of the steroid/thyroid hormone receptor superfamily. This protein also belongs to a large family of ligand-inducible transcription factors that regulate gene expression by binding to specific DNA sequences within promoters of target genes. Multiple alternatively spliced transcript variants have been described, but the full-length nature of some of these variants has not been determined. [provided by RefSeq, Jul 2008]

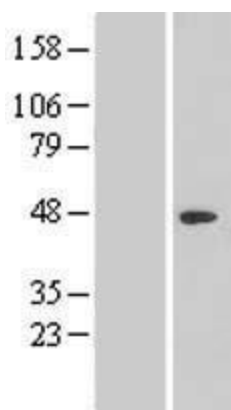
Product images:



Circular map for RC208060



HEK293T cells were transfected with the pCMV6-ENTRY control (Cat# [PS100001], Left lane) or pCMV6-ENTRY NR2C1 (Cat# RC208060, Right lane) cDNA for 48 hrs and lysed. Equivalent amounts of cell lysates (5 ug per lane) were separated by SDS-PAGE and immunoblotted with anti-NR2C1 (Cat# [TA803381]). Positive lysates [LY422297] (100ug) and [LC422297] (20ug) can be purchased separately from OriGene.



Western blot validation of overexpression lysate (Cat# [LY422297]) using anti-DDK antibody (Cat# [TA50011-100]). Left: Cell lysates from untransfected HEK293T cells; Right: Cell lysates from HEK293T cells transfected with RC208060 using transfection reagent MegaTran 2.0 (Cat# [TT210002]).