

Product datasheet for **RC208056**

RABEP1 (NM_004703) Human Tagged ORF Clone

Product data:

Product Type:	Expression Plasmids
Product Name:	RABEP1 (NM_004703) Human Tagged ORF Clone
Tag:	Myc-DDK
Symbol:	RABEP1
Synonyms:	RAB5EP; RABPT5
Mammalian Cell Selection:	Neomycin
Vector:	pCMV6-Entry (PS100001)
E. coli Selection:	Kanamycin (25 ug/mL)



[View online »](#)

ORF Nucleotide Sequence:

>RC208056 representing NM_004703
 Red=Cloning site Blue=ORF Green=Tags(s)

TTTTGTAATACGACTCACTATAGGGCGGCCGGAATTCGTGACTGGATCCGGTACCGAGGAGATCTGCC
 GCC**CGCATCGCC**

ATGGCGCAGCGGGCCCGCTTCCAGCCTGACGTTTCTTTCAGCAACGGGTAGCAGAATTGAAAAAA
 TTAATGCAGAATTTTACGTGCACAACAGCAGCTTGAACAAGAATTTAATCAAAAGAGAGCAAAATTTAA
 GGAGTTATATTTGGCTAAAGAGGAGGATCTGAAGAGGCAAAATGCAGTATTACAAGCTGCACAAGATGAT
 TTGGGACACCTTCGAACCCAGCTGTGGGAACTCAAGCAGAGATGGAGAATATTAAGCGATTGCCACAG
 TCTCTGAGAACACCAAGCAAGAAGCTATAGATGAAGTAAAAGACAGTGGAGAGAAGAAGTTGCTTCACT
 TCAGGCTGTTATGAAAGAAACAGTTCGTGACTATGAGCACCAGTCCACCTTAGGCTGGAGCAGGAGCGA
 ACACAGTGGGCACAGTATAGAGAATCCGCAGAGAGGAAATAGCTGATTTAAGAAGAAGGCTGTCTGAAG
 GTCAAGAGGAGGAAAATTTAGAAAATGAAATGAAAAGGCCCAAGAGGATGCTGAGAAAATTCGGTCCGT
 TGTGATGCCAATGAAAAGGAAATTCAGCTTTGAAGGATAAACTGACAGAGGCTGAAGACAAAATTA
 GAGCTGGAGGCCCTCAAAGGTTAAAGAACTGAATCATTATCTGGAAGCTGAGAAAATCTGTAGGACTGATC
 TAGAGATGTATGTAGCTGTTTTGAATACTCAGAAATCTGTTCTACAGGAAGATGCTGAGAAAATCGCGAA
 AGAATTGCATGAAGTTTGCCATCTCTTGGAGCAAGAGCGCAACAACACAACCAAGTAAAACATACGTGG
 CAGAAGGCCAATGACCAGTTTCTGGAACTCAGCGTTTACTGATGAGAGACATGCAGCGAATGGAGATTG
 TGCTAACTTCAGAACAGCTCCGACAAGTTGAAGAACTGAAGAAGAAAGATCAGGAGGATGATGAACAACA
 AAGACTCAATAAGAGAAAGGATCACAAAAAGCAGATGTTGAGGAAGAAATAAAATACCAAGTAGTGTGT
 GCTTTAACTCAAGAAGAATCTTCAGCCCAGTTATCAAATGAAGAGGAGCATTAGACAGCACCCCGTGGCT
 CAGTTTCACTTCTAGATGCAGGCTTGTGTTGCCATCTGGAGATCCTTTTCAGTAACTCGGACAATGACAT
 GTTTAAAGATGGACTCAGGAGAGCACAGTCTACAGACAGCTTGGGAACCTCGGGCTCATTGCAATCCAAA
 GCTTTAGGCTATAACTACAAAGCAAAATCTGCTGGAACCTGGACGAGTCAAGTTTTGGACCACTGGTAG
 GAGCAGATTCAGTGTCTGAGAACTTTGATACTGCATCCCTTGGGTCACTCCAGATGCCAAGTGGGTTTAT
 GTTAAACCAAGATCAGGAAAGAGCAATCAAGGCGATGACACCAGAACAAGAAGAGACAGCGTCCCTCCTC
 TCCAGCGTTACCCAGGGCATGGAGAGTGCCTATGTGTCCCTAGTGGTTATCGTTTAGTTAGTGAACAG
 AATGGAATCTCTGCAGAAAGAGGTACATAATGCTGGAATAAACTTGGTAGACGTTGTGATATGTGTTT
 CAATTACGAAAAACAGTTACAAGGAATTCAGATTCAGGAGGCTGAAACGAGAGACCAGGTAAAAAACTA
 CAGCTGATGCTAAGGCAAGCTAATGACCAGTTAGAGAAGACAATGAAAGATAAGCAGGAGCTGGAAGACT
 TCATAAAGCAAAGCAGCGAAGATTTCGAGTCAACAGATCTCTGCACTCGTCTTAAGAGCCAGGCCTCCGA
 GATCTTACTTGAAGAGTTACAGCAGGGGCTTTCCAGGCAAGAGGGATGTTTCAGGAACAGATGGCGGTG
 CTGATGCAGTACCGGGAACAGGTTTCAGAAGAGCTGGTGAAGTTACAGAAAGATAATGACAGTCTCCAGG
 GAAAGCACAGCCTGCATGTGTCATTACAGCAAGCAGAAGACTTCACTCCAGACACTACAGAGGCACT
 GCGGGAGTTGGTATTAATAACCGCGAGGACATCATTAAATGTGCGGACAGCAGCAGACCAGTAGAAGAA
 AAGCTGAAGGCTGAGATACTTTTCTAAAAGAGCAGATCCAAGCAGAACAGTGTTTAAAAGAAAATCTTG
 AAGAACTCTGCAACTAGAAATAGAAAAGTGAAGGAGGAAATAGCTTCTATTTAGCCTAAAAGCTGA
 ATTAGAAAAGATAAAAGTGGAAAAGGACAGTTGGAGTCCACATTAAGAGAGAAGTCTCAACAGCTTGAG
 AGTCTTCAGGAAATAAAGATCAGTTTGAAGAGCAGTTAAAGAAAAGAGACTGCTGCTAAGGCTACCGTTG
 AACAGCTAATGTTTGAAGAGAAGAACAAGCTCAGAGATTACAGACAGAATTAGATGTGAGTGAAGT
 CCAGAGAGATTTTGTAAAGCTTTACAGACCTTCAGGTGAGTTAGAGCGGATCCGGCAAGCTGACTCC
 TTGGAGAGAATCCGGCAATTCTGAATGATACTAACTGACAGACATTAACCAGTTCCTGAGACA

ACGCGTACGCGGCCGCTCGAGCAGAACTCATCTCAGAAGAGGATCTGGCAGCAATGATATCCTGGATT
 ACAAGGATGACGACGATAAGGTTTAA

Protein Sequence: >RC208056 representing NM_004703
 Red=Cloning site Green=Tags(s)

MAQPGPASQPDVSLQQRVAELEKINAFLRAQQQLEQEFNQKRAKFKEL YLAKEEDLKRQNAVLQAAQDD
 LGHLRTQLWEAQAEMENIKAIATVSENTKQEAIDEVKRQWREEVASLQAVMKETVRDYEHQFHLRLEQER
 TQWAQYRESAEREIADLRRRLSEGQEEENLENEMKKAQEDAELKRSVVMPEKEIAALKDKL TEAEDKIK
 ELEASKVKELNHYLEAEKSCRDTLEMYVAVLNTQKSVLQEDAELRKELHEVCHLLEQERQQHNQLKHTW
 QKANDQFLESQRLLMRDMQRMEIVLTSEQLRQVEELKKKQEDDEQQLNKRKDHKKADVEEEIKIPVVC
 ALTQEESSAQLSNEEEHLDSTRGSVHSLDAGLLLP SGDPF SKSDNDFKDG LRRRAQSTDSLGTSGSLQSK
 ALGYNKYAKSAGNLDESDFGPLVGADSVSENFDTASLGS LQMP SGFMLTKDQERAIKAMTPEQEETASLL
 SSVTQGMESAYVSPSGYRLVSETEWNLQKEVHNAGNKLGRRCMCSNYEKQLGGIQIQEAETRDQVKKL
 QMLRQANDQLEKTMKDKQLEDFIKQSSDSSHQISALV LRAQASEILLEELQQGLSQAKRDVQEQMAV
 LMQSREQVSEELVRLQKDNDSLQKHS LHVSLQQAEDFILPDTTEALRELVLKYREDIINVRTAADHVEE
 KLKAEILFLKEIQAEQCLKENLEETLQLEIENCKEEIASISSLKAELERIKVEKGQLESTLREKSQQLE
 SLQEIKISLLEEQLKKETA AKATVEQLMFEEKNAQRLQTELDVSEQVQRDFVKLSQTLQVQLERIRQADS
 LERIRAILNDTKLTDINQLPET

TRTRPLEQKLISEEDLAANDILDYKDDDDKV

Restriction Sites:

SgfI-MluI

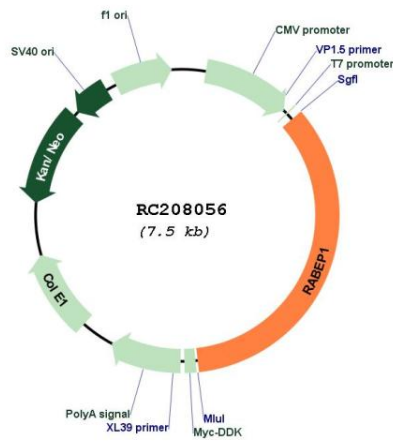
Cloning Scheme:



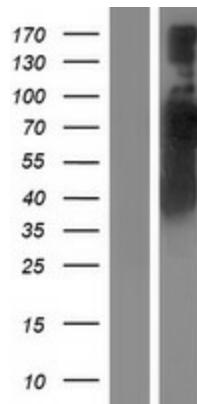
ACCN:	NM_004703
ORF Size:	2586 bp
OTI Disclaimer:	<p>Due to the inherent nature of this plasmid, standard methods to replicate additional amounts of DNA in E. coli are highly likely to result in mutations and/or rearrangements. Therefore, OriGene does not guarantee the capability to replicate this plasmid DNA. Additional amounts of DNA can be purchased from OriGene with batch-specific, full-sequence verification at a reduced cost. Please contact our customer care team at custsupport@origene.com or by calling 301.340.3188 option 3 for pricing and delivery.</p> <p>The molecular sequence of this clone aligns with the gene accession number as a point of reference only. However, individual transcript sequences of the same gene can differ through naturally occurring variations (e.g. polymorphisms), each with its own valid existence. This clone is substantially in agreement with the reference, but a complete review of all prevailing variants is recommended prior to use. More info</p>
OTI Annotation:	This clone was engineered to express the complete ORF with an expression tag. Expression varies depending on the nature of the gene.
Components:	The ORF clone is ion-exchange column purified and shipped in a 2D barcoded Matrix tube containing 10ug of transfection-ready, dried plasmid DNA (reconstitute with 100 ul of water).
Reconstitution Method:	<ol style="list-style-type: none"> 1. Centrifuge at 5,000xg for 5min. 2. Carefully open the tube and add 100ul of sterile water to dissolve the DNA. 3. Close the tube and incubate for 10 minutes at room temperature. 4. Briefly vortex the tube and then do a quick spin (less than 5000xg) to concentrate the liquid at the bottom. 5. Store the suspended plasmid at -20°C. The DNA is stable for at least one year from date of shipping when stored at -20°C.
RefSeq:	NM_004703.2
RefSeq Size:	5394 bp
RefSeq ORF:	2589 bp
Locus ID:	9135
UniProt ID:	Q15276
Cytogenetics:	17p13.2
Domains:	Rabaptin
Protein Pathways:	Endocytosis
MW:	99.1 kDa

Gene Summary:

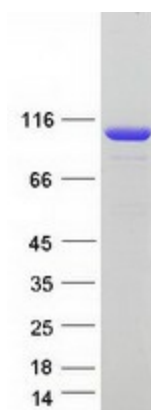
Rab effector protein acting as linker between gamma-adaptin, RAB4A and RAB5A. Involved in endocytic membrane fusion and membrane trafficking of recycling endosomes. Involved in KCNH1 channels trafficking to and from the cell membrane (PubMed:22841712). Stimulates RABGEF1 mediated nucleotide exchange on RAB5A. Mediates the traffic of PKD1:PKD2 complex from the endoplasmic reticulum through the Golgi to the cilium (By similarity). [UniProtKB/Swiss-Prot Function]

Product images:


Circular map for RC208056



Western blot validation of overexpression lysate (Cat# [LY417830]) using anti-DDK antibody (Cat# [TA50011-100]). Left: Cell lysates from untransfected HEK293T cells; Right: Cell lysates from HEK293T cells transfected with RC208056 using transfection reagent MegaTran 2.0 (Cat# [TT210002]).



Coomassie blue staining of purified RABEP1 protein (Cat# [TP308056]). The protein was produced from HEK293T cells transfected with RABEP1 cDNA clone (Cat# RC208056) using MegaTran 2.0 (Cat# [TT210002]).