

## Product datasheet for **RC208052**

### **C1orf2 (FAM189B) (NM\_198264) Human Tagged ORF Clone**

#### **Product data:**

Product Type:	Expression Plasmids
Product Name:	C1orf2 (FAM189B) (NM_198264) Human Tagged ORF Clone
Tag:	Myc-DDK
Symbol:	C1orf2
Synonyms:	C1orf2; COTE1
Mammalian Cell Selection:	Neomycin
Vector:	pCMV6-Entry (PS100001)
E. coli Selection:	Kanamycin (25 ug/mL)



[View online »](#)

**ORF Nucleotide Sequence:**

>RC208052 ORF sequence  
 Red=Cloning site Blue=ORF Green=Tags(s)

TTTTGTAATACGACTCACTATAGGGCGGCCGGGAATTCGTCGACTGGATCCGGTACCGAGGAGATCTGCC  
 GCC**GCGATCGCC**

ATGATGCCCTCGCTAGTGACTCCAGCCGCTCGTGACCAGCCGCCAGCACCAGGGCCCTTACCACC  
 TCCGCCTCCACCGACCCTGGCTGCAGGCCCTGCTTACGCTGGGGCTGGTCCAAGTGCTCCTGGGCATCCT  
 GGTGGTACCTTCAGCATGGTGGCCTCTCCGTCACCACCACCGAGAGCATCAAGAGTCTGCCCCGTCT  
 TGGGCTGGGTTCTCGAACCTGCTCTCAGCGTCTGTGGGCTACCATTTGTGCCGTATAATCTGTACAC  
 TCTCTGTATTGTCTGCTGCATCCAAATCTTCCCTGGACCTCGTGCATACGCTGGCCCTGAGCGGTC  
 AGTCTCAGGCCACTGGACCTCTGGGCTGCACGTCCCCGCCCCAGCCCTCTCTACACACCATGCTG  
 GACCTGGAGGAATTTGTCCCGCTGTGCCCCACCGCCCTACTATCCCCAGAGTATACCTGCAGCTCAG  
 AAACAGATGCACAGAGCATCACGTACAATGGCTCCATGGACAGCCAGTGCCTTGTACCCTACCGATTG  
 CCCCCCTTCTTATGAGGCAGTCATGGGACTACGAGGAGACAGCCAGGCCACTCTTTGACCCTCAGCTT  
 CACGATGGCTCGTGCATCTGTGAACGAGTGGCCTCCATTTAGACGTGTCCATGGACAGCGGGTCTCTGG  
 TGCTGTACGCCATTGGTGACCTCCCTGGGGCTCTAGCCCGTCGGAGGACTCGTGCTGTGGAGCTGCA  
 GGGCTCCGTGCGCTCCGTGGACTACGTTCTTTTCGCTCCATCCAGCGCAGCCGTGCCGGCTACTGCCTC  
 AGCCTGGACTGTGGCCTGCGGGGCCCTTCGAGGAAAGCCCCCTGCCACGGCGCCCCACGGGCTGCC  
 GCTCCTATTCTGCTCTGCCCTGAAGCTCCACCCCACTGGGTGCCCCACAGCTGCCCGCAGCTGCCA  
 CCGTTGGAGGGCTGGCCGCCCTGGTGGGACCCTGCTTCCCGAGCTGAGGCGGGGGTCCCCGGGGA  
 GGGGCGCCAGCCGAGCCCGCCACCCGAGCCCGACTCGTCGCTTACGCGATAGCTCAGTTTCCC  
 TCACCCACCGGGGCACCGCCCTCTCATCCGGCATCCCACCACCGCTGCTGCTGCCACGGTCCCACAG  
 CGACCCAGGCATCACGACCTCCAGTGACACTGCTGACTTCAGGGACCTTTATACCAAAGTGTGAGGAA  
 GAAGCTGCTTCTGTTTCTCTGCAGATACAGGGCTCTGCTCTGAAGCCTGCCTCTCCGCTAGCCCGCT  
 GCCCTTCCCCAAGTTGCTACGTGCCCGGTGAGCCGAGAAACGGCGCCCTGTGCCACCTTCCAAAAAGT  
 TCCCCTGCCCTCGGGCCCTGCACCTGCCACTCCCTGGGGACCTAAAGGGCAGCTGGCCAGGTGGGGC  
 CTGGTCACTCGTTTCTCCAGATATCCAGGAAAGCCCCAGACCCAGTGGGACTGGAGCTCATGGACATA  
 AGCAGGTGCCCGGAGCCTGTGGGGCCGGCTGGCCGAGAGACCTCCACCTTCGACGCTGCGGAGATCT  
 GAGCTTAGCTTCCCTGCGGCTCTCTGTCTGGCCGACAGGCTGGAGCGTGGTACCCGCCCCACAGC  
 CTCAGCCTCAACGGGGCAGCCGGGAGACTGGGCTC

**ACGCGT**ACGCGGGCCGCTCGAGCAGAAACTCATCTCAGAAGAGGATCTGGCAGCAAATGATATCCTGGATT  
 ACAAGGATGACGACGATAAGGTTTAA

**Protein Sequence:**

>RC208052 protein sequence  
 Red=Cloning site Green=Tags(s)

MMPSPSDSSRSLTSRPSTRGLTHLRLHRPWLQALLTLGLVQVLLGILVVTFSMVASSVTTTESIKRSCPS  
 WAGFSNLLFSVCGLTICAAIICITLSAIVCCIQIFSLDLVHTLAPERSVSGPLGPLGCTSPPPAPLLHTML  
 DLEEFVPPVPPPPYPPEYTCSSSETDAQSITYNGSMDSPVPLYPTDCPPSYEAVMGLRGDSQATLFDPLQ  
 HDGSCICERVASIVDVSMDSGLVLSAIGDLPGGSSPSEDSCLLELQGSVRSVDYVLFRSIQRSRAGYCL  
 SLDCGLRGPFEESPLPRRPPRAARSYSCSAPEAPPPLGAPTAARSCHRLEGWPPWVGPCFPELRRRVPRG  
 GGRPAAAPTRAPTRRFSDSSGSLTPPGHRPPHPASPPPLLLPRSHSDPGITTSDDTADFRDLYTKVLEE  
 EAASVSSADTGLCSEACLFRLARCPSPKLLRARSAEKRRPVPTFQKVPLPSGPAPAHSLGDLKGSWPGRG  
 LVTRFLQISRKAPDPSGTGAHGKQVPRSLWGRPGRESLHLRSCGDLSSSSLRRLLSGRRLERGRPHS  
 LSLNGSRETGL

**TR**TRPLEQKLISEEDLAANDILDYKDDDDKV

**Chromatograms:**

[https://cdn.origene.com/chromatograms/mk6342\\_e06.zip](https://cdn.origene.com/chromatograms/mk6342_e06.zip)

**Restriction Sites:**

Sgfl-Mlul

**Cloning Scheme:**


**ACCN:** NM\_198264

**ORF Size:** 1716 bp

**OTI Disclaimer:** The molecular sequence of this clone aligns with the gene accession number as a point of reference only. However, individual transcript sequences of the same gene can differ through naturally occurring variations (e.g. polymorphisms), each with its own valid existence. This clone is substantially in agreement with the reference, but a complete review of all prevailing variants is recommended prior to use. [More info](#)

**OTI Annotation:** This clone was engineered to express the complete ORF with an expression tag. Expression varies depending on the nature of the gene.

**Components:** The ORF clone is ion-exchange column purified and shipped in a 2D barcoded Matrix tube containing 10ug of transfection-ready, dried plasmid DNA (reconstitute with 100 ul of water).

**Reconstitution Method:**

1. Centrifuge at 5,000xg for 5min.
2. Carefully open the tube and add 100ul of sterile water to dissolve the DNA.
3. Close the tube and incubate for 10 minutes at room temperature.
4. Briefly vortex the tube and then do a quick spin (less than 5000xg) to concentrate the liquid at the bottom.
5. Store the suspended plasmid at -20°C. The DNA is stable for at least one year from date of shipping when stored at -20°C.

**RefSeq:** [NM\\_198264.2](#)

**RefSeq Size:** 2921 bp

**RefSeq ORF:** 1719 bp

**Locus ID:** 10712

**UniProt ID:** [P81408](#)

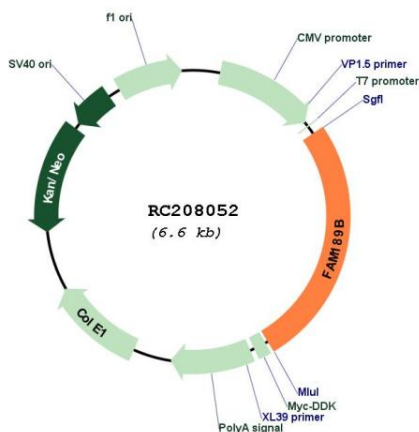
**Cytogenetics:** 1q22

**Protein Families:** Transmembrane

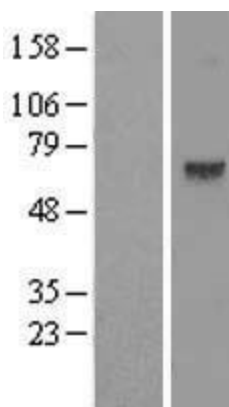
**MW:** 61.1 kDa

**Gene Summary:** This gene is located near the gene for the lysosomal enzyme glucosylceramidase; a deficiency in this enzyme is associated with Gaucher disease. The encoded protein has been identified as a potential binding partner of a WW domain-containing protein which is involved in apoptosis and tumor suppression. Alternative splicing results in multiple transcript variants. [provided by RefSeq, Dec 2010]

**Product images:**



Circular map for RC208052



Western blot validation of overexpression lysate (Cat# [LY404992]) using anti-DDK antibody (Cat# [TA50011-100]). Left: Cell lysates from untransfected HEK293T cells; Right: Cell lysates from HEK293T cells transfected with RC208052 using transfection reagent MegaTran 2.0 (Cat# [TT210002]).