

Product datasheet for **RC208049**

HIRA (NM_003325) Human Tagged ORF Clone

Product data:

Product Type: Expression Plasmids
Product Name: HIRA (NM_003325) Human Tagged ORF Clone
Tag: Myc-DDK
Symbol: HIRA
Synonyms: DGCR1; TUP1; TUPLE1
Mammalian Cell Selection: Neomycin
Vector: pCMV6-Entry (PS100001)
E. coli Selection: Kanamycin (25 ug/mL)
ORF Nucleotide Sequence: >RC208049 representing NM_003325
Red=Cloning site Blue=ORF Green=Tags(s)

TTTTGTAATACGACTCACTATAGGGCGGCCGGAATTCGTCGACTGGATCCGGTACCGAGGAGATCTGCC
GCC**CGATCGCC**

ATGAAGCTCCTGAAGCCGACCTGGGTCAACCACAATGGCAAGCCGATTTTTTCAGTTGATATTCACCCTG
ACGGGACCAAGTTCGCAACTGGAGGACAAGGGCAGGATTCTGGGAAGGTTGTGATCTGGAATATGTCTCC
AGTCTCCAGGAGGATGACGAGAAGGATGAAAAATTTCCCAAGATGCTTTGCCAGATGGACAATCACTTA
GCATGTGTGAAGTGTGTGCGGTGGTCAAACAGTGGGATGATTTAGCTTCTGGGGGAGATGACAACTGA
TTATGGTGTGGAAGCGGGCTACGTACATCGGCCCCAGCACCGTGTTCGGCTCCAGTGGTAAGCTTGCCAA
TGTGGAGCAGTGGCGGTGTGTCTATCCTCCGGAATCATTTCAGGCGATGTGATGGATGTAGCATGGTCT
CCCCACGATGCCTGGCTAGCCTCATGCAGCGTGGATAAAGTGTGCTGATCTGGAATGCTGTAAAGTTCC
CAGAAATCTAGTACTCTGAGAGGTCATTCTGGCTTGGTCAAAGGGTTGACATGGGACCCTGTTGGTAA
ATACATAGCTTCTCAAGCTGATGACCGCAGCCTAAAGGTGTGGAGGACGCTGGACTGGCAGTTGGAGACC
AGCATACCAAGCCTTTTGATGAGTGTGGAGGAACGACCCATGTGTTGCGGCTCAGCTGGTACCTGATG
GGCATTACCTGGTGTCTGCCATGCCATGAACAACTCAGGCCCACTGCCAGATCATCGAACGGGAGGG
ATGGAAGACCAACATGGACTTTGTTGGCACCGGAAAGCTGTGACTGTCTGAAATCAACCCAAAAATC
TTCAAAAAGAAGCAGAAGAATGGGAGTTCTGCGAAGCCTAGCTGCCCGTACTGCTGTGCTGTTGGCA
GCAAGGACCGCTCGCTTTCTGTCTGGCTCACATGTCTGAAACGGCCGCTGGTGGTATCCATGAACTGTT
TGACAAATCCATCATGGATATTTCTGGACTCTGAATGGGCTGGGCATCTTGGTATGCTCTATGGACGGC
TCTGTGGCATTCTCGACTTCTCCAGGATGAGCTTGGCGATCCCCTGAGCGAGGAGGAGAAGAGCCGCA
TTCACCAAGTCCACCTATGGCAAGAGCCTAGCCATCATGACCGAGGCCAGCTCTCCACAGCCGTCATTGA
GAACCCTGAGATGCTCAAGTACCAGCGAAGGCAGCAGCAGCAGCAGCTGGACCAGAAGAGTGTGCGACC
AGGGAGATGGGCTCAGCCACCTCAGTCGCAGGCGTTGTCAACGGGGAGAGTCTTGAAGATATCAGGAAGA
ATCTTTTGAAGAAACAAGTTGAGACTCGGACAGCAGATGGCCGGAGAAGAATCACGCCTCTGTCATAGC
ACAGCTGGACACTGGGGACTTCTCCACGGCATTCTTAAACAGCATCCCCCTCTCGGGCTCCCTGGCGGGC



ACCATGCTCTTCTCATAGCAGTCCACAGCTACTGCCACTGGACTCCAGTACCCCTAACTCCTTCGGCG
 CCTCGAAGCCTTGACAGAGCCTGTGGTGGCTGCCAGTCCAGACCTGCAGGCGATTCTGTCAATAAAGA
 CAGTATGAATGCTACCTCTACTCCTGCTGCATTGTACCTTCTGTGTTAACGACCCCGTCCAAGATCGAA
 CCCATGAAAGCGTTTGACTCCCGGTTACAGAGCGGTCCAAGCCACACCAGGTGCTCCTGCCCTGACCA
 GCATGACTCCGACAGCTGTGAAAGGTTAAAAGAGCAGAACCTTGTGAAAGAGCTGAGGCCCGGAGACCT
 CCTGGAGAGCAGCAGTACAGCGATGAGAAAGTCCCTTTGGCTAAGGCTTCCTACTGTCCAAGCGAAAA
 CTTGAGCTTGAAGTACAGCAGTACAGAAAGAAAGAAAGGGCGGCTCGGAAGGACTCTCGTCTCATGC
 CTGTGTCTGTGTCTCCAGTCTCCAGTGCCTAACCGCAGAGAAGGAGGCCATGTGTCTGTGCACC
 AGCACTTGCAGTGAAGCTGCCAATTCAGCCCCAGAGAGCATTACCCCTCCAGGTCAGCTCCGATCCT
 TCCATGTACATTGAGGTGGAGAATGAAGTGACAGTGGTGGGGGGCGTGAAGCTGAGCCGCTGAAGTGCA
 ACCGGGAAGGGAAGGAGTGGGAGACGGTACTCACCAGCCGGATCCTACTGCTGCGGGCAGCTGTGACGT
 GGTGTGTGTCGCTGTGAAAAAGGATGCTGTGAGTGTCTCCACCTGTGGTGGCGCTCCTCTCTCCC
 ATCCTCCTGCCATCCCGATCTACTTTGCATTGCACAGGCTCCTACGTCATGGCGCTCACCCTGCAG
 CCACACTCTGTCTGGGATGTTACAGACAGGTGGTTGTGGTGAAGAAGAGTCTTACTCTCCATCCT
 GGCAGGAAGTGATATGACGGTATCACAGATCTTGCTGACGAGCATGGAATCCCAGTAATGAACCTGTCC
 GATGGGAAGGCGTACTGCTTAAATCCGTCACCTTCCACATGGAACCTGGTTTCTGACAAGCAGGACTCAC
 TGGCTCAGTGTGCAGACTTAGGAGCAGCTGCCATCCCAGGACGCCATGCTGTGCTCAGGACCGTTAGC
 CATAATCCAGGGCCGACCTCCAACCTCGGAAGGCAGGCTGCCCGGCTTCTCCTGCTCATGTGGT
 CAGCAAGAGACCACCTGGCCTACCTAGAGAACCAGGTGGCAGCAGCACTCACCCTGCAGTCCAGCCAGC
 AGTACCGCCATTGGCTCCTCGTCTACGCACGGTACCTCGTAAACGAAGGGTTGAATACCGACTTCGAGA
 AATATGCAAGGACTTACTGGTCCGGTCTACTACTCCACTGGAAGCCAGTGGGAGTCAACAGTAGTGGGT
 CTGCGGAAGAGGGAGCTGCTGAAGGAGCTGCTACCAGTACATCGGGCAGAACCTCCGATCCAGCGCTCT
 TCACCGAGTGTGAGAACAGCTCGACATCCTGAGGGACAAG

ACGCGTACGCGGGCCGCTCGAGCAGAACTCATCTCAGAAGAGGATCTGGCAGCAAATGATATCCTGGATT
 ACAAGGATGACGACGATAAGGTTAA

Protein Sequence:

>RC208049 representing NM_003325
 Red=Cloning site Green=Tags(s)

MKLLKPTWVNHNGKPIFVSDIHPDGTGFATGGQGQDSGKVVIIWNMSPVLQEDDEKDENIPKMLCQMDNHL
 ACVNCVRSNSQMYLASGDDKLIWVWKRTYIGPSTVFGSSGLANVEQWRCVSLRNHSGDVMVAVAS
 PHDAWLASCSVDNTVVIWNAVKFPEILATLRGHSGLVKGLTWDVPVKYIASQADDRSLKVVWRTLDWQLET
 SITKPFDECGTTHVLRLSWSPDGHYLSAHAMNNSGPTAQIIEREGWKTNMDVFGHRKAVTVVFNPKI
 FKKKQKNGSSAKPSCPYCCAVGSKDRSLSVWLTCLKRPLVVIHELFDKSIIMDISWTLNGLGILVCSMDG
 SVAFLDFSQDELGDPLSEEEKSRIHQSTYGKSLAIMTEAQLSTAVIENPEMLKYQRRQQQQLDQKSAAT
 REMGATS SVAGVNGESLEDIRKNLLKQVETRTADGRRRITPLCIAQLDTGDFSTAFFNSIPLSGSLAG
 TMLSSHSPQLPLDSSTPNSFGASKPCTEPVVAASARPAGDSVNKDSMNATSTPAALSPSVLTPPSKIE
 PMKAFDSRFTERSKATPGAPALTSMTPTAVERLKEQNLVKELRPRDLLESSSDSDEKVPPLAKASSLSKRK
 LELEVETVEKKGKGRPRKDSRLMPVSLSVQSPAALTAEKEAMCLSAPALALKLPISPQRAFTLQVSSDP
 SMYIEVENEVTVVGKLSRLKCNREGKEWETVLSRILTAAGSCDVVCACEKRLSVFSTCGRLLSP
 ILLPSPISTLHCTGSYVMALTAAATLSVWDVHRQVVVVKESLHSLAGSDMTVSQILLTQHGIPTMNL
 DGKAYCFNPSLSTWNLVSDKQDSLACQADFRSSLPSQDAMLCSGPLAIIQGRTSNSGRQAARLFSVPHVV
 QQETTLAYLENQVAAALTLQSSHEYRHLLVYARYLVNEGFEYRLREICKDLLGPVHYSTGSQWESTVVG
 LRKRELLKELLPVIGQNLRFQRLFTECQEQLDILRDK

TRTRPLEQKLISEEDLAANDILDYKDDDDKV

Chromatograms:

https://cdn.origene.com/chromatograms/mk8113_e09.zip

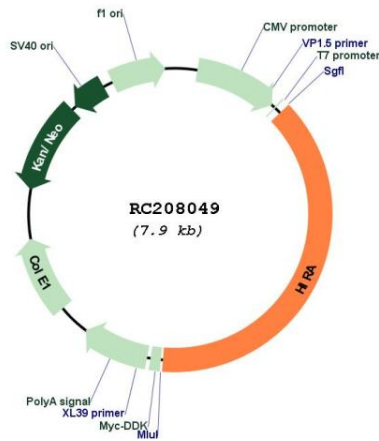
Restriction Sites:

Sgfl-MluI

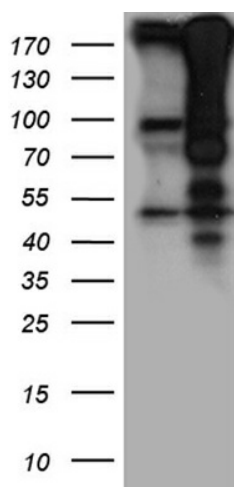
UniProt ID: [P54198](#)
Cytogenetics: 22q11.21
Domains: WD40
Protein Families: Transcription Factors
MW: 111.7 kDa

Gene Summary: This gene encodes a histone chaperone that preferentially places the variant histone H3.3 in nucleosomes. Orthologs of this gene in yeast, flies, and plants are necessary for the formation of transcriptionally silent heterochromatin. This gene plays an important role in the formation of the senescence-associated heterochromatin foci. These foci likely mediate the irreversible cell cycle changes that occur in senescent cells. It is considered the primary candidate gene in some haploinsufficiency syndromes such as DiGeorge syndrome, and insufficient production of the gene may disrupt normal embryonic development. [provided by RefSeq, Jul 2008]

Product images:



Circular map for RC208049



HEK293T cells were transfected with the pCMV6-ENTRY control (Cat# [PS100001], Left lane) or pCMV6-ENTRY HIRA (Cat# RC208049, Right lane) cDNA for 48 hrs and lysed. Equivalent amounts of cell lysates (5 ug per lane) were separated by SDS-PAGE and immunoblotted with anti-HIRA rabbit polyclonal antibody (Cat# [TA890126]).