

Product datasheet for **RC208047**

UBF1 (UBTF) (NM_001076683) Human Tagged ORF Clone

Product data:

Product Type:	Expression Plasmids
Product Name:	UBF1 (UBTF) (NM_001076683) Human Tagged ORF Clone
Tag:	Myc-DDK
Symbol:	UBF1
Synonyms:	CONDBA; NOR-90; UBF; UBF-1; UBF1; UBF2
Mammalian Cell Selection:	Neomycin
Vector:	pCMV6-Entry (PS100001)
E. coli Selection:	Kanamycin (25 ug/mL)



[View online »](#)

ORF Nucleotide Sequence:

>RC208047 representing NM_001076683
 Red=Cloning site Blue=ORF Green=Tags(s)

TTTTGTAATACGACTCACTATAGGGCGGCCGGGAATTCGTCGACTGGATCCGGTACCGAGGAGATCTGCC
 GCC**CGGATCGCC**

ATGAACGGAGAAGCCGACTGCCCCACAGACCTGGAATGGCCGCCCCAAAGGCCAAGACCGTTGGTCCC
 AGGAAGACATGCTGACTTTGCTGGAATGCATGAAGAACAACCTTCCATCCAATGACAGCTCCAAGTTCAA
 AACCAACGAATCACACATGGACTGGGAAAAAGTAGCATTTAAAGACTTTTCTGGAGACATGTGCAAGCTC
 AAATGGGTGGAGATTTCTAATGAGGTGAGGAAGTTCGACATTGACAGAATTGATCCTCGATGCTCAGG
 AACATGTTAAAAATCCTTACAAAGGCCAAAACTCAAGAAACACCCAGACTTCCCAAAGAAGCCCCTGAC
 CCCTTATTTCCGCTTCTTCATGGAGAAGCGGGCAAGTATGCGAACTCCACCCTGAGATGAGCAACCTG
 GACCTAACCAAGATTCTGTCCAAGAAATACAAGGAGCTCCGGAGAAGAAGAAGATGAAATATATTCAGG
 ACTTCCAGAGAGAAAACAGGAGTTCGAGCGAAACCTGGCCCGATTGAGGGAGGATCACCCGACCTAAT
 CCAGAATGCCAAGAAATCGGACATCCAGAGAAGCCAAAACCCCCAGCAGCTGTGGTACACCCACGAG
 AAGAAGGTGTATCTCAAAGTGGCCAGATGAGATCATGAGAGACTATATCCAGAAGCACCCAGAGCTGA
 ACATCAGTGAGGAGGGTATCACCAAGTCCACCCTCACCAAGGCCGAACGCCAGCTCAAGGACAAGTTTGA
 CGGGCGACCCACCAAGCCACCTCCGAACAGCTACTCGCTGTACTGCGCAGAGCTCATGGCCAACATGAAG
 GACGTGCCCAGCAGAGCGCATGGTGTGTGCAGCCAGCAGTGGAAAGTGTGTCCCAGAAGGAGAAGG
 ACGCCTATCACAAGAAGTGTGATCAGAAAAAGAAAGATTACGAGGTGGAGCTGCTCCGTTTCTCGAGAG
 CCTGCCTGAGGAGGAGCAGCAGCGGGTCTTGGGGGAAGAGAAGATGCTGAACATCAACAAGAAGCAGGCC
 ACCAGCCCCGCTCCAAGAAGCCAGCCCAGGAAGGGGGCAAGGGCGCTCCGAGAAGCCAAAGCGGCCCG
 TGTCGGCCATGTTTCATCTTCTCGGAGGAGAAACGGCGGCAGCTGCAGGAGGAGCGGCTGAGCTCTCCGA
 GAGCGAGCTGACCCGCTTGTGGCCGAATGTGGAACGACCTGTCTGAGAAGAAGAAGGCCAAGTACAAG
 GCCCGAGAGGCGGCGCTCAAGGCTCAGTCGAGAGGAAGCCCGGCGGGGAGCGGAGGAACGGGGCAAGC
 TGCCCGAGTCCCCAAAAGAGCTGAGGAGATCTGGCAACAGAGCGTTATCGGCGACTACCTGGCCCGCTT
 CAAGAATGACCGGTGAAGGCCTTGAAGCCATGGAAATGACCTGGAATAACATGGAAAAGAAGGAGAAA
 CTGATGTGGATTAAGAAGGCAGCCGAAGACCAAAAGCGATATGAGAGAGAGCTGAGTGAATGCGGGCAC
 CTCCAGCTGCTACAAATCTTCCAAGAAGATGAAATCCAGGGAGAACCACCAAGAAGCCTCCCATGAACGG
 TTACCAGAAGTTCTCCAGGAGCTGCTGTCCAATGGGGAGCTGAACCACCTGCCGCTGAAGGAGCGCATG
 GTGGAGATCGGCAGTCTGCTGGCAGCGCATCTCCAGAGCCAGAAGGAGCACTACAAAAGCTGGCCGAGG
 AGCAGCAAAAGCAGTACAAGGTGCACCTGGACCTCTGGGTTAAGAGCCTGTCTCCCAGGACCGTGCAGC
 ATATAAGAGTACATCTCCAATAAAGCTAAGAGCATGACCAAGCTGCGAGGCCAAAACCCCAATCCAGC
 CGGACTACTCTGCAGTCCAAGTCGGAGTCCGAGGAGGATGATGAAGAGGATGAGGATGACGAGGACGAGG
 ATGAAGAAGAGGAAGATGATGAGAATGGGGACTCCTCTGAAGTGGCGGCGACTCCTCTGAGTCCAGCAG
 CGAGGACGAGAGCGAGGATGGGGATGAGAATGAAGAGGATGACGAGGACGAAGACGACGAGGATGAC
 GATGAGGATGAAGATAATGAGTCCGAGGGCAGCAGCTCCAGCTCCTCCTCCTCAGGGGACTCCTCAGACT
 CTGACTCCAAC

ACGCGTACGCGGCCGCTCGAGCAGAACTCATCTCAGAAGAGGATCTGGCAGCAAATGATATCCTGGATT
 ACAAGGATGACGACGAT AAGGTTTAA

Protein Sequence: >RC208047 representing NM_001076683
 Red=Cloning site Green=Tags(s)

MNGEADCPTDLEMAAPKGQDRWSQEDMLTLLCEMKNLPSNDSSKFKTTESHMDWEKVAFKDFSGDMCKL
 KWVEISNEVRKFRRTLTELILDAQEHVKNPYKGGKLLKHPDFPKKPLTPYFRFFMEKRKYAKLHPMSNL
 DLTKILSKKYKELPEKKMKYIQDFQREKQEFERNLARFREDHPDLIQNAKKSIDIPEKPKTPQQLWYTHE
 KKVYLKVRPDEIMRDYIQKHPELNI SEEGITKSTLTKAERQLKDKFDGRPTKPPNSYSLYCAELMANMK
 DVPSTERMVLCSQQWLLSQKEKDAYHKKCDQKKDYEVLLRFLESPEEEQQRVLGEEKMLNINKKQA
 TSPASKKPAQEGGKGGSEKPKRPVSAMFIFSEEKRRQLQEERPELSESELTRLLARMWNDLSEKKKAKYK
 AREAALKAQSERKPGGEREERGKLPESPKRAEEIWQQSVIGDYLARFKNDRVKALKAMEMTWNMEKKEK
 LMWIKKAAEDQKRYERELSEMRAPPAATNSSKKMKFQGEPPKPPMNGYQKFSQELLNGLNHLPLKERM
 VEIGSRWQRIQSQKEHYKLLAEEQQKQYKVLHDLVWVSLSPQDRAAYKEYISNKRKSMTKLRGPNPKSS
 RTTLQSKSESEEDDEDEDEDEDEDEEEDDENGDSSEGGDSSESSSESESEDESEDEDEDEDEDEDEDD
 DEDEDNESEGSSSSSSSSGSDSDSN

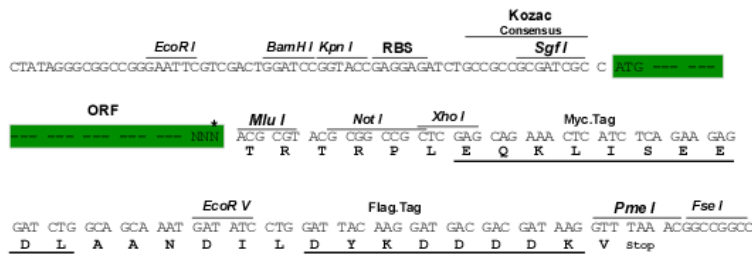
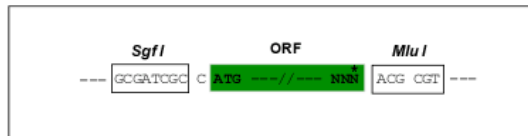
TRTRPLEQKLISEEDLAANDILDYKDDDDKV

Chromatograms: https://cdn.origene.com/chromatograms/mg3429_a02.zip

Restriction Sites: Sgfl-MluI

Cloning Scheme:

Cloning sites used for ORF Shuttling:

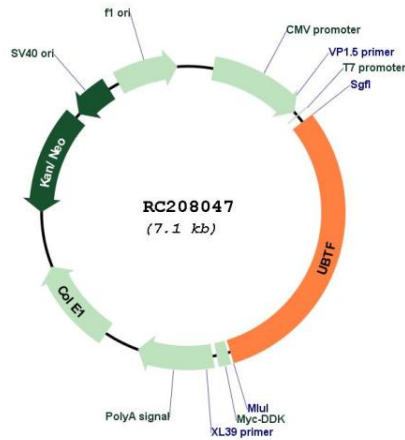


* The last codon before the Stop codon of the ORF

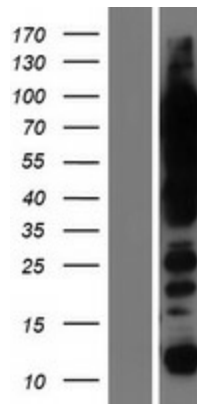
ACCN: NM_001076683

ORF Size: 2181 bp

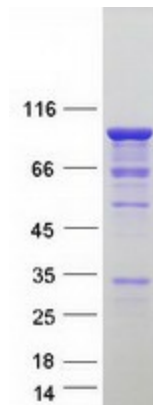
OTI Disclaimer:	<p>Due to the inherent nature of this plasmid, standard methods to replicate additional amounts of DNA in E. coli are highly likely to result in mutations and/or rearrangements. Therefore, OriGene does not guarantee the capability to replicate this plasmid DNA. Additional amounts of DNA can be purchased from OriGene with batch-specific, full-sequence verification at a reduced cost. Please contact our customer care team at custsupport@origene.com or by calling 301.340.3188 option 3 for pricing and delivery.</p> <p>The molecular sequence of this clone aligns with the gene accession number as a point of reference only. However, individual transcript sequences of the same gene can differ through naturally occurring variations (e.g. polymorphisms), each with its own valid existence. This clone is substantially in agreement with the reference, but a complete review of all prevailing variants is recommended prior to use. More info</p>
OTI Annotation:	<p>This clone was engineered to express the complete ORF with an expression tag. Expression varies depending on the nature of the gene.</p>
Components:	<p>The ORF clone is ion-exchange column purified and shipped in a 2D barcoded Matrix tube containing 10ug of transfection-ready, dried plasmid DNA (reconstitute with 100 ul of water).</p>
Reconstitution Method:	<ol style="list-style-type: none">1. Centrifuge at 5,000xg for 5min.2. Carefully open the tube and add 100ul of sterile water to dissolve the DNA.3. Close the tube and incubate for 10 minutes at room temperature.4. Briefly vortex the tube and then do a quick spin (less than 5000xg) to concentrate the liquid at the bottom.5. Store the suspended plasmid at -20°C. The DNA is stable for at least one year from date of shipping when stored at -20°C.
RefSeq:	NM_001076683.2
RefSeq Size:	4635 bp
RefSeq ORF:	2184 bp
Locus ID:	7343
UniProt ID:	P17480
Cytogenetics:	17q21.31
Protein Families:	Transcription Factors
MW:	84.8 kDa
Gene Summary:	<p>This gene encodes a member of the HMG-box DNA-binding protein family. The encoded protein plays a critical role in ribosomal RNA transcription as a key component of the pre-initiation complex, mediating the recruitment of RNA polymerase I to rDNA promoter regions. The encoded protein may also play important roles in chromatin remodeling and pre-rRNA processing, and its activity is regulated by both phosphorylation and acetylation. Alternatively spliced transcript variants encoding multiple isoforms have been observed for this gene. Pseudogenes of this gene are located on the short arm of chromosomes 3, 11 and X and the long arm of chromosome 11. [provided by RefSeq, Aug 2011]</p>

Product images:


Circular map for RC208047



Western blot validation of overexpression lysate (Cat# [LY421361]) using anti-DDK antibody (Cat# [TA50011-100]). Left: Cell lysates from untransfected HEK293T cells; Right: Cell lysates from HEK293T cells transfected with [RC221512] using transfection reagent MegaTran 2.0 (Cat# [TT210002]).



Coomassie blue staining of purified UBTF protein (Cat# [TP308047]). The protein was produced from HEK293T cells transfected with UBTF cDNA clone (Cat# RC208047) using MegaTran 2.0 (Cat# [TT210002]).