

## Product datasheet for **RC208045**

### PPHLN1 (NM\_201438) Human Tagged ORF Clone

#### Product data:

Product Type:	Expression Plasmids
Product Name:	PPHLN1 (NM_201438) Human Tagged ORF Clone
Tag:	Myc-DDK
Symbol:	PPHLN1
Synonyms:	CR; HSPC206; HSPC232
Mammalian Cell Selection:	Neomycin
Vector:	pCMV6-Entry (PS100001)
E. coli Selection:	Kanamycin (25 ug/mL)
ORF Nucleotide Sequence:	>RC208045 ORF sequence Red=Cloning site Blue=ORF Green=Tags(s)

TTTTGTAATACGACTCACTATAGGGCGCCGGGAATTCGTCGACTGGATCCGGTACCGAGGAGATCTGCC  
GCC**CGATCGCC**

ATGGCTTACAGAAGAGACGAAATGTGGTCTGAGGGACGATATGAATATGAAAGAATCCGAGAGAACGAG  
CACCTCCTCGAAGTCATCCAGTGATGAATCTGGTTATAGATGGACAAGAGACGATCATTCTGCAAGCAG  
GCAACCTGAATACAGGGACATGAGAGATGGCTTTAGAAGAAAAGTTTCTACTCTCCATTATGCGAGA  
GAGCGGTCTCCTATAAAAGGGACAATACTTTTTTCAGAGAATCACCTGTTGGCCGAAAGGATTCTCCAC  
ACAGCAGATCTGGTTCAGTGTCTAGTAGCAGAAGCTACTCTCCAGAAAGGAGCAAATCATACTCTTTCCA  
TCAGTCTCAACATAGAAAGTCCGTGCGTCTGGTGCCTCTACAACGGCAGAATGAAGGAAATCCTGAA  
AGAGATAAAGAGAGGCCTGTCCAGTCTTTGAAAACATCAAGAGATACTTACCCTCAAGTGGTTCAGCAG  
TTTCTTCAATCAAAGGTGTAGACAAACCCAGTAGGCTAACTGAAAAGGAACCTTGCTGAGGCTGCAAGCAA  
GTGGGCTGCTGAAAAGCTAGAGAAATCAGATGAAAGTAACTTGCCTGAAATTTCTGAGTATGAGGCGGGA  
TCCACAGCACCATTGTTTACTGACCAGCCAGAGGAACCTGAGTCAAACACAACACATGGGATAGAATTAT  
TTGAAGATAGTCAGCTAACCACTCGCTCTAAAGCAATAGCATCAAAAACCAAGAGATTGAACAGGTGAG  
AGTC

**ACGCGT**ACGCGGCCGCTCGAGCAGAAACTCATCTCAGAAGAGGATCTGGCAGCAAATGATATCCTGGATT  
ACAAGGATGACGACGATAAGGTTTAA



[View online »](#)

**Protein Sequence:** >RC208045 protein sequence  
 Red=Cloning site Green=Tags(s)

MAYRRDEMWSEGRYEYERIPRERAPPRSHPSDESGYRWTRDDHSASRQPEYRDMRDGFRKRSFYSSHYAR  
 ERSPYKRDNTFFRESPVGRKDSPHSRSGSSVSSRSYSYSPERSKSYSFHQSQHRKSVRPGASYKRQNEGNPE  
 RDKERPVSQSLKTSRDTSPSSGSVAVSSSKVLDKPSRLTEKELAEAAASKWAAEKLEKSDENLPEISEYEAG  
 STAPLFTDQPEEPESNTHGIELFEDSQLTTRSKAIAASKTKEIEQVRV

TRTRPLEQKLISEEDLAANDILDYKDDDDKV

**Chromatograms:** [https://cdn.origene.com/chromatograms/mk6342\\_b11.zip](https://cdn.origene.com/chromatograms/mk6342_b11.zip)

**Restriction Sites:** SgfI-MluI

**Cloning Scheme:**

Cloning sites used for ORF Shuttling:



\* The last codon before the Stop codon of the ORF

**ACCN:** NM\_201438

**ORF Size:** 774 bp

**OTI Disclaimer:** The molecular sequence of this clone aligns with the gene accession number as a point of reference only. However, individual transcript sequences of the same gene can differ through naturally occurring variations (e.g. polymorphisms), each with its own valid existence. This clone is substantially in agreement with the reference, but a complete review of all prevailing variants is recommended prior to use. [More info](#)

**OTI Annotation:** This clone was engineered to express the complete ORF with an expression tag. Expression varies depending on the nature of the gene.

**Components:** The ORF clone is ion-exchange column purified and shipped in a 2D barcoded Matrix tube containing 10ug of transfection-ready, dried plasmid DNA (reconstitute with 100 ul of water).

**Reconstitution Method:**

1. Centrifuge at 5,000xg for 5min.
2. Carefully open the tube and add 100ul of sterile water to dissolve the DNA.
3. Close the tube and incubate for 10 minutes at room temperature.
4. Briefly vortex the tube and then do a quick spin (less than 5000xg) to concentrate the liquid at the bottom.
5. Store the suspended plasmid at -20°C. The DNA is stable for at least one year from date of shipping when stored at -20°C.

**RefSeq:** [NM\\_201438.2](#)

**RefSeq Size:** 1338 bp

**RefSeq ORF:** 777 bp

**Locus ID:** 51535

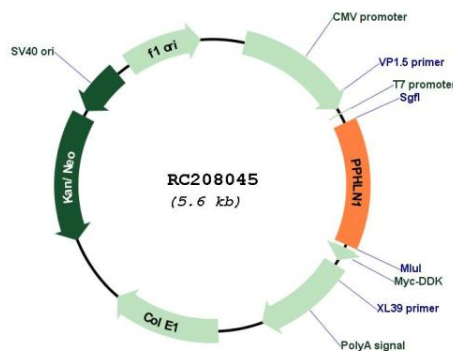
**UniProt ID:** [Q8NEY8](#)

**Cytogenetics:** 12q12

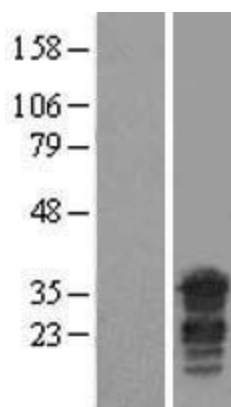
**MW:** 29.8 kDa

**Gene Summary:** The protein encoded by this gene is one of the several proteins that become sequentially incorporated into the cornified cell envelope during the terminal differentiation of keratinocyte at the outer layers of epidermis. This protein interacts with periplakin, which is known as a precursor of the cornified cell envelope. The cellular localization pattern and insolubility of this protein suggest that it may play a role in epithelial differentiation and contribute to epidermal integrity and barrier formation. Multiple alternatively spliced transcript variants encoding distinct isoforms have been observed. [provided by RefSeq, Jul 2008]

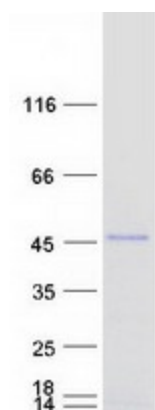
### Product images:



Circular map for RC208045



Western blot validation of overexpression lysate (Cat# [LY404420]) using anti-DDK antibody (Cat# [TA50011-100]). Left: Cell lysates from untransfected HEK293T cells; Right: Cell lysates from HEK293T cells transfected with RC208045 using transfection reagent MegaTran 2.0 (Cat# [TT210002]).



Coomassie blue staining of purified PPHLN1 protein (Cat# [TP308045]). The protein was produced from HEK293T cells transfected with PPHLN1 cDNA clone (Cat# RC208045) using MegaTran 2.0 (Cat# [TT210002]).