

## Product datasheet for **RC208041**

### TCP11L1 (NM\_018393) Human Tagged ORF Clone

#### Product data:

Product Type:	Expression Plasmids
Product Name:	TCP11L1 (NM_018393) Human Tagged ORF Clone
Tag:	Myc-DDK
Symbol:	TCP11L1
Synonyms:	dj85M6.3
Mammalian Cell Selection:	Neomycin
Vector:	pCMV6-Entry (PS100001)
E. coli Selection:	Kanamycin (25 ug/mL)



[View online »](#)

**ORF Nucleotide Sequence:**

>RC208041 ORF sequence  
 Red=Cloning site Blue=ORF Green=Tags(s)

TTTTGTAATACGACTCACTATAGGGCGGCCGGAATTCGTCGACTGGATCCGGTACCGAGGAGATCTGCC  
 GCC**CGCATCGCC**

ATGTCTGAAAACCTTGACAAGTCCAATGTAATGAAGCAGGAAAAACAATCCAATGATTCTGAGGAAG  
 GCCTCGAAGATGCTGTGGAAGGTGCTGATGAAGCCTTACAAAAAGCAATAAAGTCAGACTCCTCCAGCCC  
 CCAAAGAGTGCAGAGACCTCACTCTAGTCTCCTCGCTTTGTGACAGTAGAAGAATTCTAGAGACAGCG  
 AGAGGGCTCACCAACATGGCTCTAGCCCATGAAATTGTAGTAAATGGAGACTTTCAGATTAACCAGTTG  
 AATTACCAGAAAAAGCTTGAAGAAGAGAGTAAAGGAGATTGTACATAAAGCGTTTTGGGATTGCTTGAG  
 TGTGCAGCTAAGTGAAGATCCCCAGCATATGACCATGCTATCAAACCTGTAGGAGAAATCAAAGAGACT  
 CTCTTATCTTTCTGCTGCCTGGTCATACTAGACTGAGAAACCAGATAACAGAAGCTTGGATCTGGATC  
 TGATAAAGCAGGAAGCAGAGAATGGGGCGCTAGACATTTCCAGGCTGGCAGAATTCATTATTGGCATGAT  
 GGGGACTGTGTGCACCTGCTCGAGATGAGGAAGTTAAGAACTAAAGGACATTAAGGAAATAGTGCCC  
 CTTTTAGAGAAATTTTTCTGTGTTGGACCTAATGAAAGTGGACATGGCCAACCTTGTATCAGTAGCA  
 TCAGGCCTCATCTCATGCAGCAGTCAGTTGAATACGAAAGGAAGAAGTTTCAAGAGATTTTGAGAGGGCA  
 ACCAAATTCCTGGACTTTGTCACCCAGTGGCTGGAAGAAGCCTCAGAGGACCTTATGACTCAGAAGTAT  
 AAACACGCCCTGCCAGTGGGGGAATGGCTGCTGGCTCTGGGGACATGCCCAGGCTGAGCCCTGTTGCTG  
 TCCAGAATTACGCTTACCTGAAGCTTCTGAAGTGGGACCCTCCAGAGGCCGTTCCCGAAACAGTTTT  
 AATGGACAGTCTCGCTTCCACGAGCTCCAGTTGACGCTGGAACAACGACCATCCTGGGGCTGTGTTG  
 CTGGTACCTTACGATGGCAGCGCCAGGAATTCAGCCAGGCCGACTTTGCTGAGAACTCAAGATGA  
 TTGTGAAGATTTTGCTAACAGATATGCACCTGCCCTCTCCCTGTGTGGTCTCTCCCTTACCACGGACAAG  
 GGAGAAGGTGTGCTGGAGGTGAGCAGCTGCCTCTCCCTGTGTGGTCTCTCCCTTACCACGGACAAG  
 GAGACCGTGTCAAGGGCCAGATCCAGGCCGTGGCCAGTCCCAGTACCCATTGCGAGGATCATGGAAT  
 CTCGAATCCTGACCTTCTAGAACTACCTTGCCTCGGGTATCAGAAGCCATTGCCACAGTCCCTGG  
 GGGACTCAGTCCAGTTCAGAGAGAGCTGGAGGAAGTTGCTATTAATTTGCTCGCCTGGTCAACTATAAC  
 AAGATGGTCTTCTGTCCCTACTACGATGCAATCCTGAGTAAGATCCTCGTCCGATCC

**ACGCGT**ACGCGGCCGCTCGAGCAGAACTCATCTCAGAAGAGGATCTGGCAGCAATGATATCCTGGATT  
 ACAAGGATGACGACGATAAGGTTTAA

**Protein Sequence:**

>RC208041 protein sequence  
 Red=Cloning site Green=Tags(s)

MSENLDKSNVNEAGKSKSNDSEEGLEDAVEGADEALQKAIKSDSSSPQRVQRPHSSPPRFVTVVEELLETA  
 RGVNMLAHEIVVNGDFQIKPVELPENSLKRVKEIVHKAFWDCLSVQLSEDPAYDHAIKLVGEIKET  
 LLSFLLPGHTRLRNQITEVLDLILKQEAENGALDISRLAEFIIGMMGTLCAPARDEEVKLLKDIKEIVP  
 LFREIFSVLDLMKVDMANFAISSIRPHLMQQSVEYERKKFQEILERQPNSLDFVTQWLEEASEDLMTQKY  
 KHALPVGMAAGSGDMPRLSPVAVQNYAYLKLKWDHLQRPFPETVLMQSRFHQLQLEQLTILGAVL  
 LVTFMAAPGISSQADF AEKLMIVKILLTDMHLPSFHLKDVLTIGEKVCLEVSSLSLCSGSSPFTTDK  
 ETVLKGQIQAVASPDPIRRIMESRILTFLETYLASGHQKPLPTVPGGLSPVQRELEEVAIKFARLVNYN  
 KMFVCPYYDAILSKILVRS

**TRTRPLEQKLI**SEEDLAANDILDYKDDDDKV

**Chromatograms:**

[https://cdn.origene.com/chromatograms/mk6509\\_h03.zip](https://cdn.origene.com/chromatograms/mk6509_h03.zip)

**Restriction Sites:**

Sgfl-Mlul

**Cloning Scheme:**


**ACCN:** NM\_018393

**ORF Size:** 1527 bp

**OTI Disclaimer:** The molecular sequence of this clone aligns with the gene accession number as a point of reference only. However, individual transcript sequences of the same gene can differ through naturally occurring variations (e.g. polymorphisms), each with its own valid existence. This clone is substantially in agreement with the reference, but a complete review of all prevailing variants is recommended prior to use. [More info](#)

**OTI Annotation:** This clone was engineered to express the complete ORF with an expression tag. Expression varies depending on the nature of the gene.

**Components:** The ORF clone is ion-exchange column purified and shipped in a 2D barcoded Matrix tube containing 10ug of transfection-ready, dried plasmid DNA (reconstitute with 100 ul of water).

**Reconstitution Method:**

1. Centrifuge at 5,000xg for 5min.
2. Carefully open the tube and add 100ul of sterile water to dissolve the DNA.
3. Close the tube and incubate for 10 minutes at room temperature.
4. Briefly vortex the tube and then do a quick spin (less than 5000xg) to concentrate the liquid at the bottom.
5. Store the suspended plasmid at -20°C. The DNA is stable for at least one year from date of shipping when stored at -20°C.

**RefSeq:** [NM\\_018393.2](#), [NP\\_060863.2](#)

**RefSeq Size:** 2817 bp

**RefSeq ORF:** 1530 bp

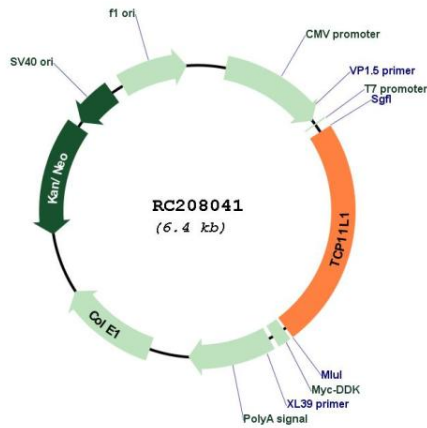
**Locus ID:** 55346

**UniProt ID:** [Q9NUJ3](#)

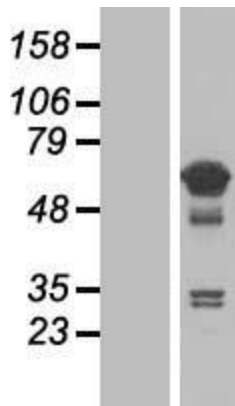
**Cytogenetics:** 11p13

MW: 57.1 kDa

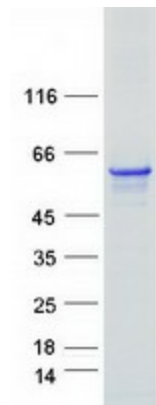
Product images:



Circular map for RC208041



Western blot validation of overexpression lysate (Cat# [LY428932]) using anti-DDK antibody (Cat# [TA50011-100]). Left: Cell lysates from untransfected HEK293T cells; Right: Cell lysates from HEK293T cells transfected with [RC228003] using transfection reagent MegaTran 2.0 (Cat# [TT210002]).



Coomassie blue staining of purified TCP11L1 protein (Cat# [TP308041]). The protein was produced from HEK293T cells transfected with TCP11L1 cDNA clone (Cat# RC208041) using MegaTran 2.0 (Cat# [TT210002]).