

## Product datasheet for **RC208038**

### KLHL7 (NM\_001031710) Human Tagged ORF Clone

#### Product data:

Product Type:	Expression Plasmids
Product Name:	KLHL7 (NM_001031710) Human Tagged ORF Clone
Tag:	Myc-DDK
Symbol:	KLHL7
Synonyms:	CISS3; KLHL6; PERCHING; SBBI26
Mammalian Cell Selection:	Neomycin
Vector:	pCMV6-Entry (PS100001)
E. coli Selection:	Kanamycin (25 ug/mL)



[View online »](#)

**ORF Nucleotide Sequence:**

>RC208038 ORF sequence  
 Red=Cloning site Blue=ORF Green=Tags(s)

TTTTGTAATACGACTCACTATAGGGCGGCCGGAATTCGTCGACTGGATCCGGTACCGAGGAGATCTGCC  
 GCC**CGCATCGCC**

ATGGCAGCCTCTGGGTGGAGAAGAGCAGCAAGAAGAAGACCAGAGAAGAACTTGTCTCGGGAAGAAG  
 CTAATTGTTGGCGGTTTCATGGGCGTCATGAATAACATGCGGAAACAGAAAACGTTGTGTGACGTGAT  
 CCTCATGGTCCAGGAAAGAAAGATACCTGCTCATCGTGTGTTCTTGTCTGCAGCCAGTCATTTTTTAAC  
 TTAATGTTCACTAACAATGCTTGAATCAAAGTCCTTTGAAGTGAAGTCAAAGATGCTGAACCTGATA  
 TTATTGAACAACGGTGGAAATTTGCTTATACTGCTAGAATTTCCGTGAATAGCAACAATGTTGAGTCTTT  
 GTTGGATGCAGCAACCAATATCAGATTGAACCTGTGAAGAAAATGTGTGTTGATTTTTTAAAGAACAA  
 GTTGATGCTTCAAATTGCTTGGTATAAGTGTGCTAGCGGAGTGTCTAGATTGCCTGAATTGAAAGCAA  
 CTGCAGATGACTTTATTCATCAGCACTTTACTGAAGTTTACAAAACCTGATGAATTTCTCAACTGATGT  
 CAAGCGAGTAACACATCTTCTCAACCAGGACACTGACTGTGAGAGCAGAGGATCAGGTTTATGATGCT  
 GCAGTCAGGTGGTTGAAATACGATGAACCTAATGCCAGCCATTTATGGTTGATATCCTTGCTAAAGTCA  
 GGTTTCCTCTTATATCAAAGAATTTCTTAAAGTAAACGGTACAAGCTGAACCACTTATTCAGACAATCC  
 TGAATGCCTTAAGATGGTGATAAGTGGAAATGAGGTACCATCTACTGTCTCCAGAGGACCGAGAAGAACTT  
 GTAGATGGCACAAGACCTAGAAGAAAGAAACATGACTACCGCATAGCCCTATTTGGAGGCTCTCAACCAC  
 AGTCTTGTAGATATTTAAACCAAAGGATTATAGCTGGACAGACATCCGCTGCCCTTTGAAAAACGAAG  
 AGATGCAGCATGCGTGTGTTGGGACAATGTAGTATACATTTTGGGAGGCTCTCAGCTTTCCCAATAAAG  
 CGAATGGACTGCTATAATGTAGTGAAGGATAGCTGGTATTCGAAACTGGGTCTCCGACACCTCGAGACA  
 GCCTTGCATGTGCTGCAGAAGGCAAAATTTATACATCTGGAGTTCAGAAGTAGGAACTCAGCTCT  
 GTATTTATTTGAGTGTATGATACGAGAAGCTGAAAGCTGGCACACAAAGCCAGCATGCTGACCCAGCGC  
 TGCAGCCATGGGATGGTGAAGCAATGCCTAATCTATGTTTGGTGGAGTTTAGGAAACAATGTTT  
 CTGGGAGAGTGCTTAATCCTGTGAAGTTTATGATCCTGCCACAGAAACATGGACTGAGCTGTGTCCAAT  
 GATTGAAGCCAGGAAGAATCATGGGCTGGTATTTGTAAGACAAGATATTTGCTGTGGGTGGTCTCAGAA  
 GGTTTAGGTGGTCTGGACAATGTGAATATTACGATATTAAGTTGAACGAATGGAAGATGGTCTCACCAA  
 TGCCATGGAAGGGTGAACAGTGAATGTGCAGCAGTTGGCTCTATAGTTTATGTCTTGGCTGGTTTTCA  
 GGGTGTGGTTCGATTAGGACACATTCTCGAATATAATACCGAAACAGACAATGGGTGCCAACTCCAAA  
 GTTCGTGCTTTCCAGTCACAAGTTGTTAATTTGTGTTGTCGATACTTGTGGAGCAATGAAGAGACCC  
 TTGAAACA

**ACGCGT**ACGCGGCCGCTCGAGCAGAAACTCATCTCAGAAGAGGATCTGGCAGCAAATGATATCCTGGATT  
 ACAAGGATGACGACGATAAGGTTTAA

**Protein Sequence:**

>RC208038 protein sequence  
 Red=Cloning site Green=Tags(s)

MAASGVEKSSKKKTEKKLAAREEAKLLAGFMGMNMRKQKTLCDVILMVQERKIPAHRVVLAASHFFN  
 LMFTTNMLESKSFELELKDAEPDIEQLVEFAYTARISVNSNNVQSLDDAANQYQIEPVKMCVDFLKEQ  
 VDASNCLGISVLAELDCPELKATADDFIHQHFTEVYKTDFLQLDVKRVTHLLNQDTLTVRAEDQYVDA  
 AVRWLKYDEPNRQPFMVDILAKVRFPLISKNFLSKTVQAEPLIQDNPECLKMVISGMRVHLLSPEDREEL  
 VDGTRPRRKKHRYRIALFGGSQPQSCRYPNPKDYSWTDIRCPFEKRRDAACVFDWNVVYILGGSQLFPIK  
 RMDCYNVVKDSWYSKLGPPTPRDSLAAACAAEGKIYTSGGSEVGNLSALYLFECYDTRTESWHTKPSMLTQR  
 CSHGMVEANGLIYVCGGSLGNNVSGRVLNSCEVYDPATEWTWELCPMIEARKNHGLVFKDKIFAVGGQN  
 GLGGLDNVEYDIKLNWKMVSPMPWKGVTVKCAAVGSIYVVLAGFQGVGRLGHILEYNTETDKWVANSK  
 VRAFPVTSCLICVVDTTCGANEETLET

**TR**TRPLEQKLISEEDLAANDILDYKDDDDKV

**Chromatograms:**

[https://cdn.origene.com/chromatograms/mk6515\\_c12.zip](https://cdn.origene.com/chromatograms/mk6515_c12.zip)

Restriction Sites: SgfI-MluI

Cloning Scheme:



ACCN: NM\_001031710

ORF Size: 1758 bp

OTI Disclaimer: The molecular sequence of this clone aligns with the gene accession number as a point of reference only. However, individual transcript sequences of the same gene can differ through naturally occurring variations (e.g. polymorphisms), each with its own valid existence. This clone is substantially in agreement with the reference, but a complete review of all prevailing variants is recommended prior to use. [More info](#)

OTI Annotation: This clone was engineered to express the complete ORF with an expression tag. Expression varies depending on the nature of the gene.

Components: The ORF clone is ion-exchange column purified and shipped in a 2D barcoded Matrix tube containing 10ug of transfection-ready, dried plasmid DNA (reconstitute with 100 ul of water).

Reconstitution Method:

1. Centrifuge at 5,000xg for 5min.
2. Carefully open the tube and add 100ul of sterile water to dissolve the DNA.
3. Close the tube and incubate for 10 minutes at room temperature.
4. Briefly vortex the tube and then do a quick spin (less than 5000xg) to concentrate the liquid at the bottom.
5. Store the suspended plasmid at -20°C. The DNA is stable for at least one year from date of shipping when stored at -20°C.

RefSeq: [NM\\_001031710.1](#), [NP\\_001026880.1](#)

RefSeq Size: 3195 bp

RefSeq ORF: 1761 bp

Locus ID: 55975

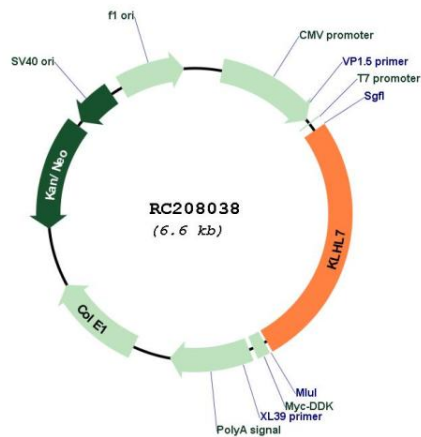
UniProt ID: [Q8IXQ5](#)

Cytogenetics: 7p15.3

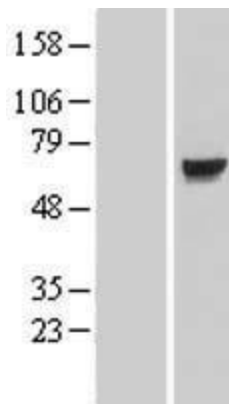
MW: 66 kDa

Gene Summary: This gene encodes a BTB-Kelch-related protein. The encoded protein may be involved in protein degradation. Mutations in this gene have been associated with retinitis pigmentosa 42. [provided by RefSeq, Feb 2010]

### Product images:



Circular map for RC208038



Western blot validation of overexpression lysate (Cat# [LY422161]) using anti-DDK antibody (Cat# [TA50011-100]). Left: Cell lysates from untransfected HEK293T cells; Right: Cell lysates from HEK293T cells transfected with RC208038 using transfection reagent MegaTran 2.0 (Cat# [TT210002]).