

## Product datasheet for **RC208037**

### RNF24 (NM\_007219) Human Tagged ORF Clone

#### Product data:

**Product Type:** Expression Plasmids  
**Product Name:** RNF24 (NM\_007219) Human Tagged ORF Clone  
**Tag:** Myc-DDK  
**Symbol:** RNF24  
**Synonyms:** G1L  
**Mammalian Cell Selection:** Neomycin  
**Vector:** pCMV6-Entry (PS100001)  
**E. coli Selection:** Kanamycin (25 ug/mL)  
**ORF Nucleotide Sequence:** >RC208037 ORF sequence  
Red=Cloning site Blue=ORF Green=Tags(s)

TTTTGTAATACGACTCACTATAGGGCGCCGGGAATTCGTCGACTGGATCCGGTACCGAGGAGATCTGCC  
GCC**CGATCGCC**

ATGAGCTCGGATTTCCACATTACAACCTCAGGATGCCTAATATTGGATTCCAGAATCTGCCTCTCAACA  
TATATATTGGTTTTTGGTACTGCTATATTTGTCTTCATCCTTAGTTTACTCTTCTGTTGCTACTTGAT  
TAGGCTAAGACATCAAGCACACAAAGAATTTATGCCTACAAACAGGTTATATTAAGAGAGAAAGTAAAA  
GAATTGAATTTACATGAGCTCTGTGCAGTGTGCCTAGAAGACTTCAAGCCTCGAGATGAGTTGGGGATT  
GCCCATGTAAGCACGCCCTCCACAGAAAGTGCCTTATTAAGTGGCTGGAGGTTCGTAAAGTGTGCCCT  
GTGCAACATGCCAGTTCTACAGCTGGCCAGTTGCACAGTAAGCAGGACCGTGGACCCCTCAGGGGCC  
CTTCTGGGGCAGAGAACATTGTA

**ACGCGT**ACGCGGCCGCTCGAGCAGAACTCATCTCAGAAGAGGATCTGGCAGCAAATGATATCCTGGATT  
ACAAGGATGACGACGATAAGGTTTAA

**Protein Sequence:** >RC208037 protein sequence  
Red=Cloning site Green=Tags(s)  
MSSDFPHYNFRMPNIGFQNLPLNIYIVVFGTAIFVFI L SLLFCCYLIRLRHQAHKEFYAYKQVILKEKVK  
ELNLHELCAVCLDFKPRDELGICPKHAFHRKCLIKWLEVRKVCPLCNMPVLQLAQLHKSQDRGPPQGP  
LPGAENIV

**TR**TRPLEQKLI SEEDLAANDILDYKDDDDKV

**Chromatograms:** [https://cdn.origene.com/chromatograms/mk6341\\_h07.zip](https://cdn.origene.com/chromatograms/mk6341_h07.zip)



Restriction Sites: SgfI-MluI

Cloning Scheme:



ACCN: NM\_007219

ORF Size: 444 bp

OTI Disclaimer: The molecular sequence of this clone aligns with the gene accession number as a point of reference only. However, individual transcript sequences of the same gene can differ through naturally occurring variations (e.g. polymorphisms), each with its own valid existence. This clone is substantially in agreement with the reference, but a complete review of all prevailing variants is recommended prior to use. [More info](#)

OTI Annotation: This clone was engineered to express the complete ORF with an expression tag. Expression varies depending on the nature of the gene.

Components: The ORF clone is ion-exchange column purified and shipped in a 2D barcoded Matrix tube containing 10ug of transfection-ready, dried plasmid DNA (reconstitute with 100 ul of water).

Reconstitution Method:

1. Centrifuge at 5,000xg for 5min.
2. Carefully open the tube and add 100ul of sterile water to dissolve the DNA.
3. Close the tube and incubate for 10 minutes at room temperature.
4. Briefly vortex the tube and then do a quick spin (less than 5000xg) to concentrate the liquid at the bottom.
5. Store the suspended plasmid at -20°C. The DNA is stable for at least one year from date of shipping when stored at -20°C.

RefSeq: [NM\\_007219.5](#)

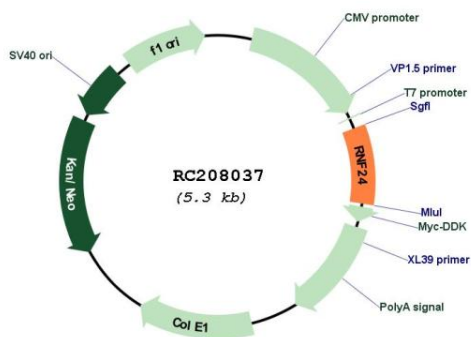
RefSeq Size: 3374 bp

RefSeq ORF: 447 bp

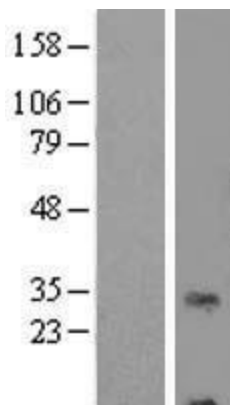
Locus ID: 11237

**UniProt ID:** [Q9Y225](#)  
**Cytogenetics:** 20p13  
**Domains:** RING  
**Protein Families:** Druggable Genome, Transmembrane  
**MW:** 17.2 kDa  
**Gene Summary:** This gene encodes an integral membrane protein that contains a RING-type zinc finger. The encoded protein may interact with multiple transient receptor potential cation channel subfamily C (TRPC) proteins and regulate the trafficking and insertion of these proteins into the plasma membrane. [provided by RefSeq, Mar 2016]

**Product images:**



Circular map for RC208037



Western blot validation of overexpression lysate (Cat# [LY427393]) using anti-DDK antibody (Cat# [TA50011-100]). Left: Cell lysates from untransfected HEK293T cells; Right: Cell lysates from HEK293T cells transfected with [RC225125] using transfection reagent MegaTran 2.0 (Cat# [TT210002]).