

Product datasheet for **RC208022**

L3MBTL1 (NM_015478) Human Tagged ORF Clone

Product data:

Product Type:	Expression Plasmids
Product Name:	L3MBTL1 (NM_015478) Human Tagged ORF Clone
Tag:	Myc-DDK
Symbol:	L3MBTL1
Synonyms:	dj138B7.3; H-L(3)MBT; L3MBTL; ZC2HC3
Mammalian Cell Selection:	Neomycin
Vector:	pCMV6-Entry (PS100001)
E. coli Selection:	Kanamycin (25 ug/mL)



[View online »](#)

**ORF Nucleotide
Sequence:**

>RC208022 representing NM_015478
 Red=Cloning site Blue=ORF Green=Tags(s)

TTTTGTAATACGACTCACTATAGGGCGGCCGGGAATTCGTCGACTGGATCCGGTACCGAGGAGATCTGCC
 GCC**CGGATCGCC**

ATGAGCGGAAGAGAGGGCCATGGCACCGACTCCGAGATGGGTCAAGGACCCGTACGGGAGTCGCAATCCT
 CAGACCCCTCCCGCTCCAGTTCGGATAAAGCGAGTATAAGCCGCTGAACATGGCGGGAGTGGAGCAGCC
 CCCGACCCCGAGCTGCGGCAGGAAGGCGTGACCGAATACGAAGATGGCGGGGCCCGCGGGAGATGGC
 GAGGCGGGCCCCAACAGGCGGAGGACCACCCCAAGATCCTCCAGAAGATCCCAATCAGGACCCCCAG
 AGGATGATAGCACCTGTCAAGTCCAGGAGCGGTGCGGGCCACCAAGCCGCGGGTCCAGATCTTGGTTCCTC
 TAATGATGGTGCCTCAGCTGTTCCAGGAGCGGTGAGTCAAGTGGAGAACTCCTCAGGCTCTACCAGC
 GCTTCTGAGCTCCTCAAACCCATGAAGAAGAGGAAGCGCAGGGAATACCAGAGCCATCAGAGGAGGAGT
 CGGAGCCAGAGGCCATGGAGAAGCAAGAAGAAGAAAGGACCCAGAGGGACAACCCACTGCTAGCACCCC
 AGAGAGTGAAGGAGTGGAGCAGCAGCCAGCTGCAACAGGTGAGAAGAAGGAATGCTGGTCTGGGAGTCC
 TACCTAGAGGAGCAGAAGGCCATTACTGCTCCAGTCCAGCTCTTCCAGGACTCCAGGCAGTCACTCACA
 ACAAGAATGGCTTCAAACCTGGGCATGAAGTTGGAAGGCATTGACCCCTCAACACCCGTCATGTACTTCAT
 CCTCACCGTGGCTGAGGTATGTGGCTATCGCCTACGCCTGCACCTTGTATGGGTATTCTGAGTGCCATGAC
 TTCTGGGTCAATGCCAATCCCTGACATTCACCTGCTGGTGGTTCGAGAAGACGGGCCACAAGCTGC
 AGCCTCCCAAAGGTTACAAGGAGGAGGAGTTCAAGTGGAGCCAGTACCTGCGCAGCACAAGAGCTCAGGC
 TGCCCCAAGCACCTGTTGTGAGCCAGAGCCACAGTCCCCACCCCTGGGCTTCCAGGTGGGCATGAAG
 CTGGAGGCTGTTGACCGCATGAACCCGTCCTTGTCTGCGTGGCCAGTGTGACCGATGTGGTGGACAGCC
 GCTTCTGGTGCACCTTGGACAAGTGGGATGATACTTATGACTACTGGTGTGATCCAGCAGCCCTACAT
 CCACCCAGTGGGCTGGTGCAGAAAGCAAGGAAAGCCCTCACCCCTCCACAAGACTACCCAGACCCCTGAT
 AACTTCTGTTGGGAGAAATATCTGGAAGAACTGGGGCCTCTGCTGTCCCCACCTGGGCCTTCAAGTGC
 GACCCCTCACAGCTTCTGGTCAATATGAAGCTGGAGGCTGTGGACCGCAGGAACCCAGCCCTGATTTCG
 CGTGGCCAGCGTGGAGGATGTGGAGGACCATCGGATAAAGATCCACTTTGATGGCTGGAGTCATGGCTAT
 GATTTCTGGATCGACGCTGACCACCCAGACATCCACCCTGCCGGCTGGTGTCCAAGACAGGACATCCCC
 TGCAGCCTCCTCTCGGACCCAGAGAGCCAGCTCTGCCTCCCCTGGGGGTGTCCCCTCTCAGCTATAG
 GAGCCTGCCCCACACTAGGACCTCAAATACAGCTTTACCACCGGAAGTGGCCACTCCTGGTTGCGAC
 GGCTCTGGCCATGTCACAGGCAAGTTCACAGCTCACCATTGCCTCTCAGGCTGCCACTGGCTGAGAGGA
 ACCAGAGCCGGCTGAAAGCGGAGCTGTCTGACTCGGAGGCCTCAGCCCGCAAGAAGAACCTCTCAGGCTT
 CTCCCCAAGGAAGAAGCCTCGCCATCACGGCCGAATTGGACGCCCTCCGAAGTATCGAAAGATCCGCGAG
 GAAGATTTCCAGACCCCTCACGCCGATGTCTGTCACCAAGTCCCTCTTATGTCAGCCCTGTCCGGCCACC
 CTGACCGCTCACTCTCAGTGTGCTGGGAGCAGCACTGCAAGCTCCTGCCAGGAGTACCGGGCATCTCAGC
 CTCGACAGTCGCCAAGTGGACCATCGATGAGGTCTTCCGGCTTGTTCAGACCCCTGACAGGTTGTGAGGAC
 CAAGCACGCCTCTTCAAAGACGAGGCAAGAATAGTCAGAGTGACCCATGTATCTGGGAAGACTCTAGTCT
 GGACTGTGGCCAGCTTGGGACCTTGTGTGCTCAGATCATCTTCAGGAAGGAAAAGGCATCCTGGAGAC
 AGGAGTCCATTCACTCCTCTGCTCTACCCACTCATTTGCTTGCCTTGTAGCTTTGCCAGTGATAGT
 CAATAT

ACGCGTACGCGGCCGCTCGAGCAGAACTCATCTCAGAAGAGGATCTGGCAGCAAATGATATCCTGGATT
 ACAAGGATGACGACGATAAGGTTTAA

Protein Sequence: >RC208022 representing NM_015478
Red=Cloning site Green=Tags(s)

MRRREGHGTDSEMGQGPVRESQSSDPPALQFRRISEYKPLNMAGVEQPPTPELRQEGVTEYEDGGAPAGDG
EAGPQQAEDHPQNPPEPNQDPPEDDSTCQCQACGPHQAAGPDLGSSNDGCPQLFQERSVIVENS SSGSTS
ASELLKPMKKRRRREYQSPSEEESEPEAMEKQEEGKDPEGQPTASTPESEEWSSSQPATGEKKECWSWES
YLEEQKAITAPVSLFQDSQAVTHNKNQFGLGMKLEGIDPQHPSMYFILTVAEVCGYRLRLHFDGYSECHD
FWVNANSPDIHPAGWFEKTGHKLQPPKGYKEEF SWSQYLRSTRAQAAPKHLFVSQSHSPPLGFQVGMK
LEAVDRMNPSLVCVASVTDVVD SRFLVHFDNWDDTYDYWCDPSSPYIHPVGCQKQKPLTPPQDYDPD
NFCWEKYLEETGASAVPTWAFKVRPPHSFLVNMKLEAVDRRNPALIRVASVEDVEDHRIKIHFDGWSHGY
DFWIDADHPDIHPAGWCSKTGHPLQPPLGPREPSSASPGGCPPLSYRSLPHTRTSKYSFHHRKCPTPGCD
GSGHVTGKFTAHHCLSGCPLAERNQSRKAE LSDSEASARKKNL SGFSPRKKPRHHGRIGRPPKYRKIPQ
EDFQTLTPDVVHQS L FMSALSAHPDRSL SVCWEQHCKLLPGVAGISASTVAKWTIDEVFGFVQTLTGCE
QARLFKDEARIVRVTHVSGKTLVWTVAQLGDLVCS DHLQEGKGIETGVHSL L CSLPTHLLAKLSFASDS
QY

TRTRPLEQKLISEEDLAANDILDYKDDDDKV

Chromatograms: https://cdn.origene.com/chromatograms/mg4432_e07.zip

Restriction Sites: Sgfl-Mlul

Cloning Scheme:


ACCN: NM_015478

ORF Size: 2316 bp

OTI Disclaimer: The molecular sequence of this clone aligns with the gene accession number as a point of reference only. However, individual transcript sequences of the same gene can differ through naturally occurring variations (e.g. polymorphisms), each with its own valid existence. This clone is substantially in agreement with the reference, but a complete review of all prevailing variants is recommended prior to use. [More info](#)

OTI Annotation: This clone was engineered to express the complete ORF with an expression tag. Expression varies depending on the nature of the gene.

Components: The ORF clone is ion-exchange column purified and shipped in a 2D barcoded Matrix tube containing 10ug of transfection-ready, dried plasmid DNA (reconstitute with 100 ul of water).

Reconstitution Method:

1. Centrifuge at 5,000xg for 5min.
2. Carefully open the tube and add 100ul of sterile water to dissolve the DNA.
3. Close the tube and incubate for 10 minutes at room temperature.
4. Briefly vortex the tube and then do a quick spin (less than 5000xg) to concentrate the liquid at the bottom.
5. Store the suspended plasmid at -20°C. The DNA is stable for at least one year from date of shipping when stored at -20°C.

RefSeq: [NM_015478.7](#)

RefSeq Size: 3228 bp

RefSeq ORF: 2319 bp

Locus ID: 26013

UniProt ID: [Q9Y468](#)

Cytogenetics: 20q13.12

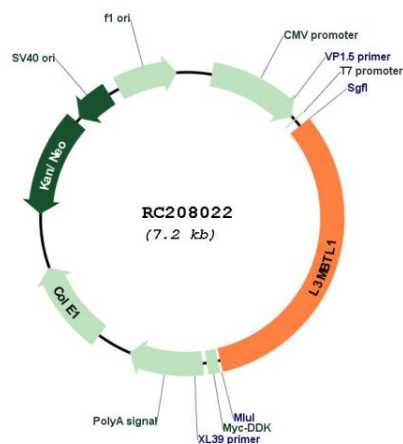
Domains: zf-C2HC, MBT

Protein Families: Transcription Factors

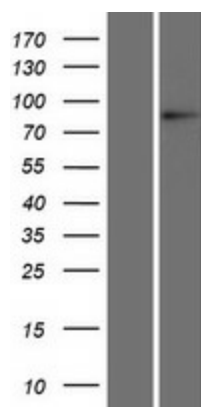
MW: 85.7 kDa

Gene Summary: This gene represents a polycomb group gene. The encoded protein functions to regulate gene activity, likely via chromatin modification. The encoded protein may also be necessary for mitosis. Alternatively spliced transcript variants encoding different isoforms have been identified.[provided by RefSeq, Sep 2010]

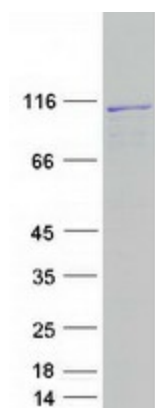
Product images:



Circular map for RC208022



Western blot validation of overexpression lysate (Cat# [LY414530]) using anti-DDK antibody (Cat# [TA50011-100]). Left: Cell lysates from untransfected HEK293T cells; Right: Cell lysates from HEK293T cells transfected with RC208022 using transfection reagent MegaTran 2.0 (Cat# [TT210002]).



Coomassie blue staining of purified L3MBTL1 protein (Cat# [TP308022]). The protein was produced from HEK293T cells transfected with L3MBTL1 cDNA clone (Cat# RC208022) using MegaTran 2.0 (Cat# [TT210002]).