

Product datasheet for **RC208019**

VPS4B (NM_004869) Human Tagged ORF Clone

Product data:

Product Type:	Expression Plasmids
Product Name:	VPS4B (NM_004869) Human Tagged ORF Clone
Tag:	Myc-DDK
Symbol:	VPS4B
Synonyms:	MIG1; SKD1; SKD1B; VPS4-2
Mammalian Cell Selection:	Neomycin
Vector:	pCMV6-Entry (PS100001)
E. coli Selection:	Kanamycin (25 ug/mL)



[View online »](#)

ORF Nucleotide Sequence:

>RC208019 ORF sequence
 Red=Cloning site Blue=ORF Green=Tags(s)

TTTTGTAATACGACTCACTATAGGGCGGCCGGGAATTCGTGACTGGATCCGGTACCGAGGAGATCTGCC
 GCC**CGCATCGCC**

ATGTCATCCACTTCGCCAACCTCCAGAAAGCGATAGATCTGGCTAGCAAAGCAGCGCAAGAAGACAAGG
 CTGGGAACACGAAGAAGCCCTTCAGCTCTATCAGCATGCTGTGAGTATTTTCTTCATGTCGTTAAATA
 TGAAGCACAGGGTGATAAAGCCAAGCAAAGTATCAGGGCAAAGTGTACAGAATATCTTGATAGAGCAGAA
 AAATAAAGGAGTACCTGAAAAATAAAGAGAAAAAAGCACAGAAGCCAGTAAAGAAGGACAGCCGAGTC
 CAGCAGATGAGAAGGGGAATGACAGTGTGGGGAAGGAGAATCTGATGATCCTGAAAAAAGAACTACA
 GAATCAACTTCAAGGTGCCATTGTTATAGAACGACCAAATGTGAAATGGAGTGACGTTGCTGGACTTGAA
 GGAGCCAAAGAAGCACTGAAAGAGGCTGTGATACTGCCTATTAATTTTCTCATCTTTTACAGGCAAGA
 GAACACCTTGAGGGGAATCCTATTATTTGGGCCGCTGGAACAGGAAAGTCTACTTAGCCAAAGCTGT
 AGCAACAGAAGCCAACAACCTCAACATTTTTTCAATATCTTCTCTGATCTTGTCTAAGTGGCTAGGT
 GAAAGTAAAACTGGTTAAGAATTTATCCAACCTTGCCAGAGAGAAAGCCCTCCATTATCTTCATTG
 ATGAAATTGATTCTCTGTGGTTCAAGAAGTGAAGTGAAGTGAAGCCGCACGTAGAATTAAGACGGA
 GTTCTAGTGCAATGCAAGGGTTGGTGTAGACAATGATGGAATTTGGTTCTGGGAGCTACAAATATA
 CCCTGGTTCTGGATTCTGCCATTAGGCGAAGATTTGAGAAACGAATTTATATCCCTTGCCGGAACCCC
 ATGCCCGAGCAGCAATGTTAAACTGCACCTAGGGACCACTCAGAACAGTCTCACGGAAGCAGACTTTTCG
 GGAAGTGGGAGGAAAACAGATGGTTATTCAGGGGAGATATAAGTATCATTGTACGTGATGCCCTATG
 CAGCCTGTAGGAAAGTACAGTCACTACTCATTTTAAAAAGGTTTCGCGGACCTTCCCGAGCTGATCCTA
 ACCATCTTGTAGATGATCTGCTAACACCTTGCTCTCCAGGTGACCCTGGTCCATTGAAATGACATGGAT
 GGATGTCCTGGAGATAAATTTTGGAGCCAGTTGTTTCCATGTCGGATATGTTGCGGTCACTATCTAAC
 ACAAACCTACAGTCAATGAACATGACTTGTGAAATTAAGAAGTTTACAGAAGATTTTGGTCAAGAAG
 GC

ACGCGTACGCGGCCGCTCGAGCAGAAACTCATCTCAGAAGAGGATCTGGCAGCAAATGATATCCTGGATT
 ACAAGGATGACGACGATAAGGTTTAA

Protein Sequence:

>RC208019 protein sequence
 Red=Cloning site Green=Tags(s)

MSSTSPNLQKAIDLASKAAQEDKAGNYEALQLYQHAVQYFLHVVKYE AQGDKAKQSIRAKCTEYLDRAE
 KLKEYLKNKEKKAQKPVKEGQPSPADEKGNDSGEGESDDPEKKKLQNQLQGAIIVERPNNKWSVAGLE
 GAKEALKEAVILPIKPHLFTGKRTPWRGILLFGPPGTGKSYLAKAVATEANNSTFFSISSDLVSKWLG
 ESEKLVKNLFQLARENKPSIIFIDEIDSLCGSRSENESEAARRIKTEFLVQMGGVGDNDGILVLGATNI
 PWVLDIAIRRRFEKRIYIPLPEPHARAAMFKLHLGTTQNSLLEADFRELGRKTDGYSADISIIIVRDALM
 QPVRKVSATHFKKVRGSPRADPNHLVDDLLTPCSPGDPGAIEMTWMDVPGDKLLEPVVMSDMLRSLSN
 TKPTVNEHDLLKLFKFTEDFGQEG

TRTRPLEQKLISEEDLAANDILDYKDDDDKV

Chromatograms:

https://cdn.origene.com/chromatograms/mk6088_g02.zip

Restriction Sites:

Sgfl-MluI

Cloning Scheme:


ACCN: NM_004869

ORF Size: 1332 bp

OTI Disclaimer: The molecular sequence of this clone aligns with the gene accession number as a point of reference only. However, individual transcript sequences of the same gene can differ through naturally occurring variations (e.g. polymorphisms), each with its own valid existence. This clone is substantially in agreement with the reference, but a complete review of all prevailing variants is recommended prior to use. [More info](#)

OTI Annotation: This clone was engineered to express the complete ORF with an expression tag. Expression varies depending on the nature of the gene.

Components: The ORF clone is ion-exchange column purified and shipped in a 2D barcoded Matrix tube containing 10ug of transfection-ready, dried plasmid DNA (reconstitute with 100 ul of water).

- Reconstitution Method:**
1. Centrifuge at 5,000xg for 5min.
 2. Carefully open the tube and add 100ul of sterile water to dissolve the DNA.
 3. Close the tube and incubate for 10 minutes at room temperature.
 4. Briefly vortex the tube and then do a quick spin (less than 5000xg) to concentrate the liquid at the bottom.
 5. Store the suspended plasmid at -20°C. The DNA is stable for at least one year from date of shipping when stored at -20°C.

RefSeq: [NM_004869.4](#)

RefSeq Size: 3396 bp

RefSeq ORF: 1335 bp

Locus ID: 9525

UniProt ID: [O75351](#)

Cytogenetics: 18q21.33

Domains: AAA, AAA, MIT

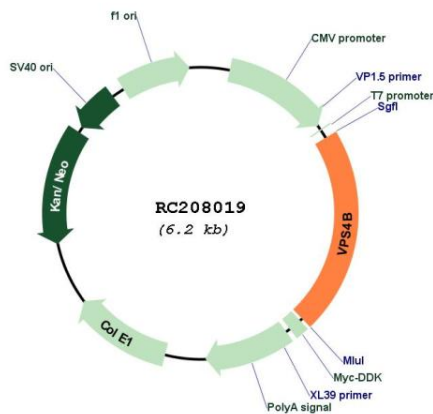
Protein Families: Transcription Factors

Protein Pathways: Endocytosis

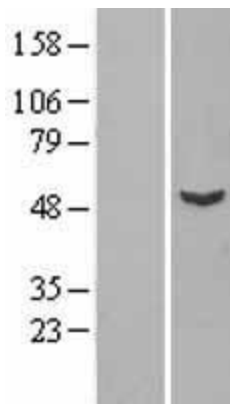
MW: 49.3 kDa

Gene Summary: The protein encoded by this gene is a member of the AAA protein family (ATPases associated with diverse cellular activities), and is the homolog of the yeast Vps4 protein. In humans, two paralogs of the yeast protein have been identified. The former share a high degree of aa sequence similarity with each other, and also with yeast Vps4 and mouse Skd1 proteins. Mouse Skd1 (suppressor of K⁺ transport defect 1) has been shown to be a yeast Vps4 ortholog. Functional studies indicate that both human paralogs associate with the endosomal compartments, and are involved in intracellular protein trafficking, similar to Vps4 protein in yeast. The gene encoding this paralog has been mapped to chromosome 18; the gene for the other resides on chromosome 16. [provided by RefSeq, Jul 2008]

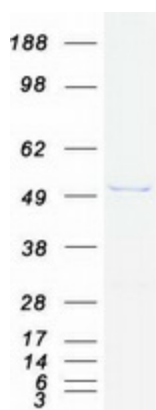
Product images:



Circular map for RC208019



Western blot validation of overexpression lysate (Cat# [LY401522]) using anti-DDK antibody (Cat# [TA50011-100]). Left: Cell lysates from untransfected HEK293T cells; Right: Cell lysates from HEK293T cells transfected with RC208019 using transfection reagent MegaTran 2.0 (Cat# [TT210002]).



Coomassie blue staining of purified VPS4B protein (Cat# [TP308019]). The protein was produced from HEK293T cells transfected with VPS4B cDNA clone (Cat# RC208019) using MegaTran 2.0 (Cat# [TT210002]).