

Product datasheet for **RC208018**

UPF1 (NM_002911) Human Tagged ORF Clone

Product data:

Product Type:	Expression Plasmids
Product Name:	UPF1 (NM_002911) Human Tagged ORF Clone
Tag:	Myc-DDK
Symbol:	UPF1
Synonyms:	HUPF1; NORF1; pNORF1; RENT1; smg-2; UTF
Mammalian Cell Selection:	Neomycin
Vector:	pCMV6-Entry (PS100001)
E. coli Selection:	Kanamycin (25 ug/mL)
ORF Nucleotide Sequence:	>RC208018 ORF sequence Red=Cloning site Blue=ORF Green=Tags(s)

TTTTGTAATACGACTCACTATAGGGCGGCCGGAATTCGTCGACTGGATCCGGTACCGAGGAGATCTGCC
GCC**CGATCGCC**

ATGAGCGTGGAGGCGTACGGGCCAGCTCGCAGACTCTCACTTTCTGGACACGGAGGAGCCGAGCTGC
TTGGCGCCGACACACAGGGCTCCGAGTTCGAGTTCACCGACTTTACTCTTCTAGCCAGACGCAGACGCC
CCCCGGCGGCCCGGGCGGCCGGTGGCGGCGGGAGGCCCGGGCGGCGGGCGGGCGCTGCC
GCGGGACAGCTCGACGCGCAGGTTGGGCCGAAGGCATCTGCAGAACGGGCTGTGGACAGAGTGTAG
CCAAGACCAGCCAGTTGTTGGCTGAGTTGAACTTCGAGGAAGATGAAGAAGACACCTATTACACGAAGGA
CCTCCCCATACACGCCTGCAGTTACTGTGGAATACACGATCCTGCCTGCGTGGTTTACTGTAAATACCAGC
AAGAAGTGGTTCTGCAACGGACGTGAAATACTTCTGGCAGCCACATTGTAATCACCTTGTGAGGGCAA
AATGCAAAGAGGTGACCTGCACAAGGACGGGCCCTGGGGGAGACAGTCTGGAGTGCTACAATGCGG
CTGTGCAACGCTTCTCTCCTCGGCTTCATCCCGCCAAAGCTGACTCAGTGGTGGTGTCTGTGCAGG
CAGCCCTGTGCCAGCCAGAGCAGCCTCAAGGACATCAACTGGGACAGCTCGCAGTGGCAGCCGCTGATCC
AGGACCGCTGCTTCTGTCTGGCTGGTCAAGATCCCCCTCGAGCAGGAGCAGCTGCGGGACGCCAGAT
CACGGCACAGCAGATCAACAAGCTGGAGGAGCTGTGGAAGGAAAACCTTCTGCCACGCTGGAGGACCTG
GAGAAGCCGGGGTGGACGAGGAGCCGACATGTCCTCCTGCGGTACGAGGACGCTACCAGTACCAG
ACATATTCGGGCCCTGGTCAAGCTGGAGCCGACTACGACAAGAAGCTGAAGGAGTCCCAGACTCAAGA
TAACATCACTGTGAGTGGACCTGGGCCTTAACAAGAAGAGAATCGCCTACTTCACTTTGCCAAGACT
GACTCTGACATGCGGCTCATGCAGGGGATGAGATATGCCTGCGGTACAAAGGGGACCTTGCGCCCTGT
GGAAAGGGATCGGCCACGTCATCAAGGTCCTGATAATTATGGCGATGAGATCGCCATTGAGCTGCGGAG
CAGCGTGGGTGCACCTGTGGAGGTGACTCACAACCTCCAGGTGGATTTTGTGGAAGTCGACCTCCTTT
GACAGGATGCAGAGCGCATTGAAAACGTTTGGCGTGGATGAGACCTCGGTGTCTGGCTACATCTACCACA
AGCTGTTGGGCCACGAGGTGGAGGACGTAATCATCAAGTCCAGCTGCCAAGCGCTTACGGCGCAGGG
CCTCCCCGACCTCAACCACTCCAGGTTATGCGGTGAAGACTGTCTGCAAAGACCACTGAGCCTGATC



CAGGGCCCGCCAGGCACGGGGAAGACGGTGACGTCGGCCACCATCGTCTACCACCTGGCCCGCAAGGCA
 ACGGGCCGGTGTGGTGTGTGCTCCGAGCAACATCGCCGTGGACCAGCTAACGGAGAAGATCCACCAGAC
 GGGGCTAAAGGTCGTGCGCCTCTGCGCCAAGAGCCGTGAGGCCATCGACTCCCCGGTGTCTTTTCTGGCC
 CTGCACAACCAGATCAGGAACATGGACAGCATGCCTGAGCTGCAGAAGCTGCAGCAGCTGAAAGACGAGA
 CTGGGGAGCTGTCGTCTGCCGACGAGAAGCGGTACCGGGCCTTGAAGCGCACCCGAGAGAGAGAGCTGT
 GATGAACGCAGATGTCATCTGCTGCACATGTGTGGGCGCCGTTGACCCGAGGCTGGCCAAGATGCAGTTC
 CGCTCATTTTTAATCGACGAAAGCACACAGGCCACCGAGCCGAGTGCATGGTTCCTGGTCTCTGGGG
 CCAAGCAGCTGATCCTTGTAGGCGACCACTGCCAGCTGGGCCAGTGGTGTGTGCAAGAAGGCGGCCAA
 GGCCGGGCTGTCACAGTCGCTCTTCGAGCGCCTGGTGGTGTGGGCATCCGGCCATCCGCTGCAGGTC
 CAGTACCGGATGCACCCTGCACTCAGCGCCTTCCCATCCAACATCTTCTACGAGGGCTCCCTCCAGAATG
 GTGCTACTGCAGCGGATCGTGTGAAGAAGGATTTGACTTCCAGTGGCCCAACCCGATAAACCGATGTT
 CTTCTACGTGACCCAGGGCCAAGAGGAGATTGCCAGCTCGGGCACCTCTACCTGAACAGGACCGAGGCT
 GCGAACGTGGAGAAGATCACCACGAAGTTGCTGAAGGCAGGCGCCAAGCCGACCAGATTGGCATCATCA
 CGCCCTACGAGGGCCAGCGCTCTACCTGGTGCAGTACATGCAGTTCAGCGGCTCCCTGCACACCAAGCT
 CTACCAGGAGGTGGAGATCGCCAGTGTGGACGCCTTTCAGGGACGCGAGAAGGACTTCATCATCCTGTCC
 TGTGTGCCGGCCAACGAGCACCAGGCATTGGCTTTTTAATGACCCAGCGCTGAACGTGGCCCTGA
 CCAGAGCAAGGTATGGCGTCATATTGTGGCAACCCGAAGGCACTATCAAAAGCAGCCGCTCTGGAACCA
 CCTGCTGAACTACTATAAGGAGCAGAAGGTGCTGGTGGAGGGGCCGCTCAACAACCTGCGTGAAGCCTC
 ATGCAGTTCAGCAAGCCACGGAAGCTGGTCAACACTATCAACCCGGGAGCCCGCTTCATGACCACAGCCA
 TGTATGATGCCCGGGAGGCCATCATCCCAGGCTCCGCTATGATCGGAGCAGCCAGGGCCCGGCTCCAG
 CATGTACTTCCAGACCCATGACCAGATTGGCATGATCAGTCCCGCCCTAGCCACGTGGCTGCCATGAAC
 ATTCCCATCCCCTTCAACTGGTTCATGCCACCCATGCCACCGCTGGCTATTTGGACAAGCCAAAGGGC
 CTGCTGCAGGGGAGGCACCCGAAAGGCAAGACTGGTGTGGGGGAGCCGAGAAGAAGCCGTTTGGGCT
 TCCTGGACCCAGCCAGACTAACCTCCCCAACAGCCAAGCCAGCCAGGATGTGGCGTCACAGCCCTTCTCT
 CAGGGCGCCCTGACGCAGGGCTACATCTCCATGAGCCAGCCTTCCAGATGAGCCAGCCCGGCTCTCCC
 AGCCGGAGCTGTCCAGGACAGTTACCTTGGTGCAGGTTTAAATCACAAATCGACGTGGCGCTCTCACA
 GGACTCCACGTACCAGGGAGAGCGGGCTTACCAGCATGGCGGGGTGACGGGGTGTCCCAGTAT

ACGCGTACGCGGGCCGCTCGAGCAGAACTCATCTCAGAAGAGGATCTGGCAGCAATGATATCCTGGATT
 ACAAGGATGACGACGATAAGGTTTAA

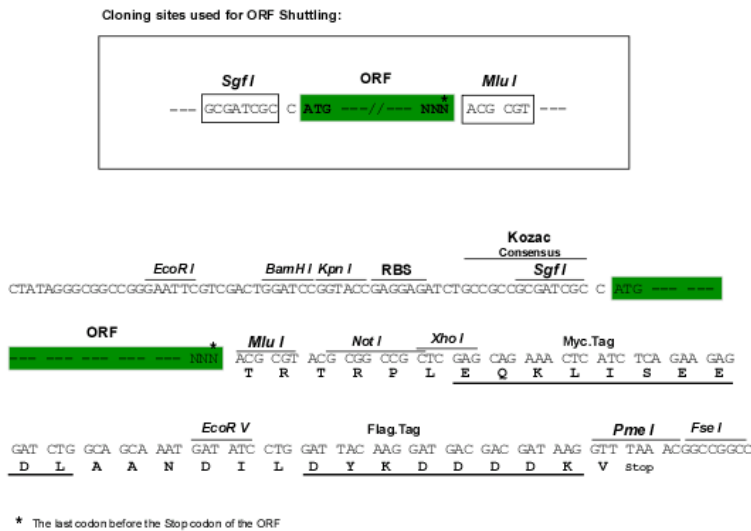
Protein Sequence:

>RC208018 protein sequence
 Red=Cloning site Green=Tags(s)

MSVEAYGPSSQTLTFLDTEEAELLGADTQGSEFEFTDFTLPSQTQTPPGGPGGGGAGGPGGAGAGAA
 AGQLDAQVGPPEGILQNGAVDDSVAKTSQLLAELNFEDEEDTYTKDLP IHACSYCGIHPACVVCNTS
 KKWFENGRGNTSGSHIVNHLVRAKCKEVTLHKDGPLGETVLECYNCGCRNVFLLGFIPAKADSVVLLCR
 QPCASQSSLLKINWDSSQWQPLIQDRCFLSWLVKIPSEQEQLRARQITAQQINKLEELWKENPSATLEDL
 EKPGVDEEPQHVLRLRYEDAYQYQNI FGPLVKLEADYDKKLKESQTQDNITVRWDLGLNKKRIAYFTLPKT
 DSDMRLMQGDEICLRYKGD LAPLWKGIGHVIVKVPDNYGDEIAIELRSSV GAPVEVTHNFQVDFVWKSTF
 DRMQSALKTFVDETSVSGYIYHKL LGHEVEDVIKQQLPKRFTAQGLPDLNHSQVYAVKTVLQRPLSLI
 QGPPGTGKTVTSATIVYHLARQNGPVLVCAPSNI AVDQLTEKIHQTGLKVVRLCAKSREAI DSPVSFLA
 LHNQIRNMDSMP ELQKLQQLKDETGELSSADEKRYRALKRTAERELLMNADVICCTCVGADPRLAKMQF
 RSILIDESTQATEPECMVPVVLGAKQLILVGDHCQLGPVVMCKKAAGLSQSLFERLVVLGIRP IRLQV
 QYRMHPALSAFPSNIFYEGSLQNGVTAADR VKKGFDFQWPQPKPMFFYVTQGE EIASVDAFQGREKDFIILS
 CVRANEHQIGFLNDPRRLNVALTRARYGVII VGNPKALSKQPLWNHLLNYYKEQKVLVEGPLNLRSL
 MQFSKPRKLVNTINPGARFMTTAMYDAREAIIPGSVYDRSSQGRPSSMYFQTHDQIGMISAGPSHVAAMN
 IPIPFNLVMPMPPPGYFGANGPAAGRGT PKGKTGRGGRQKNRFG LPPGPSQTNLPNSQASQDVASQPF S
 QGALTQGYISMSQPSQMSQPGLSQPELSQDSYLGDEFKSQIDVALSQDSTYQGERAYQHGGVTGLSQY

TRTRPLEQKLISEEDLAANDILDYKDDDDKV

Chromatograms: https://cdn.origene.com/chromatograms/mk6835_g01.zip
 Restriction Sites: SgfI-MluI
 Cloning Scheme:



ACCN: NM_002911
 ORF Size: 3354 bp

OTI Disclaimer: Due to the inherent nature of this plasmid, standard methods to replicate additional amounts of DNA in E. coli are highly likely to result in mutations and/or rearrangements. Therefore, OriGene does not guarantee the capability to replicate this plasmid DNA. Additional amounts of DNA can be purchased from OriGene with batch-specific, full-sequence verification at a reduced cost. Please contact our customer care team at custsupport@origene.com or by calling 301.340.3188 option 3 for pricing and delivery.

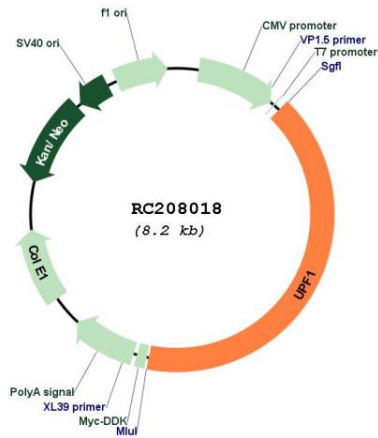
The molecular sequence of this clone aligns with the gene accession number as a point of reference only. However, individual transcript sequences of the same gene can differ through naturally occurring variations (e.g. polymorphisms), each with its own valid existence. This clone is substantially in agreement with the reference, but a complete review of all prevailing variants is recommended prior to use. [More info](#)

OTI Annotation: This clone was engineered to express the complete ORF with an expression tag. Expression varies depending on the nature of the gene.

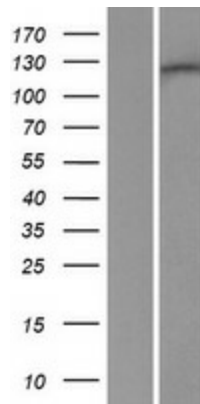
Components: The ORF clone is ion-exchange column purified and shipped in a 2D barcoded Matrix tube containing 10ug of transfection-ready, dried plasmid DNA (reconstitute with 100 ul of water).

Reconstitution Method:	<ol style="list-style-type: none">1. Centrifuge at 5,000xg for 5min.2. Carefully open the tube and add 100ul of sterile water to dissolve the DNA.3. Close the tube and incubate for 10 minutes at room temperature.4. Briefly vortex the tube and then do a quick spin (less than 5000xg) to concentrate the liquid at the bottom.5. Store the suspended plasmid at -20°C. The DNA is stable for at least one year from date of shipping when stored at -20°C.
Note:	Plasmids are not sterile. For experiments where strict sterility is required, filtration with 0.22um filter is required.
RefSeq:	<u>NM_002911.4</u>
RefSeq Size:	5360 bp
RefSeq ORF:	3357 bp
Locus ID:	5976
UniProt ID:	<u>Q92900</u>
Cytogenetics:	19p13.11
Protein Families:	Druggable Genome
MW:	123 kDa
Gene Summary:	<p>This gene encodes a protein that is part of a post-splicing multiprotein complex involved in both mRNA nuclear export and mRNA surveillance. mRNA surveillance detects exported mRNAs with truncated open reading frames and initiates nonsense-mediated mRNA decay (NMD). When translation ends upstream from the last exon-exon junction, this triggers NMD to degrade mRNAs containing premature stop codons. This protein is located only in the cytoplasm. When translation ends, it interacts with the protein that is a functional homolog of yeast Upf2p to trigger mRNA decapping. Use of multiple polyadenylation sites has been noted for this gene. Alternative splicing results in multiple transcript variants. [provided by RefSeq, Jul 2014]</p>

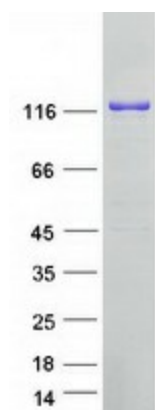
Product images:



Circular map for RC208018



Western blot validation of overexpression lysate (Cat# [LY419014]) using anti-DDK antibody (Cat# [TA50011-100]). Left: Cell lysates from untransfected HEK293T cells; Right: Cell lysates from HEK293T cells transfected with RC208018 using transfection reagent MegaTran 2.0 (Cat# [TT210002]).



Coomassie blue staining of purified UPF1 protein (Cat# [TP308018]). The protein was produced from HEK293T cells transfected with UPF1 cDNA clone (Cat# RC208018) using MegaTran 2.0 (Cat# [TT210002]).