

Product datasheet for **RC208016**

TCTN1 (NM_024549) Human Tagged ORF Clone

Product data:

Product Type:	Expression Plasmids
Product Name:	TCTN1 (NM_024549) Human Tagged ORF Clone
Tag:	Myc-DDK
Symbol:	TCTN1
Synonyms:	JBTS13; TECT1
Mammalian Cell Selection:	Neomycin
Vector:	pCMV6-Entry (PS100001)
E. coli Selection:	Kanamycin (25 ug/mL)



[View online »](#)

ORF Nucleotide Sequence:

>RC208016 ORF sequence
 Red=Cloning site Blue=ORF Green=Tags(s)

TTTTGTAATACGACTCACTATAGGGCGGCCGGAATTCGTCGACTGGATCCGGTACCGAGGAGATCTGCC
 GCC**CGGATCGCC**

ATGAGGCCGCGAGGTCTCCCGCCGCTCCTGGTGGTGTCTCTGGGTGCTGGCCCTCCGTGAGCGCCAGAC
 CCGATGCCACCCCGCGGTGACGACAGAGGGCCTCAACTCCACCGAGGCAGCCCTGGCCACCTTCGGAAC
 TTTCCCGTCGACCAGGCCCCCGGGACTCCAGGGCTCCAGGGCCCTCCTCCGGCCCCAGGCCTACCCCA
 GTCACGGACGTTGCTGTTCTCTGTGTGTGACTTATCCCGACACAGTGTGACATCAACTGCTGTGTG
 ATCCCGACTGCAGCTCCGTGGATTTTCAGTGTCTTTCTGCCTGCTCAGTTCAGTTGTACGGGCGACAG
 CCAGTTTTGTAGTCAAAAAGCAGTCATCTATTCATTGAATTTACAGCAAACCCACCTCAAAGAGTATTT
 GAATTGTTGACCAGATTAATCCATCTATTTCTGCATTCATATTACAACTATAAACCTGCATTATCCT
 TTATTAATCCAGAAGTACCTGATGAAAACAATTTTGATACATTGATGAAAACATCTGATGGTTTTACATT
 GAATGCTGAATCATATGTTTCCTTCAACCAAACTGGATATTCCTACTGCTGCTAAATATGAGTATGGG
 GTTCTCTGCAGACTTCAGATTCGTTTCTGAGATTTCTTCGTCCTGACATCATCTCTGTGCAGTATA
 ATAACCTGCAGGCCAGGCGTACTGGTTCACACCTGTAATCCCAGCACTCTGGGAGGCCGAGGCGAGAGG
 ATCACTTGAGGTACCTGATTCAAGAAAAAGGTCCCTATCACTGTTTCACTCCATCGTCACTCAGTCTCTA
 AATAAACGCTCACCCGACGGGAGGACACTGATGTGCTGCAGCCGACTCTCGTCAACGCTGGACACTTTA
 GCCTTTGCGTGAATGTTGTTCTTGAGGTAAAGTACAGCCTCACATACACAGATGCAGGTGAAGTACCAA
 AGCTGATCTCTCATTGTTCTGGGGACAGTTAGCAGCGTAGTGGTCCACTGCAGCAAAGTTTGAATTT
 CATTTTCTCAGGAAAATACCCAGCCAGTCCCTCTCAGTGGAAACCTGGTTATGTCGTGGGCTCCCAT
 TAGCTGCTGGATTCCAGCCTCATAGGGGTCTGGGATTATTCAGACCACAAATAGATATGGACAGCTTAC
 TATTCTTCATAGCACAACTGAGCAAGACTGCTTAGCACTGGAGGGGTCCGGACCCAGTATTATTTGGT
 TACACTATGCAATCTGGCTGTAAGTAAAGACTGACTGGAGCTCTCCCGTGTGAGCTCGTAGCACAGAAGG
 TGAAGAGCCTGTGTGGGGCCAGGGCTTCCAGATTACGTGGCCCTTTTGGAAATCCAGGCCAGGA
 CATGCTGGACTGGGTGCCATCCACTTCATACCCAGTCACTCAACAGGAAGGATTCCTGCCAGTCCCA
 GGGGCTTTGGTTATAGAAGTGAAGTGGACTAAATACGGATCCCTGCTGAATCCACAGGCCAAAATAGTCA
 ATGTAAGTCAAATCTAATTTTCCTCCTTTCTGAGGCCAACTCAGGAAATGAAAGGACGATTCTTAT
 TTCCACTGCGGTTACTTTTGTGGATGTCTGCACCTGCAGAGGCAGGCTTCAGAGCTCCACCAGCCATC
 AATGCCAGGCTGCCCTTAACTTCTTCCCGTTTGT

ACGCGTACGCGGCCGCTCGAGCAGAAACTCATCTCAGAAGAGGATCTGGCAGCAAATGATATCCTGGATT
 ACAAGGATGACGACGATAAGGTTTAA

Protein Sequence:

>RC208016 protein sequence
 Red=Cloning site Green=Tags(s)

MRPRGLPPLLVLVLLGCWASVSAQTDATPAVTTEGLNSTEALATFGTFPSTRPPGTPRAPGPSSGPRPTP
 VTDVAVLCVCDLSPAQCDINCCDPDCSSVDFSVFSACSVPVVTGDSQFCSQKAVIYSLNFTANPPQRVF
 ELVDQINPSIFCIHITNYKPAISFINPEVPDENNFDTLMKTSDFTLNAESYVSFTTKLDIPTAAKYEY
 VPLQTSDFSFLRFPSL TSSLCTDNNPAGQAYWFTPVIPALWEAEARGSLVPSRKKVPITVQSIQSL
 NKTLTRREDTDVLPQTLVNAGHFSLCVNVVLEVKYSLTYTDAGEVTKADLSFVLGTVSSVVVPLQKFEI
 HFLQENTQPVPLSGNPGYVVLPLAAGFQPHKSGSIQTNRYGQLTILHSTTEQDCLALEGVRTPVLF
 YTMQSGCKLRLTGALPCQLVAQVKSLWLGQGFDPYVAPFGNSQAQDMLDWVPIHFITQSFNRKDCQLP
 GALVIEVKWKYGSLLNPQAKIVNVTANLISSSFPEANSNERTILISTAVTFVDVSAPAEAGFRAPPAI
 NARLPNFFFPFV

TRTRPLEQKLISEEDLAANDILDYKDDDDKV

Chromatograms:

https://cdn.origene.com/chromatograms/mk6509_g05.zip

Restriction Sites:

Sgfl-MluI

Cloning Scheme:


ACCN: NM_024549

ORF Size: 1719 bp

OTI Disclaimer: The molecular sequence of this clone aligns with the gene accession number as a point of reference only. However, individual transcript sequences of the same gene can differ through naturally occurring variations (e.g. polymorphisms), each with its own valid existence. This clone is substantially in agreement with the reference, but a complete review of all prevailing variants is recommended prior to use. [More info](#)

OTI Annotation: This clone was engineered to express the complete ORF with an expression tag. Expression varies depending on the nature of the gene.

Components: The ORF clone is ion-exchange column purified and shipped in a 2D barcoded Matrix tube containing 10ug of transfection-ready, dried plasmid DNA (reconstitute with 100 ul of water).

Reconstitution Method:

1. Centrifuge at 5,000xg for 5min.
2. Carefully open the tube and add 100ul of sterile water to dissolve the DNA.
3. Close the tube and incubate for 10 minutes at room temperature.
4. Briefly vortex the tube and then do a quick spin (less than 5000xg) to concentrate the liquid at the bottom.
5. Store the suspended plasmid at -20°C. The DNA is stable for at least one year from date of shipping when stored at -20°C.

RefSeq: [NM_024549.6](#)

RefSeq Size: 1983 bp

RefSeq ORF: 1722 bp

Locus ID: 79600

UniProt ID: [Q2MV58](#)

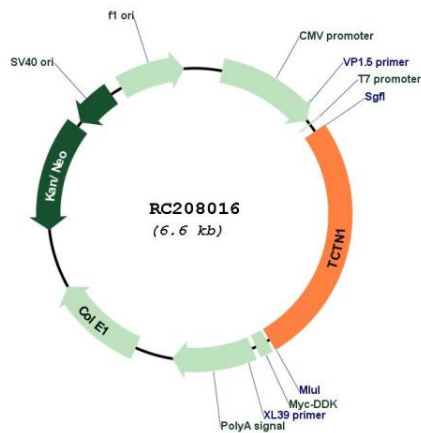
Cytogenetics: 12q24.11

Protein Families: Secreted Protein

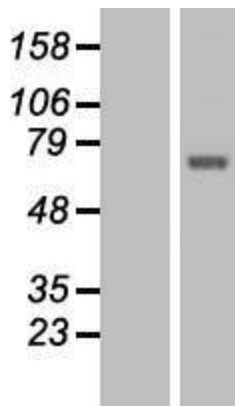
MW: 61.9 kDa

Gene Summary: This gene encodes a member of a family of secreted and transmembrane proteins. The orthologous gene in mouse functions downstream of smoothed and rab23 to modulate hedgehog signal transduction. This protein is a component of the tectonic-like complex, which forms a barrier between the ciliary axoneme and the basal body. A mutation in this gene was found in a family with Joubert syndrome-13. Alternative splicing results in multiple transcript variants. [provided by RefSeq, Feb 2016]

Product images:



Circular map for RC208016



Western blot validation of overexpression lysate (Cat# [LY411247]) using anti-DDK antibody (Cat# [TA50011-100]). Left: Cell lysates from untransfected HEK293T cells; Right: Cell lysates from HEK293T cells transfected with RC208016 using transfection reagent MegaTran 2.0 (Cat# [TT210002]).