

Product datasheet for **RC208015**

SURF5 (MED22) (NM_181491) Human Tagged ORF Clone

Product data:

Product Type:	Expression Plasmids
Product Name:	SURF5 (MED22) (NM_181491) Human Tagged ORF Clone
Tag:	Myc-DDK
Symbol:	SURF5
Synonyms:	MED24; SRB6; surf-5; SURF5
Mammalian Cell Selection:	Neomycin
Vector:	pCMV6-Entry (PS100001)
E. coli Selection:	Kanamycin (25 ug/mL)
ORF Nucleotide Sequence:	>RC208015 ORF sequence Red=Cloning site Blue=ORF Green=Tags(s)

TTTTGTAATACGACTCACTATAGGGCGGCCGGAATTCGTCGACTGGATCCGGTACCGAGGAGATCTGCC
GCC**CGATCGC**

ATGGCCAGCAGAGAGCCCTGCCCCAGAGCAAGGAGACGCTGCTGCAGTCCTACAACAAGCGGCTGAAGG
ACGACATTAAGTCCATCATGGACAATTCACCGAGATCATCAAGACCGCCAAGATTGAGGACGAGACGCA
GGTGTACGGGCCACTCAGGGTGAACAGGACAATTACGAGATGCATGTGCGAGCCGCCAACATCGTCCGA
GCCGGCGAGTCCCTGATGAAGCTGGTGTCCGACCTCAAGCAGTTCCTGATCCTCAATGACTTCCCCTCCG
TGAACGAGGCCATTGACCAGCGCAACCAGCAGCTGCGCACACTGCAGGAGGAGTGCAGCCGAAGCTCAT
CACGCTGCGAGACGAGATCTCCATTGACCTCTACGAGCTGGAGGAGGAGTATTACTCGTCCAGGTATAAA

ACGCGTACGCGGCCGCTCGAGCAGAACTCATCTCAGAAGAGGATCTGGCAGCAAATGATATCCTGGATT
ACAAGGATGACGACGATAAGGTTTAA

Protein Sequence:	>RC208015 protein sequence Red=Cloning site Green=Tags(s)
-------------------	--

MAQQRALPQSKETLLQSYNKRLKDDIKSIMDNFTEIIKTAKIEDETQVSRATQGEQDNYEMHVRAANIVR
AGESLMKLVSDLKQFLILNDFPSVNEAIDQRNQLRTLQEEDRKLITLRLDEISIDLYELEEYSSRYK

TRTRPLEQKLISEEDLAANDILDYKDDDDKV

Chromatograms:	https://cdn.origene.com/chromatograms/mk6342_e05.zip
----------------	---

Restriction Sites:	Sgfl-MluI
--------------------	-----------



[View online »](#)

Cloning Scheme:


ACCN: NM_181491

ORF Size: 420 bp

OTI Disclaimer: The molecular sequence of this clone aligns with the gene accession number as a point of reference only. However, individual transcript sequences of the same gene can differ through naturally occurring variations (e.g. polymorphisms), each with its own valid existence. This clone is substantially in agreement with the reference, but a complete review of all prevailing variants is recommended prior to use. [More info](#)

OTI Annotation: This clone was engineered to express the complete ORF with an expression tag. Expression varies depending on the nature of the gene.

Components: The ORF clone is ion-exchange column purified and shipped in a 2D barcoded Matrix tube containing 10ug of transfection-ready, dried plasmid DNA (reconstitute with 100 ul of water).

Reconstitution Method:

1. Centrifuge at 5,000xg for 5min.
2. Carefully open the tube and add 100ul of sterile water to dissolve the DNA.
3. Close the tube and incubate for 10 minutes at room temperature.
4. Briefly vortex the tube and then do a quick spin (less than 5000xg) to concentrate the liquid at the bottom.
5. Store the suspended plasmid at -20°C. The DNA is stable for at least one year from date of shipping when stored at -20°C.

Note: Plasmids are not sterile. For experiments where strict sterility is required, filtration with 0.22um filter is required.

RefSeq: [NM_181491.2](#)

RefSeq Size: 3910 bp

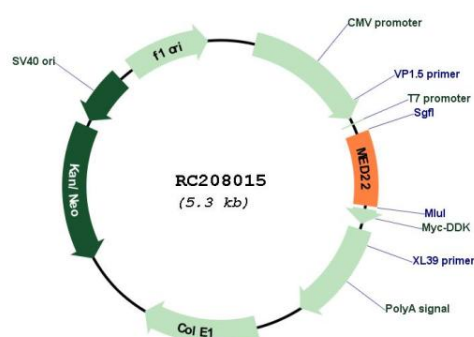
RefSeq ORF: 423 bp

Locus ID: 6837
UniProt ID: [Q15528](#)
Cytogenetics: 9q34.2

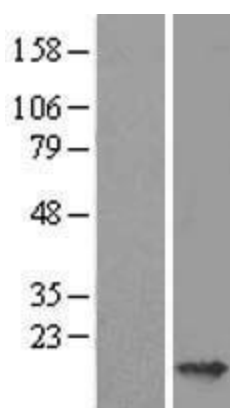
MW: 16.5 kDa

Gene Summary: This gene encodes a protein component of the mediator complex, which functions in the regulation of transcription by bridging interactions between gene-specific regulatory factors, RNA polymerase II, and general transcription factors. Alternatively spliced transcript variants encoding different isoforms have been observed. [provided by RefSeq, Jul 2013]

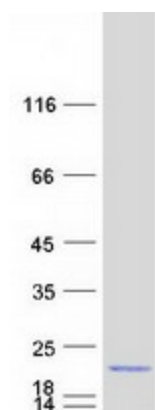
Product images:



Circular map for RC208015



Western blot validation of overexpression lysate (Cat# [LY405682]) using anti-DDK antibody (Cat# [TA50011-100]). Left: Cell lysates from untransfected HEK293T cells; Right: Cell lysates from HEK293T cells transfected with RC208015 using transfection reagent MegaTran 2.0 (Cat# [TT210002]).



Coomassie blue staining of purified MED22 protein (Cat# [TP308015]). The protein was produced from HEK293T cells transfected with MED22 cDNA clone (Cat# RC208015) using MegaTran 2.0 (Cat# [TT210002]).