

Product datasheet for **RC208014**

GDNF Receptor alpha 2 (GFRA2) (NM_001495) Human Tagged ORF Clone

Product data:

Product Type:	Expression Plasmids
Product Name:	GDNF Receptor alpha 2 (GFRA2) (NM_001495) Human Tagged ORF Clone
Tag:	Myc-DDK
Symbol:	GDNF Receptor alpha 2
Synonyms:	GDNFRB; NRTNR-ALPHA; NTNRA; RETL2; TRNR2
Mammalian Cell Selection:	Neomycin
Vector:	pCMV6-Entry (PS100001)
E. coli Selection:	Kanamycin (25 ug/mL)



[View online »](#)

ORF Nucleotide Sequence:

>RC208014 ORF sequence
 Red=Cloning site Blue=ORF Green=Tags(s)

TTTTGTAATACGACTCACTATAGGGCGGCCGGAATTCGTCGACTGGATCCGGTACCGAGGAGATCTGCC
 GCC**CGATCGCC**

ATGATCTTGGCAAACGTCTTCTGCCTCTTCTTCTTCTAGACGAGACCCTCCGCTCTTTGGCCAGCCCTT
 CCTCCCTGCAGGGCCCGAGCTCCACGGCTGGCGCCCCAGTGGACTGTGTCCGGGCAATGAGCTGTG
 TGCCGCCGAATCCAACCTCAGCTCTCGCTACCGCACTCTGCGGCAAGTGCCTGGCAGGCGCGACCGCAAC
 ACCATGCTGGCCAACAAGGAGTGCCAGGCGCCTTGGAGGTCTTGCAGGAGAGCCCGCTGTACGACTGCC
 GCTGCAAGCGGGCATGAAGAAGGAGCTGCAGTGTCTGCAGATCTACTGGAGCATCCACCTGGGGCTGAC
 CGAGGGTGAGGAGTTCTACGAAGCCTCCCCCTATGAGCCGGTGACCTCCCGCTCTCGGACATCTCAGG
 CTTGCTCAATCTTCTCAGGGACAGGGCAGCCCGTGGTCCAGCACAAGAGCAACCATTGCTGGATG
 CTGCCAAGGCCTGCAACCTGAATGACAACCTGCAAGAAGCTGCGCTCCTCCTACATCTCCATCTGCAACCG
 CGAGATCTCGCCACCGAGCGCTGCAACCGCCGCAAGTCCACAAGGCCCTGCGCCAGTTCTTCGACCGG
 GTGCCAGCGAGTACACCTACCGCATGCTTCTGCTCCTGCCAAGACCAGGCGTGCCTGAGCGCCGCC
 GGCAAACCATCCTGCCAGCTGCTCCTATGAGGACAAGGAGAAGCCCAACTGCCTGGACCTGCGTGGCGT
 GTGCCGGACTGACCACCTGTGTCGGTCCCGGTGGCCGACTTCCATGCCAATTGTCGAGCCTCCTACCAG
 ACGGTCACCAGCTGCCCTGCGGACAATTACCAGGCGTGTCTGGGCTTTATGCTGGCATGATTGGGTTTG
 ACATGACACCTAACTATGTGGACTCCAGCCCCACTGGCATCGTGGTGTCCCCCTGGTGCAGCTGTCGTGG
 CAGCGGGAACATGGAGGAGGAGTGTGAGAAGTTCTCAGGGACTTACCAGAGAACCATGCCCTCCGGAAC
 GCCATCCAGGCCCTTTGGCAACGGCACGGACGTGAACGTGTCCCCAAAAGGCCCTCGTTCAGGCCACCC
 AGCCCCCTCGGGTGGAGAAGACGCTTCTTTGCCAGATGACCTCAGTGACAGTACCAGCTTGGGGCCAG
 TGTTCATACCACCTGCAGTCTGTCCAGGAGCAGGGGCTGAAGGCCAACCAACTCCAAAGAGTTAAGCATG
 TGCTTACAGAGCTACGACAAATATATCCAGGGAGTAAAGGTGATCAAACCTAACTCAGGCCCA
 GCAGAGCCAGACCGTCCGCTGCCTTGACCGTGTCTGTCTGATGCTGAAACTGGCCTTG

ACGCGTACGCGGCCGCTCGAGCAGAACTCATCTCAGAAGAGGATCTGGCAGCAATGATATCCTGGATT
 ACAAGGATGACGACGATAAGGTTTAA

Protein Sequence:

>RC208014 protein sequence
 Red=Cloning site Green=Tags(s)

MILANVFCLFFFLDETLRSLASPSLQGPETHGWRPPVDCVRANELCAAESNCSSRYRTLRLQCLAGRDRN
 TMLANKECQAALVLEQESPLYDCRCKRGMKKELQCLQIYWSIHLGLTEGEEFYEASPYEPVTSRLSDIFR
 LASIFSGTGADPVVSAKSNHCLDAAKACNLNDNCKLRSSYISICNREISPTERCNRRKCHKALRQFFDR
 VPSEYTYRMLFCSCQDQACAERRRQTILPSCSYEDKEKPNCLDLRGVCRDHLCRSRLADFHANCRASYQ
 TVTSCPADNYQAQLGSYAGMIGFDMTPNYVDSSPTGIVVSPWCSCRSGNMEECEKFLRDFTENPCLRN
 AIQAFNGTQVNVSPKGPSFQATQAPRVEKTPSLPDDLSDSTSLGTSVITTCSTVQEQGLKANSKELSM
 CFTELTTNIIPGSNKVIKPNSGPSRARPSAALTVLSVLMKLLAL

TRTRPLEQKLISEEDLAANDILDYKDDDDKV

Chromatograms:

https://cdn.origene.com/chromatograms/mk6198_b09.zip

Restriction Sites:

Sgfl-MluI

Cloning Scheme:


ACCN: NM_001495

ORF Size: 1392 bp

OTI Disclaimer: The molecular sequence of this clone aligns with the gene accession number as a point of reference only. However, individual transcript sequences of the same gene can differ through naturally occurring variations (e.g. polymorphisms), each with its own valid existence. This clone is substantially in agreement with the reference, but a complete review of all prevailing variants is recommended prior to use. [More info](#)

OTI Annotation: This clone was engineered to express the complete ORF with an expression tag. Expression varies depending on the nature of the gene.

Components: The ORF clone is ion-exchange column purified and shipped in a 2D barcoded Matrix tube containing 10ug of transfection-ready, dried plasmid DNA (reconstitute with 100 ul of water).

Reconstitution Method:

1. Centrifuge at 5,000xg for 5min.
2. Carefully open the tube and add 100ul of sterile water to dissolve the DNA.
3. Close the tube and incubate for 10 minutes at room temperature.
4. Briefly vortex the tube and then do a quick spin (less than 5000xg) to concentrate the liquid at the bottom.
5. Store the suspended plasmid at -20°C. The DNA is stable for at least one year from date of shipping when stored at -20°C.

RefSeq: [NM_001495.5](#)

RefSeq Size: 3376 bp

RefSeq ORF: 1395 bp

Locus ID: 2675

UniProt ID: [O00451](#)

Cytogenetics: 8p21.3

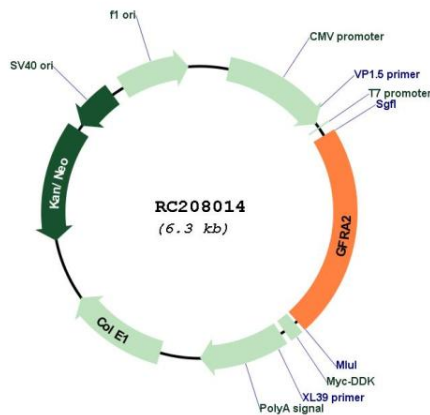
Domains: GDNF

Protein Families: Druggable Genome

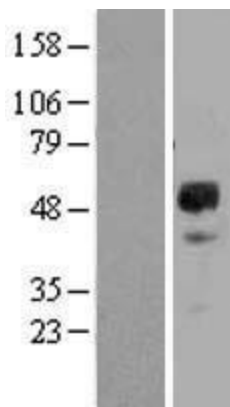
MW: 51.5 kDa

Gene Summary: Glial cell line-derived neurotrophic factor (GDNF) and neurturin (NTN) are two structurally related, potent neurotrophic factors that play key roles in the control of neuron survival and differentiation. The protein encoded by this gene is a member of the GDNF receptor family. It is a glycosylphosphatidylinositol(GPI)-linked cell surface receptor for both GDNF and NTN, and mediates activation of the RET tyrosine kinase receptor. This encoded protein acts preferentially as a receptor for NTN compared to its other family member, GDNF family receptor alpha 1. This gene is a candidate gene for RET-associated diseases. Multiple transcript variants encoding different isoforms have been found for this gene. [provided by RefSeq, Sep 2009]

Product images:



Circular map for RC208014



Western blot validation of overexpression lysate (Cat# [LY400573]) using anti-DDK antibody (Cat# [TA50011-100]). Left: Cell lysates from untransfected HEK293T cells; Right: Cell lysates from HEK293T cells transfected with RC208014 using transfection reagent MegaTran 2.0 (Cat# [TT210002]).