

Product datasheet for RC208009

HSPC111 (NOP16) (NM_016391) Human Tagged ORF Clone

Product data:

Product Type:	Expression Plasmids
Product Name:	HSPC111 (NOP16) (NM_016391) Human Tagged ORF Clone
Tag:	Myc-DDK
Symbol:	HSPC111
Synonyms:	HSPC111; HSPC185
Mammalian Cell Selection:	Neomycin
Vector:	pCMV6-Entry (PS100001)
E. coli Selection:	Kanamycin (25 ug/mL)
ORF Nucleotide Sequence:	>RC208009 ORF sequence Red=Cloning site Blue=ORF Green=Tags(s)

TTTTGTAATACGACTCACTATAGGGCGGCCGGAATTCGTCGACTGGATCCGGTACCGAGGAGATCTGCC
 GCCCGCATCGCC

ATGCCCAAGGCCAAGGGCAAAACCCGAGGCAGAAAGTTTGGTTACAGTGTCAACCGAAAGCGTCTGAACC
 GGAATGCTCGACGGAAGGCAGCGCCGCGGATCGAATGCTCCACATCCGACATGCCTGGGACCACGCTAA
 ATCGGTACGGCAGAACCTGGCCGAGATGGGTTGGCTGTGGACCCCAACAGGGCGGTGCCCTCCGTAAG
 AGAAAGGTGAAGGCCATGGAGTGGACATAGAGGAGAGGCCTAAGAGCTTGTACGGAAGCCCTATGTGC
 TGAATGACCTGGAGGCAGAACCCAGCCTTCCAGAAAAGAAAGAAATACTCTGTCTCGGGACCTCATTGA
 CTATGTACGCTACATGGTAGAGAACACGGGGAGGACTATAAGGCCATGGCCCGTGATGAGAAGAATTAC
 TATCAAGATACCCAAAACAGATTTCGGAGTAAGATCAACGCTCTATAAACGCTTTTACCCAGCAGAGTGGC
 AAGACTTCCTCGATTCTTTGCAGAAGAGGAAGATGGAGGTGGAG

ACGCGTACGCGGCCGCTCGAGCAGAACTCATCTCAGAAGAGGATCTGGCAGCAAATGATATCCTGGATT
 ACAAGGATGACGACGATAAGGTTTAA

Protein Sequence:	>RC208009 protein sequence Red=Cloning site Green=Tags(s)
-------------------	--

MPKAKGKTRRQKFGYSVNRKRLNRNARRKAAPRIECSHIRHAWDHAKSVRQNLAEMLAVDPNRAVPLRK
 RKVKAMEVDIEERPKELVKPYVLNDLEAEASLPEKKGNTLSRDLIDYVRYMVENHGEDYKAMARDEKNY
 YQDTPKQIRSKINVYKRFYPAEWQDFLDSLQKRKMEVE

TRTRPLEQKLISEEDLAANDILDYKDDDDKV

Chromatograms:	https://cdn.origene.com/chromatograms/mk6342_b01.zip
----------------	---


[View online »](#)

Restriction Sites: SgfI-MluI

Cloning Scheme:



ACCN: NM_016391

ORF Size: 534 bp

OTI Disclaimer: The molecular sequence of this clone aligns with the gene accession number as a point of reference only. However, individual transcript sequences of the same gene can differ through naturally occurring variations (e.g. polymorphisms), each with its own valid existence. This clone is substantially in agreement with the reference, but a complete review of all prevailing variants is recommended prior to use. [More info](#)

OTI Annotation: This clone was engineered to express the complete ORF with an expression tag. Expression varies depending on the nature of the gene.

Components: The ORF clone is ion-exchange column purified and shipped in a 2D barcoded Matrix tube containing 10ug of transfection-ready, dried plasmid DNA (reconstitute with 100 ul of water).

Reconstitution Method:

1. Centrifuge at 5,000xg for 5min.
2. Carefully open the tube and add 100ul of sterile water to dissolve the DNA.
3. Close the tube and incubate for 10 minutes at room temperature.
4. Briefly vortex the tube and then do a quick spin (less than 5000xg) to concentrate the liquid at the bottom.
5. Store the suspended plasmid at -20°C. The DNA is stable for at least one year from date of shipping when stored at -20°C.

Note: Plasmids are not sterile. For experiments where strict sterility is required, filtration with 0.22um filter is required.

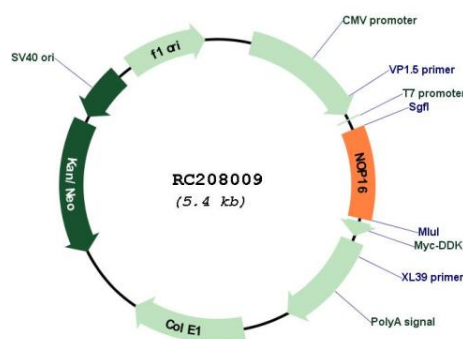
RefSeq: [NM_016391.8](#)

RefSeq Size: 1071 bp

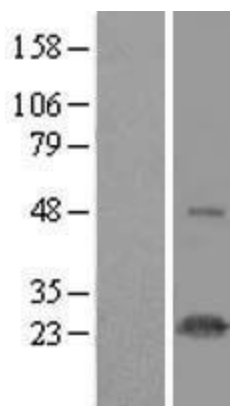
RefSeq ORF: 537 bp

Locus ID:	51491
UniProt ID:	Q9Y3C1
Cytogenetics:	5q35.2
Protein Families:	Druggable Genome
MW:	21.2 kDa
Gene Summary:	This gene encodes a protein that is localized to the nucleolus. Expression of this gene is induced by estrogens and Myc protein and is a marker of poor patient survival in breast cancer. Alternative splicing results in multiple transcript variants. [provided by RefSeq, Dec 2015]

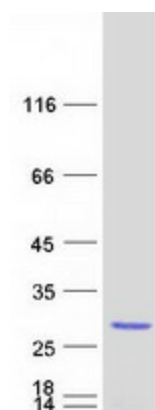
Product images:



Circular map for RC208009



Western blot validation of overexpression lysate (Cat# [LY413994]) using anti-DDK antibody (Cat# [TA50011-100]). Left: Cell lysates from untransfected HEK293T cells; Right: Cell lysates from HEK293T cells transfected with RC208009 using transfection reagent MegaTran 2.0 (Cat# [TT210002]).



Coomassie blue staining of purified NOP16 protein (Cat# [TP308009]). The protein was produced from HEK293T cells transfected with NOP16 cDNA clone (Cat# RC208009) using MegaTran 2.0 (Cat# [TT210002]).