

## Product datasheet for **RC208008**

### CCDC98 (FAM175A) (NM\_139076) Human Tagged ORF Clone

#### Product data:

Product Type:	Expression Plasmids
Product Name:	CCDC98 (FAM175A) (NM_139076) Human Tagged ORF Clone
Tag:	Myc-DDK
Symbol:	CCDC98
Synonyms:	ABRA1; CCDC98; FAM175A
Mammalian Cell Selection:	Neomycin
Vector:	pCMV6-Entry (PS100001)
E. coli Selection:	Kanamycin (25 ug/mL)
ORF Nucleotide Sequence:	>RC208008 ORF sequence Red=Cloning site Blue=ORF Green=Tags(s)

TTTTGTAATACGACTCACTATAGGGCGGCCGGAATTCGTCGACTGGATCCGGTACCGAGGAGATCTGCC  
GCC**CGATCGCC**

ATGACGTTTAGAGAGAGGCTGCTTCACAAAACTGCAGGAGCATTTTTCAAACCAAGACCTGTTTTTC  
TGCTATTAACACCAAGTATAATAACAGAAAGCTGCTCTACTCATCGACTGGAACATTCCTTATATAAACC  
TCAAAAAGGACTTTTTACAGGGTACCTTTAGTGGTTGCCAATCTGGGCATGTCTGAACAACTGGGTTAT  
AAAAGTATCAGGTTCTGTATGTCCACTGGTTTTAGCCGAGCAGTACAAACACACAGCTCTAAATTTT  
TTGAAGAAGATGGATCCTTAAAGGAGGTACATAAGATAAATGAAATGTATGCTTCATTACAAGAGGAATT  
AAAGAGTATATGCAAAAAGTGGAGACAGTGAACAAGCAGTAGATAAACTAGTAAAGGATGTAACAGA  
TTAAAACGAGAAATTGAGAAAAGGAGAGGACACAGATTCAGGCAGCAAGAGAGAAGAACATCCAAAAG  
ACCCTCAGGAGAACATTTTTCTTTGTCAGGCATTACGGACCTTTTTTCCAAATCTGAATTTCTTCATTC  
ATGTGTTATGTCTTTAAAAATAGACATGTTTCTAAAAGTAGCTGTAACCTACAACCACCATCTCGATGTA  
GTAGACAATCTGACCTTAATGGTAGAACACACTGACATTCCTGAAGCTAGTCCAGCTAGTACACCACAAA  
TCATTAAGCATAAAGCCTTAGACTTAGATGACAGATGGCAATTCAGAGATCTCGGTTGTTAGATACACA  
AGACAAACGATCTAAAGCAGATACTGGTAGTAGTAACCAAGATAAAGCATCCAAAATGAGCAGCCAGAA  
ACAGATGAAGAAATTGAAAAGATGAAGGGTTTTGGTGAATATTCACGGTCTCCTACATTT

**ACGCGT**ACGCGGCCGCTCGAGCAGAAACTCATCTCAGAAGAGGATCTGGCAGCAAATGATATCCTGGATT  
ACAAGGATGACGACGATAAGGTTTAA



[View online »](#)

**Protein Sequence:** >RC208008 protein sequence  
Red=Cloning site Green=Tags(s)

MTFRERLLHKNLQEHFSNQDLVFLLLTPSIITESCSTHRLEHSLYKPQKGLFHRVPLVVANLGMSEQLGY  
 KTVSGSCMSTGFSRAVQTHSSKFFEEEDGSLKEVHKINEMYASLQEELKSI CKKVEDSEQAVDKLVKDVNR  
 LKREIEKRRGAQIQAAAREKNIQKDPQENIFLCQALRTFFPNSEFLHSCVMSLKNRHVSKSSCYNHHLDV  
 VDNL TLMVEHTDIPEASPASTPQIIKHKALDLDDRWFKRSRLD TDQKRSKADTGSSNQDKASKMSSPE  
 TDEEIEKMKGFGEYSRSPTF

TRTRPLEQKLISEEDLAANDILDYKDDDDKV

**Chromatograms:** [https://cdn.origene.com/chromatograms/mk6342\\_b08.zip](https://cdn.origene.com/chromatograms/mk6342_b08.zip)

**Restriction Sites:** SgfI-MluI

**Cloning Scheme:**



**ACCN:** NM\_139076

**ORF Size:** 900 bp

**OTI Disclaimer:** The molecular sequence of this clone aligns with the gene accession number as a point of reference only. However, individual transcript sequences of the same gene can differ through naturally occurring variations (e.g. polymorphisms), each with its own valid existence. This clone is substantially in agreement with the reference, but a complete review of all prevailing variants is recommended prior to use. [More info](#)

**OTI Annotation:** This clone was engineered to express the complete ORF with an expression tag. Expression varies depending on the nature of the gene.

**Components:** The ORF clone is ion-exchange column purified and shipped in a 2D barcoded Matrix tube containing 10ug of transfection-ready, dried plasmid DNA (reconstitute with 100 ul of water).

**Reconstitution Method:**

1. Centrifuge at 5,000xg for 5min.
2. Carefully open the tube and add 100ul of sterile water to dissolve the DNA.
3. Close the tube and incubate for 10 minutes at room temperature.
4. Briefly vortex the tube and then do a quick spin (less than 5000xg) to concentrate the liquid at the bottom.
5. Store the suspended plasmid at -20°C. The DNA is stable for at least one year from date of shipping when stored at -20°C.

**RefSeq:** [NM\\_139076.1](#), [NP\\_620775.1](#)

**RefSeq Size:** 2835 bp

**RefSeq ORF:** 1230 bp

**Locus ID:** 84142

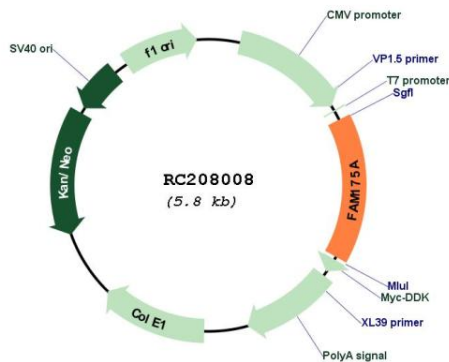
**UniProt ID:** [Q6UWZ7](#)

**Cytogenetics:** 4q21.23

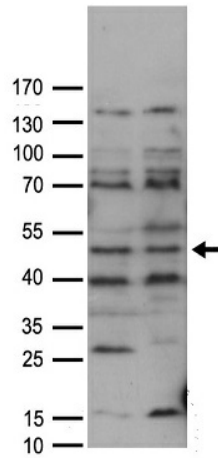
**MW:** 34.4 kDa

**Gene Summary:** This gene encodes a protein that binds to the C-terminal repeats of breast cancer 1 (BRCA1) through a phospho-SXXF motif. The encoded protein recruits ubiquitin interaction motif containing 1 protein to BRCA1 protein and is required for DNA damage resistance, DNA repair, and cell cycle checkpoint control. Pseudogenes of this gene are found on chromosomes 3 and 8. Alternative splicing results in multiple transcript variants. [provided by RefSeq, Sep 2016]

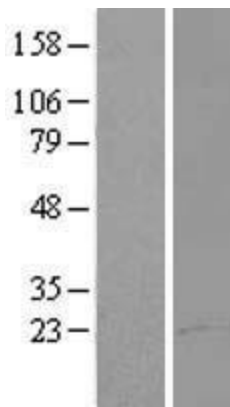
**Product images:**



Circular map for RC208008



HEK293T cells were transfected with the pCMV6-ENTRY control (Cat# [PS100001], Left lane) or pCMV6-ENTRY FAM175A (Cat# RC208008, Right lane) cDNA for 48 hrs and lysed. Equivalent amounts of cell lysates (5 ug per lane) were separated by SDS-PAGE and immunoblotted with anti-FAM175A antibody (Cat# [TA890042]). Positive lysates [LY408418] (100ug) and [LC408418] (20ug) can be purchased separately from OriGene.



Western blot validation of overexpression lysate (Cat# [LY408418]) using anti-DDK antibody (Cat# [TA50011-100]). Left: Cell lysates from untransfected HEK293T cells; Right: Cell lysates from HEK293T cells transfected with RC208008 using transfection reagent MegaTran 2.0 (Cat# [TT210002]).