

## Product datasheet for **RC208006**

### EMX1 (NM\_004097) Human Tagged ORF Clone

#### Product data:

Product Type:	Expression Plasmids
Product Name:	EMX1 (NM_004097) Human Tagged ORF Clone
Tag:	Myc-DDK
Symbol:	EMX1
Mammalian Cell Selection:	Neomycin
Vector:	pCMV6-Entry (PS100001)
E. coli Selection:	Kanamycin (25 ug/mL)
ORF Nucleotide Sequence:	>RC208006 ORF sequence Red=Cloning site Blue=ORF Green=Tags(s)

TTTTGTAATACGACTCACTATAGGGCGGCCGGAATTCGTCGACTGGATCCGGTACCGAGGAGATCTGCC  
GCC**CGATCGCC**

ATGTGCCTGGCTGGGTGCACACCCCGCAAGGCGGGCGGCCAGGACGCGGAGCGCTCCCCAGAGCACGGC  
TGCCTCGCACAGCTCCCGCGGCTGCGACCATGTTCCAGCCCGCGCCAAGCGCGGCTTTACCATAGAGTC  
CTTGGTGGCCAAGGACGGCGGCACCGCGGGGGCACTGGCGGGGGGCGCGGGCTCCCATCTCCTGGCG  
GCGGCGCCTCCGAGGAACCGCTCCGGCCACGGCGCTCAACTACCCTCACCCAGCGCGGCCGAGGGCG  
CCTTCGTGAGTGGCTTCCCTGCGCGGCCCGCGGGCGCGGGCCGCTCGCTCTACGGTGGGCCCGAGCT  
CGTGTTCGCCGAGGCCATGAACCACCCCGCTGACCGTGCATCCGGCGCACAGCTGGGCGCCTCCCCG  
CTGCAGCCCCGCACTCCTTCTTCGCGGCCAGCACCGGACCTCTCCATTTCTACCCCTGGGTCTGC  
GGAACCGTTCCTCGGCCACCGTTCAGGCCAGCGACGTGCCCGAGGACGGGCTGCTTCTGCACGGCCC  
CTTCGCACGCAAGCCCAAGCGGATCCGCACGGCCTTCTCGCCCTCGCAGCTGCTGCGGCTGGAGCGCGCC  
TTCGAGAAGAACCCTACGTGGTGGGCGCCGAGCGGAAGCAGCTGGCCGGCAGTCTCAGCCTCTCCGAGA  
CGCAGGTGAAGGTGTGGTTCAGAACCGGAGGACAAAGTACAAACGGCAGAAGCTGGAGGAGGAAGGGCC  
TGAGTCCGAGCAGAAGAAGAAGGGCTCCATCACATCAACCGGTGGCGCATTGCCACGAAGCAGGCCAAT  
GGGGAGGACATCGATGTCACCTCCAATGAC

**ACGCGT**ACGCGGCCGCTCGAGCAGAAACTCATCTCAGAAGAGGATCTGGCAGCAAATGATATCCTGGATT  
ACAAGGATGACGACGATAAGGTTTAA



[View online »](#)

**Protein Sequence:** >RC208006 protein sequence  
Red=Cloning site Green=Tags(s)

MCLAGCTPRKAAAPGRGALPRARLPRTAPAAATMFQPAAKRGFTIESLVAKDGGTGGGTGGGGAGSHLLA  
 AAASEEPLRPTALNYPHPSAEEAAFVSGFPAAAAAGAGRSLYGGPELVFPEAMNHPALTVHPAHLGASP  
 LQPPHSFFGAQHRDPLHFYPWVLRNRFHGHRFQASDVPQDGLLLHGPFARKPKRIRTAFAFSPSLLRLERA  
 FEKNHYVVGAEKQLAGLSLSETQVKVWFQNRRTKYKRQKLEEEGPESEQKKKGSHHINRWRIATKQAN  
 GEDIDVTSND

TRTRPLEQKLISEEDLANDILDYKDDDDKV

**Chromatograms:** [https://cdn.origene.com/chromatograms/mk6852\\_c08.zip](https://cdn.origene.com/chromatograms/mk6852_c08.zip)

**Restriction Sites:** SgfI-MluI

**Cloning Scheme:**

Cloning sites used for ORF Shuttling:



\* The last codon before the Stop codon of the ORF

**ACCN:** NM\_004097

**ORF Size:** 870 bp

**OTI Disclaimer:** The molecular sequence of this clone aligns with the gene accession number as a point of reference only. However, individual transcript sequences of the same gene can differ through naturally occurring variations (e.g. polymorphisms), each with its own valid existence. This clone is substantially in agreement with the reference, but a complete review of all prevailing variants is recommended prior to use. [More info](#)

**OTI Annotation:** This clone was engineered to express the complete ORF with an expression tag. Expression varies depending on the nature of the gene.

**Components:** The ORF clone is ion-exchange column purified and shipped in a 2D barcoded Matrix tube containing 10ug of transfection-ready, dried plasmid DNA (reconstitute with 100 ul of water).

**Reconstitution Method:**

1. Centrifuge at 5,000xg for 5min.
2. Carefully open the tube and add 100ul of sterile water to dissolve the DNA.
3. Close the tube and incubate for 10 minutes at room temperature.
4. Briefly vortex the tube and then do a quick spin (less than 5000xg) to concentrate the liquid at the bottom.
5. Store the suspended plasmid at -20°C. The DNA is stable for at least one year from date of shipping when stored at -20°C.

**RefSeq:** [NM\\_004097.2](#), [NP\\_004088.2](#)

**RefSeq Size:** 2188 bp

**RefSeq ORF:** 873 bp

**Locus ID:** 2016

**UniProt ID:** [Q04741](#)

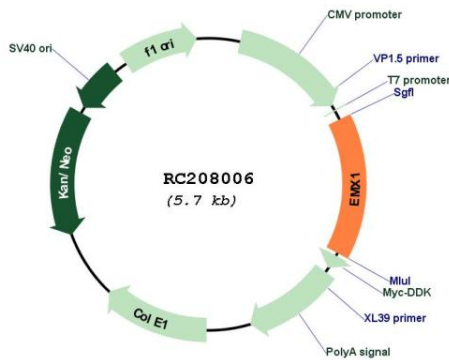
**Cytogenetics:** 2p13.2

**Protein Families:** Druggable Genome, ES Cell Differentiation/IPS

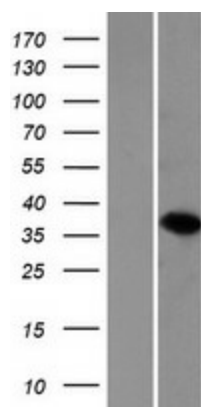
**MW:** 31.3 kDa

**Gene Summary:** Transcription factor, which in cooperation with EMX2, acts to generate the boundary between the roof and archipallium in the developing brain. May function in combinations with OTX1/2 to specify cell fates in the developing central nervous system.[UniProtKB/Swiss-Prot Function]

### Product images:



Circular map for RC208006



Western blot validation of overexpression lysate (Cat# [LY418217]) using anti-DDK antibody (Cat# [TA50011-100]). Left: Cell lysates from untransfected HEK293T cells; Right: Cell lysates from HEK293T cells transfected with RC208006 using transfection reagent MegaTran 2.0 (Cat# [TT210002]).