

Product datasheet for **RC208003**

NEK10 (NM_001031741) Human Tagged ORF Clone

Product data:

Product Type:	Expression Plasmids
Product Name:	NEK10 (NM_001031741) Human Tagged ORF Clone
Tag:	Myc-DDK
Symbol:	NEK10
Synonyms:	CILD44
Mammalian Cell Selection:	Neomycin
Vector:	pCMV6-Entry (PS100001)
E. coli Selection:	Kanamycin (25 ug/mL)



[View online »](#)

ORF Nucleotide Sequence:

>RC208003 ORF sequence
 Red=Cloning site Blue=ORF Green=Tags(s)

TTTTGTAATACGACTCACTATAGGGCGGCCGGAATTCGTCGACTGGATCCGGTACCGAGGAGATCTGCC
 GCC**GCGATCGCC**

ATGGTTCTCTGTACAGCCTGCAGAACCCCCGAGGTACTGAAGAGTGAGCCGTATGGGAGAAAGGCTGATG
 TCTGGGCAGTAGGCTGCATCCTTTATCAGATGGGACTTTGAGTCCCCCTTCTACAGCACTAACATGCT
 GTCCTTGCTACAAAAATAGTGGAGCGGTATATGAACCAAGTCCAGAAAGGTATCTACTCTGAAAAAGTA
 ACAGACACCATCAGCAGGTGCCTCACTCCTGATGCGGAAGCTCGTCCAGATATTGTAGAAGTCAGTTCGA
 TGATATCAGATGTCATGATGAAATATTTAGACAACCTTCTACATCCCAGTTGTCCTTGGAAAAGAGCT
 AGAACGGGAACGAAGACGCACACAAAGGTATTTTATGGAAGCCAACCGAACACCGTCACATGTCACCAT
 GAGCTGGCTGTTCTATCTCACGAGACCTTTGAGAAGGCAAGTTTGTAGTAGCAGCAGCAGTGGAGCAGCCA
 GCCTGAAAAGTGAACCTTCAGAAAGCGCAGACCTGCCCTGAAGGCTTCCAGGCCTCCTATGGTAAAGA
 CGAAGACAGGGCCTGTGACGAAATCCTGTCAGATGATAACTTCAACCTGGAAAATGCTGAGAAAATACA
 TATTTCAGAGGTAGATGATGAATTGGACATTTCCGATAACTCCAGCAGCTCCAGTTCAAGCCCTCTGAAA
 AATCTACATTCAACATTTTAAAGAGAAGTTTTAGTGCTTCAGGAGGAGAAAGACAATCCCAACAAGGGA
 CTTCACTGGAGGAACAGGATCAAGACCAAGACCAGCTTTGCTGCCTCTTGACCTGCTTCTGAAAAGTGCCA
 CCCCATATGCTCAGGGCCACATTAAGGAAATAGAGGCTGAGTTAGTGACAGGGTGGCAGTCCCATAGCC
 TTCCTGCTGTGATTCTTCGAAATCTCAAAGATCATGCATCAGCAGGAATTGCTGTGTCCCAGAGGAAAGT
 GCGTCAGATCAGTGCATCTTACAGCAGATTAATTCAGCTGCACAAAATAATCTATATCACACAGCTT
 CCTCCAGCTTTGCACCACAATTTGAAAAGAAGGGTTATAGAGAGATTCAAGAAAATCCCTCTCAGCCAGC
 AGAGTAACCTTGTAATTTGAAATCTGAAATTAAGAAAGTTATCTCAGGGATCTCCAGAACCGATTGACC
 CAACTTTTTTCACAGCAGATTACCATTTTATACATCGTTTCATCCGGTGGAAACAGCCTGTCCCAAAATGAC
 CCTACAGGTTTACCAACCAGCATTGAATTGGAGGAAGGAATAACATATGAACAGATGCAGACTGTGATTG
 AAGAAGTCCTTGAGGAAAGTGGCTATTACAATTTTACATCTAACAGGTATCATTCTATCCATGGGGGAC
 CAAGAATCACCAACCAAAAAGA

ACGCGTACGCGGCCGCTCGAGCAGAAACTCATCTCAGAAGAGGATCTGGCAGCAATGATATCCTGGATT
 ACAAGGATGACGACGATAAGGTTTAA

Protein Sequence:

>RC208003 protein sequence
 Red=Cloning site Green=Tags(s)

MVPVQPAEPPEVLKSEPYGEKADVWAVGCILYQMATLSPPFYSTNMLSLATKIVEAVYEPVPEGIYSEKV
 TDTISRCLTPDAEARPDIVEVSSMISDVMMKYLDNLSTSQLSLEKKLERERRRTRQRYFMEANRNTVTCHH
 ELAVLSHETFEEKASLSSSSSGAASLKSELSEADLPPEGFQASYGKDEDACDEILSDDNFLENAEKDT
 YSEVDDELDISDNSSSSSSSPLKESTFNILKRSFSASGGERQSQRDFTGGTGSRRPALLPLDLLLKVP
 PHMLRAHIKEIEAELVTGWQSHSLPAVILRNLDKDHASAGIAVSQRKVRQISDPIQQILQLHKIIYITQL
 PPALHNLKRRVIERFKKSLFSQQSNPNLKEIKKLSQGSPEPIEPNFFTADYHLLHRSSGGNSLSPND
 PTGLPTSIELEEGITYEQMOTVIEEVLEESGYNFTSNRYHSYPWGTKNHPTKR

TRTRPLEQKLISEEDLAANDILDYKDDDDKV

Chromatograms:

https://cdn.origene.com/chromatograms/mk6513_c07.zip

Restriction Sites:

Sgfl-Mlul

Cloning Scheme:


ACCN: NM_001031741

ORF Size: 1422 bp

OTI Disclaimer: The molecular sequence of this clone aligns with the gene accession number as a point of reference only. However, individual transcript sequences of the same gene can differ through naturally occurring variations (e.g. polymorphisms), each with its own valid existence. This clone is substantially in agreement with the reference, but a complete review of all prevailing variants is recommended prior to use. [More info](#)

OTI Annotation: This clone was engineered to express the complete ORF with an expression tag. Expression varies depending on the nature of the gene.

Components: The ORF clone is ion-exchange column purified and shipped in a 2D barcoded Matrix tube containing 10ug of transfection-ready, dried plasmid DNA (reconstitute with 100 ul of water).

Reconstitution Method:

1. Centrifuge at 5,000xg for 5min.
2. Carefully open the tube and add 100ul of sterile water to dissolve the DNA.
3. Close the tube and incubate for 10 minutes at room temperature.
4. Briefly vortex the tube and then do a quick spin (less than 5000xg) to concentrate the liquid at the bottom.
5. Store the suspended plasmid at -20°C. The DNA is stable for at least one year from date of shipping when stored at -20°C.

RefSeq: [NM_001031741.1](#), [NP_001026911.1](#)

RefSeq Size: 2085 bp

RefSeq ORF: 1425 bp

Locus ID: 152110

UniProt ID: [Q6ZWH5](#)

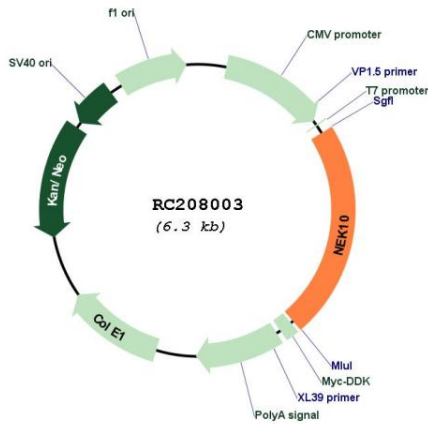
Cytogenetics: 3p24.1

Protein Families: Druggable Genome, Protein Kinase

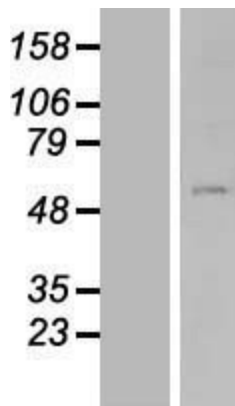
MW: 53.1 kDa

Gene Summary: Plays a role in the cellular response to UV irradiation. Mediates G2/M cell cycle arrest, MEK autoactivation and ERK1/2-signaling pathway activation in response to UV irradiation. [UniProtKB/Swiss-Prot Function]

Product images:



Circular map for RC208003



Western blot validation of overexpression lysate (Cat# [LY422186]) using anti-DDK antibody (Cat# [TA50011-100]). Left: Cell lysates from untransfected HEK293T cells; Right: Cell lysates from HEK293T cells transfected with RC208003 using transfection reagent MegaTran 2.0 (Cat# [TT210002]).