

Product datasheet for **RC207997**

ZNF677 (NM_182609) Human Tagged ORF Clone

Product data:

Product Type:	Expression Plasmids
Product Name:	ZNF677 (NM_182609) Human Tagged ORF Clone
Tag:	Myc-DDK
Symbol:	ZNF677
Mammalian Cell Selection:	Neomycin
Vector:	pCMV6-Entry (PS100001)
E. coli Selection:	Kanamycin (25 ug/mL)



[View online »](#)

ORF Nucleotide Sequence:

>RC207997 ORF sequence
 Red=Cloning site Blue=ORF Green=Tags(s)

TTTTGTAATACGACTCACTATAGGGCGGCCGGAATTCGTCGACTGGATCCGGTACCGAGGAGATCTGCC
 GCC**CGGATCGCC**

ATGGCTCTTTCTCAGGGACTGTTTACATTC AAGGATGTGGCCATAGAATTCTCTCAAGAGGAGTGGGAGT
 GCCTGGACCTTGCCAGAGGGCCTTGACAGGGACGTGATGTTGGAGAACTACAGGAACCTGCTTTCTCT
 CGATGAGGATAACATCCCTCCAGAAGATGATATTTCTGTTGGATTTACAAGCAAGGGATTATCACC AAAG
 GAAAATAAAGAGGAATTATACCATCTGGTGATATTAGAAAAGAAAGAAAGCCATGGCATCAACAATT
 TTGACCTCAAGGAAGTCTGGGAAAATATGCCTAAGTTTGACAGCCTGTGGGACTATGATGTAAAAATTA
 CAAAGGAATGCCTTTGACCTGTAACAAAAATCTCACTCACAGAAAAGATCAACAACATAATAAATCTCTCA
 ATACATTTCTCTTAAAGCAGAGTGTCTATAAGAGATAGTGCACACCAGTATTTCCATCCATGACAAGC
 CATTATAAGGAATTTGTTAAAAGTAAAATAACATAAGGTATGCCGAAACAAATACGTGAAGTGT
 TGAAAATAAAATTTGATTAAAGCTTACAGGCACAGCTGGCTGAACACAGAGATTTCAAACGGGGAGAAA
 ATGTATGAATGAATCCAGTTGAGAAGTCTATCAATAGTTCCTCAGTTTACCACCTTCTCTTGTGTCA
 AAAACATTTGTAATAAATATAGGAAGATTTGAAATACCTTTATTACATACACAGTATGGGAGAACACA
 CATTAGAGAAAAATCATACAAGTGAATGACTGTGGAAAGGCTTTTAGCAAAAAGTTGCAACCTCACTAAT
 CATCAGAGAATTCACCTCTGGACAGAGACCTTACAAATGTAAAGAGTGTGGCAAAGCCTTTAACAGTGT
 CGAACCTCACTAGGCATCAGAGAGTCCATACAGGAGAGAAACCATATCAATGTAATATATGTGGCAAGGT
 CTGTAGTCAAAATTCAAATCTTGCAAGTCAACAGAGATGACTGGAGAGAAACCTTACAAATGTAAT
 GAATGTGGTAAGGCATTTATCCAGCGTTCACACCTTTGGGGTCAAGGCTTACCAACATAAGGAGAAAC
 CTTACAAATGTAATGAATGTGACAAAGCCTTTGCTGAACGTTCAAGCCTTACCAACATAAGGAGAAAC
 TACTGGAGAGAAGCCTTACATATGTAATGAGTGTGGCAAAGCTTTTAAAGCAGTGCTCACATCTCACTAGG
 CATCAGAATATACATCCTGGAGAGAAACACACAATGTAAATGTGTGTGGCAGGGCTTTTATCCAAAGTT
 CAAGTCTGTGGAACATCAGAGAATTCACACTGGAGAAAAACCTTACAAATGTAATAAATGTGATAAAGC
 TTTTATCAAACGTTACACCTTTGGGGTCAACAGAACTCACTGGAGAGAAACCTTACAAATGTACT
 GAATGTGGCAAAGCCTTTACTGAACGTTCAAATCTTACTCAGCATAAGAAAATCCACTGGAGAGAAAC
 CTTACAAATGTACTGAATGTGGCAAAGCTTTACCAATTTGCAAACCTCACTAGACACCAGAAAATACA
 CATTGAAAAGAAACATTGTAACATAATATACATGGTAATGCTTTATTCCAAAGTTCAAACCTTGGAGAT
 CATCAAAAAGTTATAATAGAGAAAACATATCAAAATATAATGAGACAAAATTAAGTATCAAGCTGTA
 CC

ACGCGTACGCGGCCGCTCGAGCAGAAACTCATCTCAGAAGAGGATCTGGCAGCAAATGATATCCTGGATT
 ACAAGGATGACGACGATAAGGTTTAA

Protein Sequence:

>RC207997 protein sequence
 Red=Cloning site Green=Tags(s)

MALSQGLFTFKDVAIEFSQEWECLDPAQRALYRDVMLENYRNLLSLDEDNIPPEDDISVGFTSKGLSPK
 ENNKEELYHLVILERKESHGINNFDLKEVWENMPKFDLSLWDYDVKNYKGMPLTCNKNLTHRKDQQHNKSS
 IHFSLKQSVSIRDSAHQYFIHDKPFI RNLLKLNIRYAGNKYVKCFENKIGLSLQAQLAELQRFQTGEK
 MYECNPVEKINSVSSVPLPPCVKNICNKYRKILKYPLLTQYGRTHIREKSYKCNDCGKAFSKSSNLTN
 HQRHSGQRPYKCNECGKAFNQCSNLTRHQRVHTGEKPYQCNICGKVCQSNSNLASHQRMHTGEKPYKCN
 ECGKAFIQRSHLWGHRIHTGEKPYKCNCDKAF AERSSLTQHKRIHTGEKPYICNECGKAFKQCSHLTR
 HQNIHPGEKPHKCNVCGRAFIQSSSLVEHQRIHTGEKPYKCNCDKAFIKRSHLWGHQRTHHTGEKPYKCT
 ECGKAFTERSNTQHKKIHTGEKPYKCTECGKAF TQFANLTRHQKIHIEKKHKHNIHGNAIFQSSNLGD
 HQKSYNREKHIKYNETKIKYSSCT

TRTRPLEQKLISEEDLAANDILDYKDDDDKV

Chromatograms:

https://cdn.origene.com/chromatograms/mk6352_g08.zip

Restriction Sites: SgfI-MluI

Cloning Scheme:



ACCN: NM_182609

ORF Size: 1752 bp

OTI Disclaimer: The molecular sequence of this clone aligns with the gene accession number as a point of reference only. However, individual transcript sequences of the same gene can differ through naturally occurring variations (e.g. polymorphisms), each with its own valid existence. This clone is substantially in agreement with the reference, but a complete review of all prevailing variants is recommended prior to use. [More info](#)

OTI Annotation: This clone was engineered to express the complete ORF with an expression tag. Expression varies depending on the nature of the gene.

Components: The ORF clone is ion-exchange column purified and shipped in a 2D barcoded Matrix tube containing 10ug of transfection-ready, dried plasmid DNA (reconstitute with 100 ul of water).

- Reconstitution Method:
1. Centrifuge at 5,000xg for 5min.
 2. Carefully open the tube and add 100ul of sterile water to dissolve the DNA.
 3. Close the tube and incubate for 10 minutes at room temperature.
 4. Briefly vortex the tube and then do a quick spin (less than 5000xg) to concentrate the liquid at the bottom.
 5. Store the suspended plasmid at -20°C. The DNA is stable for at least one year from date of shipping when stored at -20°C.

RefSeq: [NM_182609.3](#)

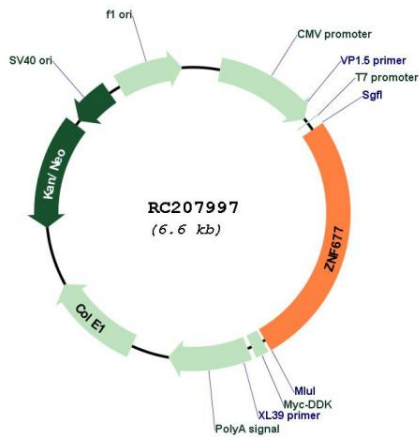
RefSeq Size: 3509 bp

RefSeq ORF: 1755 bp

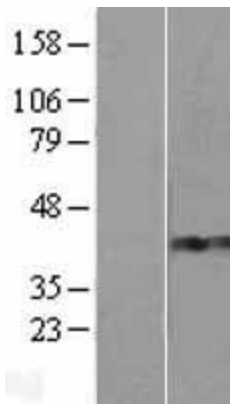
Locus ID: 342926

UniProt ID: [Q86XU0](#)
Cytogenetics: 19q13.42
Protein Families: Transcription Factors
MW: 68 kDa
Gene Summary: May be involved in transcriptional regulation.[UniProtKB/Swiss-Prot Function]

Product images:



Circular map for RC207997



Western blot validation of overexpression lysate (Cat# [LY405455]) using anti-DDK antibody (Cat# [TA50011-100]). Left: Cell lysates from untransfected HEK293T cells; Right: Cell lysates from HEK293T cells transfected with RC207997 using transfection reagent MegaTran 2.0 (Cat# [TT210002]).