

Product datasheet for RC207996

LRATD2 (NM_174911) Human Tagged ORF Clone

Product data:

Product Type: Expression Plasmids
Product Name: LRATD2 (NM_174911) Human Tagged ORF Clone
Tag: Myc-DDK
Symbol: LRATD2
Synonyms: BCMP101; FAM84B; NSE2
Mammalian Cell Selection: Neomycin
Vector: pCMV6-Entry (PS100001)
E. coli Selection: Kanamycin (25 ug/mL)
ORF Nucleotide Sequence: >RC207996 ORF sequence
 Red=Cloning site Blue=ORF Green=Tags(s)

TTTTGTAATACGACTCACTATAGGGCGCCGGGAATTCGTCGACTGGATCCGGTACCGAGGAGATCTGCC
 GCC**CGATCGC**C

ATGGGCAACCAGGTGGAGAAATTGACCCACCTAAGTTACAAGGAAGTCCCACGGCCGACCCGACTGGCG
 TGGACCGGGACGACGGGCCCGCATTGGGGTCTCCTACATTTTCTCCAATGACGATGAGGACGTGGAGCC
 GCAGCCGCCGCTCAGGGGCCAGATGGCGCGGCTTGCCCGACGGTGGGACGGGCCGCCGCCCGCCAG
 CCGCAGCCCTACGATCCGCGGCTGCACGAGGTGGAATGCTCCGTGTTCTACGGGACGAATGCATCTACC
 AGAAGAGCTTCGCGCCGGGCTCGGCGGCGCTGAGTACCTACACGCCGAGAACCTGCTCAACAAGTGCAA
 GCCGGGCGATCTGGTGGAGTTCTGTGTCGACGGCTCAGTACCCGCACTGGGCCGTATATGTGGTAACTTC
 CAGGTGGTGCACCTGCACCGGCTGGAGGTGATTAACAGCTTCTGACTGACGCCAGCCAGGGCCGTGCGG
 GCCGCGTGGTCAACGATCTGTACCGCTACAAGCCGCTAAGCTCCAGCGCCGTGGTGCACGCGCTGGC
 GCACGTGGGTGCCAAGGAGCGCGAGCTGAGCTGGCGCAACTCGGAGAGTTTCGCCGCTGGTGCCGCTAC
 GGCAAGCGCGAGTTCAAGATCGGCGGCGAGCTGCGCATCGGAAGCAGCCCTACCGGCTGCAGATTACAG
 TGTCCGCGCAGCGCAGTACACGCTCGAGTTCCAGAGTCTAGAGGACCTGATCATGGAGAAGCGACGCAA
 CGACCAGATCGGGCGCGCGGCGTGTGCAGGAGCTCGCCACGCACCTGCACCCGGCGGAGCCGGAGGAG
 GGCGACAGCAACGTGGCGCGGACTACGCCGCTCCCGGGCGCCCCCTGCCCCAGCTCCGAGGAGGAGG
 ACGGAGAGGCAGTGGCACAC

ACGCGTACGCGGCCGCTCGAGCAGAAACTCATCTCAGAAGAGGATCTGGCAGCAAATGATATCTGGATT
 ACAAGGATGACGACGATAAGGTTTAA



[View online »](#)

Protein Sequence: >RC207996 protein sequence
Red=Cloning site Green=Tags(s)

MGNQVEKLTHTLSYKEVPTADPTGVDRDDGPRIGVSYIFSNDDEDVEPQPPQGPDPGGGLPDGGDGP PPPQ
 PQPYDPRLHEVECSV FYRDECIYQKSFAPGSAALSTYTPENLLNKCKPGDLVEFVSQAQYPHWAVYVGNF
 QVVHLHRLEVIN SFLT D ASQRRGRVNDLYRYKPLSSSAVVRNALAHVGAKERELSWRNSE SFAAWCRY
 GKREFKIGGELRIGKQPYRLQIQLSAQRSH TLEFQSLEDLIMEKRRNDQIGRAAVLQELATHLHPAEPEE
 GDSNVARTTPPPGRPPAPSSEEDGEAVAH

TRTRPLEQKLISEEDLAANDILDYKDDDDKV

Chromatograms: https://cdn.origene.com/chromatograms/mk6352_g02.zip

Restriction Sites: SgfI-MluI

Cloning Scheme:



ACCN: NM_174911

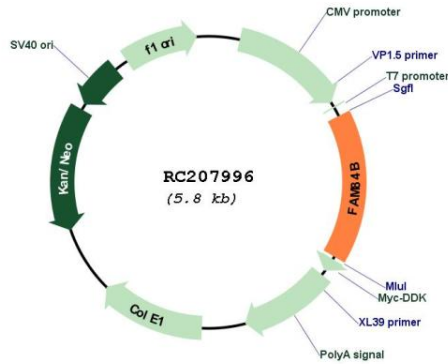
ORF Size: 930 bp

OTI Disclaimer: Due to the inherent nature of this plasmid, standard methods to replicate additional amounts of DNA in E. coli are highly likely to result in mutations and/or rearrangements. Therefore, OriGene does not guarantee the capability to replicate this plasmid DNA. Additional amounts of DNA can be purchased from OriGene with batch-specific, full-sequence verification at a reduced cost. Please contact our customer care team at custsupport@origene.com or by calling 301.340.3188 option 3 for pricing and delivery.

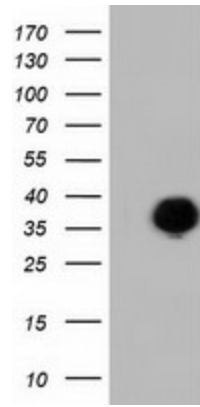
The molecular sequence of this clone aligns with the gene accession number as a point of reference only. However, individual transcript sequences of the same gene can differ through naturally occurring variations (e.g. polymorphisms), each with its own valid existence. This clone is substantially in agreement with the reference, but a complete review of all prevailing variants is recommended prior to use. [More info](#)

OTI Annotation:	This clone was engineered to express the complete ORF with an expression tag. Expression varies depending on the nature of the gene.
Components:	The ORF clone is ion-exchange column purified and shipped in a 2D barcoded Matrix tube containing 10ug of transfection-ready, dried plasmid DNA (reconstitute with 100 ul of water).
Reconstitution Method:	<ol style="list-style-type: none"> 1. Centrifuge at 5,000xg for 5min. 2. Carefully open the tube and add 100ul of sterile water to dissolve the DNA. 3. Close the tube and incubate for 10 minutes at room temperature. 4. Briefly vortex the tube and then do a quick spin (less than 5000xg) to concentrate the liquid at the bottom. 5. Store the suspended plasmid at -20°C. The DNA is stable for at least one year from date of shipping when stored at -20°C.
RefSeq:	<u>NM_174911.3, NP_77571.1</u>
RefSeq Size:	5503 bp
RefSeq ORF:	933 bp
Locus ID:	157638
UniProt ID:	<u>Q96KN1</u>
Cytogenetics:	8q24.21
MW:	34.5 kDa

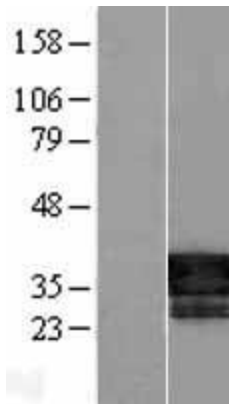
Product images:



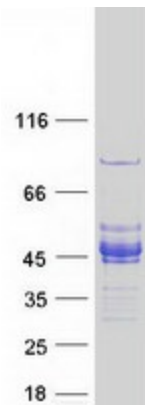
Circular map for RC207996



HEK293T cells were transfected with the pCMV6-ENTRY control (Cat# [PS100001], Left lane) or pCMV6-ENTRY FAM84B (Cat# RC207996, Right lane) cDNA for 48 hrs and lysed. Equivalent amounts of cell lysates (5 ug per lane) were separated by SDS-PAGE and immunoblotted with anti-FAM84B (Cat# [TA501916]). Positive lysates [LY406394] (100ug) and [LC406394] (20ug) can be purchased separately from OriGene.



Western blot validation of overexpression lysate (Cat# [LY406394]) using anti-DDK antibody (Cat# [TA50011-100]). Left: Cell lysates from untransfected HEK293T cells; Right: Cell lysates from HEK293T cells transfected with RC207996 using transfection reagent MegaTran 2.0 (Cat# [TT210002]).



Coomassie blue staining of purified LRATD2 protein (Cat# [TP307996]). The protein was produced from HEK293T cells transfected with LRATD2 cDNA clone (Cat# RC207996) using MegaTran 2.0 (Cat# [TT210002]).