

Product datasheet for RC207991L1

NALP4 (NLRP4) (NM_134444) Human Tagged Lenti ORF Clone

Product data:

Product Type:	Expression Plasmids
Product Name:	NALP4 (NLRP4) (NM_134444) Human Tagged Lenti ORF Clone
Tag:	Myc-DDK
Symbol:	NALP4
Synonyms:	CLR19.5; CT58; NALP4; PAN2; PYPAF4; RNH2
Mammalian Cell Selection:	None
Vector:	pLenti-C-Myc-DDK (PS100064)
E. coli Selection:	Chloramphenicol (34 ug/mL)
ORF Nucleotide Sequence:	The ORF insert of this clone is exactly the same as(RC207991).
Restriction Sites:	SgfI-MluI
Cloning Scheme:	

Cloning sites used for ORF Shuttling:



* The last codon before the Stop codon of the ORF.

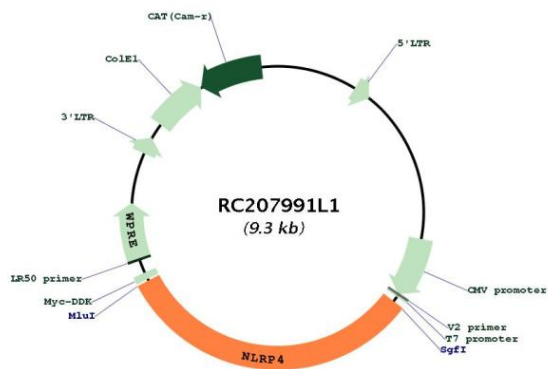
ACCN:	NM_134444
ORF Size:	2982 bp



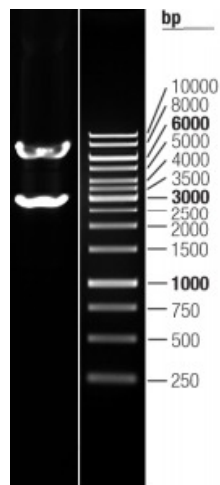
[View online »](#)

OTI Disclaimer:	The molecular sequence of this clone aligns with the gene accession number as a point of reference only. However, individual transcript sequences of the same gene can differ through naturally occurring variations (e.g. polymorphisms), each with its own valid existence. This clone is substantially in agreement with the reference, but a complete review of all prevailing variants is recommended prior to use. More info
OTI Annotation:	This clone was engineered to express the complete ORF with an expression tag. Expression varies depending on the nature of the gene.
Components:	The ORF clone is ion-exchange column purified and shipped in a 2D barcoded Matrix tube containing 10ug of transfection-ready, dried plasmid DNA (reconstitute with 100 ul of water).
Reconstitution Method:	<ol style="list-style-type: none">1. Centrifuge at 5,000xg for 5min.2. Carefully open the tube and add 100ul of sterile water to dissolve the DNA.3. Close the tube and incubate for 10 minutes at room temperature.4. Briefly vortex the tube and then do a quick spin (less than 5000xg) to concentrate the liquid at the bottom.5. Store the suspended plasmid at -20°C. The DNA is stable for at least one year from date of shipping when stored at -20°C.
RefSeq:	NM_134444.3
RefSeq Size:	3339 bp
RefSeq ORF:	2985 bp
Locus ID:	147945
UniProt ID:	Q96MN2
Cytogenetics:	19q13.43
MW:	113.2 kDa
Gene Summary:	The protein encoded by this gene is a member of the nucleotide-binding and leucine-rich repeat receptor (NLR) family, and is predicted to contain an N-terminal pyrin effector domain (PYD), a centrally-located nucleotide-binding and oligomerization domain (NACHT) and C-terminal leucine-rich repeats (LRR). This gene product has a demonstrated role as a negative regulator of autophagy and type I interferon signaling pathways as a result of protein interactions with its NACHT domain. The PYD domain has also been shown to be important in the inhibition of NF-kB (nuclear factor kappa-light-chain-enhancer of activated B cells). [provided by RefSeq, Dec 2016]

Product images:



Circular map for RC207991L1



Double digestion of RC207991L1 using SgfI and MluI