

Product datasheet for **RC207989**

IL33 (NM_033439) Human Tagged ORF Clone

Product data:

Product Type: Expression Plasmids
Product Name: IL33 (NM_033439) Human Tagged ORF Clone
Tag: Myc-DDK
Symbol: IL33
Synonyms: C9orf26; DVS27; IL1F11; NF-HEV; NFEHEV
Mammalian Cell Selection: Neomycin
Vector: pCMV6-Entry (PS100001)
E. coli Selection: Kanamycin (25 ug/mL)
ORF Nucleotide Sequence: >RC207989 ORF sequence
Red=Cloning site Blue=ORF Green=Tags(s)

TTTTGTAATACGACTCACTATAGGGCGGCCGGAATTCGTCGACTGGATCCGGTACCGAGGAGATCTGCC
GCC**CGATCGCC**

ATGAAGCCTAAAATGAAGTATTCAACCAACAAAATTTCCACAGCAAAGTGAAGAACACAGCAAGCAAAG
CCTTGTGTTTCAAGCTGGGAAAATCCCAACAGAAGGCCAAAGAAGTTGCCCATGTACTTTATGAAGCT
CCGCTCTGGCCTTATGATAAAAAAGGAGGCCTGTTACTTTAGGAGAGAAACCACAAAAGGCCTTCACTG
AAAACAGGTAGAAAGCACAAAAGACATCTGGTACTCGCTGCCTGTCAACAGCAGTCTACTGTGGAGTGCT
TTGCCTTTGGTATATCAGGGGTCCAGAAATATACTAGAGCACTTCATGATTCAAGTATCACAGGAATTTT
ACCTATTACAGAGTATCTTGCTTCTAAGCACATACAATGATCAATCCATTACTTTTGCTTTGGAGGAT
GAAAGTTATGAGATATATGTTGAAGACTTGAAAAAAGATGAAAAGAAAGATAAGGTGTTACTGAGTTACT
ATGAGTCTCAACACCCCTCAAATGAATCAGGTGACGGTGTGATGGTAAGATGTTAATGGTAACCCCTGAG
TCCTACAAAAGACTTCTGGTTGCATGCCAACACAAGGAACACTCTGTGGAGCTCCATAAGTGTGAAAAA
CCACTGCCAGACCAGGCCTTCTTTGCTTCATAATATGCACTCCAACCTGTGTTTCATTTGAATGCAAGA
CTGATCCTGGAGTGTATAGGTGTAAGGATAATCATCTTGCTCTGATTAAAGTAGACTCTTCTGAGAA
TTTGTGTAAGTAAAATATCTTGTGTTAAGCTCTCTGAAAT

ACGCGTACGCGGCCGCTCGAGCAGAAACTCATCTCAGAAGAGGATCTGGCAGCAAATGATATCCTGGATT
ACAAGGATGACGACGATAAGGTTTAA



[View online »](#)

Protein Sequence: >RC207989 protein sequence
Red=Cloning site Green=Tags(s)

MKPKMKYSTNKISTAKWKNTASKALCFKLGKSQQKAKEVCPMYFMKLRSGLMIKKEACYFRRETTKRPSL
 KTGRKHKRHLVLAACQQQSTVECFAGFISGVQKYTRALHDSSITGISPIITEYLASLSTYNDQSITFALED
 ESYEIIYVEDLKKDEKKDKVLLSYYESQHPNSNESGDGVDGKMLMVTLSPTKDFWLHANNKEHSVELHKCEK
 PLPDQAFFVLHNMHSNCVSECKTDPGVFIGVKDNHLALIKVDSSENLCTENILFKLSET

TRTRPLEQKLISEEDLAANDILDYKDDDDKV

Chromatograms: https://cdn.origene.com/chromatograms/mk6287_d10.zip

Restriction Sites: SgfI-MluI

Cloning Scheme:

Cloning sites used for ORF Shuttling:



* The last codon before the Stop codon of the ORF

ACCN: NM_033439

ORF Size: 810 bp

OTI Disclaimer: Due to the inherent nature of this plasmid, standard methods to replicate additional amounts of DNA in E. coli are highly likely to result in mutations and/or rearrangements. Therefore, OriGene does not guarantee the capability to replicate this plasmid DNA. Additional amounts of DNA can be purchased from OriGene with batch-specific, full-sequence verification at a reduced cost. Please contact our customer care team at custsupport@origene.com or by calling 301.340.3188 option 3 for pricing and delivery.

The molecular sequence of this clone aligns with the gene accession number as a point of reference only. However, individual transcript sequences of the same gene can differ through naturally occurring variations (e.g. polymorphisms), each with its own valid existence. This clone is substantially in agreement with the reference, but a complete review of all prevailing variants is recommended prior to use. [More info](#)

OTI Annotation: This clone was engineered to express the complete ORF with an expression tag. Expression varies depending on the nature of the gene.

Components: The ORF clone is ion-exchange column purified and shipped in a 2D barcoded Matrix tube containing 10ug of transfection-ready, dried plasmid DNA (reconstitute with 100 ul of water).

Reconstitution Method:

1. Centrifuge at 5,000xg for 5min.
2. Carefully open the tube and add 100ul of sterile water to dissolve the DNA.
3. Close the tube and incubate for 10 minutes at room temperature.
4. Briefly vortex the tube and then do a quick spin (less than 5000xg) to concentrate the liquid at the bottom.
5. Store the suspended plasmid at -20°C. The DNA is stable for at least one year from date of shipping when stored at -20°C.

RefSeq: [NM_033439.4](#)

RefSeq Size: 2718 bp

RefSeq ORF: 813 bp

Locus ID: 90865

UniProt ID: [O95760](#)

Cytogenetics: 9p24.1

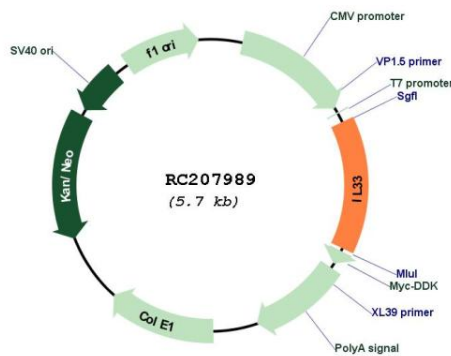
Protein Families: Secreted Protein

Protein Pathways: Cytosolic DNA-sensing pathway

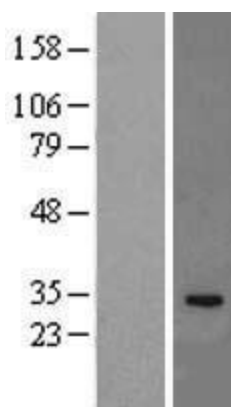
MW: 30.8 kDa

Gene Summary: The protein encoded by this gene is a cytokine that binds to the IL1RL1/ST2 receptor. The encoded protein is involved in the maturation of Th2 cells and the activation of mast cells, basophils, eosinophils and natural killer cells. Several transcript variants encoding different isoforms have been found for this gene. [provided by RefSeq, Sep 2015]

Product images:



Circular map for RC207989



Western blot validation of overexpression lysate (Cat# [LY409498]) using anti-DDK antibody (Cat# [TA50011-100]). Left: Cell lysates from untransfected HEK293T cells; Right: Cell lysates from HEK293T cells transfected with RC207989 using transfection reagent MegaTran 2.0 (Cat# [TT210002]).