

## Product datasheet for **RC207984**

### COMMD7 (NM\_053041) Human Tagged ORF Clone

#### Product data:

**Product Type:** Expression Plasmids  
**Product Name:** COMMD7 (NM\_053041) Human Tagged ORF Clone  
**Tag:** Myc-DDK  
**Symbol:** COMMD7  
**Synonyms:** C20orf92; dj1085F17.3  
**Mammalian Cell Selection:** Neomycin  
**Vector:** pCMV6-Entry (PS100001)  
**E. coli Selection:** Kanamycin (25 ug/mL)  
**ORF Nucleotide Sequence:** >RC207984 ORF sequence  
 Red=Cloning site Blue=ORF Green=Tags(s)

TTTTGTAATACGACTCACTATAGGGCGCCGGGAATTCGTCGACTGGATCCGGTACCGAGGAGATCTGCC  
 GCC**CGATCGCC**

ATGGGCGCCTGCACTGCACTGAGGACCCGGTGCCGGAGGCCGTGGGCGGCGACATGCAGCAGCTGAACC  
 AGCTGGGCGCGCAGCAGTTCTCAGCCCTGACAGAGGTGCTTTTCCACTTCCTAACTGAGCAAAAAGAGGT  
 GAAAGATTTCTGGCTCAGCTCTCTGAATTTGCCACCACCAATCAGATCAGTCTTGGCTCCCTCAGAAGC  
 ATCGTGAAAAGCCTCCTTCTGGTCCAATGGTCTTTGAAGAAGAGTCTCACAGCCAAGCAGGTCCAGG  
 CGGATTTCAACTCTGGTCTTAGTGAGGAGAAAGCCACTTACTTTTCTGAAAAGTGAAGCAGAATAC  
 TCCACCCTTGCTCGATGGGCCATAGGTCAGACTCTGATGATTAACCAGCTCATAGATATGGAGTGGAAA  
 TTTGGAGTGACATCTGGGAGCAGCGAATTGGAGAAAGTGGAAAGTATATTTTTACAATAAAGTTGGTGG  
 TTAAGAAAGGAAATCAAACCAAAAATGTGTATATAGAATTAACCTTGCCCTCAGTTCTACAGCTTCTGCA  
 CGAGATGGAGCGAGTCAGAACCAGCATGGAGTGTCTCTGC

**ACGCGT**ACGCGGCCGCTCGAGCAGAACTCATCTCAGAAGAGGATCTGGCAGCAATGATATCCTGGATT  
 ACAAGGATGACGACGATAAGGTTTAA

**Protein Sequence:** >RC207984 protein sequence  
 Red=Cloning site Green=Tags(s)

MGRLHCTEDPVPEAVGGDMQQLNQLGAQQFSALTEVLFHFLTEQKEVERFLAQLSEFATTNQISLGLSLRS  
 IVKSLLLVPNGALKKSLTAKVQADFITLGLSEEKATYFSEKWKQNTPTLARWAIGQTLMINQLIDMEWK  
 FGVTSGSSELEKVGSIFLQLKLVVKKGNQTKNVYIELTLPQFYSFLHEMERVRTSMCF

**TRTRPLEQKLI**SEEDLAANDILDYKDDDDKV

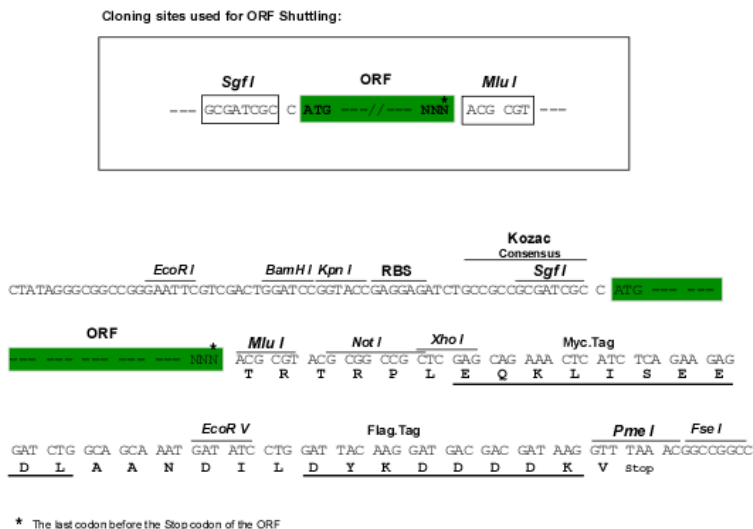


[View online »](#)

Chromatograms: [https://cdn.origene.com/chromatograms/mk6720\\_g12.zip](https://cdn.origene.com/chromatograms/mk6720_g12.zip)

Restriction Sites: SgfI-MluI

Cloning Scheme:



ACCN: NM\_053041

ORF Size: 600 bp

OTI Disclaimer: The molecular sequence of this clone aligns with the gene accession number as a point of reference only. However, individual transcript sequences of the same gene can differ through naturally occurring variations (e.g. polymorphisms), each with its own valid existence. This clone is substantially in agreement with the reference, but a complete review of all prevailing variants is recommended prior to use. [More info](#)

OTI Annotation: This clone was engineered to express the complete ORF with an expression tag. Expression varies depending on the nature of the gene.

Components: The ORF clone is ion-exchange column purified and shipped in a 2D barcoded Matrix tube containing 10ug of transfection-ready, dried plasmid DNA (reconstitute with 100 ul of water).

Reconstitution Method:

1. Centrifuge at 5,000xg for 5min.
2. Carefully open the tube and add 100ul of sterile water to dissolve the DNA.
3. Close the tube and incubate for 10 minutes at room temperature.
4. Briefly vortex the tube and then do a quick spin (less than 5000xg) to concentrate the liquid at the bottom.
5. Store the suspended plasmid at -20°C. The DNA is stable for at least one year from date of shipping when stored at -20°C.

RefSeq: [NM\\_053041.1](#), [NP\\_444269.1](#)

RefSeq Size: 1928 bp

RefSeq ORF: 603 bp

Locus ID: 149951

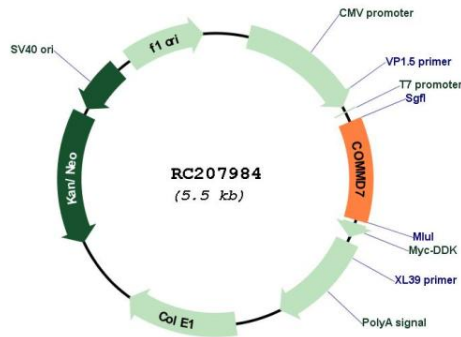
UniProt ID: [Q86VX2](#)

Cytogenetics: 20q11.21

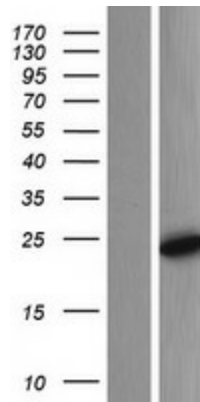
MW: 22.6 kDa

Gene Summary: May modulate activity of cullin-RING E3 ubiquitin ligase (CRL) complexes (PubMed:21778237). Associates with the NF-kappa-B complex and suppresses its transcriptional activity (PubMed:15799966).[UniProtKB/Swiss-Prot Function]

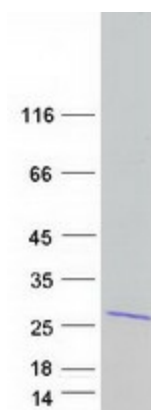
### Product images:



Circular map for RC207984



Western blot validation of overexpression lysate (Cat# [LY409337]) using anti-DDK antibody (Cat# [TA50011-100]). Left: Cell lysates from untransfected HEK293T cells; Right: Cell lysates from HEK293T cells transfected with RC207984 using transfection reagent MegaTran 2.0 (Cat# [TT210002]).



Coomassie blue staining of purified COMMD7 protein (Cat# [TP307984]). The protein was produced from HEK293T cells transfected with COMMD7 cDNA clone (Cat# RC207984) using MegaTran 2.0 (Cat# [TT210002]).