

## Product datasheet for **RC207983**

### **DNAJC16 (NM\_015291) Human Tagged ORF Clone**

#### **Product data:**

Product Type:	Expression Plasmids
Product Name:	DNAJC16 (NM_015291) Human Tagged ORF Clone
Tag:	Myc-DDK
Symbol:	DNAJC16
Mammalian Cell Selection:	Neomycin
Vector:	pCMV6-Entry (PS100001)
E. coli Selection:	Kanamycin (25 ug/mL)



[View online »](#)

ORF Nucleotide  
Sequence:

>RC207983 ORF sequence  
Red=Cloning site Blue=ORF Green=Tags(s)

TTTTGTAATACGACTCACTATAGGGCGGCCGGGAATTCGTCGACTGGATCCGGTACCGAGGAGATCTGCC  
GCC**CGGATCGCC**

ATGGAAGTGAGAAAGTTGAGCATTTCCTGGCAGTTCCTTGATAGTTCTGGTCTGATCCTGCAAATTCCTGT  
CTGCGTTGGATTTTGACCCATACAGAGTCTAGGGGTGAGCCGAACAGCCAGTCAGGCTGATATAAAAA  
GGCTTATAAGAAGCTCGCCCGGGAATGGCATCCTGACAAAAACAAGATCCTGGAGCAGAAGACAAGTTC  
ATTCAAATCAGTAAGGCTTACGAGATTCTTCAAATGAAGAAAAGAGATCAAATTATGATCAATATGGAG  
ACGCTGGAGAGAACCAGGGCTACCAGAAGCAGCAACAGCAGCGAGAGTATCGCTTCGCCATTTCCATGA  
AAATTTTTATTTGATGAATCCTTTTTTCACTTCCCTTTAATTCTGAACGGCGGGACTCAATTGACGAA  
AAGTATTTATTGCACTTTTACATTATGTGAATGAAGTGGTCCAGATAGCTTCAAGAAACCCTACCTCA  
TCAAGATCACCTCGATTGGTGTCTTAGCTGCATTATATCGAGCCTGTGTGAAAGAAGTCATTCAAGA  
ACTGGAAGAATTGGGTGTAGGAATTGGCGTGGTCCATGCTGGGTATGAGAGACGCCTGGCCATCACCTA  
GGGACACAGCAGCCCTCTATCCTAGGAATCATTAAACGGGAAAATCTCCTTCTCCACAATGCAGTTG  
TCCGTGAAAACTGCGACAATTTGTAGAAAAGTCTTCTCCAGGGAACCTGGTGGAGAAAAGTTACAATAA  
AAATTACGTGAGATTCCTCTCTGGCTGGCAGCAAGAGAATAAGCCTCATGTCTTCTGTTTGACCAAACG  
CCCATTGTGCCACTGTTATACAAGTTGACTGCCTTTGCATACAAAGATTATTTATCATTGGATATGAT  
ATGTGGGTTTGAGAGGGACGGAAGAGATGACAAGGCGGTACAACATCAATATCTACGCCCTACCCCTCT  
GGTCTTTAAAGAACATATAAACAGGCCTGCCGATGTTATCCAGGCCCGAGGTATGAAGAAGCAAATCATT  
GACGACTTCATCACCCGAAACAAATATCTATTGGCAGCCAGGCTCACCAGCCAGAAGTTGTTCCATGAAC  
TCTGCCCTGTGAAACGGTCCGATCGACAGAGGAAGTACTGTGTGGTTTTATTGACTGCTGAGACTACCAA  
GTTGAGCAAACCTTTGAGGCTTTCTGTCTTTGCCCTGGCAAACACTCAAGACACAGTGAAGATTTGTG  
CATGTCTACAGCAATCGGCAGCAGGAGTTTGCCGACACCTTACTACCAGACAGTGAAGCGTTTCAAGGGA  
AATCAGCGGTGTCTATTTTAGAAAGGCGCAACACAGCAGGAAGGGTGGTGTATAAAACCCTGGAAGACCC  
TTGGATTGGGAGTGAGAGTGACAAATTTATCCTCTTGGGCTATCTCGACCAGCTGCGTAAAGATCCAGCT  
CTTCTGTCTCTGAAGCAGTGTCTCCTGACCTGACCGATGAACCTGCCCCGTGTTTTCTCCTTCGATGGT  
TCTACTGCTTCTGACTACATCTCAGACTGCTGGGATAGCATTTTTACAACAACCTGGAGGAAATGAT  
GCCCTGTGTCCCTGATCTTCTGCCCCTTTCATCCTCTTCGGCACTGTCATCGTTCAGGCTTTCAGC  
GACTCTAATGATGAGCGAGAGTCAAGCCCTCCAGAAAAAGAGGAAGCCCAAGAGAAGACTGGGAAAACCTG  
AGCCAAGCTTACCAAAGAAAACAGCAGCAAGATTCCTAAAAAAGGCTTTGTGGAGGTAACCTGAACCTCAC  
AGATGTAACATACACCAGTAACCTGGTACGTCTGAGGCCAGGCCACATGAATGTGGTCTCATCCTGTCCG  
AATTCTACCAAGACCAGCCTACTACAGAAATTTGCTTTGGAGGTCTACACATTTACTGGGAGCAGCTGCC  
TACACTTCTCCTTCTGAGTCTAGATAAACACAGAGAATGGCTAGAATACTTACTAGAATTTGCTCAAGA  
TGCAGCTCCAATCCAAACCAATATGATAAGCATTTTATGAGCGGTGACTACACTGGTTATGTAAGTGGT  
CTGAATGGCCACAAGAAATACTTCTGCCTTCAAGCCCCAAAAGACAGTCAAGAGGAGGAAGCCATAG  
GGTCGTGACGTGATGTTGACTCTTCCCTCTACCTGGGTGAATCTCGAGGGAAACCTTCTGTGGCCTTGG  
ATCCAGGCCATCAAAGGAAAGTTGAGCAAGCTCTCTTTATGGATGGAACGCCTGCTGGAGGCTCCTTA  
CAGAGGTTTTATATCCATCATGGCCTGAACAGAC

**ACGCGT**ACGCGGCCGCTCGAGCAGAAACTCATCTCAGAAGAGGATCTGGCAGCAAATGATATCCTGGATT  
ACAAGGATGACGACGATAAGGTTTAA

**Protein Sequence:** >RC207983 protein sequence  
Red=Cloning site Green=Tags(s)

MEVRKLSISWQFLIVLVLILQILSALDFDPYRVLGVSRTASQADIKKAYKKLAREWHPDKNKDPGAEDKF  
IQISKAYEILSNEEKRSNYDQYGDAGENQGYQKQQQREYRFRHFHENFYFDESFHFPPNSERRDSIDE  
KYLHSHYVNEVVPDSFKKPYLIKITSDFWCFSCIHIEPVWKEVIQELEELGVGIGVVHAGYERRLAHHL  
GAHSTPSILGIINGKISFFHNAVRENLRQFVESLLPGNLVEKVTNKNYVRFLSGWQQENKPHVLLFDQT  
PIVPLLYKLTAFAYKDYL SFGYVYVGLRGTEEMTRRYNINIYAP TLLVFKEHINRPADVIQARGMCKQII  
DDFITRNKYLLAARLTSQKLFHELCPVKRSHRQRKYCVLLTAETTKLSKPF EAFLSFALANTQDTRFV  
HVYSNRQQEFADTLLPDSEAFQGKSAVILERRNTAGRVVYKTL EDPWIGSESDKFILLGYLDQLRKDPA  
LLSSEAVLPDLTDELAPVFLRWYFYSADYISDCWDSIFHNNWREMMPLLSLIFSALFILFGTVIVQAFS  
DSNDERESSPPEKEEAQEKTGKTEPSFTKENSSKIPKKGFEVTELT DVTYTSNLVRLRPGHMNVVILS  
NSTKTSLLQKFALEVYFTGSSCLHFSFLSLDKHREWLEYLLEFAQDAAPIPNQYDKHFMERDYTGYYLA  
LNGHKKYFCLFKPQKTVEEEEAIGSCSDVDSSLYLGESRGKPCGLGSRPIK GKLSKLSLWMERLLEGSL  
QRFYIPSWPELD

TRTRPLEQKLISEEDLAANDILDYKDDDDKV

**Chromatograms:** [https://cdn.origene.com/chromatograms/mk6513\\_d05.zip](https://cdn.origene.com/chromatograms/mk6513_d05.zip)

**Restriction Sites:** Sgfl-Mlul

Cloning Scheme:

Cloning sites used for ORF Shuttling:



\* The last codon before the Stop codon of the ORF

ACCN: NM\_015291

ORF Size: 2346 bp

**OTI Disclaimer:** Due to the inherent nature of this plasmid, standard methods to replicate additional amounts of DNA in E. coli are highly likely to result in mutations and/or rearrangements. Therefore, OriGene does not guarantee the capability to replicate this plasmid DNA. Additional amounts of DNA can be purchased from OriGene with batch-specific, full-sequence verification at a reduced cost. Please contact our customer care team at [custsupport@origene.com](mailto:custsupport@origene.com) or by calling 301.340.3188 option 3 for pricing and delivery.

The molecular sequence of this clone aligns with the gene accession number as a point of reference only. However, individual transcript sequences of the same gene can differ through naturally occurring variations (e.g. polymorphisms), each with its own valid existence. This clone is substantially in agreement with the reference, but a complete review of all prevailing variants is recommended prior to use. [More info](#)

**OTI Annotation:** This clone was engineered to express the complete ORF with an expression tag. Expression varies depending on the nature of the gene.

**Components:** The ORF clone is ion-exchange column purified and shipped in a 2D barcoded Matrix tube containing 10ug of transfection-ready, dried plasmid DNA (reconstitute with 100 ul of water).

**Reconstitution Method:**

1. Centrifuge at 5,000xg for 5min.
2. Carefully open the tube and add 100ul of sterile water to dissolve the DNA.
3. Close the tube and incubate for 10 minutes at room temperature.
4. Briefly vortex the tube and then do a quick spin (less than 5000xg) to concentrate the liquid at the bottom.
5. Store the suspended plasmid at -20°C. The DNA is stable for at least one year from date of shipping when stored at -20°C.

**RefSeq:** [NM\\_015291.4](#)

**RefSeq Size:** 6078 bp

**RefSeq ORF:** 2349 bp

**Locus ID:** 23341

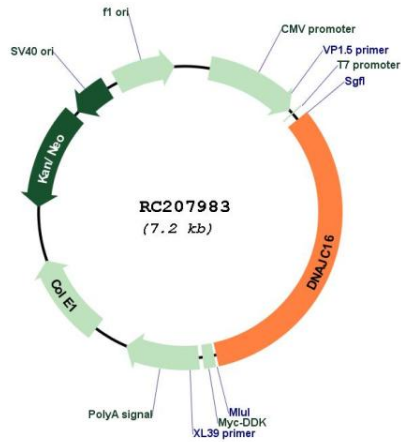
**UniProt ID:** [Q9Y2G8](#)

**Cytogenetics:** 1p36.21

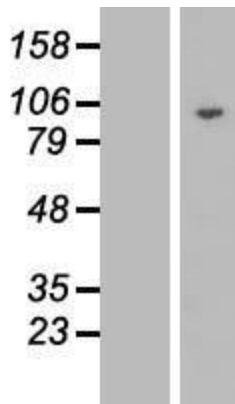
**Protein Families:** Druggable Genome, Transmembrane

**MW:** 90.6 kDa

Product images:



Circular map for RC207983



Western blot validation of overexpression lysate (Cat# [LY414676]) using anti-DDK antibody (Cat# [TA50011-100]). Left: Cell lysates from untransfected HEK293T cells; Right: Cell lysates from HEK293T cells transfected with RC207983 using transfection reagent MegaTran 2.0 (Cat# [TT210002]).