

Product datasheet for **RC207982**

ZDHHC17 (NM_015336) Human Tagged ORF Clone

Product data:

Product Type:	Expression Plasmids
Product Name:	ZDHHC17 (NM_015336) Human Tagged ORF Clone
Tag:	Myc-DDK
Symbol:	ZDHHC17
Synonyms:	DHHC-17; HIP3; HIP14; HSPC294; HYPH
Mammalian Cell Selection:	Neomycin
Vector:	pCMV6-Entry (PS100001)
E. coli Selection:	Kanamycin (25 ug/mL)



[View online »](#)

ORF Nucleotide
Sequence:

>RC207982 ORF sequence
Red=Cloning site Blue=ORF Green=Tags(s)

TTTTGTAATACGACTCACTATAGGGCGGCCGGGAATTCGTCGACTGGATCCGGTACCGAGGAGATCTGCC
GCCGCGATCGCC

ATGCACGGGAGGAGGGATTTAACACCAAGATGGCGGACGGCCGGATGAGTACGATACCGAAGCGGGCT
GTGTGCCCTTCTCCACCCAGAGGAAATCAAACCCCAAAGCCATTATAACCATGGATATGGTGAACCTCT
TGGACGGAAAACATATTGATGATTACAGCACATGGACATAGTCAAGGCTACACAATATGGAATATAT
GAACGCTGTGAGAATTGGTGAAGCAGGTTATGATGTACGGCAACCGGACAAAGAAAATGTTACCTCC
TCCATTGGGCTGCCATCAATAACAGAATAGATTTAGTCAAATACTATATTTGAAAGGTGCTATTGTGGA
TCAACTTGGAGGGGACCTGAATTCAACTCCATTGCACTGGGCCACAAGACAAGGCCATCTATCCATGGTT
GTGCAACTAATGAAATATGGTGCAGATCCTTCATTAATTGATGGAGAAGGATGTAGCTGTATTATCTGG
CTGCTCAGTTCGGACATACCTCAATTGTTGCTTATCTCATAGCAAAGGACAGGATGTAGATATGATGGA
TCAGAATGGAATGACGCCTTTAATGTGGGCAGCATATAGAACACATAGTGTGGATCCAACCTAGATTGCTT
TTAACATTCAATGTTTCAGTTAACCTTGGTGACAAGTATCACAAAACACTGCTCTGCATTGGGCAGTGC
TAGCAGGGAATACCACAGTCATTAGCCTTCTTCTGGAAGCTGGAGCTAATGTTGATGCCAGAATATCAA
GGGCGAATCAGCGCTTGATTTGGCAAAACAGAGAAAAATGTGTGGATGATCAACCACTTACAAGAGGCA
AGGCAAGCAAAAGGATATGACAAATCCGTCCTTCTTAGAAAGCTGAAAGCTGATAAGGAATTTCCGCAGA
AAGTAATGTTAGGAACCTTTCCTAGTTATTTGGCTGGTTGGGTTTATAGCAGACCTAAATATTGATTC
TTGGCTCATTAAAGGGCTAATGTATGGTGGTGTGGGCTACAGTACAGTTTCTTCAAATCCTTTTTC
GATCATTCAATGCATAGTGCATTGCCCTTGGGATATATTTGGCAACCAAAATCTGGATGTATGTGACGT
GGTCTTCTGGTTTTGGAATGATCTCAACTTTTTATTTATCCATCTTCCATTCTTCCAATAGTGTTC
ACTTTTCTACAATTTTGAAAATCTTGAAATCAGATCCAGGGATTATTAAGCAACAGAAGAGCAAAAAG
AAAAAGACAATAGTTGAACTTGCAGAGACAGGAAGTCTGGACCTCAGTATATTCTGCAGTACCTGTTTGA
TACGAAAACCGGTGAGGTCCAAACATTGGTGTGTGCAACCGCTGTATAGCAAAATTTGATCATCATTG
CCCATGGGTGGTAACTGTGTAGGTGCAGGCAACCATAGATATTTTATGGGCTACCTATTCTTCTGCTT
TTTATGATCTGCTGGATGATTTATGGTTGTATATCTTACTGGGACTCCACTGTGAGACCACTTACACCA
AGGATGGATTTTGGACATACATTACTCAGATTGCCACGTGTTACCTGGATGTTTTGGATGTTCTCGAA
CAGTGTTCCTTCCACTTCATGTGGTGGCTGTATTACTCATGTGTCAGATGTACCAGATATCATGTTTAGGT
ATTACTACAAATGAAAGAATGAATGCCAGGAGATACAAGCACTTTAAAGTCACAACAACGCTATTGAAA
GCCATTCAACCATGGATGTGTAAGAAATATTATAGACTTCTTTGAATTCGATGCTGTGGCCTCTTTTCG
TCTGTTATCGTGGACTGGACCAGGAGTATACAATAGAATATGACCAAAATATCAGGATCTGGGTACCAG
CTGGTG

ACGCGTACGCGGCCGCTCGAGCAGAACTCATCTCAGAAGAGGATCTGGCAGCAATGATATCCTGGATT
ACAAGGATGACGACGATAAGGTTTAA

Protein Sequence: >RC207982 protein sequence
Red=Cloning site Green=Tags(s)

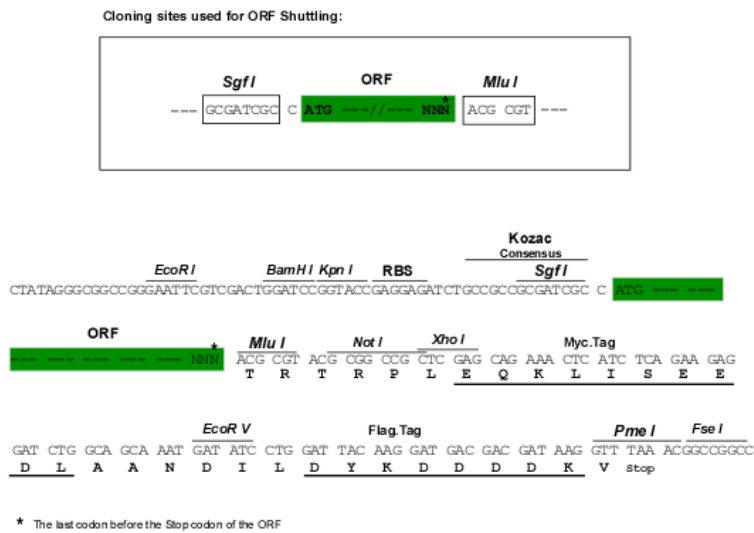
MQREEGFNTKMADGPDEYDTEAGCVPLLHPEEIKPQSHYNHGYGEPLGRKTHIDDYSTWDIVKATQYGIY
 ERCRELVEAGYDVRQPKENVTLHWAAINNRIDLKYYISKGAIVDQLGGDLNSTPLHWATRQGHLSMV
 VQLMKYGADPSLIDGEGCSCIHLAAQFGHTSIVAYLIAKGQDVMDQNGMTPLMWAAYRTHSVDPTRLL
 LTFNVSVNLGDKYHKNTALHWAVLAGNTTVISLLLEAGANVDAQNIKGESALDLAKQRKNVWMINHLQEA
 RQAKGYDNPSFLRKLKADKEFRQKVMLGTPFLVIWL VGF IADLNIDSWLIKGLMYGGVWATVQFLSKSFF
 DHSMHSALPLGIYLATKFWMYVTWFFWFNDLNF LFIHLPFLANSVALFYNGKSWKSDPGI IKATEEQK
 KKTIVEL AETGSLDLSIFCSTCLIRKPVRSKHCGVCNRCIAKFDHHPWVGNVGVGAGNHRHYFMGYLFFLL
 FMICWMIYGCISYWGLHCETTYTKDGFWTYITQIATCSPWFMWFLNSVFHFMWVAVLLMCQMYQISCLG
 ITTNERMARRYKHFKVTTTTSIESPFNHGCVRNII DFFEFRCCGLFRPVI VDWTRQYTI EYDQISGSGYQ
 LV

TRTRPLEQKLISEEDLAANDILDYKDDDDKV

Chromatograms: https://cdn.origene.com/chromatograms/mk6134_h07.zip

Restriction Sites: SgfI-MluI

Cloning Scheme:



ACCN: NM_015336

ORF Size: 1896 bp

OTI Disclaimer: The molecular sequence of this clone aligns with the gene accession number as a point of reference only. However, individual transcript sequences of the same gene can differ through naturally occurring variations (e.g. polymorphisms), each with its own valid existence. This clone is substantially in agreement with the reference, but a complete review of all prevailing variants is recommended prior to use. [More info](#)

OTI Annotation: This clone was engineered to express the complete ORF with an expression tag. Expression varies depending on the nature of the gene.

Components: The ORF clone is ion-exchange column purified and shipped in a 2D barcoded Matrix tube containing 10ug of transfection-ready, dried plasmid DNA (reconstitute with 100 ul of water).

Reconstitution Method:

1. Centrifuge at 5,000xg for 5min.
2. Carefully open the tube and add 100ul of sterile water to dissolve the DNA.
3. Close the tube and incubate for 10 minutes at room temperature.
4. Briefly vortex the tube and then do a quick spin (less than 5000xg) to concentrate the liquid at the bottom.
5. Store the suspended plasmid at -20°C. The DNA is stable for at least one year from date of shipping when stored at -20°C.

RefSeq: [NM_015336.3](#)

RefSeq Size: 4771 bp

RefSeq ORF: 1899 bp

Locus ID: 23390

UniProt ID: [Q8IUH5](#)

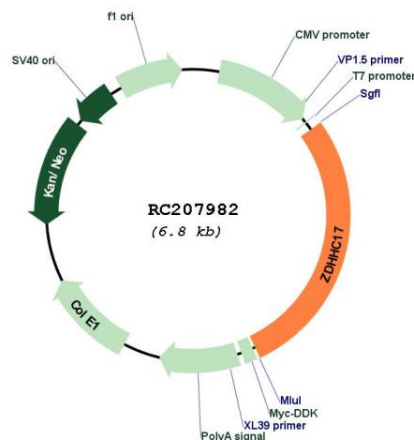
Cytogenetics: 12q21.2

Protein Families: Druggable Genome, Transmembrane

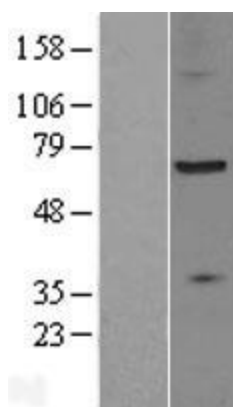
MW: 72.6 kDa

Gene Summary: Palmitoyltransferase specific for a subset of neuronal proteins, including SNAP25, DLG4/PSD95, GAD2, SYT1 and HTT (PubMed:15603740, PubMed:15489887, PubMed:19139280, PubMed:28757145). May be involved in the sorting or targeting of critical proteins involved in the initiating events of endocytosis at the plasma membrane (PubMed:12393793). May play a role in Mg(2+) transport (PubMed:18794299). [UniProtKB/Swiss-Prot Function]

Product images:



Circular map for RC207982



Western blot validation of overexpression lysate (Cat# [LY402425]) using anti-DDK antibody (Cat# [TA50011-100]). Left: Cell lysates from untransfected HEK293T cells; Right: Cell lysates from HEK293T cells transfected with RC207982 using transfection reagent MegaTran 2.0 (Cat# [TT210002]).